

3ds Max Gizmo does not work reliably at 175%+ scaling in Windows 10

Information

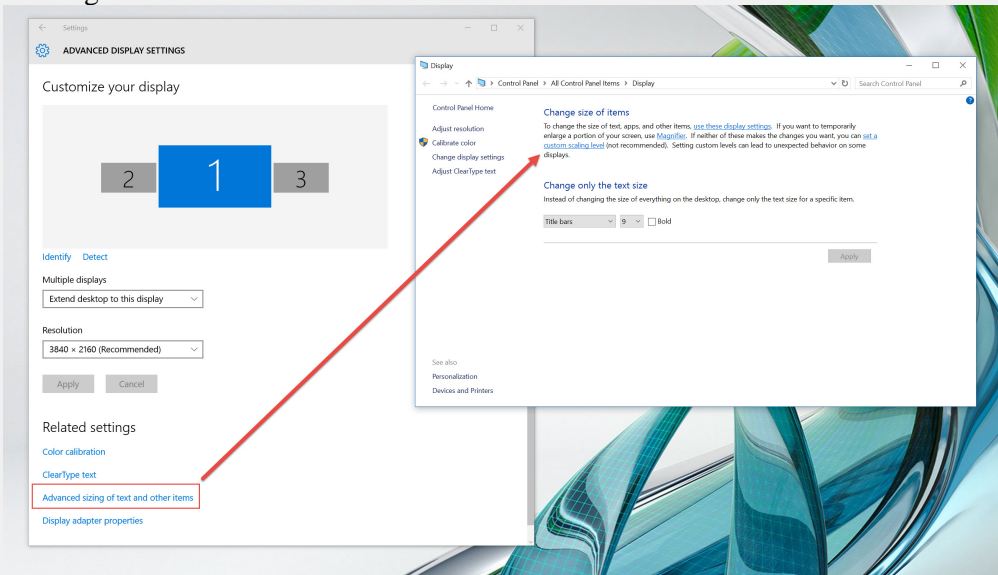
Issue When using 3ds Max 2017 and 2018 at a higher scaling in Windows 10, the transform Gizmo does not work reliably when selecting an axis. This is significantly noticeable using the Rotation Transform tool and attempting to select an axis.

Cause Windows is set to a scaling of 175% or greater.

Solution Windows scaling is supported in 3ds Max 2017 and 2018, due to usage with 4K monitors. This is currently under review by the Max Development team.

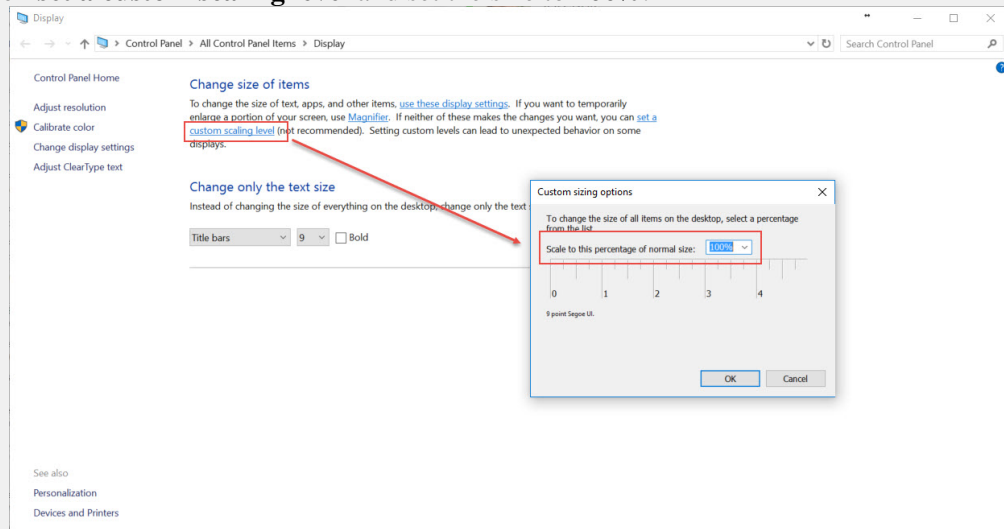
An alternative would be to set the Windows 10 custom scaling level to 100% and change the size of text and apps to 150%. Please see below:

1. Right-click the desktop to open the "Windows Display Settings", and go to **Advanced display settings**.
2. In the "Customize your display" window, go to **Advanced sizing of text and other items** to change the custom scaling of the text.



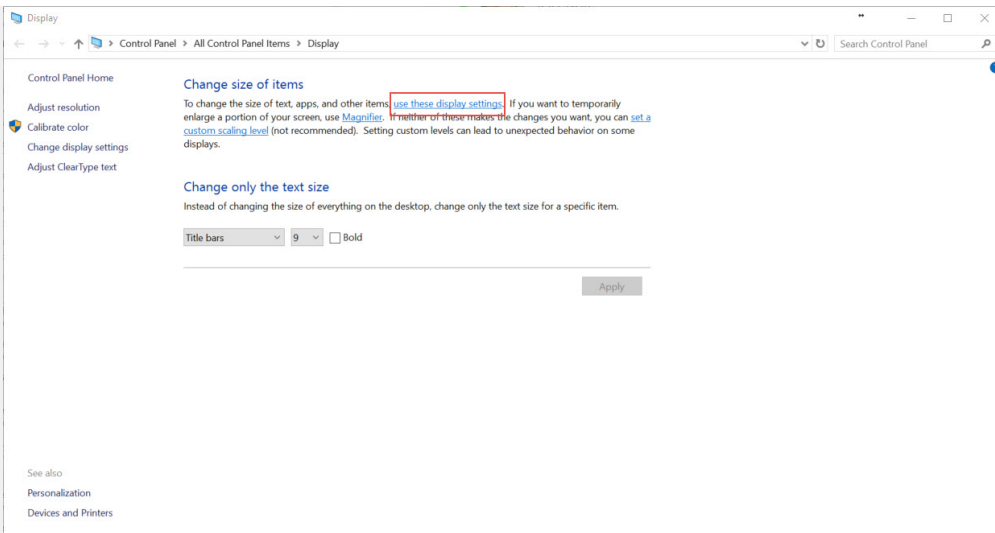
1.

3. Click on **set a custom scaling level** and set the size to 100%.

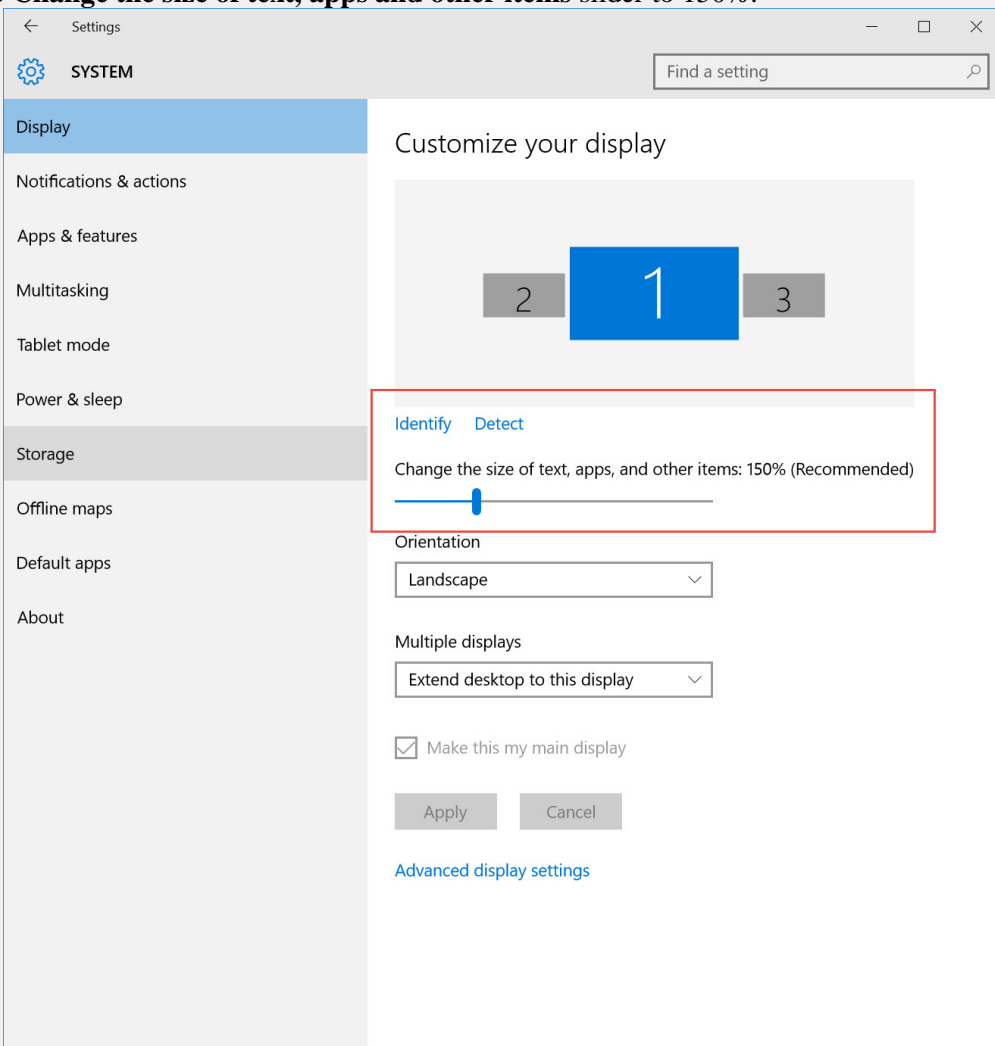


1.

4. Then click **use these display settings** to set the text and apps size.



- 1.
5. Set the **Change the size of text, apps and other items** slider to 150%.



- 1.
2. **Note:** The display customization window can also be accessed via *Windows Start > Settings > System*.

See Also

Attachment

Public URL <http://knowledge.autodesk.com/article/3ds-Max-Gizmo-does-not-work-reliably-at-175-scaling-in-Windows-10>

First

**Published
Date -
Partner KB**

Partner Help Translation Section (for PSO KCS Publisher use only)

**Submit For
Translation**

**Translation In
Progress**

**Translation
Completed**