

Setting up your Inventor Library and Content Center

Hosted by: Mark Lancaster

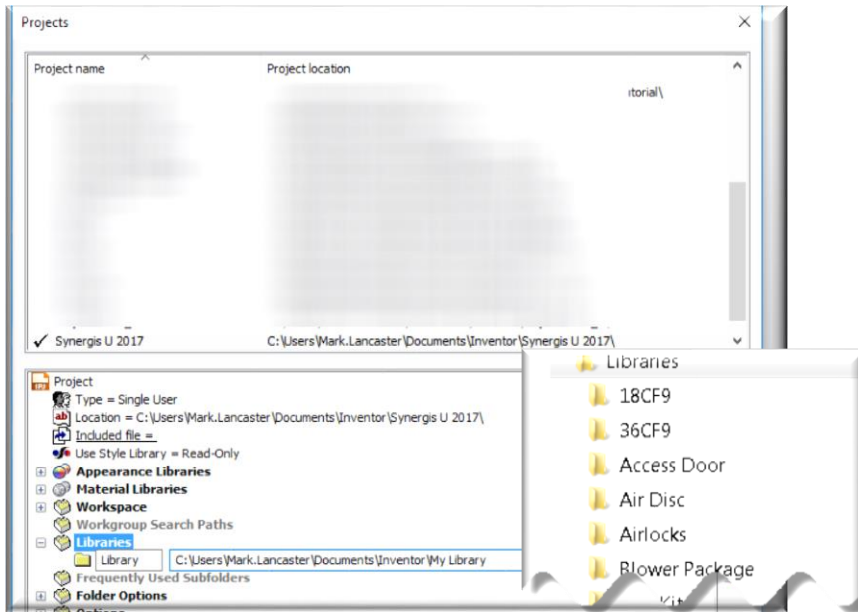


Agenda for today

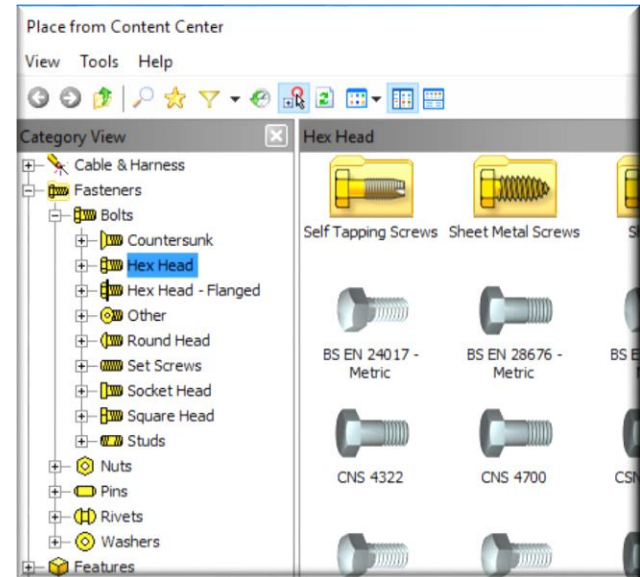
- **Knowing the difference**
- **Configure your library**
- **Configure your content center**
- **Good to know**
- **Publishing content**

Knowing the Difference

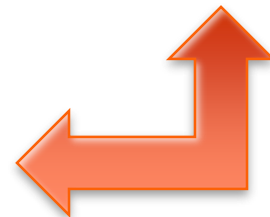
Which one to use?



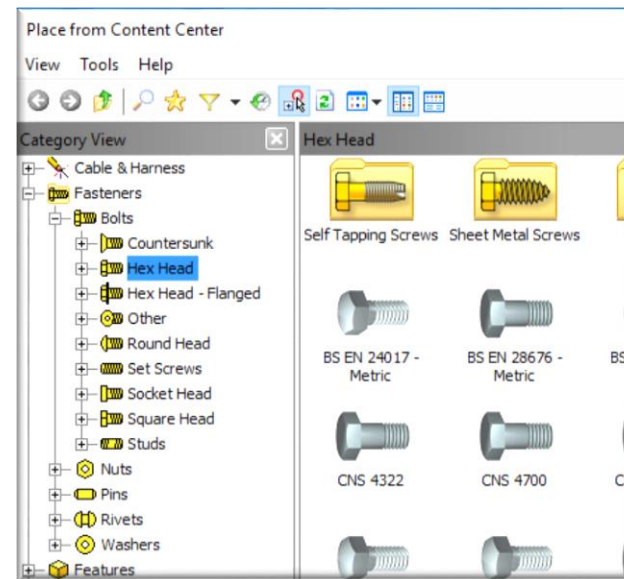
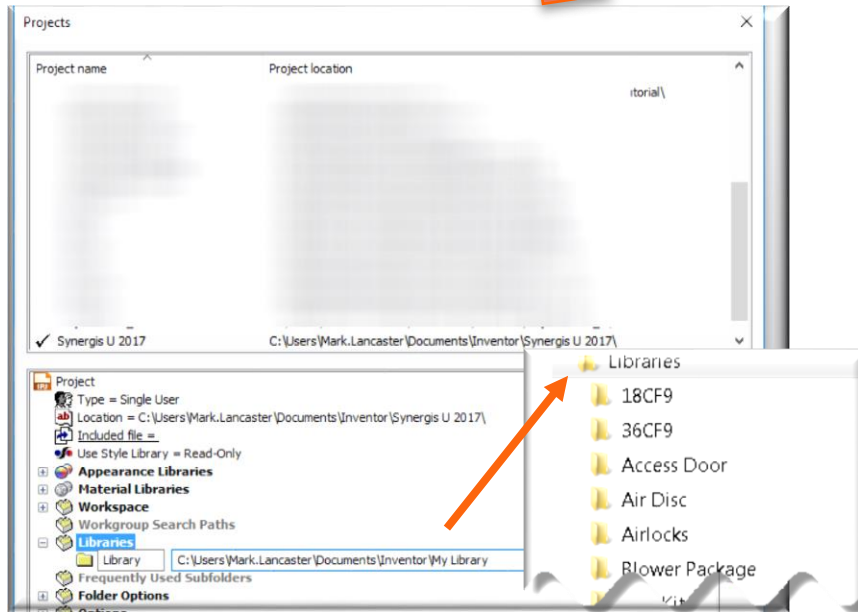
Inventor Library



Inventor Content Center

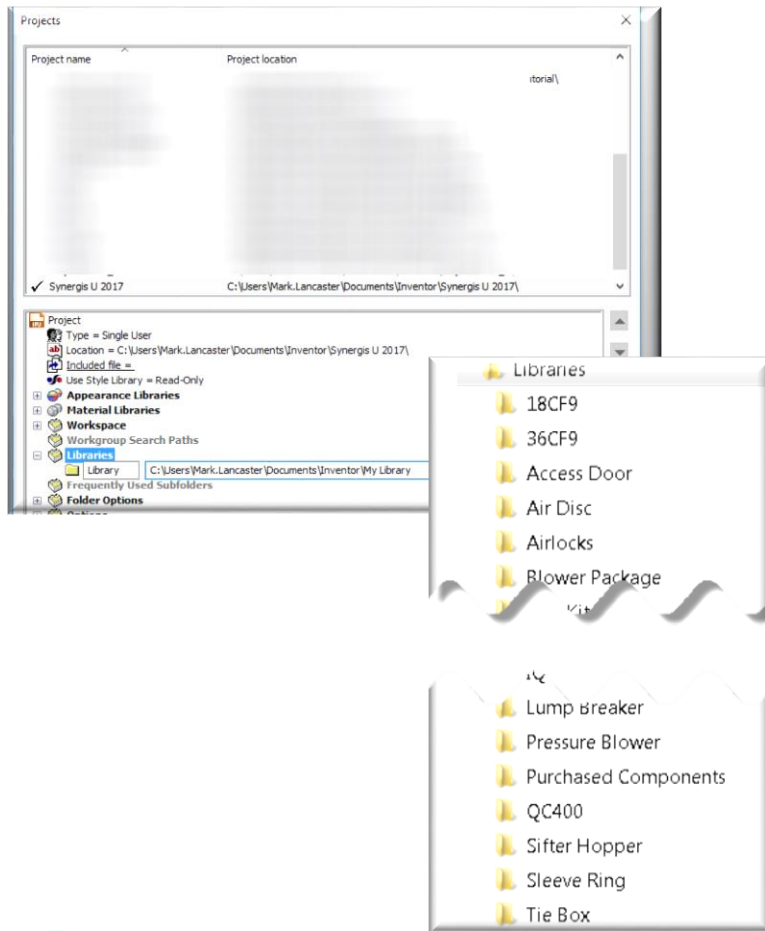


Inventor Library

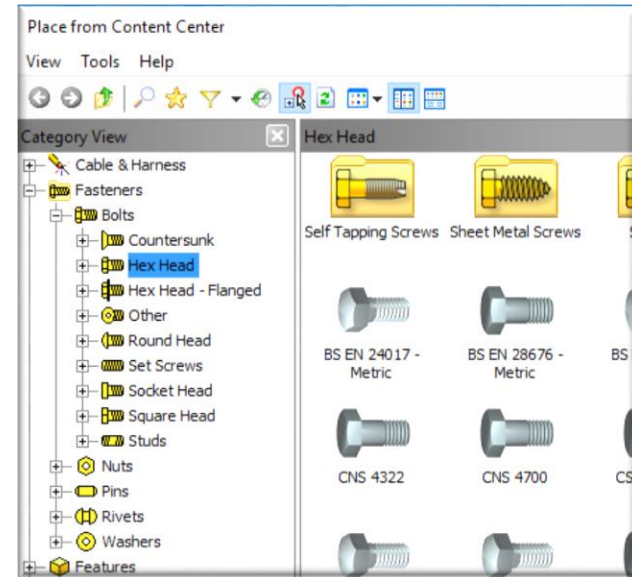


Knowing the Difference

Inventor Library



Inventor Content Center



Inventor Library

- **User Defined/Managed**
- **Based on**
 - Components not (really) changing
 - Company standard components
 - Commonly purchased components
- **Single part/iPart/iAssembly configuration**
- **End User: Read/Write or Read Only**

Pros/The Positives

- **Easy to setup and managed**
- **Based on parts and assemblies**
- **Location to manage iPart Children**
 - 41 min @ <https://www.youtube.com/watch?v=glcn601F6TQ>
- **Updates are**
 - Easy to apply
 - Applied to End User

Pros/The Positives

- Simplified process - working w/iLogic
- Migration to newer version - simply
- Read only
- Used for Tube & Pipe/Cable & Harness
- Easy to share with 3rd parties

Cons/The Negatives

- **Its not really read-only**
 - Requires Windows Security
- **Need 2 project files to manage it**
- **Easily**
 - Modified - impacting standard
 - Deleted
 - Relocated

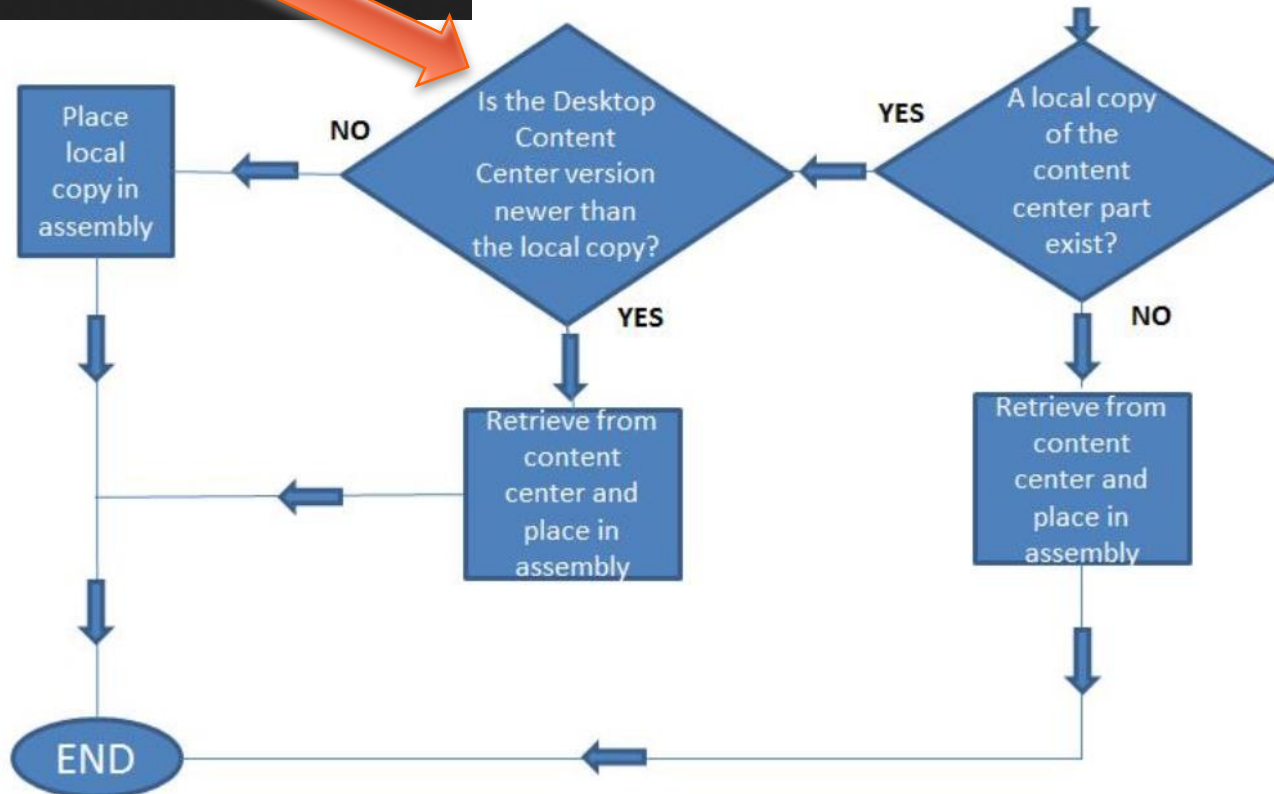
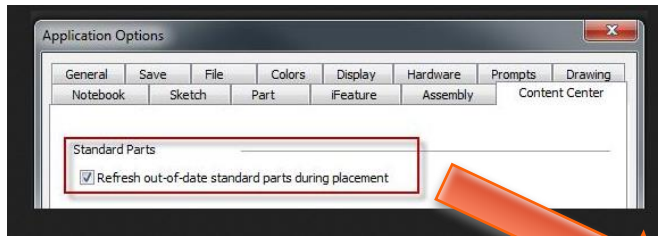
Inventor Content Center

- **Part of the (Inventor) installation**
 - Vault: Separate installation
- **Commonly purchased components**
- **3/4 of million parts provided**
- **18 International Standards**

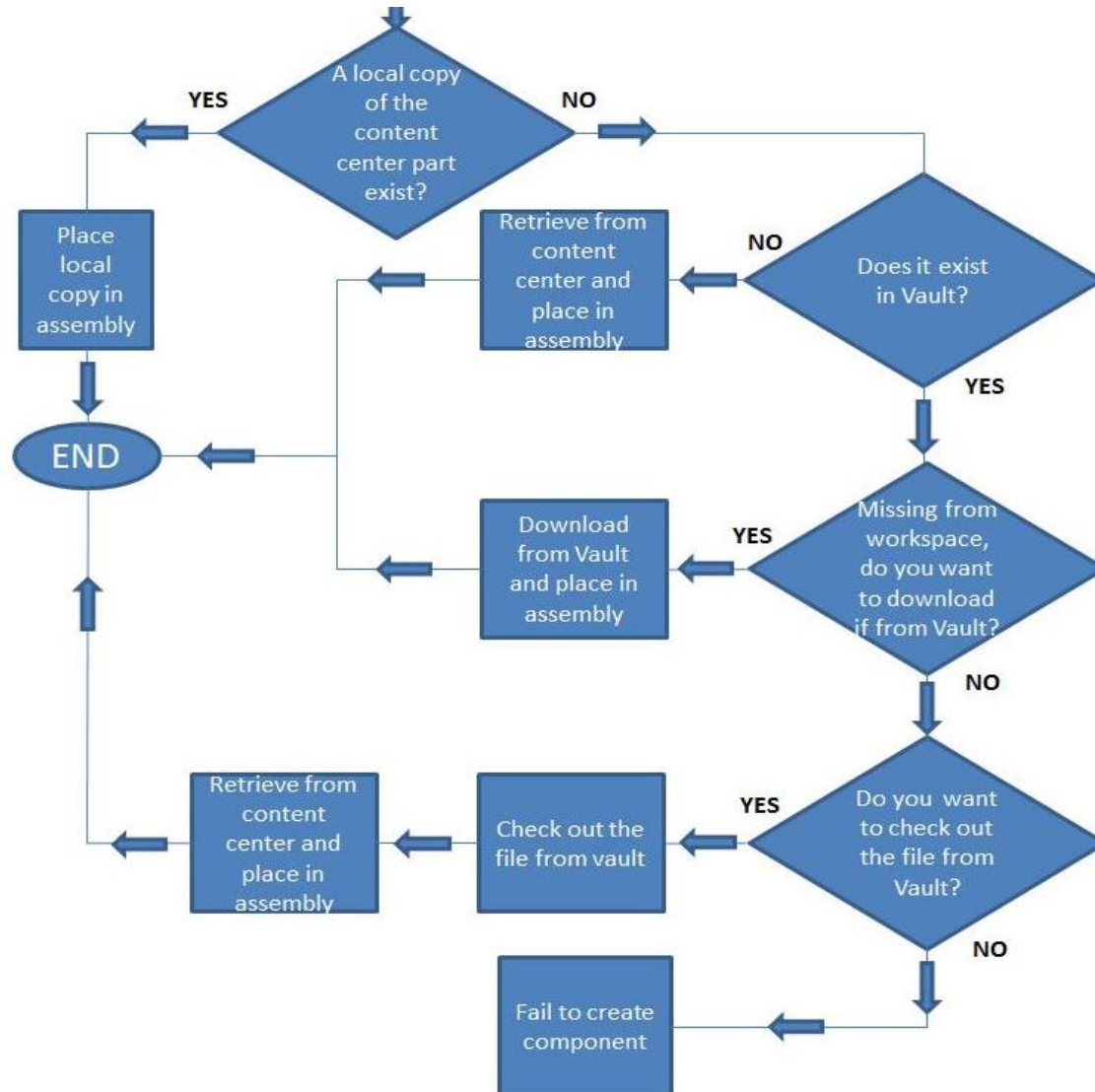
Inventor Content Center

- Contains Hardware, Structural, Piping, Sheet Metal/iFeatures/Shaft Components
- End User: Read-only
- Content Center does not maintain the actual 3D model
- Overall hasn't really changed since introduction

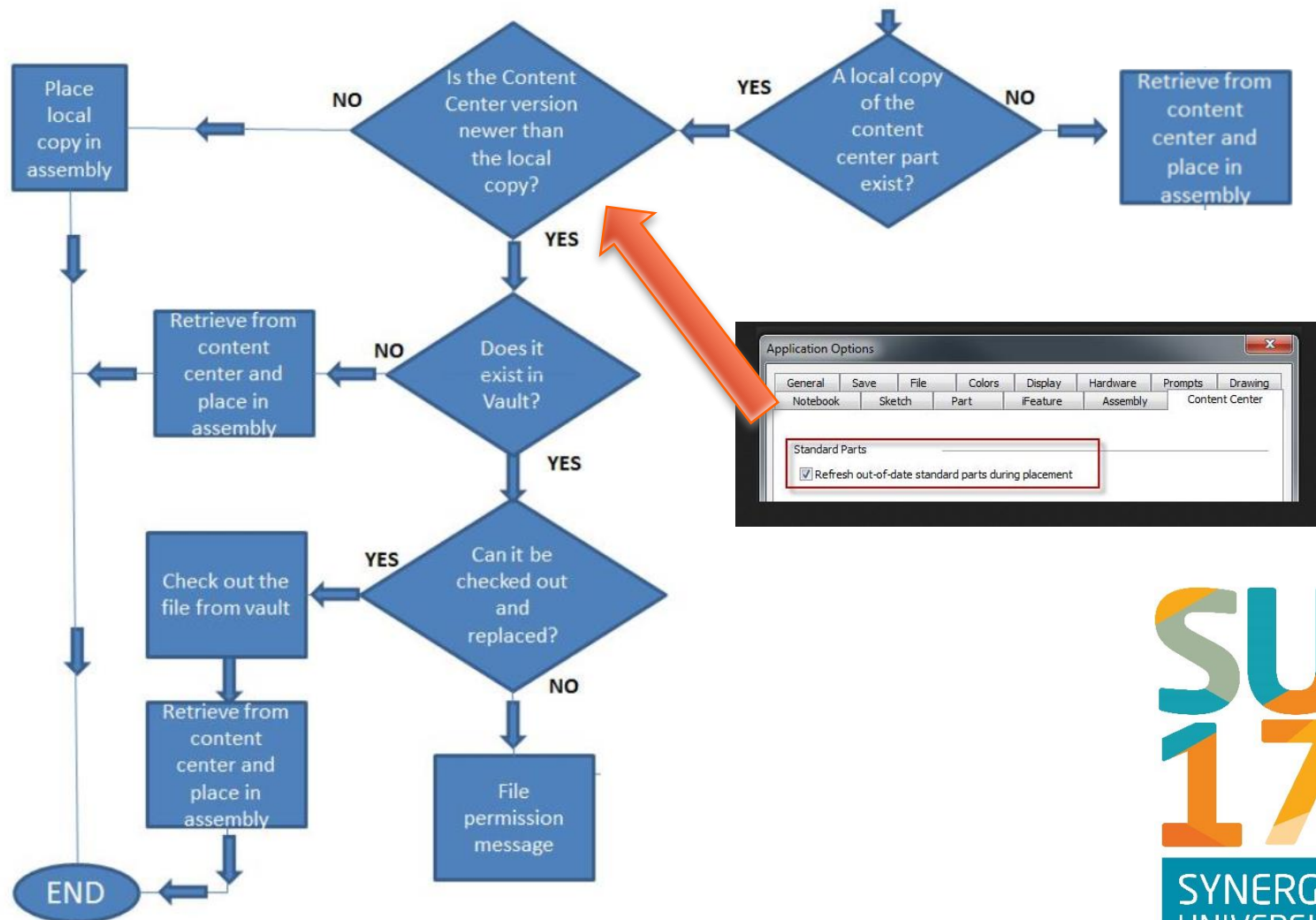
Inventor Desktop Content Center



Inventor Vault Content Center



Inventor Vault Content Center



Pros/The Positives

- **Provided content**
- **Better control - Vault Content Center Only**
- **Needed for**
 - Frame Generator
 - Design Accelerator
 - Tube & Pipe
 - Cable & Harness
- **Place as custom**

Cons/The Negatives

- Publish/Authoring workflows
- Provided Content - Read Only
- Setup process
- Not always easy to share with others

Cons/The Negatives

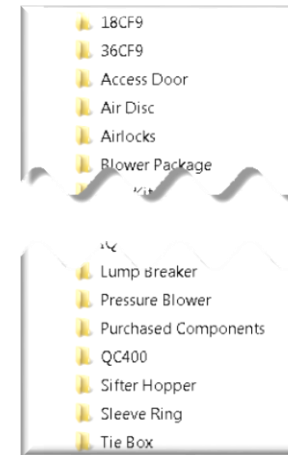
- **No locks → First come, last served**
- **Updates**
 - Certain modifications not allowed
 - Not applied to End Users
- **Set in stone - not easy to relocate/redo**
 - Looks like Windows Explorer but it doesn't function that way

Cons/The Negatives

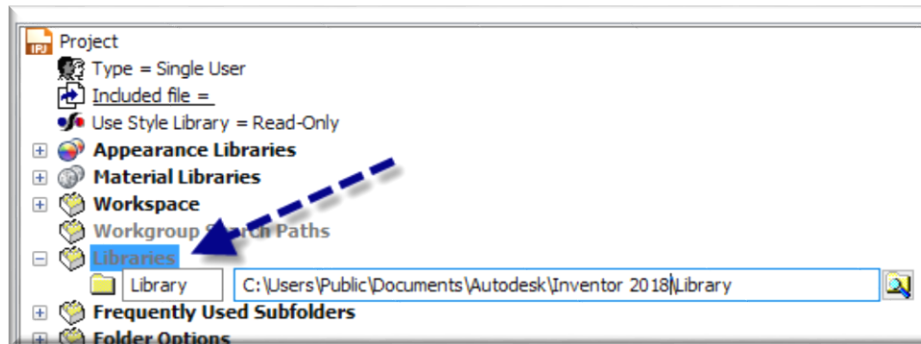
- **Not viable interface for Company standard components**
- **Assembly standards not supported**
- **Migration Process/Next Release**
- **Limited “How To” information**

In 3 Easy Steps

- Create Library Folder Structure



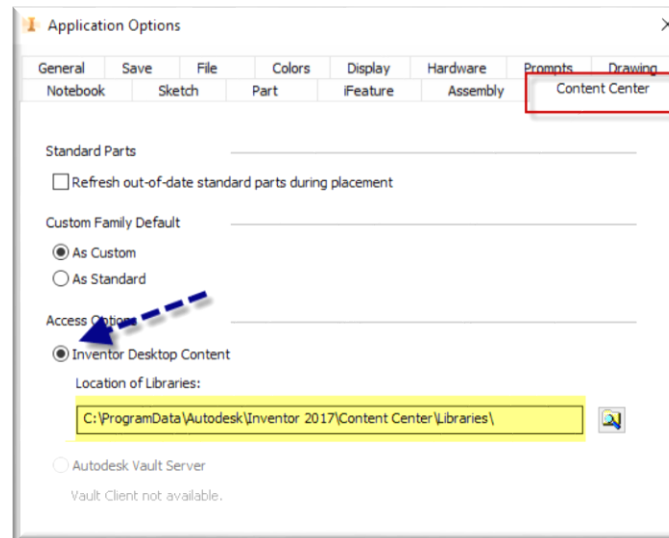
- Define the root folder structure - Inv Proj



- Create/store parts/assemblies in location

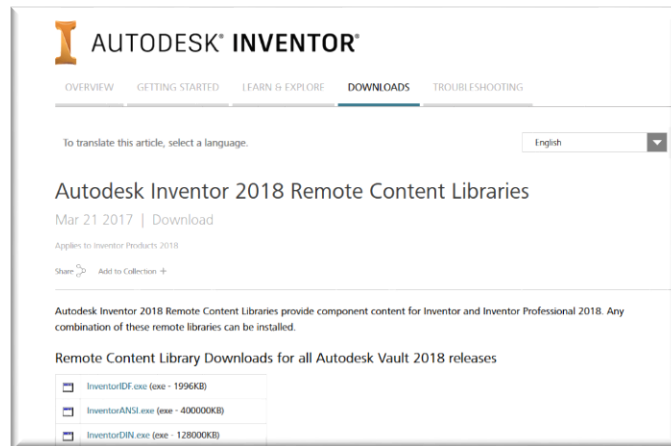
>>DESKTOP VERSION<<

- Installed per Inventor installation
- Sharing - Place in a common location
- Define per Tools/Application Options/Content Center tab

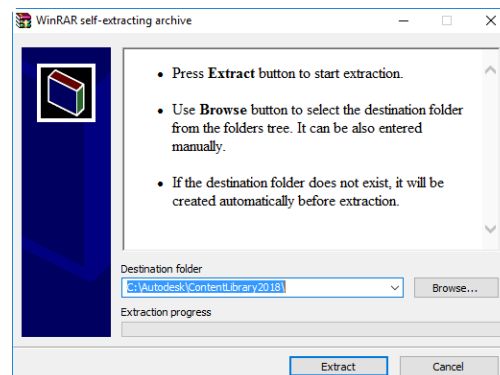


>>VAULT VERSION (SERVER)<<

- Server: Download via web (Remote CC)

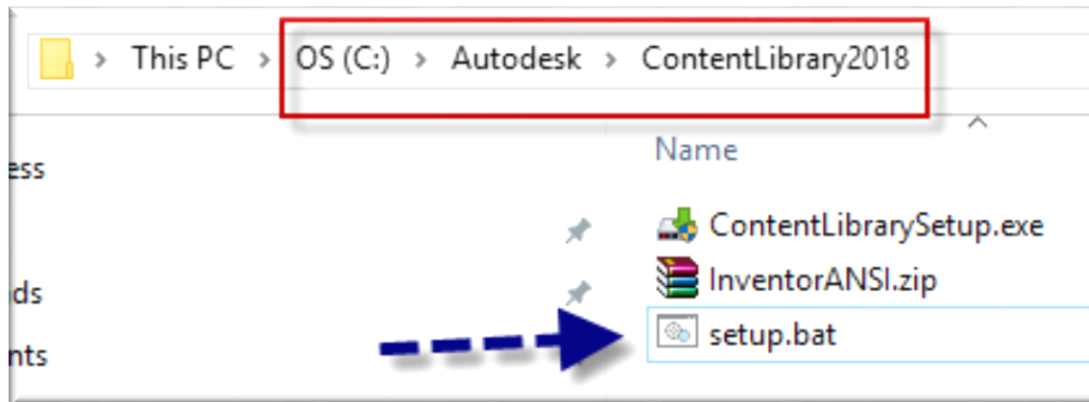


- Extract individual downloaded files



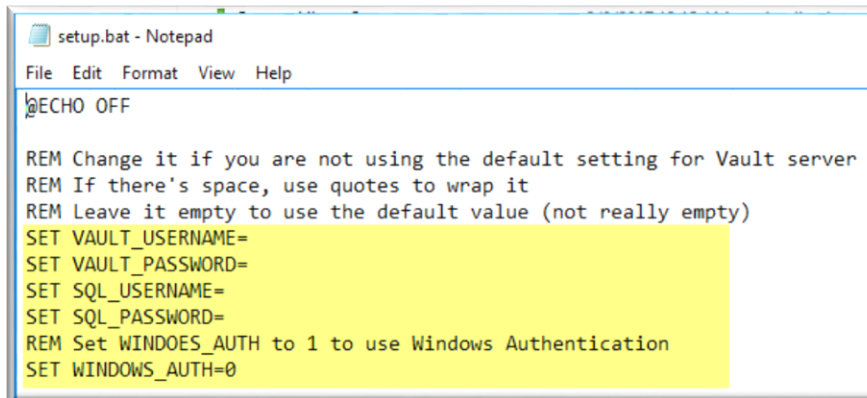
>>VAULT VERSION (SERVER)<<

- Close ADMS Console ← Very Important
- Run setup.bat in the extracted location



>>VAULT VERSION (SERVER)<<

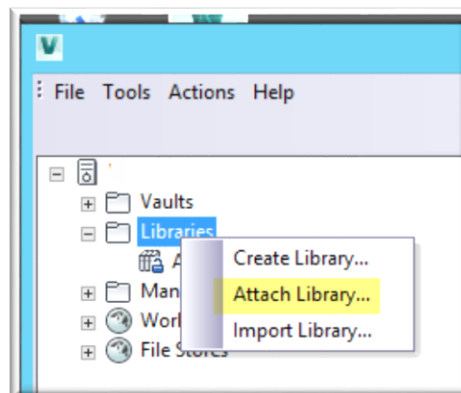
- Depending on credentials/modification reqd



```
setup.bat - Notepad
File Edit Format View Help
@ECHO OFF

REM Change it if you are not using the default setting for Vault server
REM If there's space, use quotes to wrap it
REM Leave it empty to use the default value (not really empty)
SET VAULT_USERNAME=
SET VAULT_PASSWORD=
SET SQL_USERNAME=
SET SQL_PASSWORD=
REM Set WINDOWS_AUTH to 1 to use Windows Authentication
SET WINDOWS_AUTH=0
```

- *Manually attach the libraries via ADMS



Here are some items to consider

- **Have a plan/milestones**
- **It should be a controlled environment**
- **Small group of people (2 to 4) in-charge of managing and defining this environment.**
- **Allowing too many to participate leads to issues**
- **Measure your success and revisit as needed**

Here are some items to consider

- **Libraries and Content Center**
 - Unique naming convention
 - Backup libraries
 - Build structure wisely
- **Content Center**
 - Always copy existing categories before creating your own
 - Family table can be of a single entity

Here are some items to consider

- **Content Center**
 - Do not include parts
 - Often changing
 - Overly complicated
 - Too much information
 - Requiring iLogic
 - Keep separate/not like specifications
 - Certain categories require additional data
 - Grey out info - belongs to read only info

Here are some items to consider

- **Vault Content Center**
 - Assigned Vault Content Center Role
 - ***Vault Admin***
 - Full content center access
 - ***Content Center Admin***
 - User ability to create the read/write library
 - Content Center editing
 - ***Content Center Editor***
 - Only content center editing

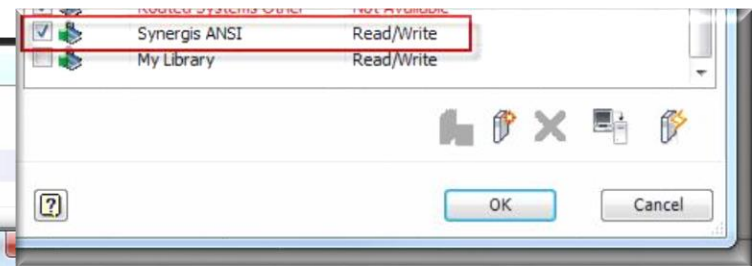
Create Desktop CC Custom Library



Step #1

Access Inventor Project File/Edit State

Configure Content Center

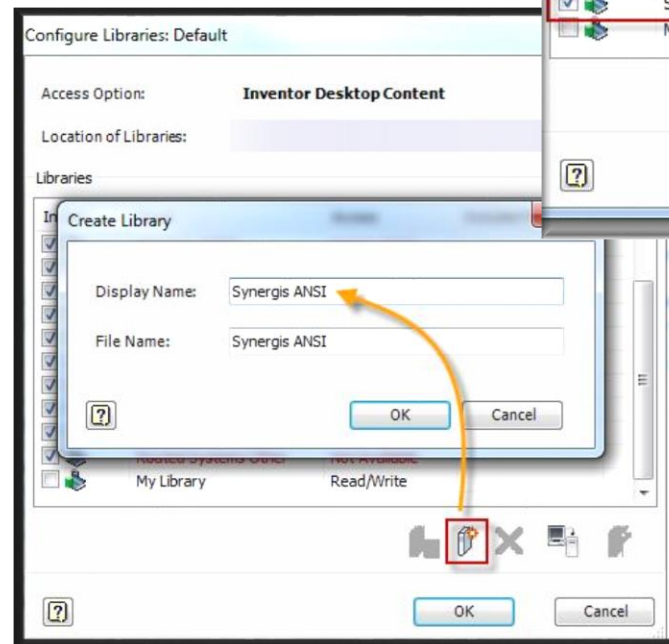


Step #2

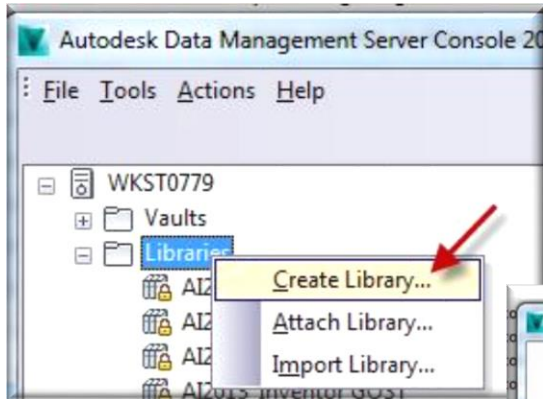
Create Library

Enter Display and File Name

Enable it



Create Vault CC Custom Library



Step #1

Access ADMS Console per a Vault Admin or Content Center Admin Account

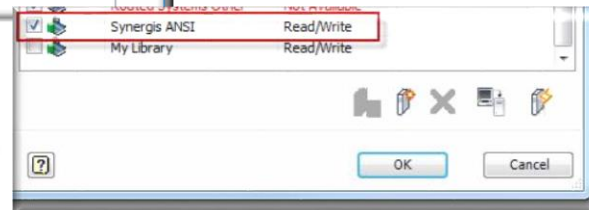
Create Library/Assign Display Name/Assign Partition



Step #2

Access Inventor Project File/Edit State

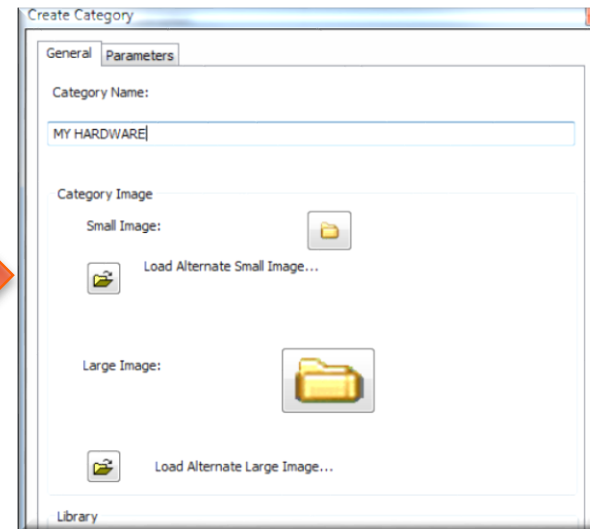
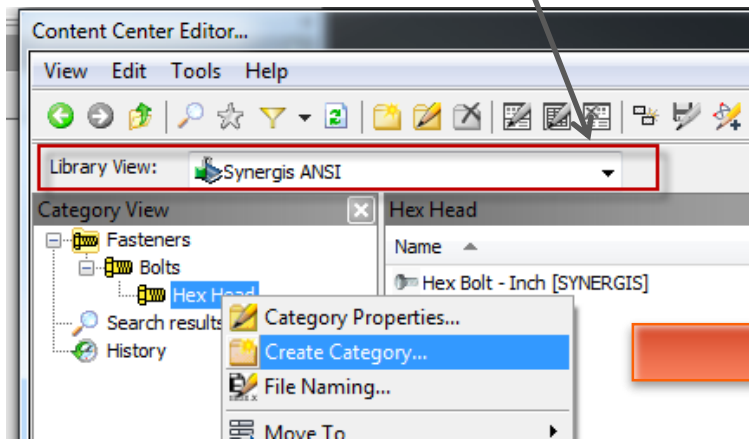
Configure Content Center/Enable it



Step #1: Create your Category/Location

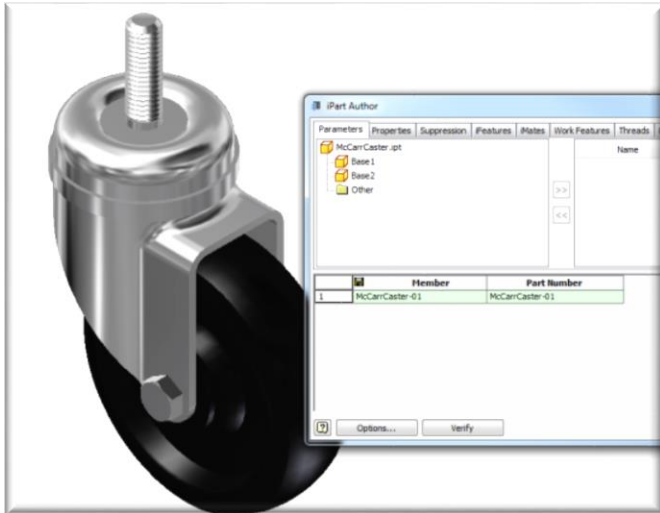
Set your library view to your read/write library in order to create your categories

PLAN AHEAD!!!



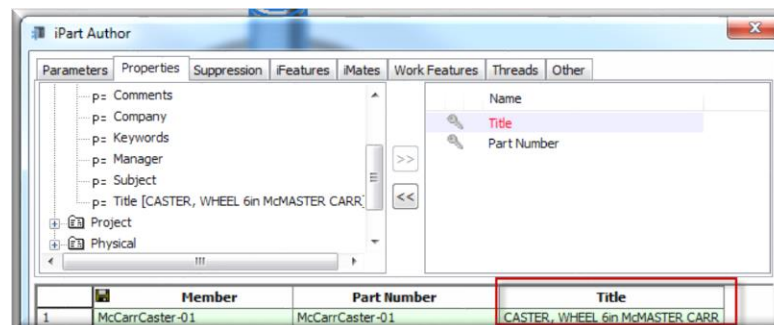
- Copy from existing before making your own
- Design Accelerators - Under Hardware/Shaft Parts
- Frame Gen - Under Structure Shapes
- Routed Sys - Under Tube & Pipe
- Cable & Harness - Under Cable & Harness
- IDF - Under IDF

Step #2: Define the Actual Part

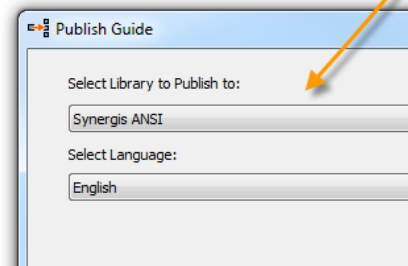
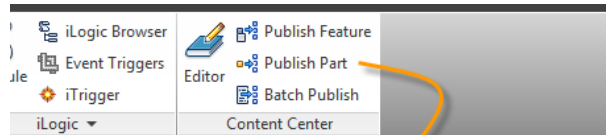


- Model (or download) your content center component
- Define parameters/iProperties
- Create an iPart
 - Create an unique member name
 - Always include the Part Number field
 - Only add information that will change
 - Define at least one row
 - Keep it simple
- Set color scheme to “Presentation”, turn off sketches, work planes, axis, and points
- Save your iPart

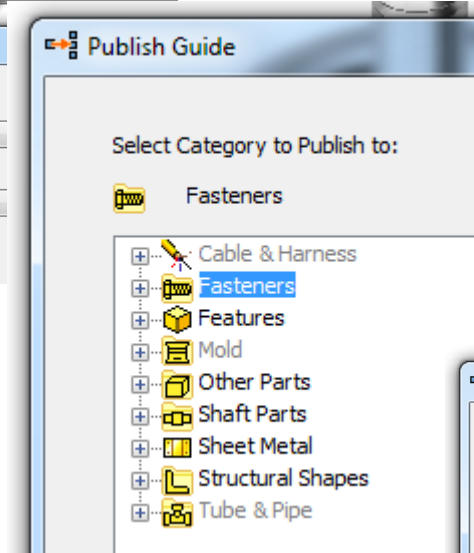
If you downloaded a model and there is no information needed in table, add at least one iProperties to it



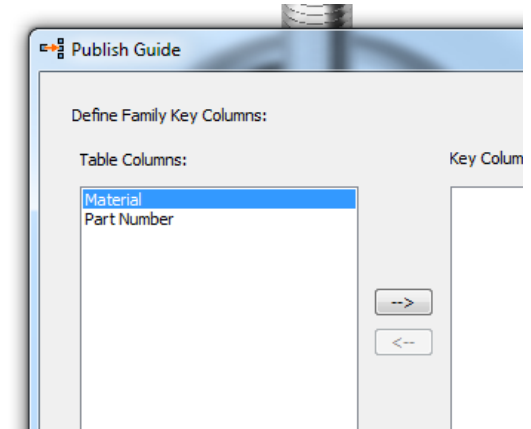
Step #3: Publish Part



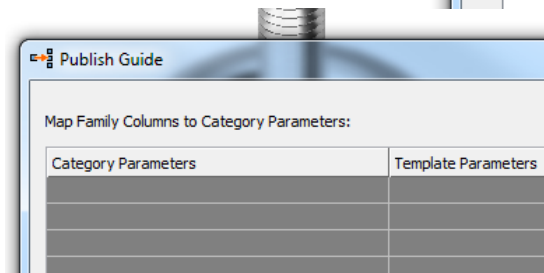
Publish Part



Location (Category)



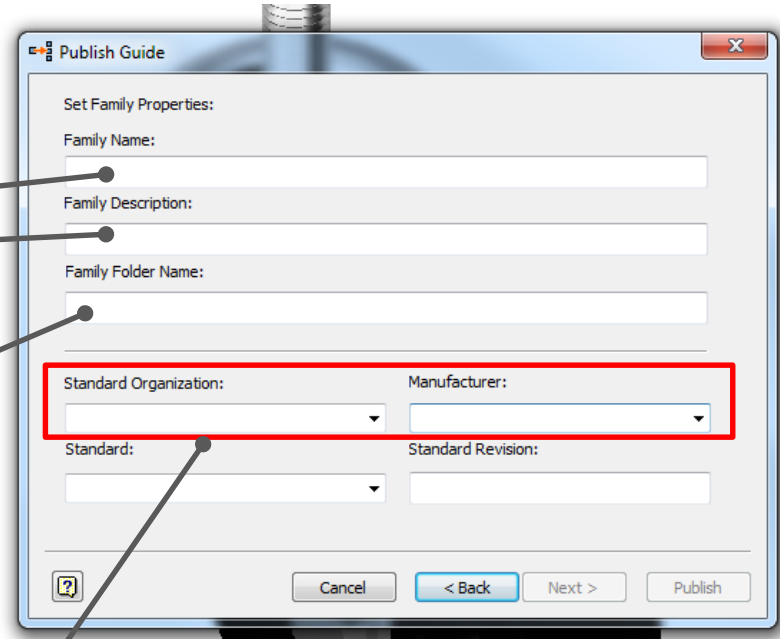
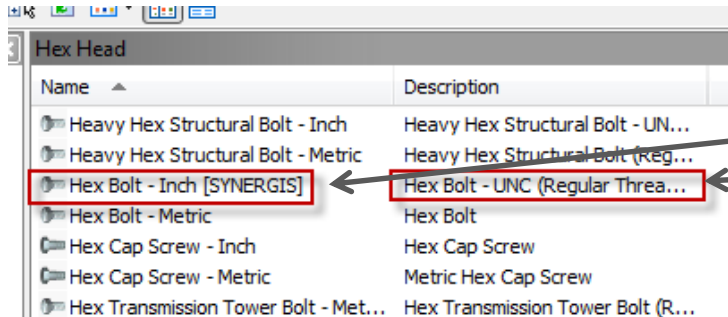
Key Columns



Mapping Category Parameters

(Component, Structural, Tube & Pipe, Cable and Harness, and IPF)

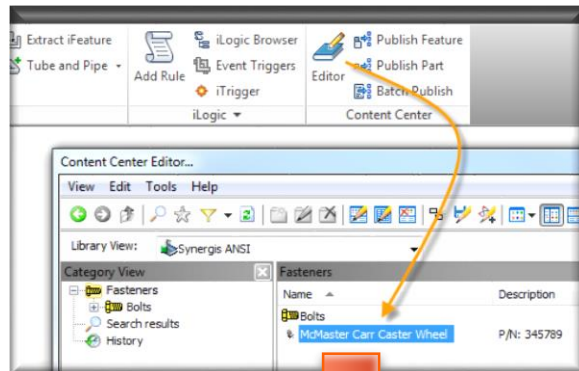
Step #3: Publish Part



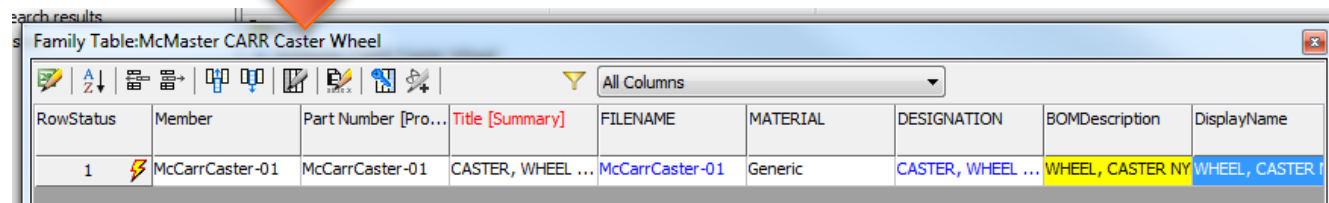
Same folder name can be used as long as there are unique member names residing in it

Family Properties

Step #4: Setting up Family Table



- **Communicate to your team you are editing a family table**
- If required, create all necessary columns
- Set up column expressions/mappings
- Define your key columns
- Unique file name
- Take advantage of Member.DisplayName
- Add members/row information
- Don't hit <ESC> (escape key)
- Apply changes often
- Watch your Vault inactive time.



A screenshot of the Family Table for 'McMaster CARR Caster Wheel'. The table has the following columns: RowStatus, Member, Part Number [Pro...], Title [Summary], FILENAME, MATERIAL, DESIGNATION, BOMDescription, and DisplayName. The first row contains the following data:

RowStatus	Member	Part Number [Pro...]	Title [Summary]	FILENAME	MATERIAL	DESIGNATION	BOMDescription	DisplayName
1	McCarrCaster-01	McCarrCaster-01	CASTER, WHEEL ...	McCarrCaster-01	Generic	CASTER, WHEEL ...	WHEEL, CASTER NY	WHEEL, CASTER I

FINALLY THOUGHT...

Need in-depth training for Inventor Content Center and/or Library Configuration?



Synergis Engineering Design Solutions regularly sits down with customers to develop an implementation and training plan that is tailored to meet your needs.



If you interested in having a copy of my Content Center Management Document and/or this presentation, please send a request to Mark.Lancaster@Synergis.com and I will gladly share this information with you.

Q&A Session

