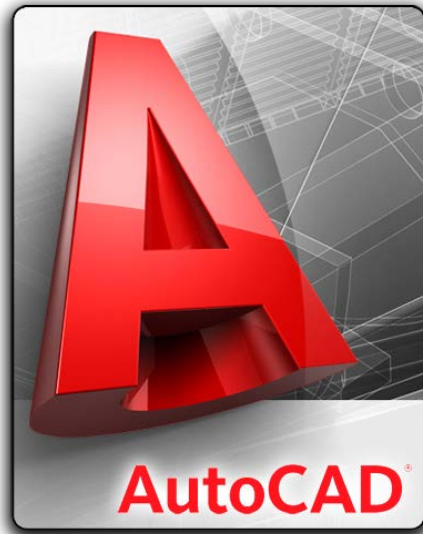


# AutoCAD Batch Plot Multiple Printing



**By: Adil Khurshid**



**Batch Plot:-** Batch plot is an AutoCAD in built feature to publish multiple sheets or drawings to PDF files. It can also be used for publishing to a plotter, printer, or DWF.

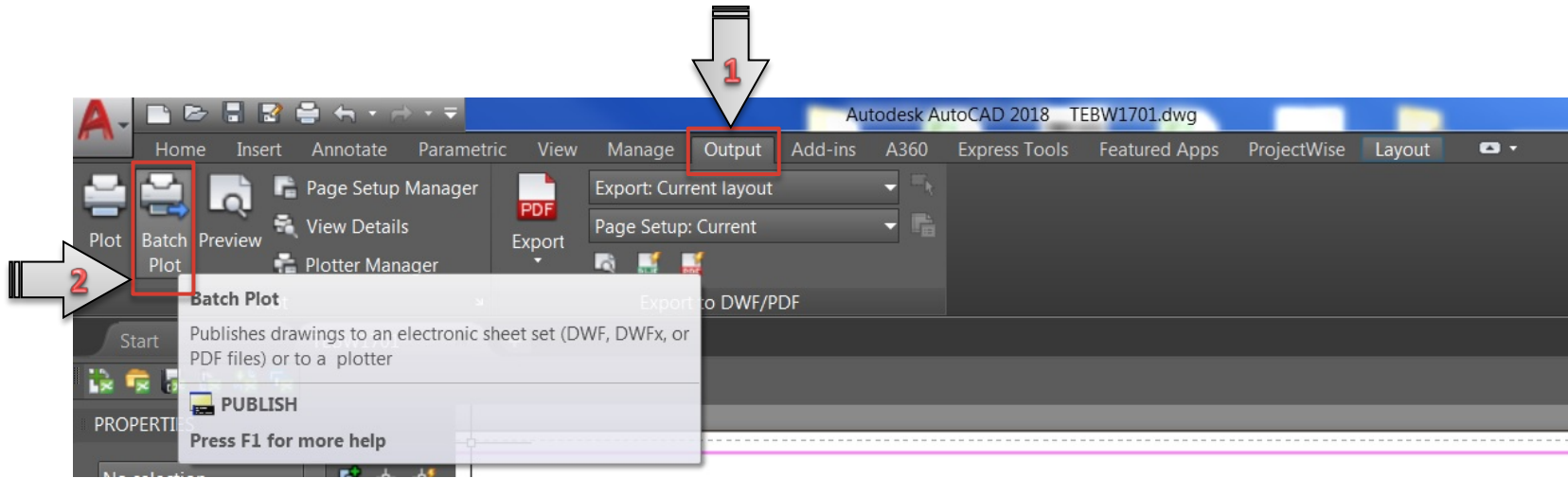
- Way to access Batch Plot feature.
  - **AutoCAD Menu**
  - **Output Tab**
  - **Publish Command**
- Add, Remove, Move and Preview of sheets.
- Save Batch plot setting .dsd file.
- PDF Preset (.pc3) files and application.
- Publish options and setting.



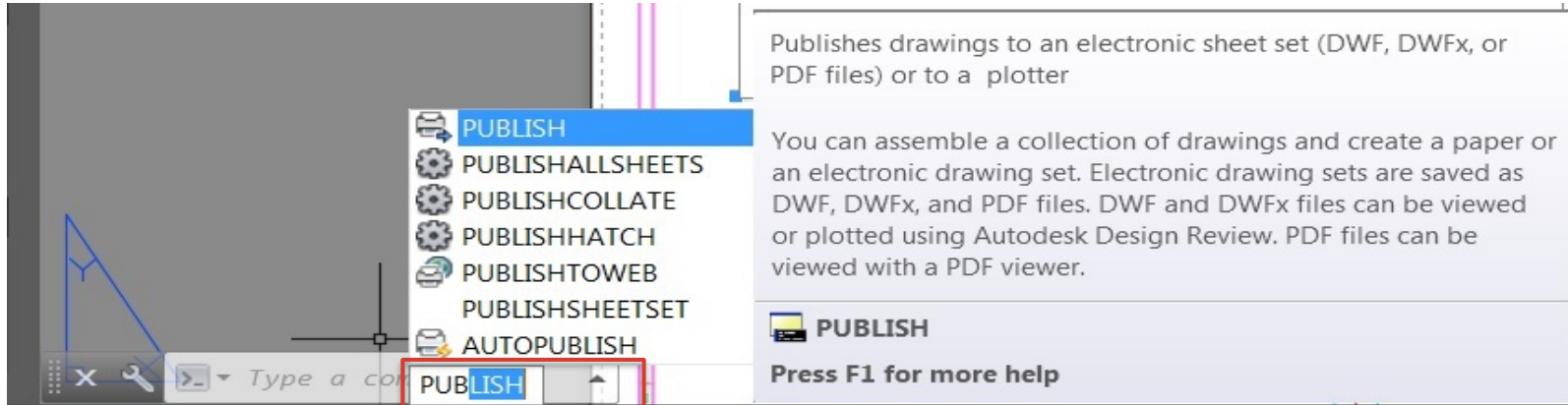
Click, AutoCAD Menu -> Print -> Batch Plot

The screenshot displays the Autodesk AutoCAD 2018 interface. The top ribbon shows the 'Layout' tab. The 'File' menu is open, showing the 'Print' option highlighted with a red box and a grey arrow labeled '2'. The 'Print' sub-menu is also open, with 'Batch Plot' highlighted by a red box and a grey arrow labeled '3'. A grey arrow labeled '1' points to the 'A' icon in the top-left corner of the software window. The background shows a technical drawing with a green line and dimensions: 28'-4" (horizontal), 27'-6 1/2" (vertical), and 3'-0" (vertical). A blue triangle is also visible in the drawing area.

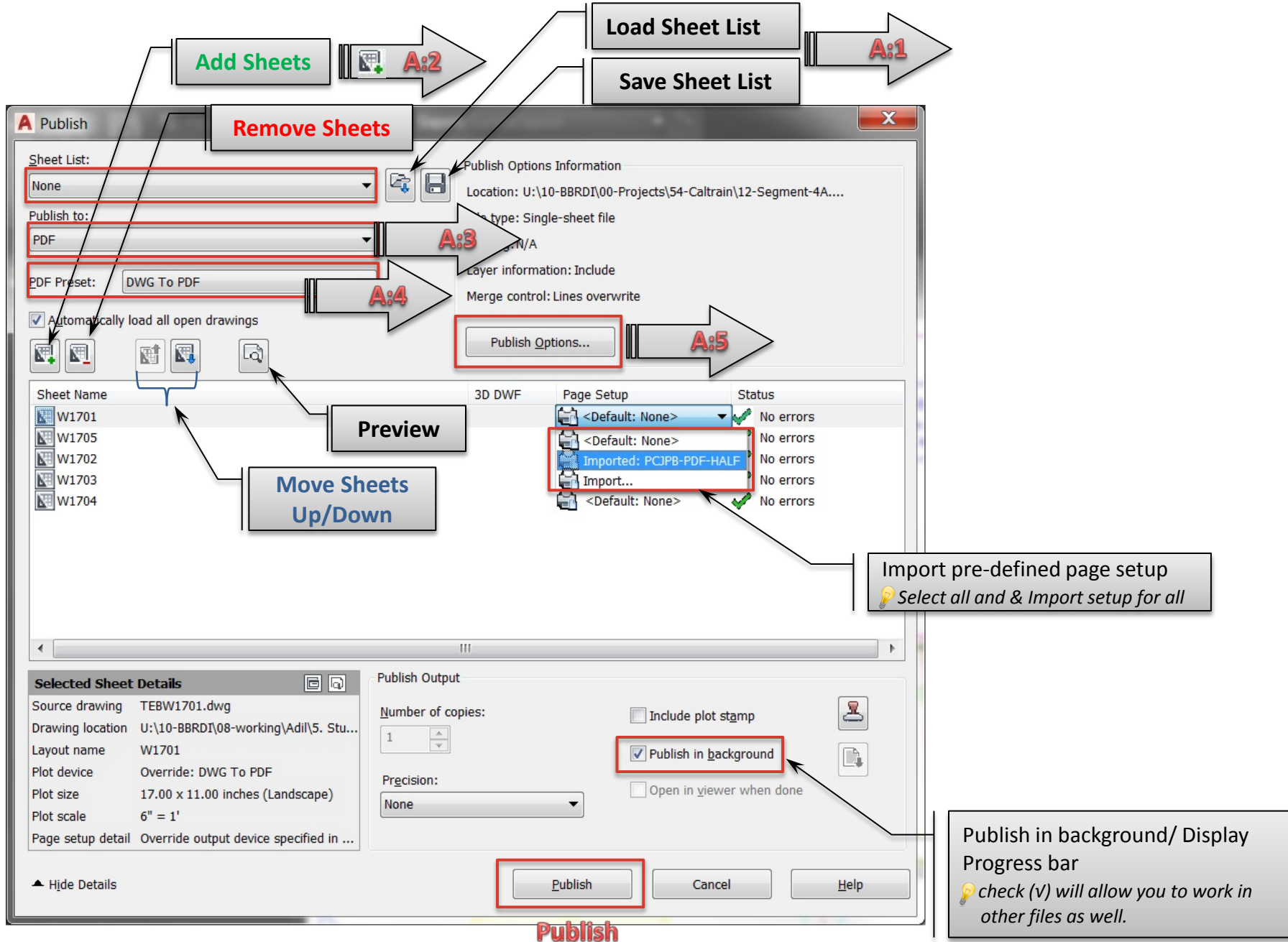
Output Output Tab -> Batch Plot




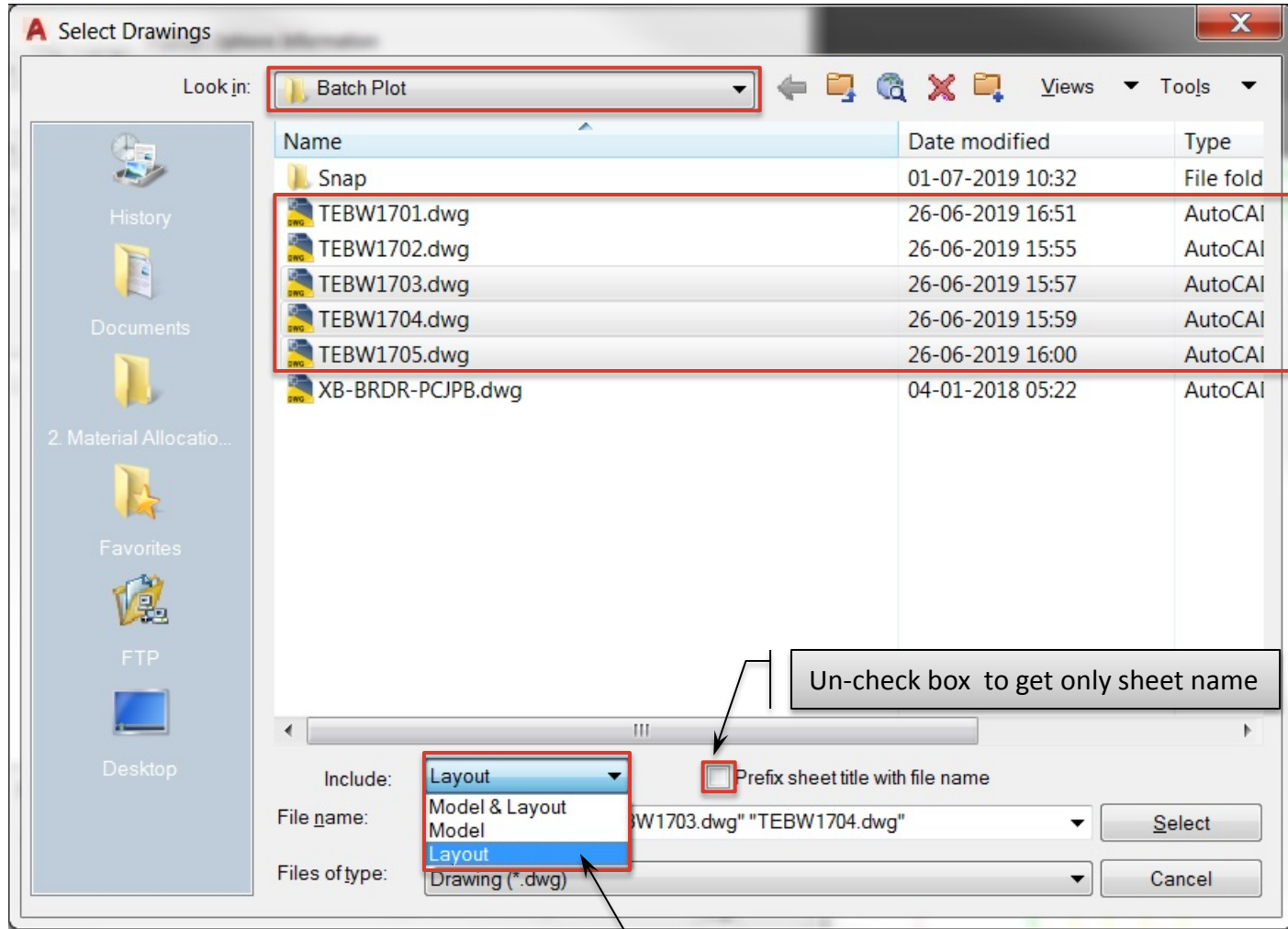
C:\ Publish Command: AutoCAD PUBLISH open the Batch plot window.



Type PUBLISH command here.



 Add sheets which you want to print in batch.



**Select Drawings**

Look in: Batch Plot

Name	Date modified	Type
Snap	01-07-2019 10:32	File fold
TEBW1701.dwg	26-06-2019 16:51	AutoCAD
TEBW1702.dwg	26-06-2019 15:55	AutoCAD
TEBW1703.dwg	26-06-2019 15:57	AutoCAD
TEBW1704.dwg	26-06-2019 15:59	AutoCAD
TEBW1705.dwg	26-06-2019 16:00	AutoCAD
XB-BRDR-PCJPB.dwg	04-01-2018 05:22	AutoCAD

Include: Layout

File name: W1703.dwg "TEBW1704.dwg"

Files of type: Drawing (\*.dwg)

Prefix sheet title with file name

Select

Cancel

**Select Sheets**

**Un-check box to get only sheet name**

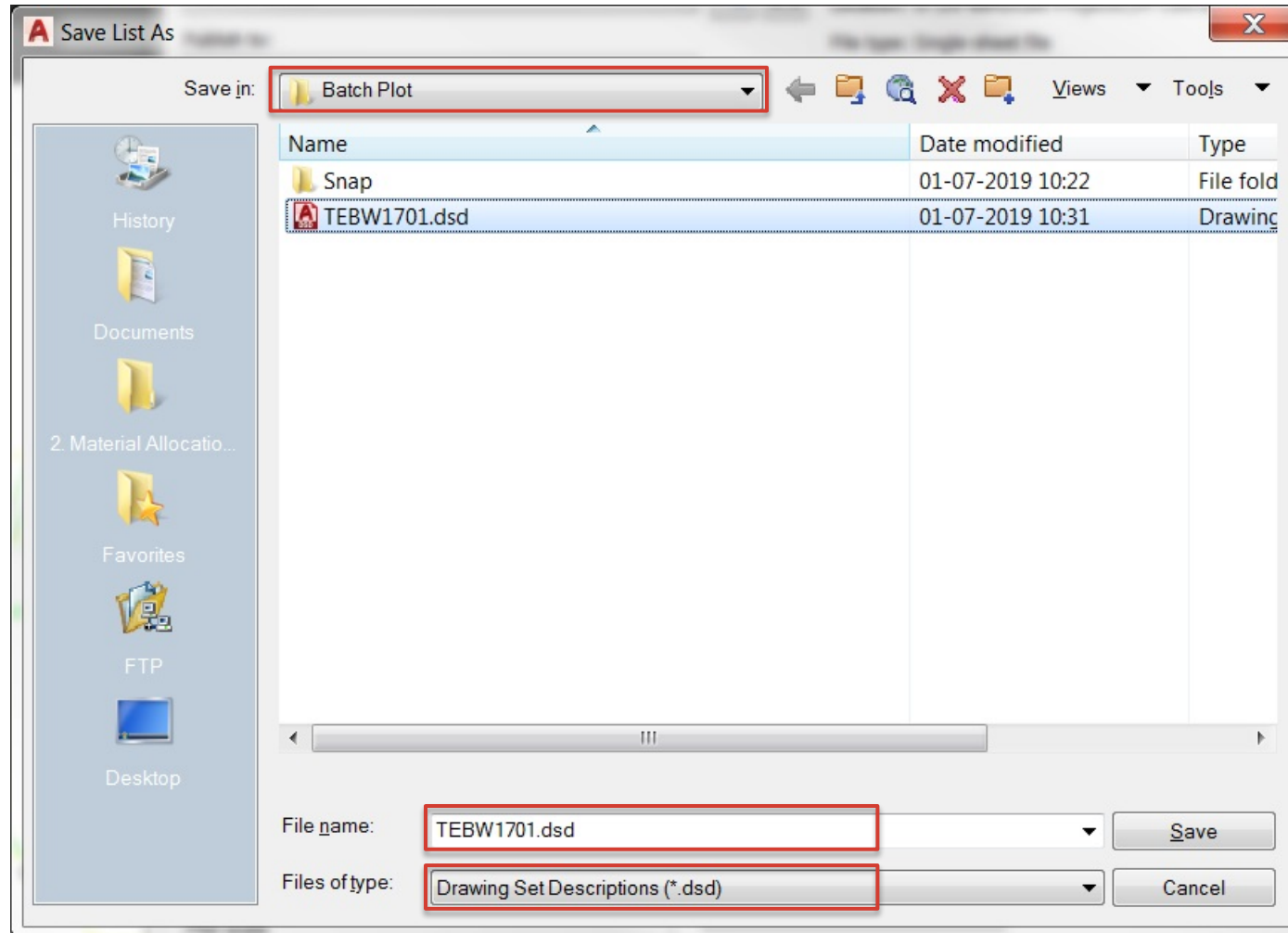
**Layout: If you wish to print sheets only**



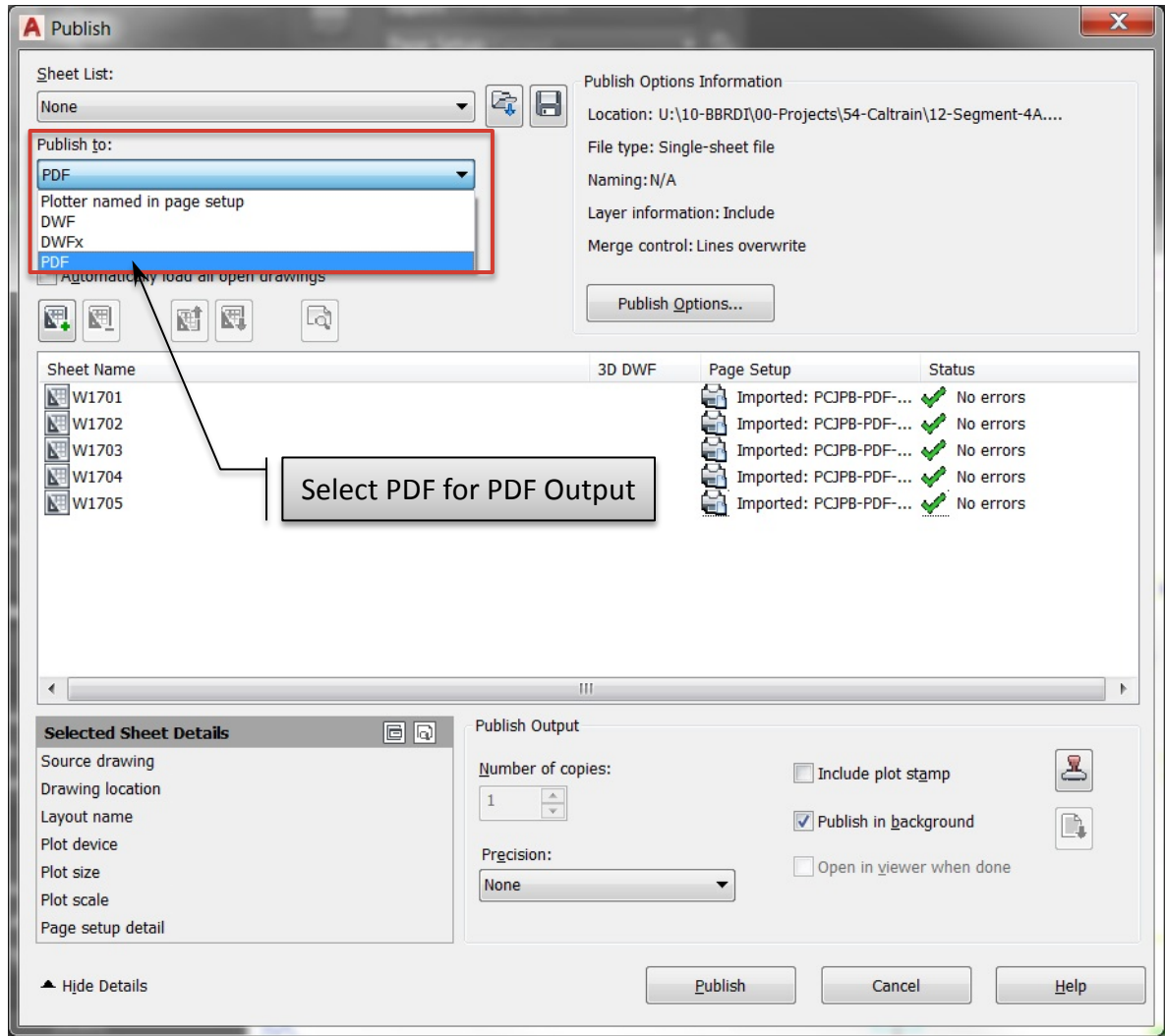
Import **.dsd** file to load sheet list and saved setting.



Save **.dsd** file with sheet list and batch plot setting for future use.



**Publish to:** Option to select **Out type** (DWF, PDF, Plotter, Printer).





PDF Preset: Option to select PDF out type (Quality, Size & Resolution based)

**PDF Output types**

Default PDF Preset.pc3 files	Layer Info	Hyperlinks	Bookmark	File Size
AutoCAD PDF (General Documentation).pc3	√	√	√	High
AutoCAD PDF (High Quality Printing).pc3	√	√	√	Very High
AutoCAD PDF (Smallest File).pc3	X	X	X	Small
AutoCAD PDF (Web and Mobile).pc3	√	√	√	*Small

\*Small= produces PDF files optimized for viewing on mobile devices and Web browsers.

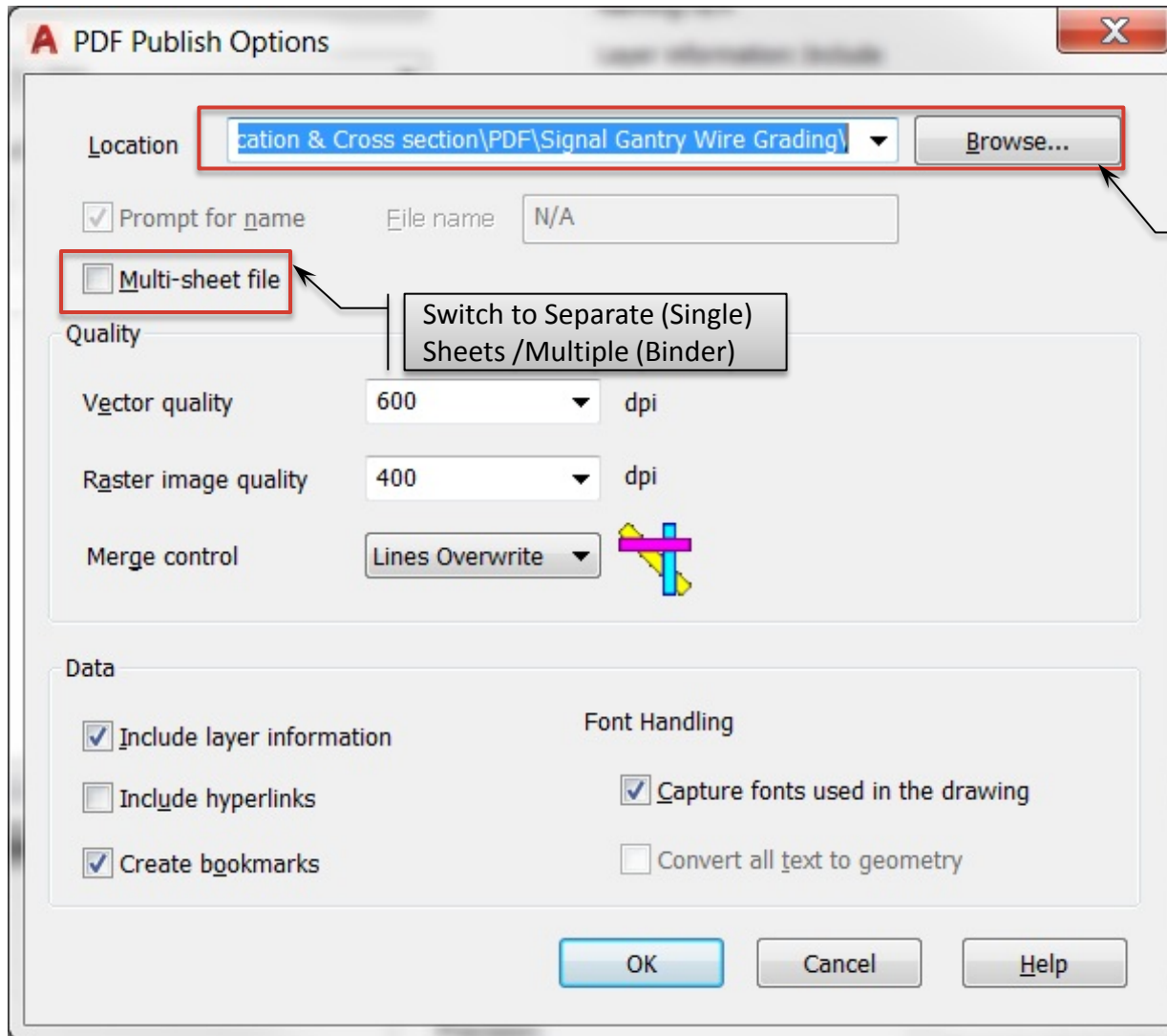
You can create custom .pc3 file based on your requirement. **PLOTTERMANAGER** -> Add-A-Plotter Wizard -> Complete the steps in the wizard

Publish Options...

PDF Publish destination and plot setting window.

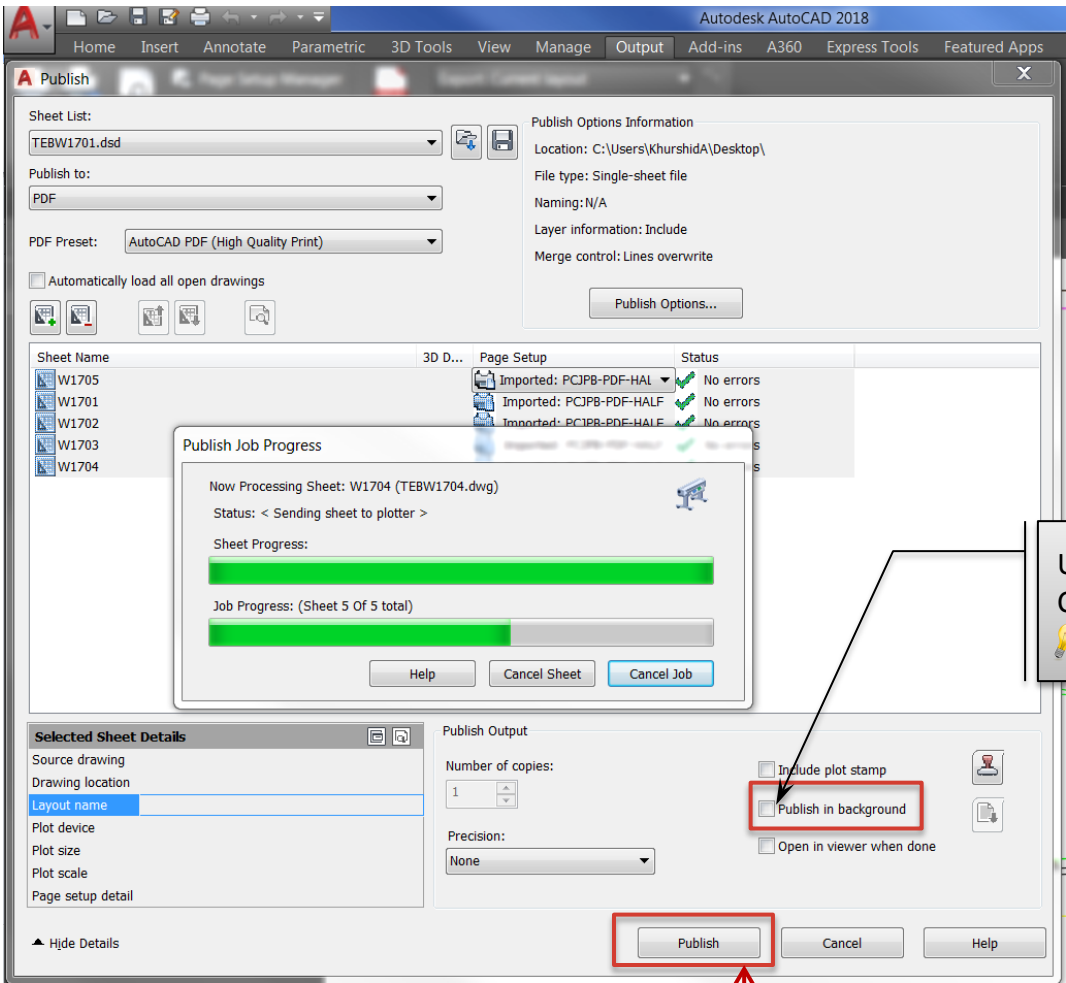
Publish Options...

A:5

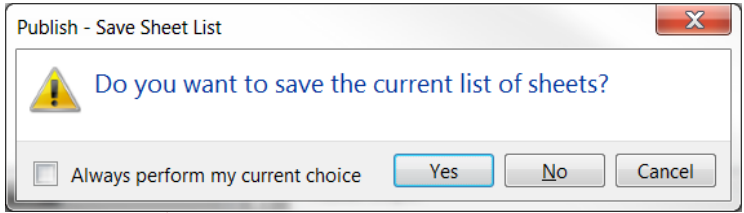


Set your output destination

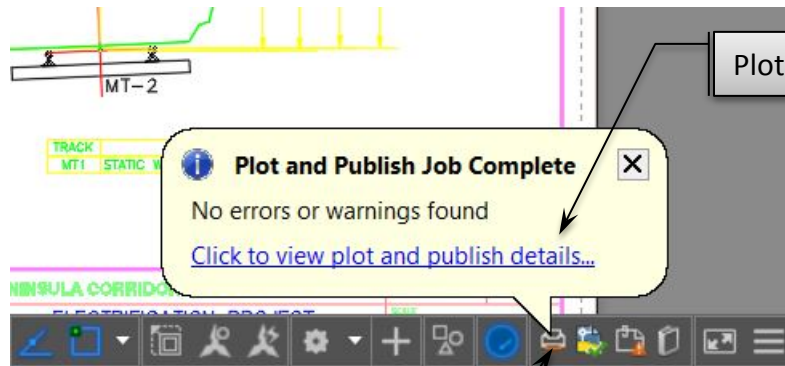
**Publish** PDF Publish & Job Progress bar.



Un-check: Popup and run **Publish Job Progress**  
Check: Publish will perform in background  
💡 un-check () will not allow you to work in other files during progress.



Click **Publish** will popup **Save Sheet List (.psd)** option prior to publish.  
💡 If you forget to save earlier you have another chance to save **.psd**.

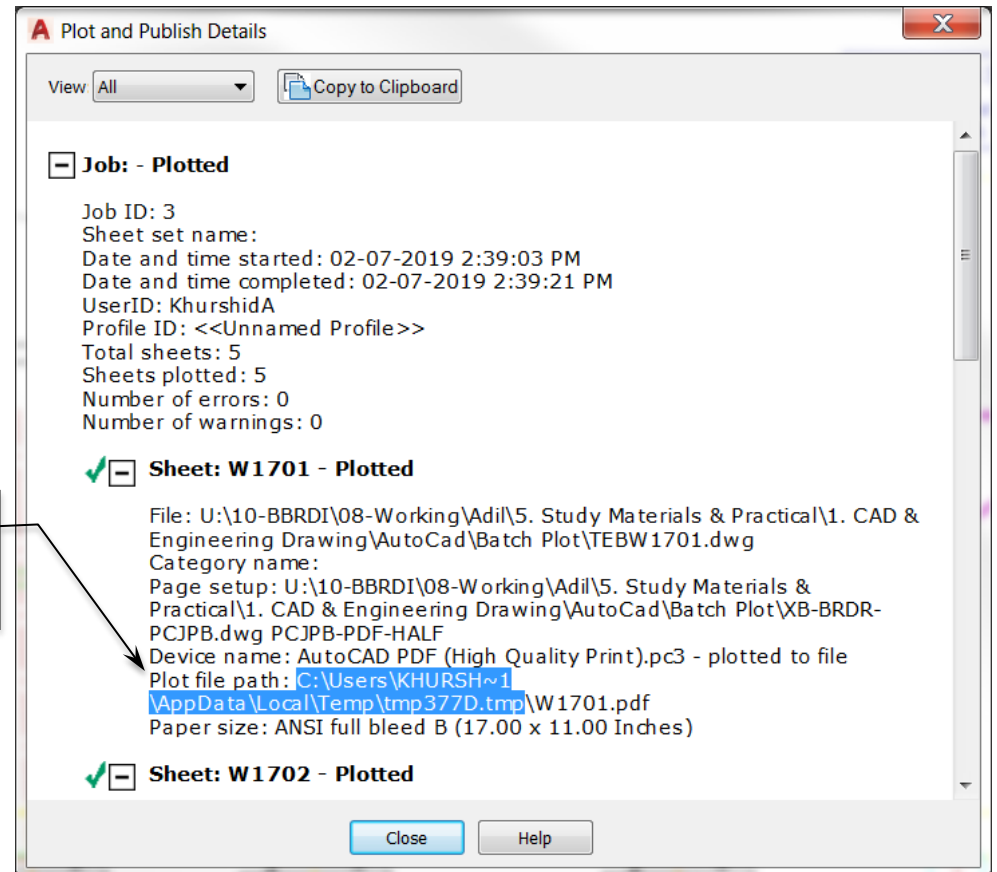


Plot and Publish Details

**Plot and Publish Job Complete**  
No errors or warnings found  
[Click to view plot and publish details...](#)

Publish in background Status

In case your **Publish** (PDF) files unable to save in allocated path  
Go to **Plot file Path**: <C:\Users\KHURSH~1\AppData\Local\Temp\tmp337D.tmp> to access you output file.



**A** Plot and Publish Details

View All

**Job - Plotted**

Job ID: 3  
Sheet set name:  
Date and time started: 02-07-2019 2:39:03 PM  
Date and time completed: 02-07-2019 2:39:21 PM  
UserID: KhurshidA  
Profile ID: <<Unnamed Profile>>  
Total sheets: 5  
Sheets plotted: 5  
Number of errors: 0  
Number of warnings: 0

**Sheet: W1701 - Plotted**

File: U:\10-BBRDI\08-Working\Adil\5. Study Materials & Practical\1. CAD & Engineering Drawing\AutoCad\Batch Plot\TEBW1701.dwg  
Category name:  
Page setup: U:\10-BBRDI\08-Working\Adil\5. Study Materials & Practical\1. CAD & Engineering Drawing\AutoCad\Batch Plot\XB-BRDR-PCJPB.dwg PCJPB-PDF-HALF  
Device name: AutoCAD PDF (High Quality Print).pc3 - plotted to file  
Plot file path: <C:\Users\KHURSH~1\AppData\Local\Temp\tmp337D.tmp\W1701.pdf>  
Paper size: ANSI full bleed B (17.00 x 11.00 Inches)

**Sheet: W1702 - Plotted**

Close

Help