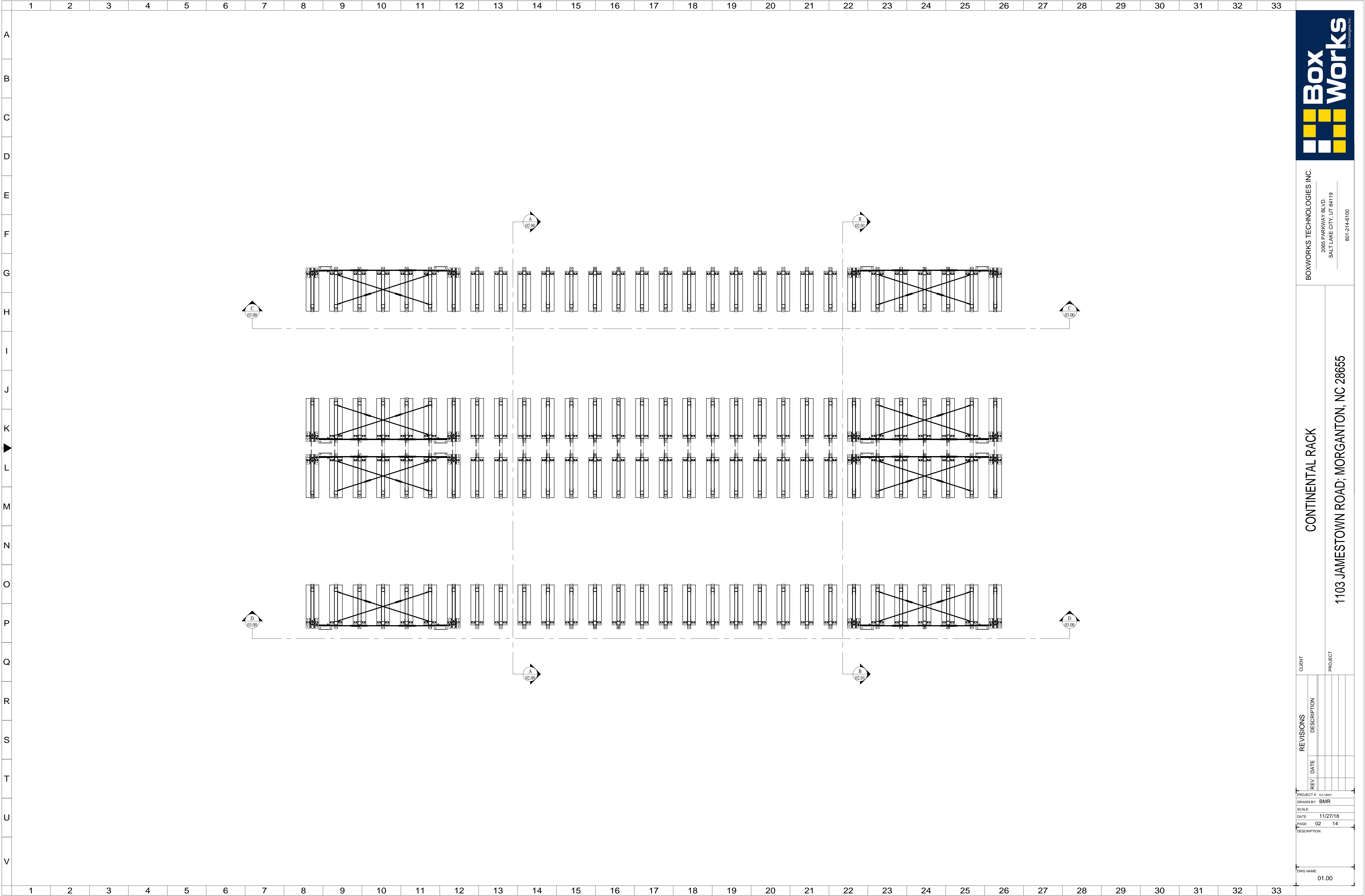


	1	2	3	4	5	6	7	8	9	10	11	12	13	14	15	16	17	18	19	20	21	22	23	24	25	26	27	28	29	30	31	32	33	
A																																		
B																																		
C																																		
D																																		
E																																		
F																																		
G																																		
H																																		
I																																		
J																																		
K																																		
▶																																		
L																																		
M																																		
N																																		
O																																		
P																																		
Q																																		
R																																		
S																																		
T																																		
U																																		
V																																		
	1	2	3	4	5	6	7	8	9	10	11	12	13	14	15	16	17	18	19	20	21	22	23	24	25	26	27	28	29	30	31	32	33	







BOXWORKS TECHNOLOGIES INC.  
2085 PARKWAY BLVD  
SALT LAKE CITY, UT 84119  
801-214-6100

CONTINENTAL RACK

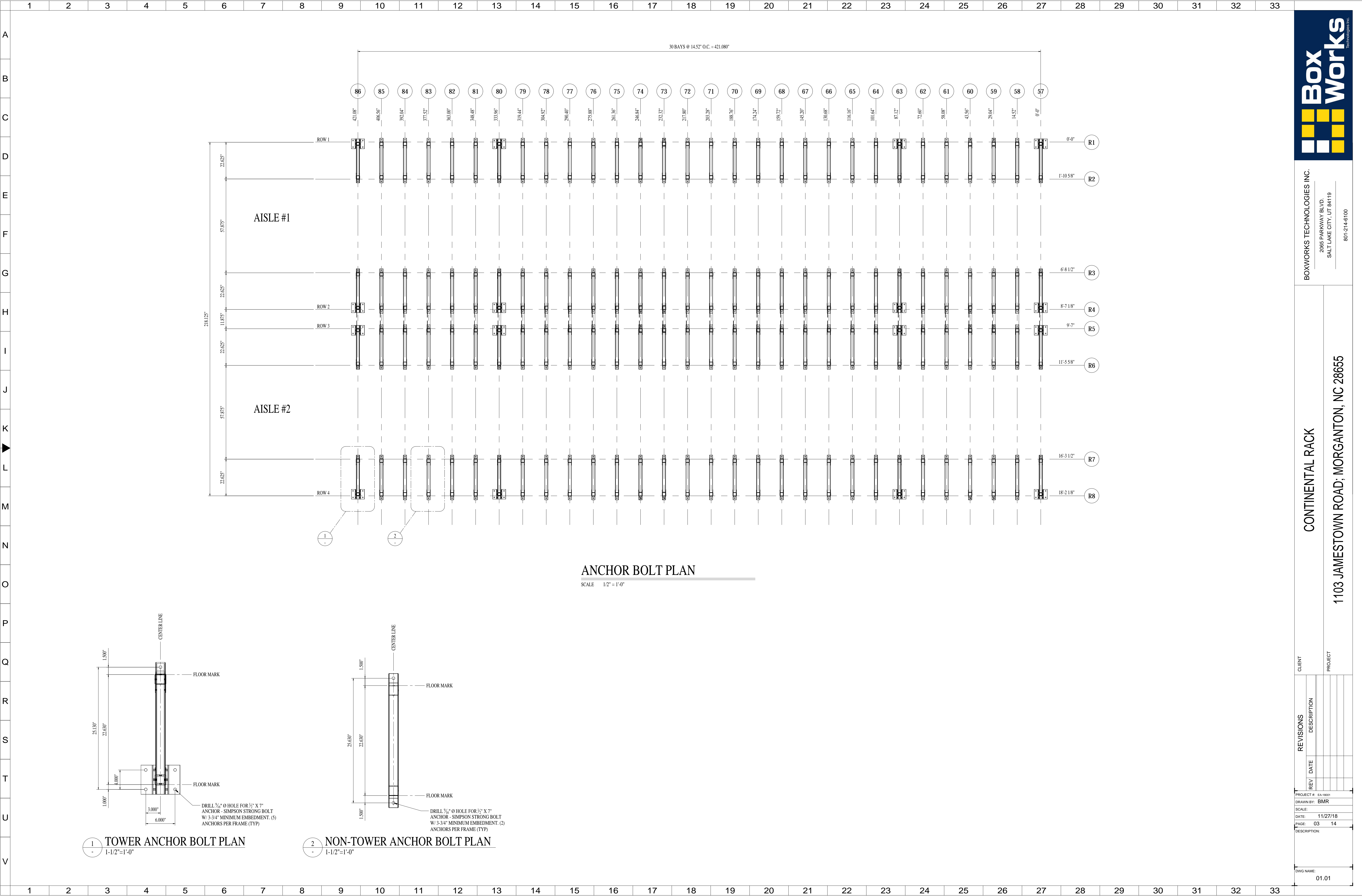
1103 JAMESTOWN ROAD, MORGANTON, NC 28655

REVISIONS	
REV	DESCRIPTION

PROJECT # EA-1001  
DRAWN BY: BMR  
SCALE:  
DATE: 11/27/18  
PAGE: 02 14  
DESCRIPTION:

DWG NAME:  
01.00

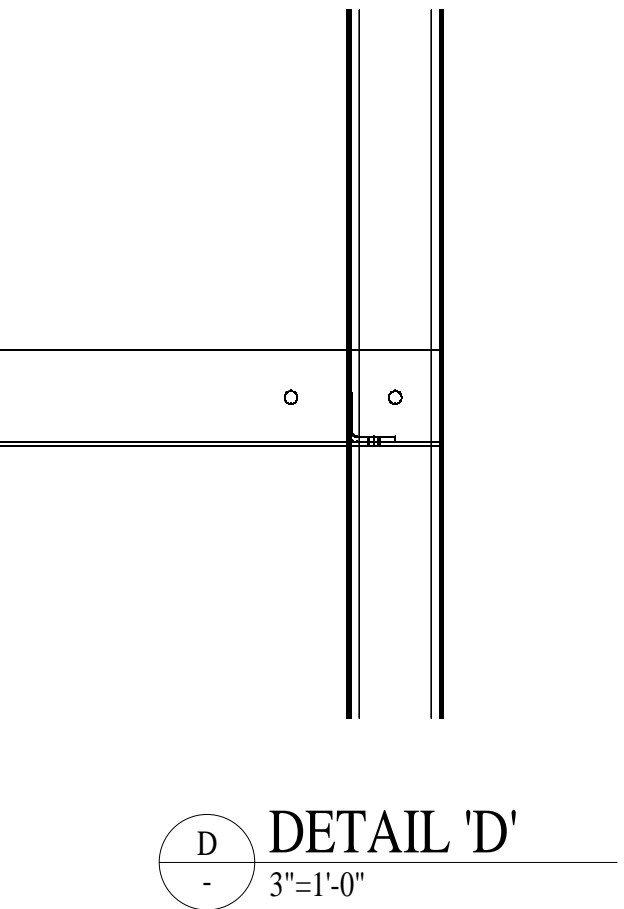
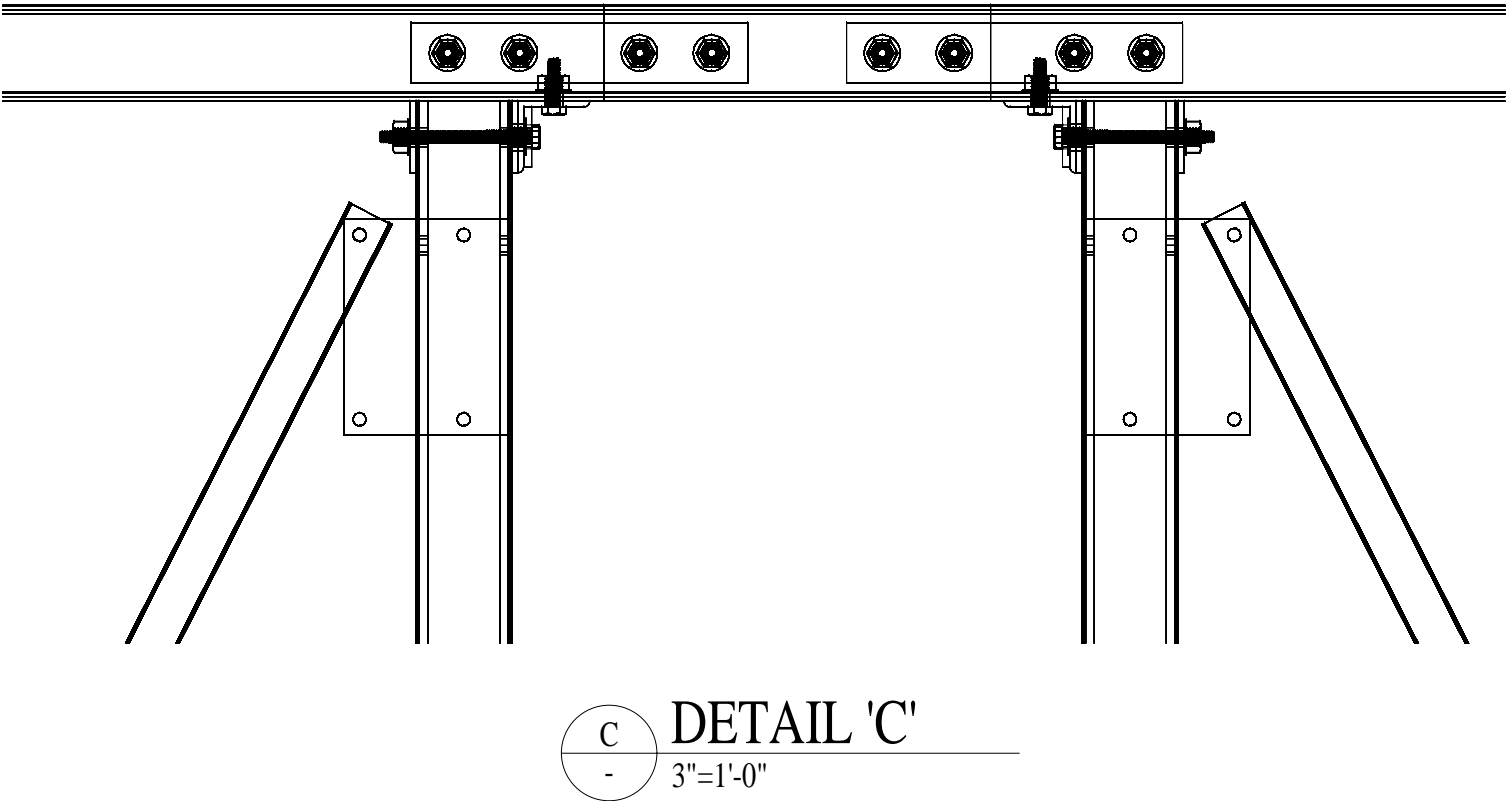
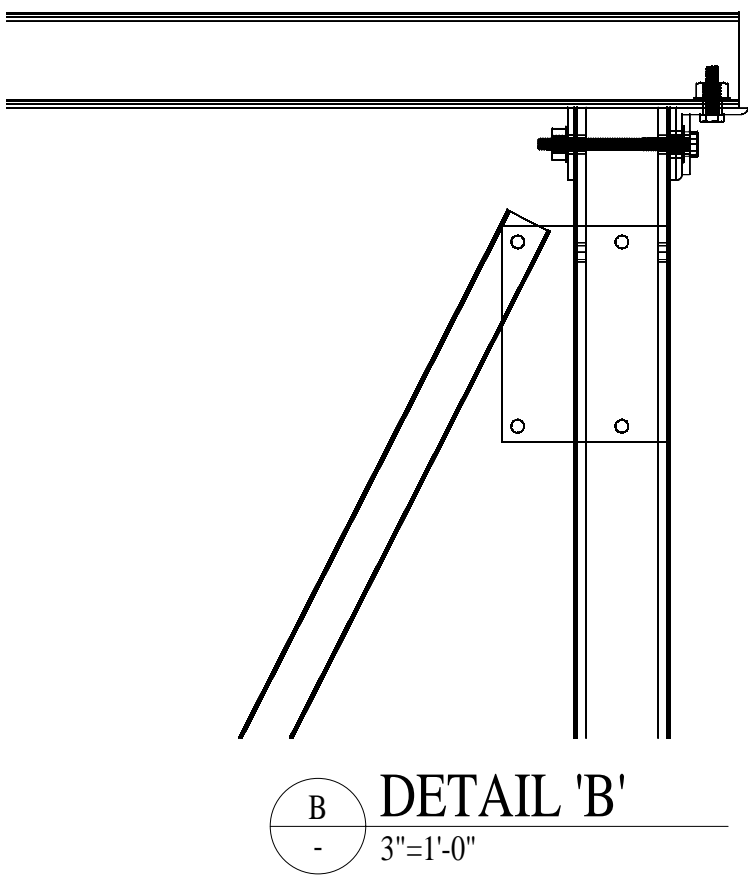
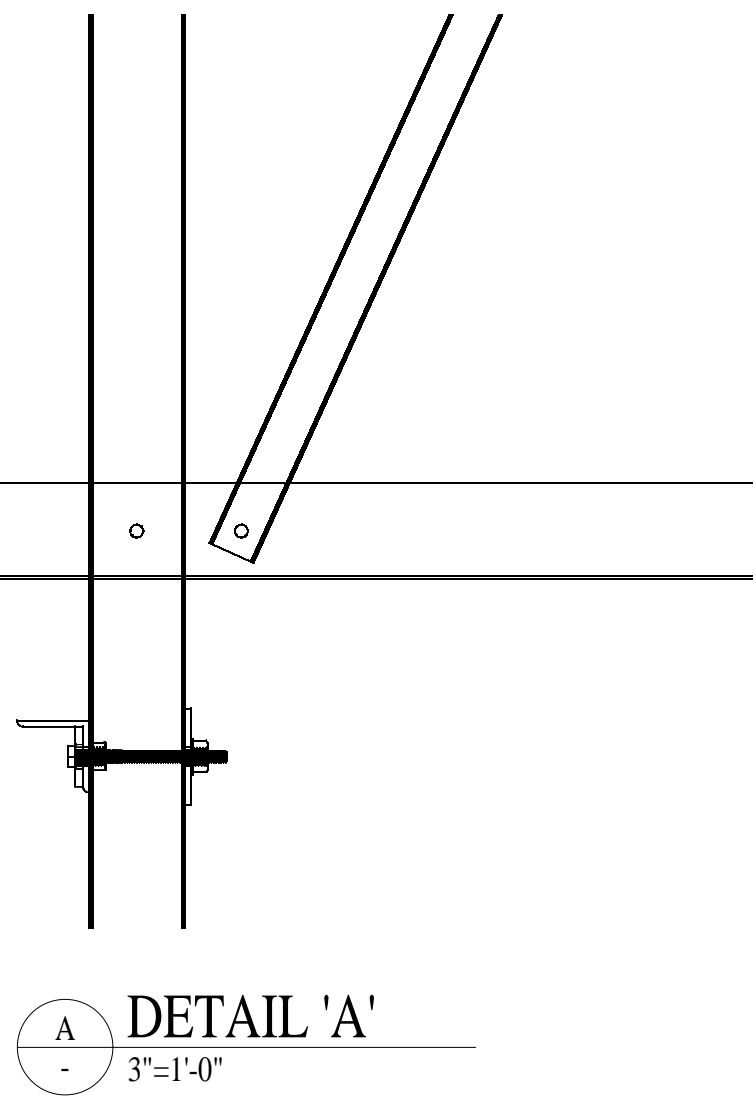
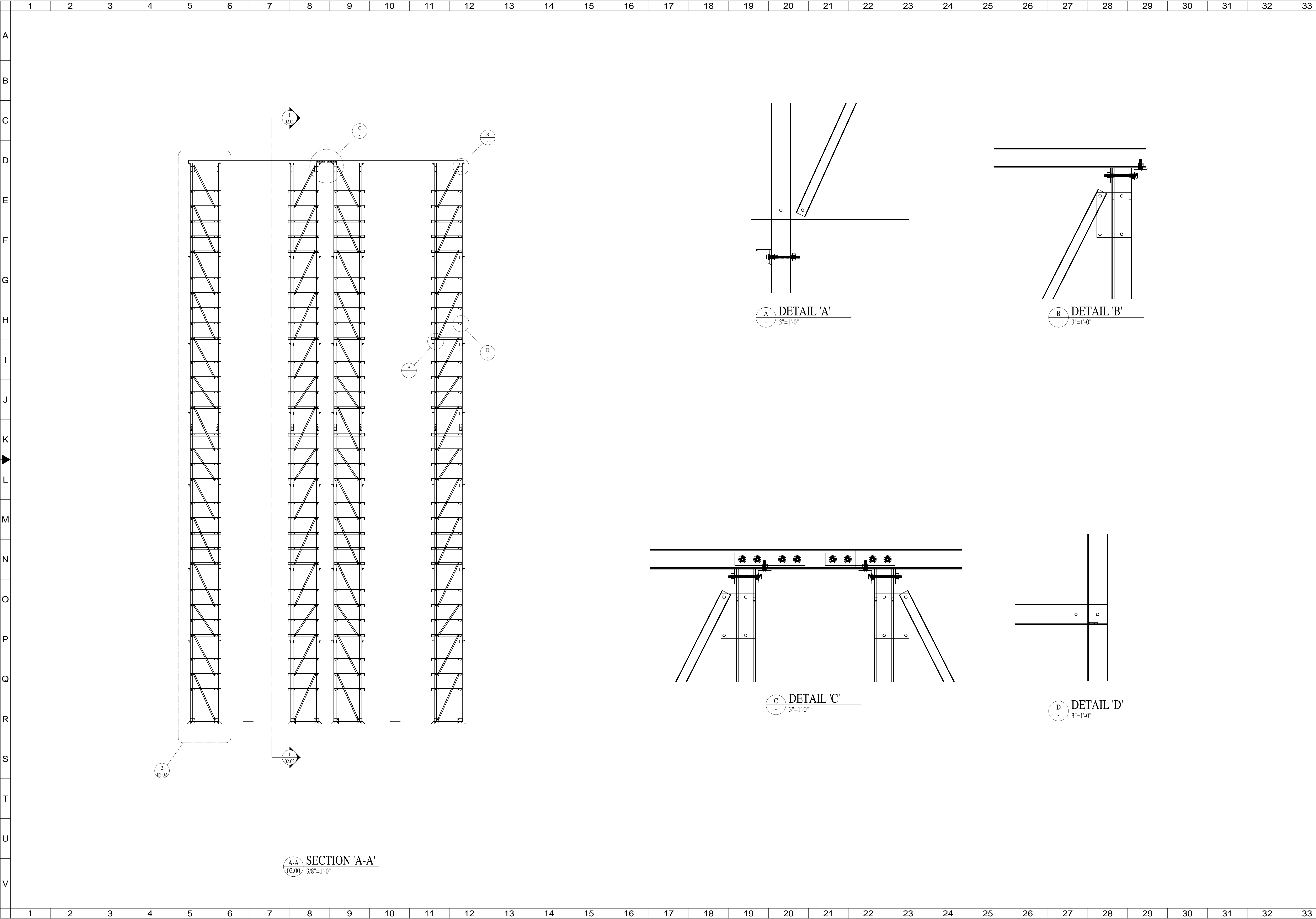












A-A  
02.00  
SECTION 'A-A'  
3/8"=1'-0"

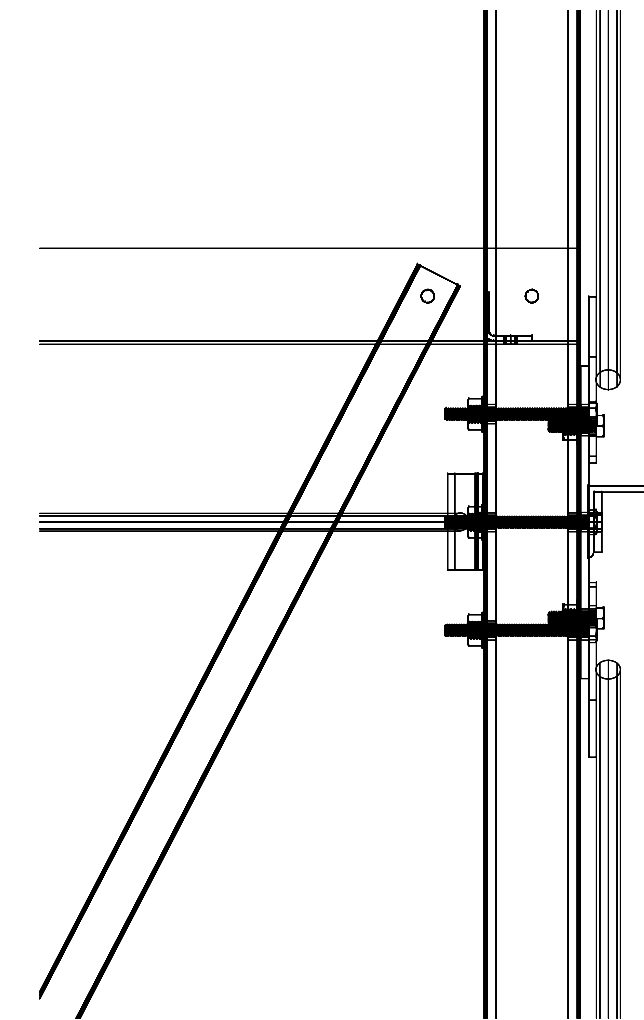
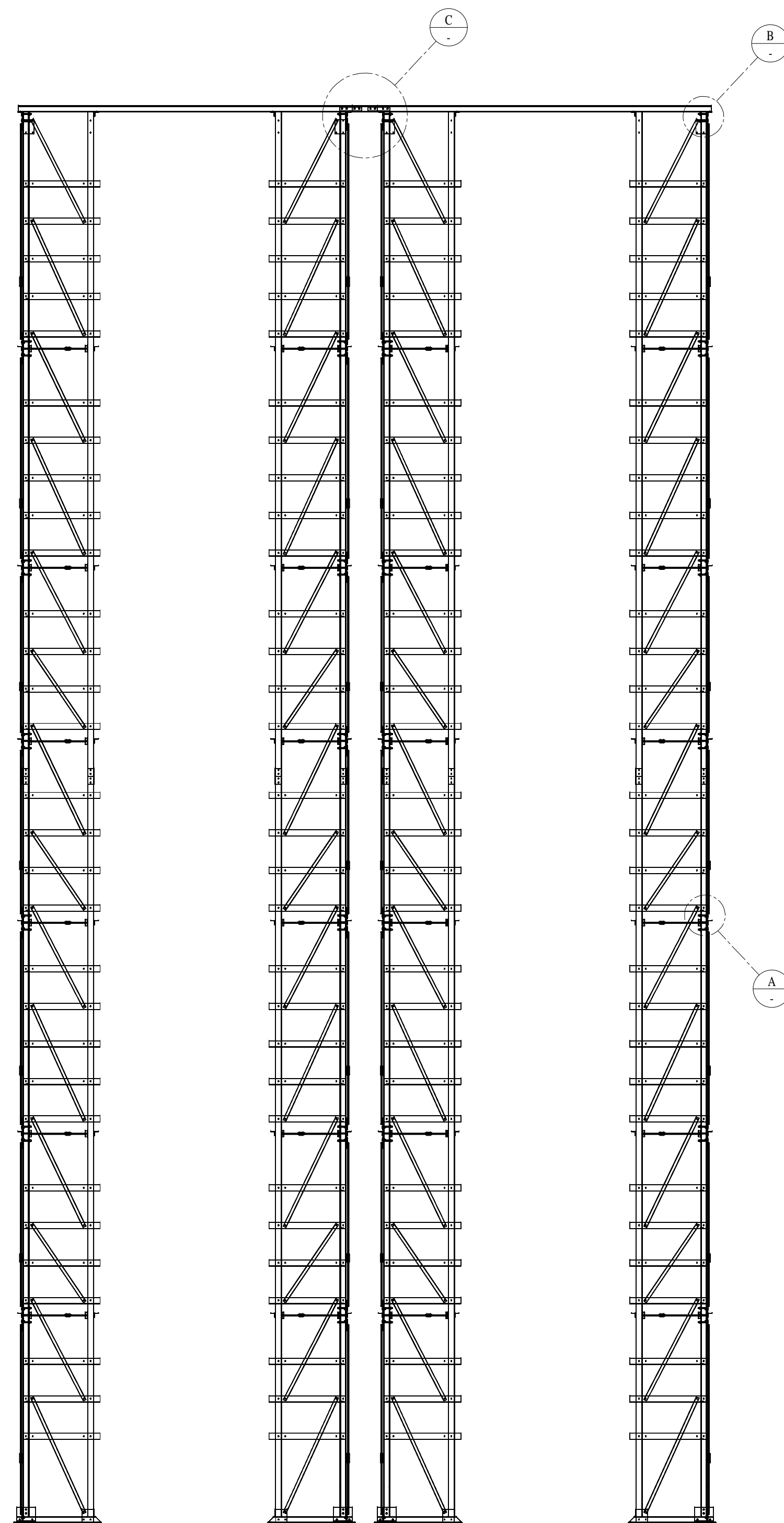



BOXWORKS TECHNOLOGIES INC.  
2085 PARKWAY BLVD  
SALT LAKE CITY, UT 84119  
801-214-6100

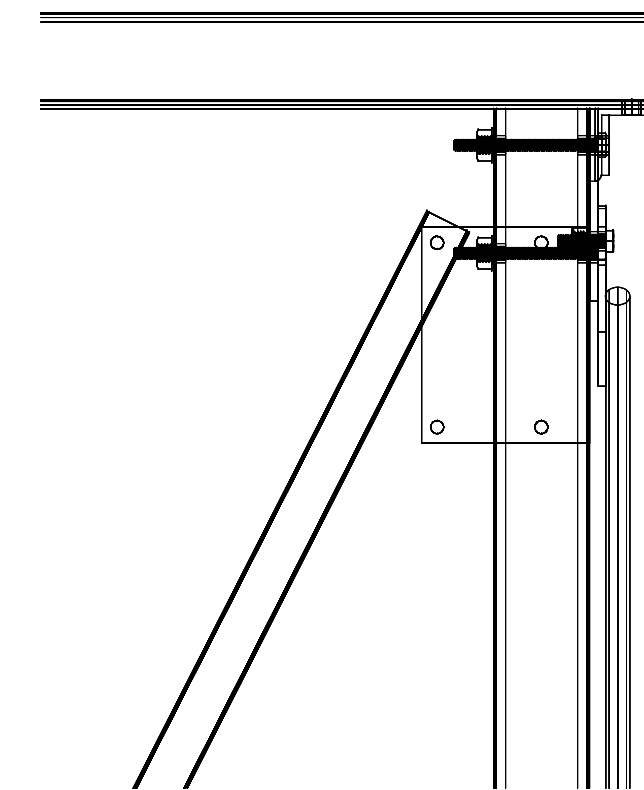
CONTINENTAL RACK  
1103 JAMESTOWN ROAD, MORGANTON, NC 28655


REVISIONS		CLIENT
REV	DATE	DESCRIPTION
PROJECT #		EA-1001
DRAWN BY:		BMR
SCALE:		11/27/18
DATE:		05 14
PAGE:		02.00
DESCRIPTION:		
DWG NAME:		02.00

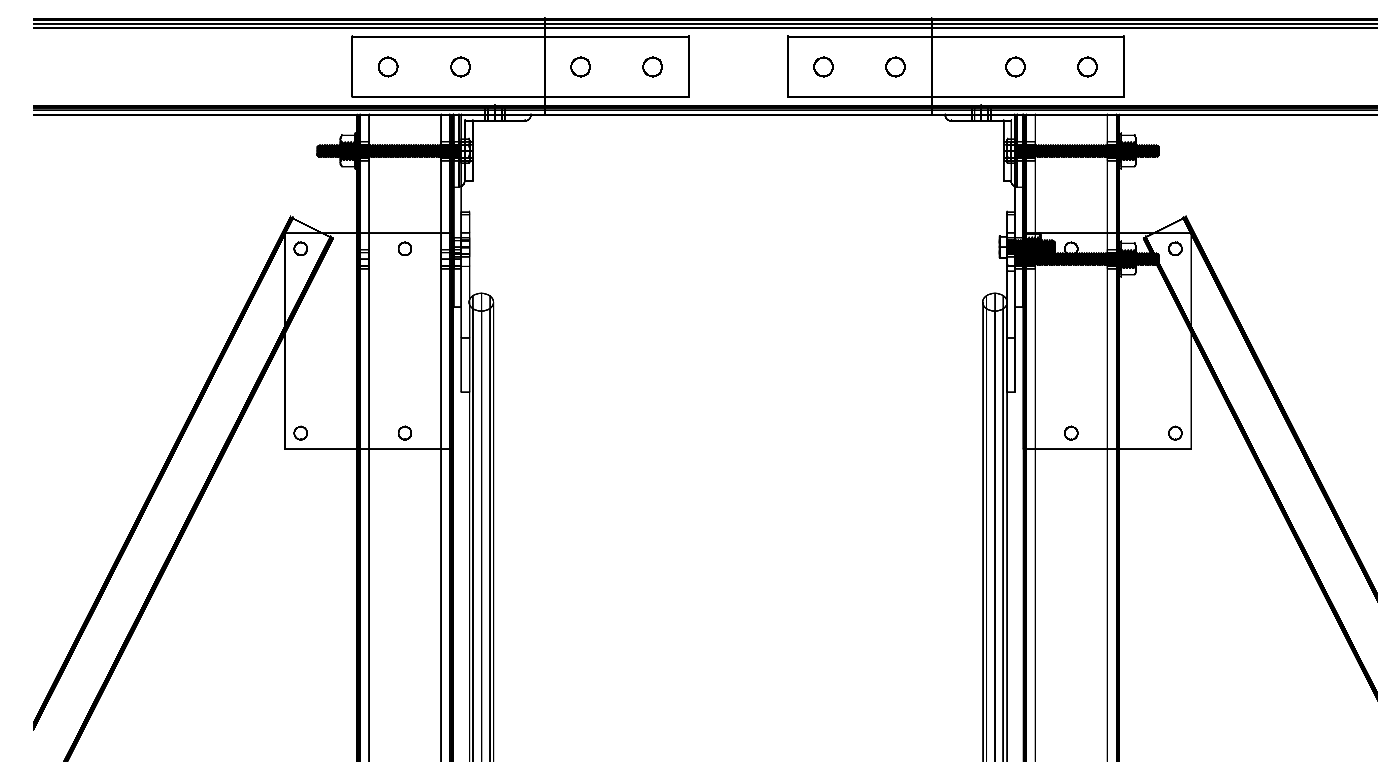




 DETAIL 'A'  
3"=1'-0"



 **DETAIL 'B'**  
3"=1'-0"



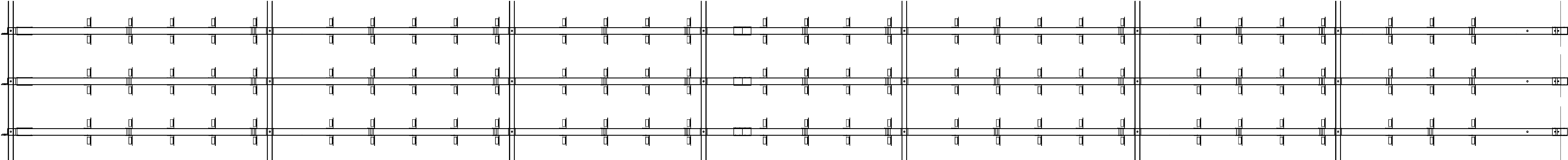
DETAIL 'C'

SECTION 'B-B'

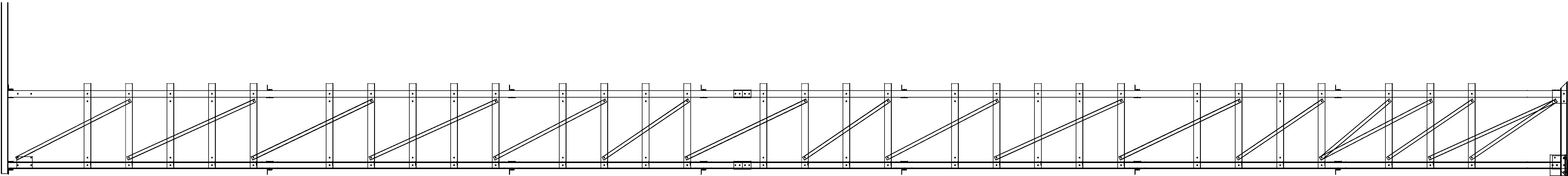


1 2 3 4 5 6 7 8 9 10 11 12 13 14 15 16 17 18 19 20 21 22 23 24 25 26 27 28 29 30 31 32 33

A  
B  
C  
D  
E  
F  
G  
H  
I  
J  
K  
►  
L  
M  
N  
O  
P  
Q  
R  
S  
T  
U  
V



1 CROSS-SECTION  
02.02 3/8"=1'-0"



2 DETAIL  
02.02 3/8"=1'-0"



BOXWORKS TECHNOLOGIES INC.  
2085 PARKWAY BLVD  
SALT LAKE CITY, UT 84119  
801-214-6100

CONTINENTAL RACK

1103 JAMESTOWN ROAD, MORGANTON, NC 28655

CLIENT

REVISIONS		DESCRIPTION	
REV	DATE		

PROJECT # : EA-1001  
DRAWN BY: BMR  
SCALE:  
DATE: 11/27/18  
PAGE: 07 14  
DESCRIPTION:

DWG NAME:  
02.02

1 2 3 4 5 6 7 8 9 10 11 12 13 14 15 16 17 18 19 20 21 22 23 24 25 26 27 28 29 30 31 32 33



	1	2	3	4	5	6	7	8	9	10	11	12	13	14	15	16	17	18	19	20	21	22	23	24	25	26	27	28	29	30	31	32	33	
A																																		
B																																		
C																																		
D																																		
E																																		
F																																		
G																																		
H																																		
I																																		
J																																		
K																																		
▶																																		
L																																		
M																																		
N																																		
O																																		
P																																		
Q																																		
R																																		
S																																		
T																																		
U																																		
V																																		
	1	2	3	4	5	6	7	8	9	10	11	12	13	14	15	16	17	18	19	20	21	22	23	24	25	26	27	28	29	30	31	32	33	

PROJECT F: EA-18001

DRAWN BY: BMR

SCALE: 11/27/18

DATE: 08 14

DESCRIPTION:

REV

DATE

DESCRIPTION

CONTINENTAL RACK

1103 JAMESTOWN ROAD; MORGANTON, NC 28655

BOXWORKS TECHNOLOGIES INC.

2065 PARKWAY BLVD.  
SALT LAKE CITY, UT 84119

801-214-6100

Box

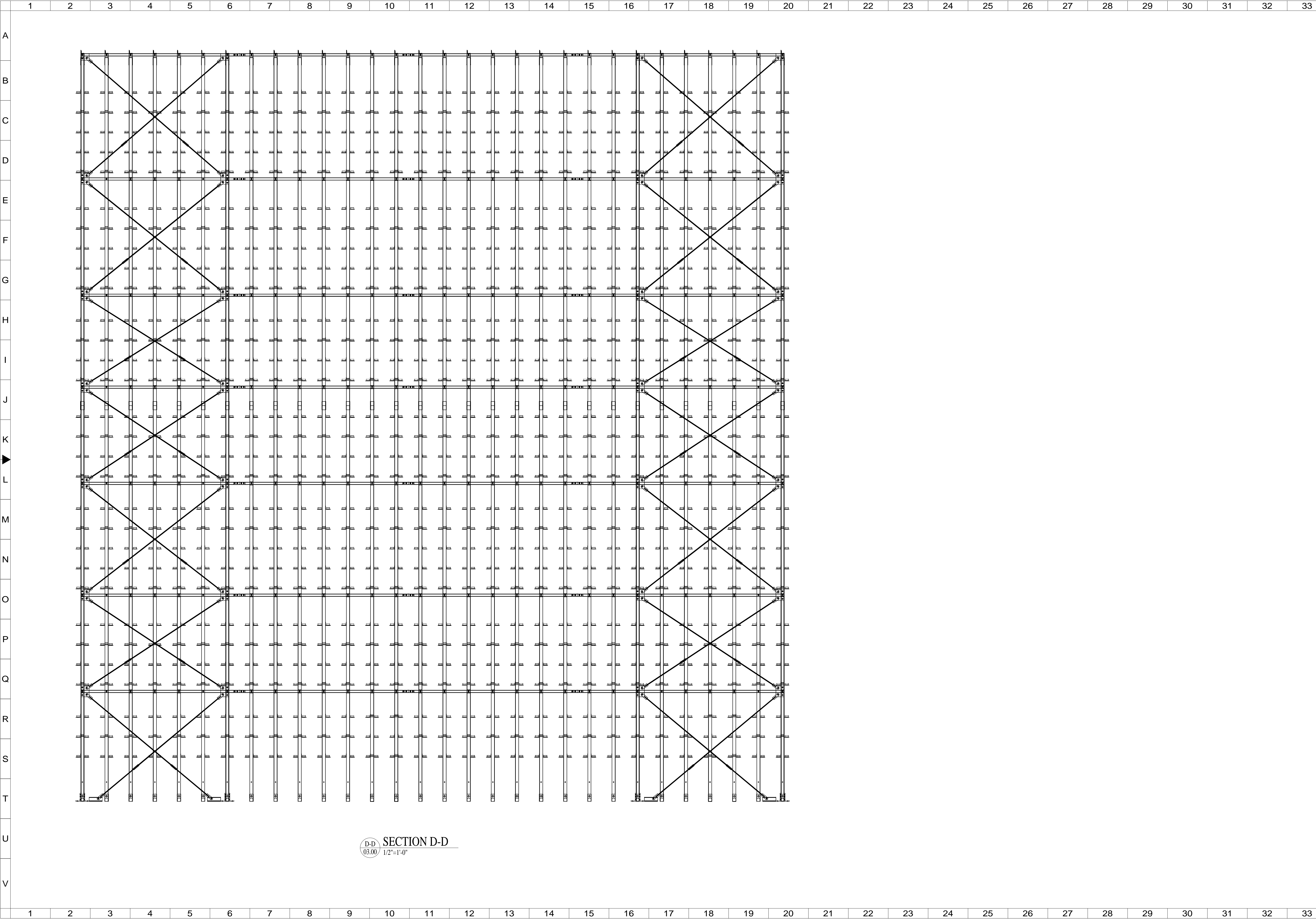
Works

Technologies Inc.









D-D  
03.00 SECTION D-D  
1/2"=1'-0"



BOXWORKS TECHNOLOGIES INC.  
2085 PARKWAY BLVD  
SALT LAKE CITY, UT 84119  
801-214-6100

CONTINENTAL RACK

1103 JAMESTOWN ROAD, MORGANTON, NC 28655

CLIENT

PROJECT

REVISIONS

DESCRIPTION

REV DATE

PROJECT # EA-1001

DRAWN BY: BMR

SCALE:

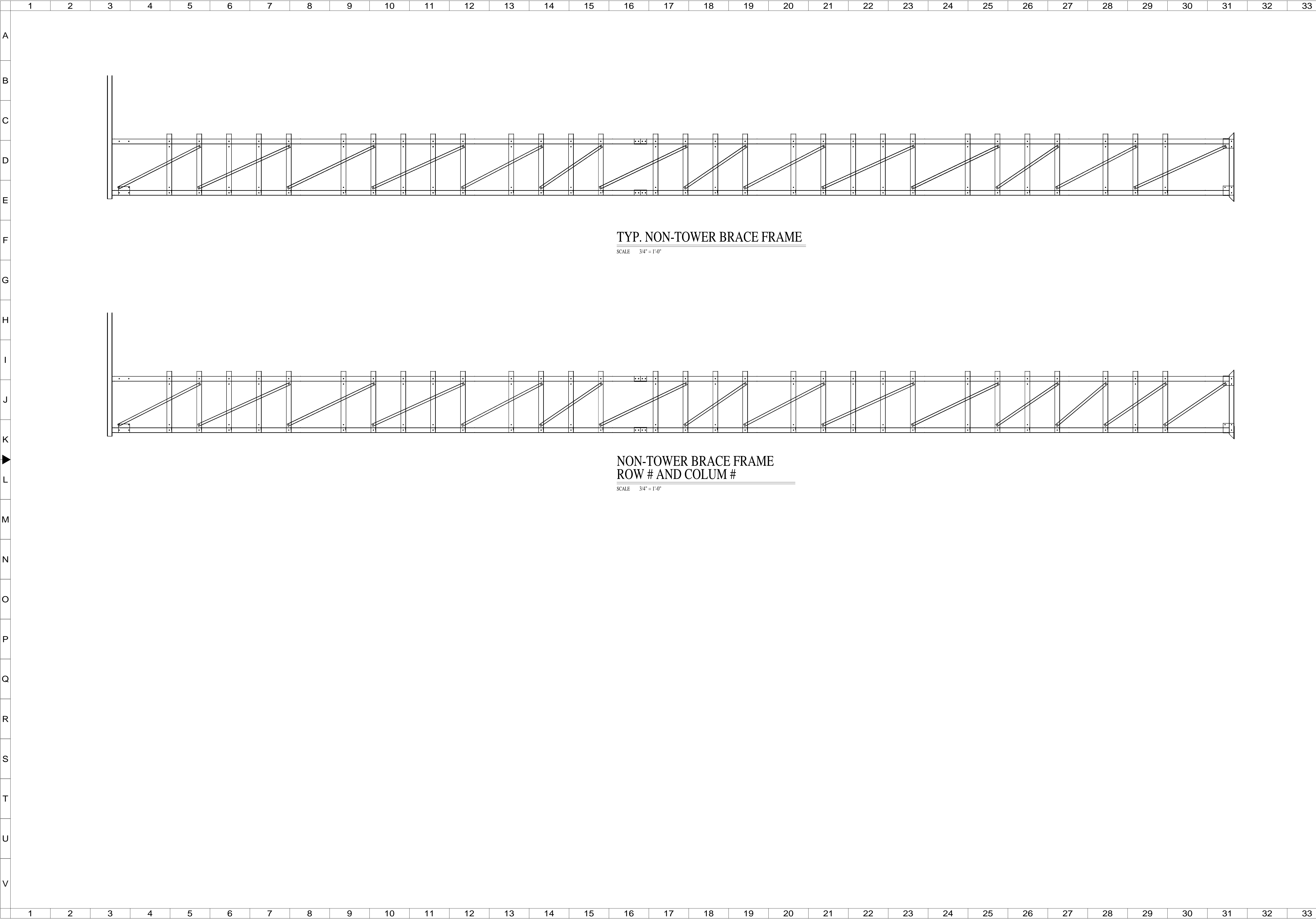
DATE: 11/27/18

PAGE: 10 14

DESCRIPTION:

DWG NAME: 03.01





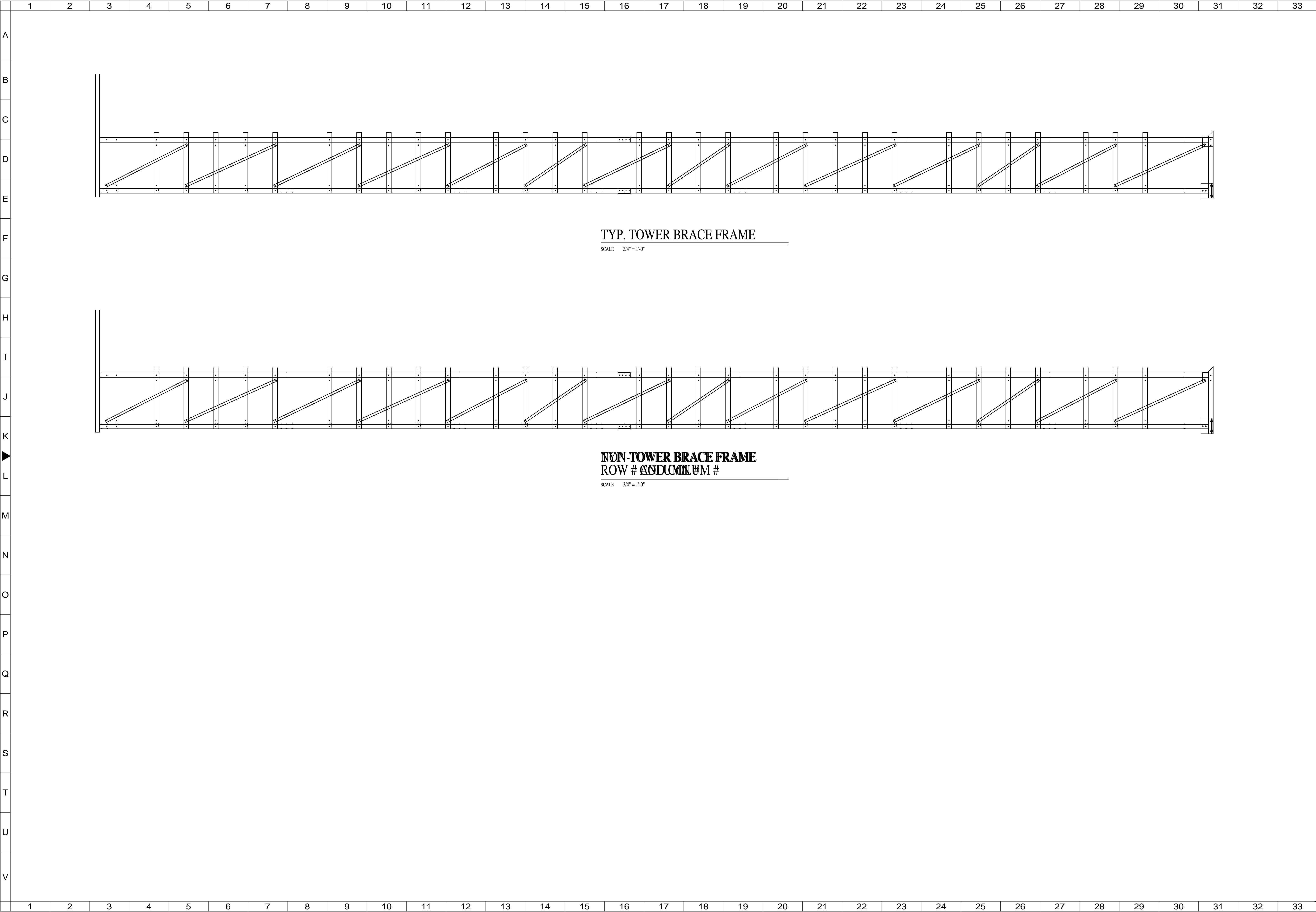
BOXWORKS TECHNOLOGIES INC.  
2065 PARKWAY BLVD  
SALT LAKE CITY, UT 84119  
801-214-6100

CONTINENTAL RACK

1103 JAMESTOWN ROAD, MORGANTON, NC 28655

REVISIONS		CLIENT	
REV	DATE	DESCRIPTION	
PROJECT #:		EA-1001	
DRAWN BY:		BMR	
SCALE:			
DATE:		11/27/18	
PAGE:		11	14
DESCRIPTION:			
DWG NAME:		04.00	





Box Works

Technologies Inc.

BOXWORKS TECHNOLOGIES INC.  
2085 PARKWAY BLVD  
SALT LAKE CITY, UT 84119  
801-214-6100

CONTINENTAL RACK

1103 JAMESTOWN ROAD, MORGANTON, NC 28655

REVISIONS

REV	DATE	DESCRIPTION

PROJECT #

EA-1001

DRAWN BY

BMR

SCALE

DATE

11/27/18

PAGE

12 14

DESCRIPTION

DWG NAME

04.01



	1	2	3	4	5	6	7	8	9	10	11	12	13	14	15	16	17	18	19	20	21	22	23	24	25	26	27	28	29	30	31	32	33	
A																																		
B																																		
C																																		
D																																		
E																																		
F																																		
G																																		
H																																		
I																																		
J																																		
K																																		
▶																																		
L																																		
M																																		
N																																		
O																																		
P																																		
Q																																		
R																																		
S																																		
T																																		
U																																		
V																																		
	1	2	3	4	5	6	7	8	9	10	11	12	13	14	15	16	17	18	19	20	21	22	23	24	25	26	27	28	29	30	31	32	33	



