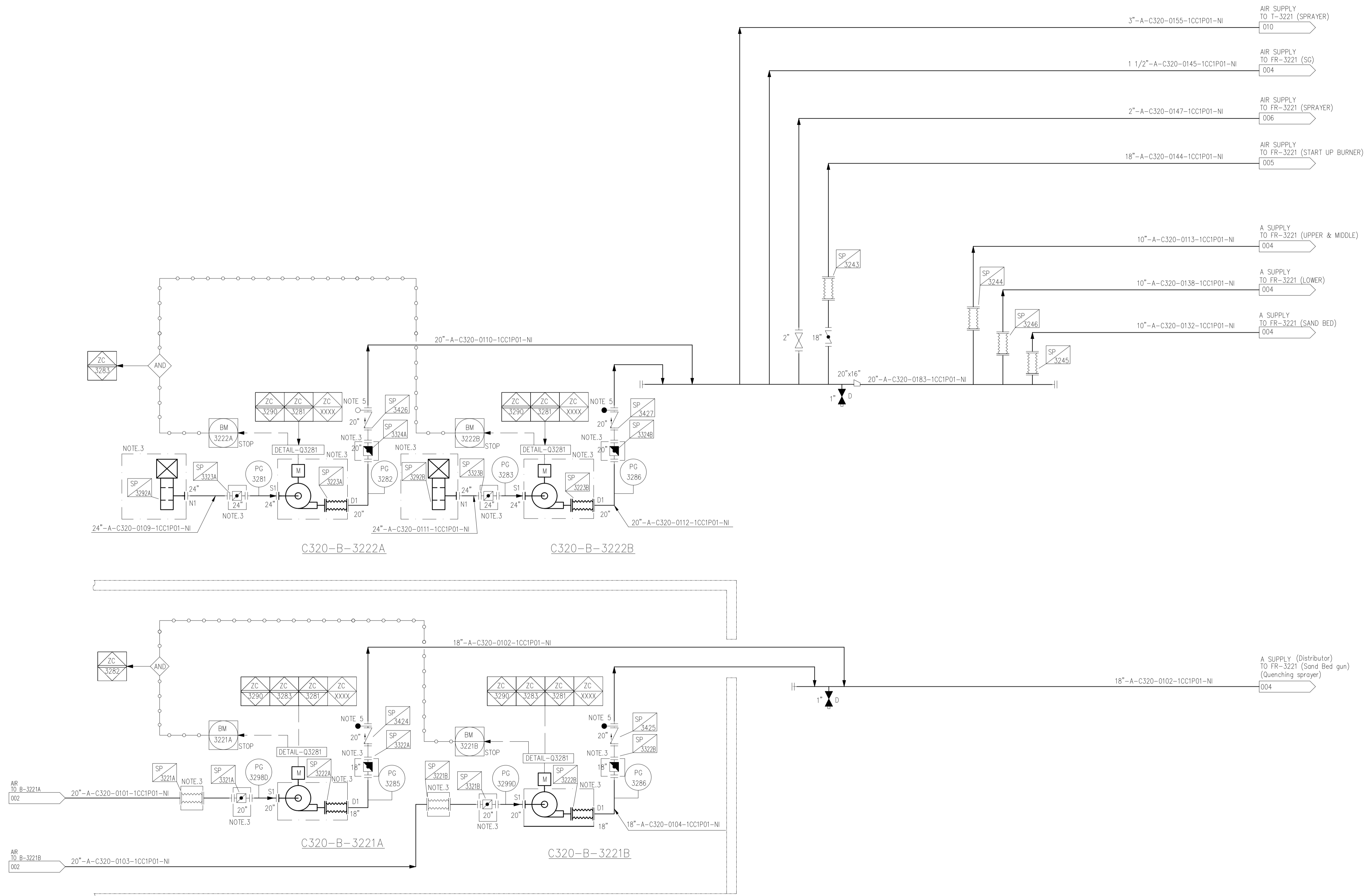


1. ORIFICE FLOW METER SHALL BE LOCATED AS FOLLOWS;  
DOWNSTREAM FROM FLOW DISTURBANCE : MIN. 14D  
UPSTREAM FROM FLOW DISTURBANCE : MIN. 3.5D
2. ALL INDICATIONS AND ANNUNCIATORS SHALL BE DISPLAYED ON ONLY DCS BY COMMUNICATION WITH PLC.  
CONTROLLERS EQUIPPED FOR LOCAL PLC SHALL BE OPERATED BY ONLY DCS, COMMUNICATED WITH PLC.
3. SUPPLIED BY BLOWER VENDOR AS UNIT
4. TAG NO. TSP01 (SPADE), TRS01 (RING SPACER)
5. TAG NO. TSP02 (SPADE), TRS02 (RING SPACER)



**C320-B-3221A/B**

No.1 COMBUSTION AIR FAN  
 RATED FLOW : 12,000 Nm<sup>3</sup>/h  
 DIFFERENTIAL PRESSURE : 3,200 mmH2O-g  
 INSULATION : AI  
 MATERIAL : CARBON STEEL (CASING)  
 : CARBON STEEL (IMPELLER)  
 BHP (RATED) : 200 kW

**C320-B-3222A/B**

No.2 COMBUSTION AIR FAN  
 RATED FLOW : 15,000 Nm<sup>3</sup>/h  
 DIFFERENTIAL PRESSURE : 450 mmH2O-g  
 INSULATION : AI  
 CASING MATERIAL : CARBON STEEL (CASING)  
 : CARBON STEEL (IMPELLER)  
 BHP (RATED) : 45 kW