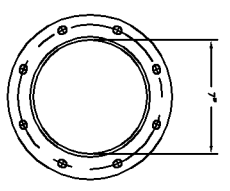
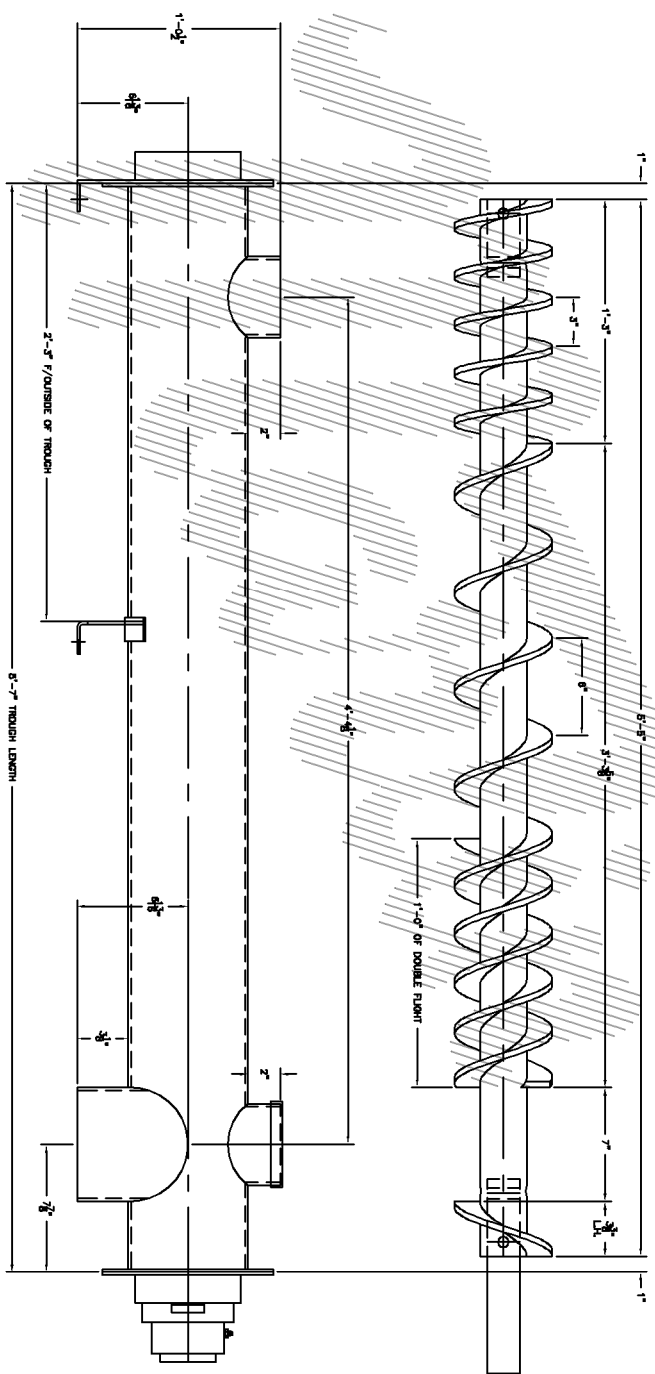


FOR APPROVAL ONLY
 MANUFACTURING IS ON HOLD
 ISSUE DATE: _____
 APPROVED AS SUBMITTED
 APPROVED AS NOTED
 RESUBMIT
 APPROVED BY: _____
 DATE: _____

- NOTES:
 1. FOR SAFETY STOKER LOCATIONS, REFER TO CEAM SAFETY LABELS PLACEMENT GUIDE #SC-2.
 2. (1) LOT OF STANDARD SHOP COAT OF GRAY ENAMEL PAINT.
 3. SHOP TO ASSEMBLE CONVEYOR.



| BILL OF MATERIAL | | | | DESCRIPTION |
|------------------|-----|--------------|------|---|
| ITEM # | QTY | PART NO. | MATL | |
| A | ONE | SC-6 | CS | SCREW CONVEYOR ASSEMBLY |
| A1 | 1 | 6CHT7 | CS | 6" X 5'-7" LG. CONVEYOR TO CONSIST OF: |
| A1.1 | 1 | 6CIE-RD-SP | CS | 6" X 3/16" THK. X 5'-7" LG. SOLID TUBULAR TROUGH FITTED WITH: |
| A1.2 | 1 | 6CIE-INS-P | CS | 6" X 3/16" THK. X 5' ID. ROUND INLET |
| A1.3 | 1 | 6TSD7-RD-SP | CS | 6" X 3/16" THK. X 5' ID. ROUND INSPECTION PORT WITH 90° KICER RUBBER CAP |
| A2 | 1 | 6TS-SP | CS | 6" MTO TROUGH SADDLE |
| A3 | 1 | 6TEFAEB-P-SP | CS | 6" X 2" TROUGH END WINDOW STD DROP |
| A4 | 1 | 6TE4BB-P | CS | 6" X 2" TROUGH END W/O FEET |
| A5 | 1 | TEB4BR | | 2" FLANGE ROLLER BEARING |
| A6 | 1 | SEAL | | 2" CINCH SEAL PN: 0FSD75602A |
| A7 | 1 | SEAL | | 2" SPLIT CINCH SEAL PN: F68-724-462-2A |
| A8 | 1 | CE4B-W | 1045 | 2" DIA. X 12" LONG END SHAFT |
| A9 | 1 | AR | CS | LATEX GASKET FOR TROUGH CONNECTION |
| A10 | 1 | 6S424R-AR4 | CS | 6" X 2" X VARIABLE PITCH X 5'-5" LG. RIGHT HAND AR400 SCREW C/W B.S. ON 2 1/2" SCH. 80 PIPE WITH 2 BOLT I COUPLINGS. |
| A11 | 4 | OCB4 | CS | 5/8" Ø COUPLING BOLT W/ LOCKNUTS |

THIS DRAWING IN DESIGN IS THE PROPERTY OF **Motion** SYMPOLECT & SEALING, AND MUST BE KEPT CONFIDENTIAL AND NOT MADE PUBLIC OR COPIED UNLESS SO AUTHORIZED BY THEM AND IS SUBJECT TO RETURN ON DEMAND.

| REVISION | NO. | BY | DATE |
|----------|-----|----|------|
| | | | |
| | | | |
| | | | |
| | | | |
| | | | |

Motion - CONVEYOR DIVISION
 3303 CHURCH STREET
 SCOTTDAL, GA 30079
 PH: (404) 292-8744 (FAX 404-292-7771)

CEAM

ALL COSTS SHOWN ARE NET UNLESS NOTED OTHERWISE
 PER CEAM STANDARDS ACCORDING TO SPEC
 ALL DIMENSIONS TO CENTER UNLESS NOTED OTHERWISE
 DIMENSIONS IN RED ARE CEAM STANDARDS. ALL OTHERS
 ARE CUSTOMER SPECIFICATIONS.
 UNLESS OTHERWISE SPECIFIED:
 ALL DIMENSIONS ARE IN INCHES
 FRACTIONS: 1/8", 1/4", 3/8", 1/2", 5/8", 3/4", 7/8"
 DECIMALS: .0625, .125, .1875, .25, .3125, .375, .4375, .5, .5625, .625, .6875, .75, .8125, .875, .9375, 1.0
 TOLERANCES: UNLESS OTHERWISE SPECIFIED:
 FRACTIONS: ± 1/16" UNLESS OTHERWISE SPECIFIED
 DECIMALS: ± .005" UNLESS OTHERWISE SPECIFIED
 HOLE SIZES: ± .005" UNLESS OTHERWISE SPECIFIED
 UNLESS OTHERWISE SPECIFIED

DESIGNER: MNS
 SCALE: 1/4" = 1'-0"
 DRAWN: AMH
 APPROVED: [Signature]

MOTION INDUSTRIES
 PO BOX 9827
 GREENVILLE, SC

6' X 5'-7" LONG
 ASSEMBLED CONVEYOR

DATE: 11-03-16
 PRC NUMBER: 02-2810057