



Build Your AutoCAD® IQ! **Tailoring and Managing Workspaces**

Presenters: Christina Davis and Shawn Niles

Autodesk Product Support Specialists

Before We Get Started...

- Feel free to leave questions in the questions/chat window
 - Will be answered as time allows
- We will have Q&A after the presentation as well
- Check out our Landing Page
 - Check back frequently for added webinars
 - Visit <http://tinyurl.com/ozkvfq4>
 - Watch the AutoCAD IQ YouTube Playlist: <http://tinyurl.com/mab39s7>

Autodesk Knowledge Network: New Articles

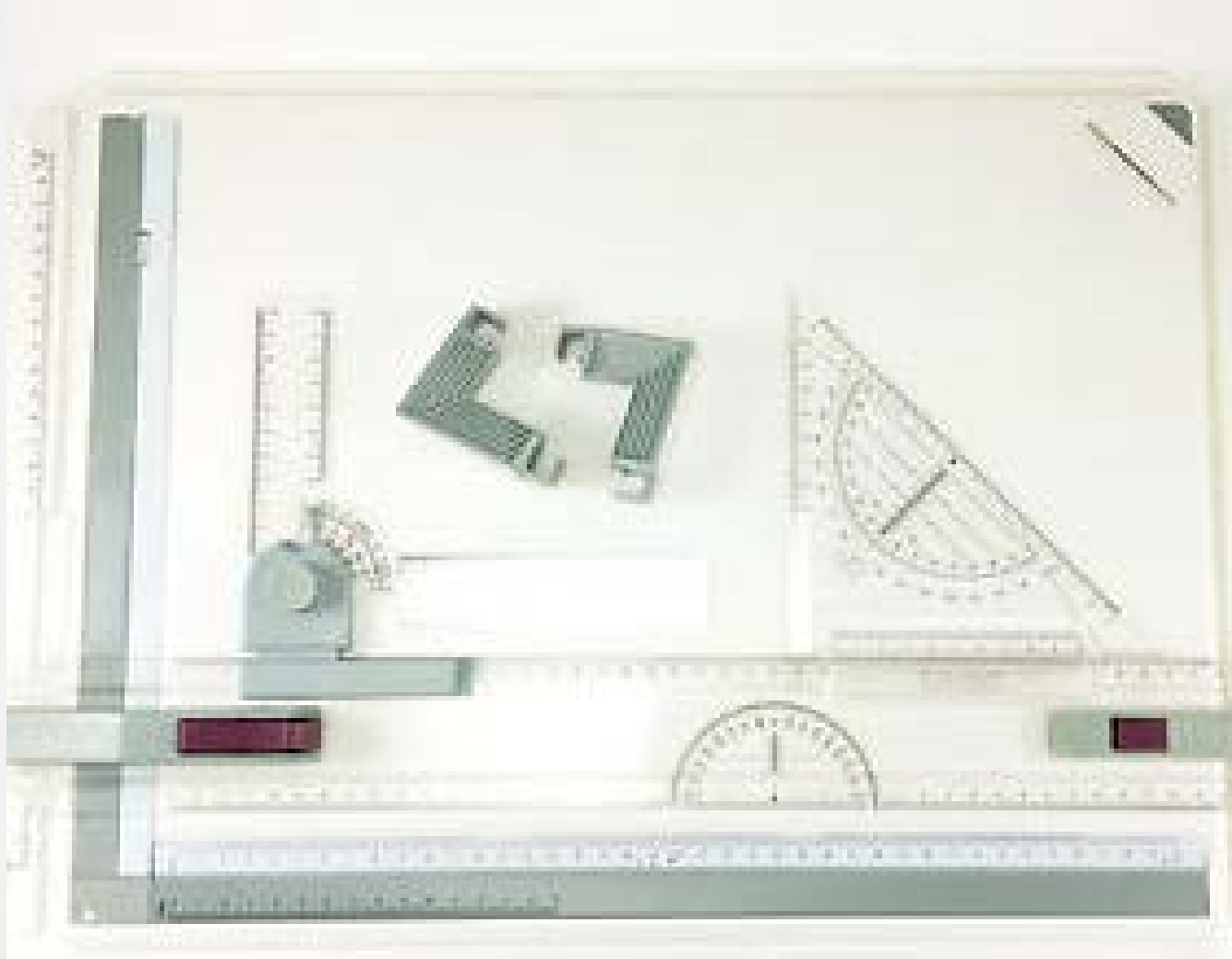
<http://knowledge.autodesk.com>

- [Autodesk® AutoCAD® and AutoCad LT® 2014 and 2015 Geolocation Online Map Hotfix](#)
- [Mac OSX 10.10 \(Yosemite\) compatibility with AutoCAD for Mac and AutoCAD LT for Mac](#)
- [AutoCAD Architecture + AutoCAD MEP + Microsoft Update = Crash - Up and Ready](#)
 - [Microsoft Security Bulletin MS14-056 – Critical](#)
- [AutoCAD crashes after installing Windows security update](#)
- Quick Links: Hot Fixes, Service Packs and downloads
 - [AutoCAD](#)
 - [AutoCAD LT](#)

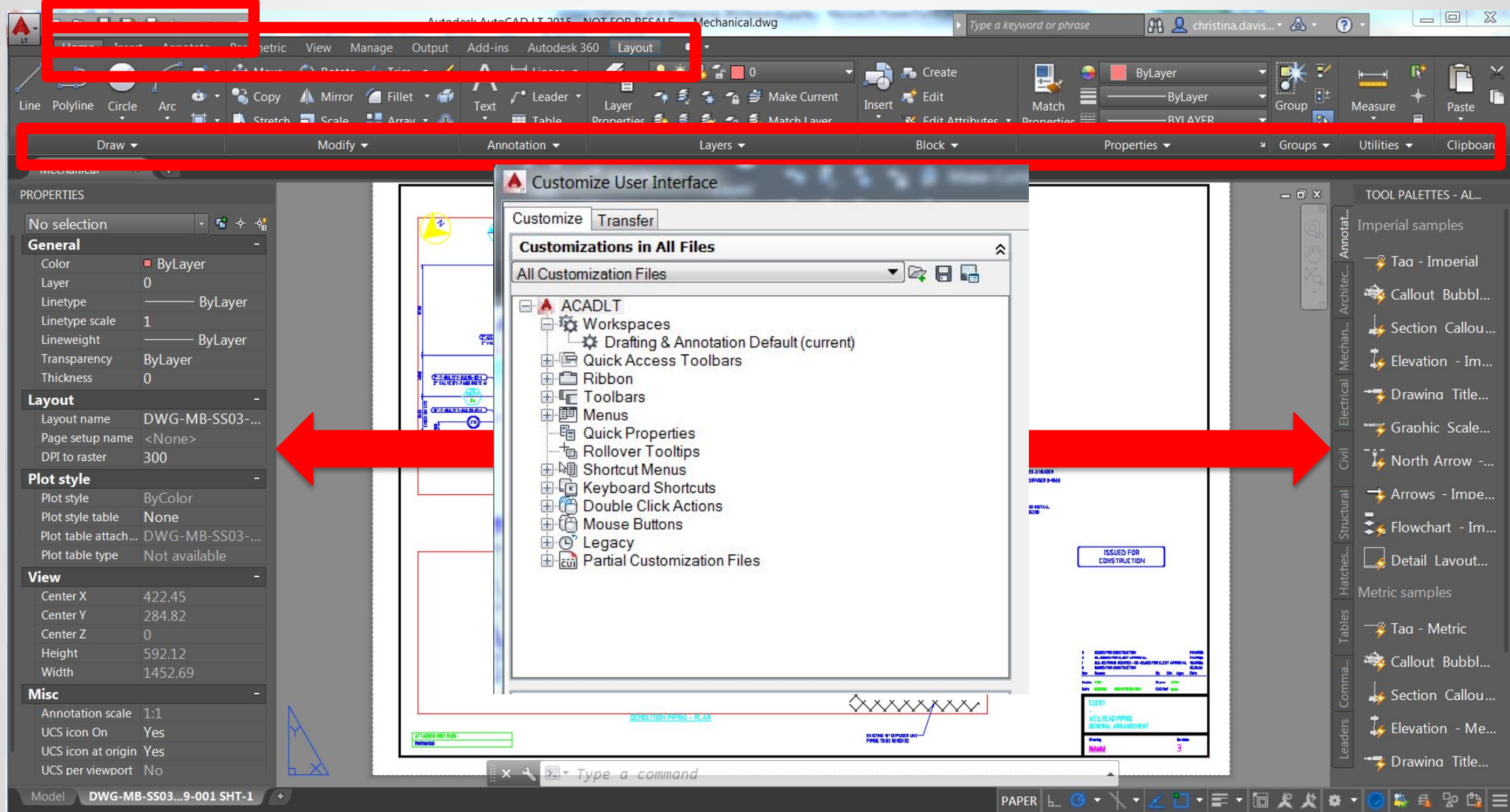
Looking at the Agenda

- About Workspaces
- Managing Workspaces
- Creating Custom Workspaces
- Importing Workspaces
 - Sharing with others
 - AutoCAD Classic

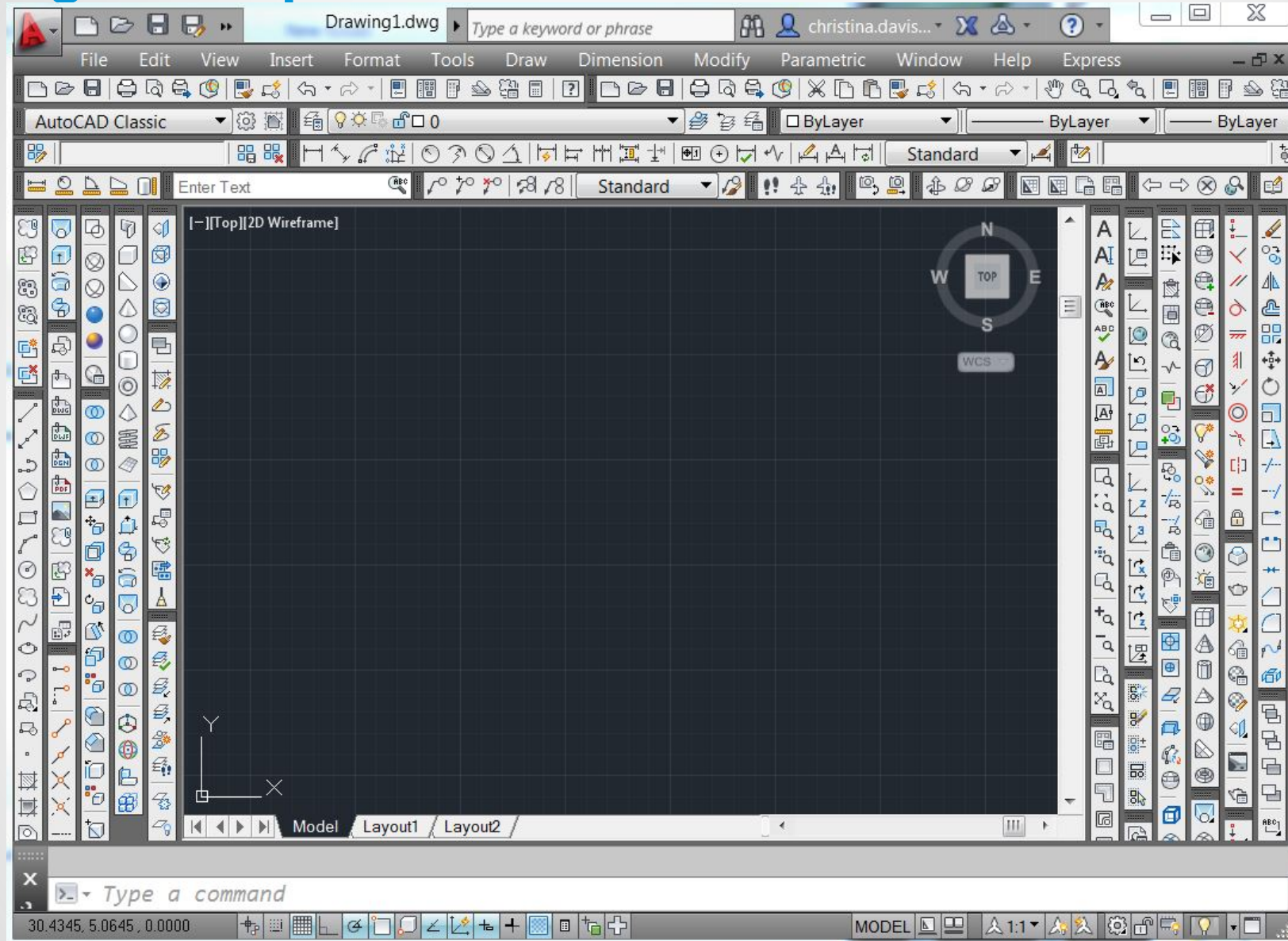
About Workspaces



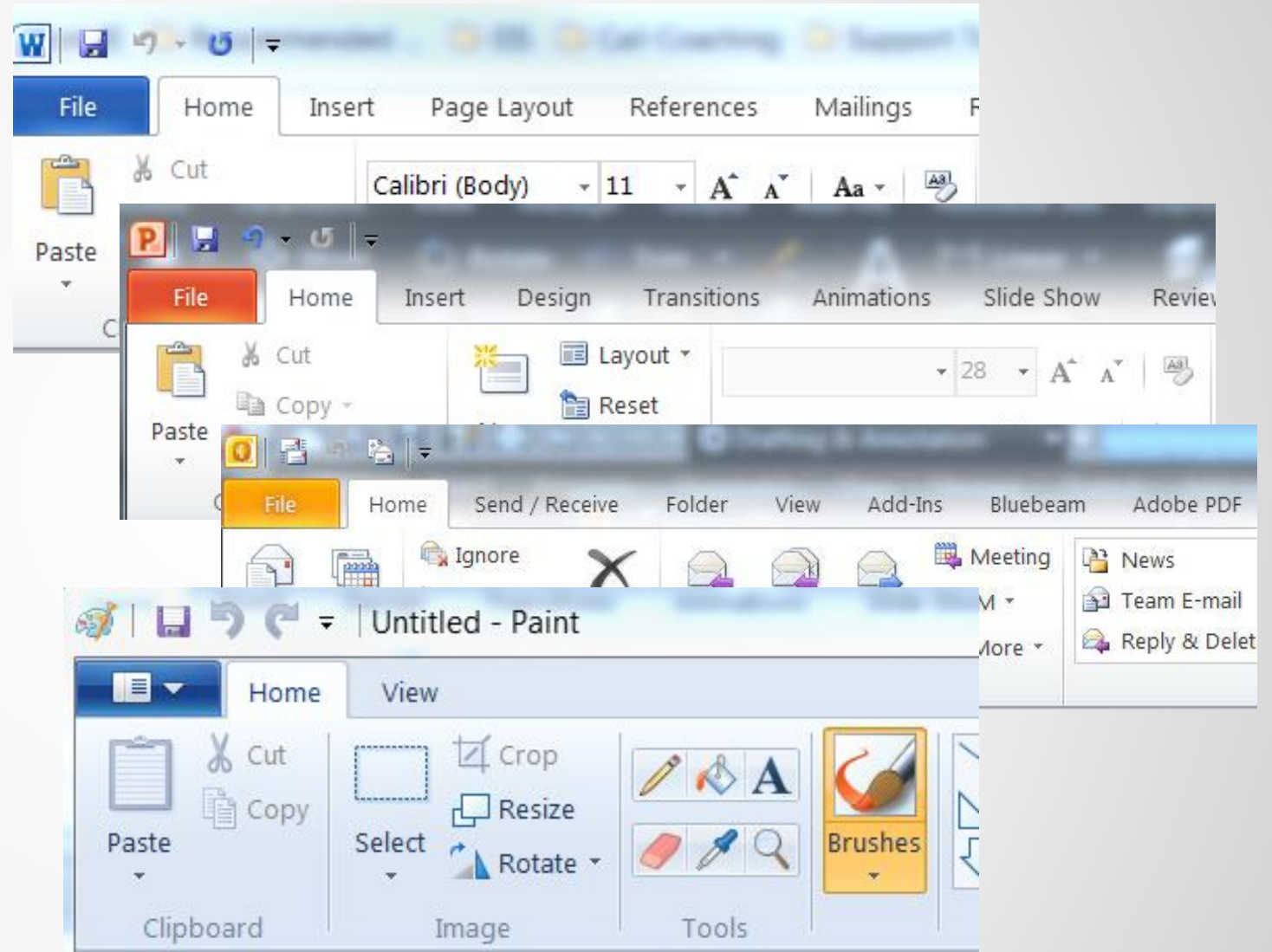
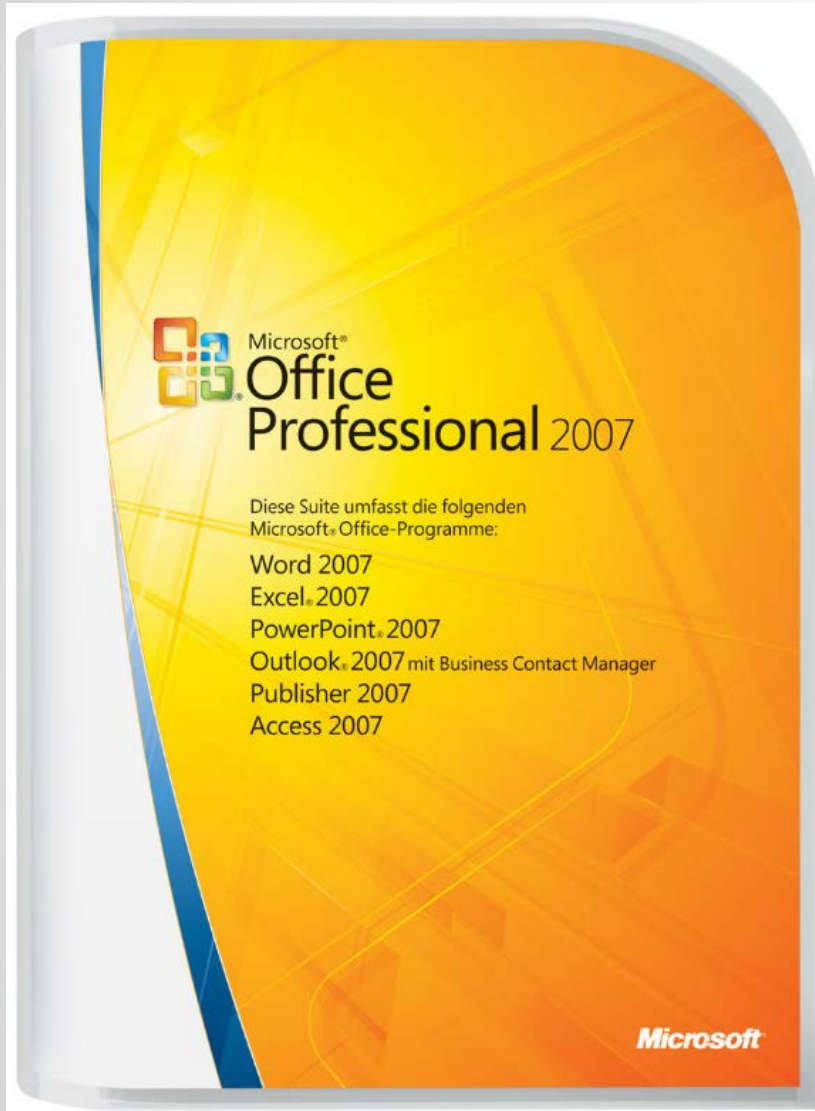
About Workspaces



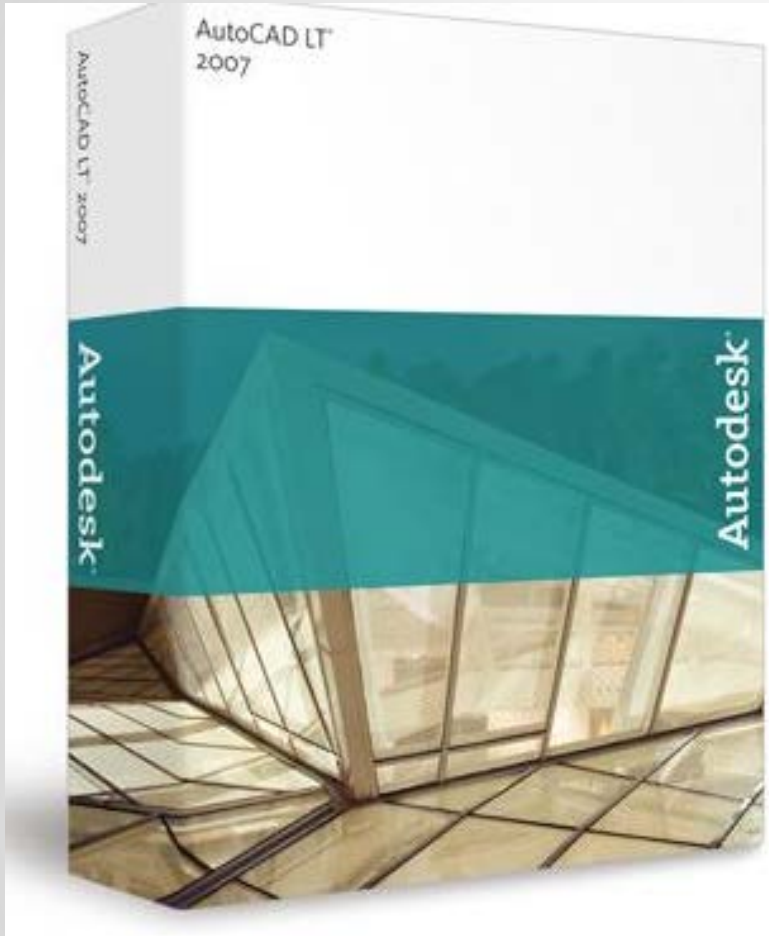
Managing Workspaces



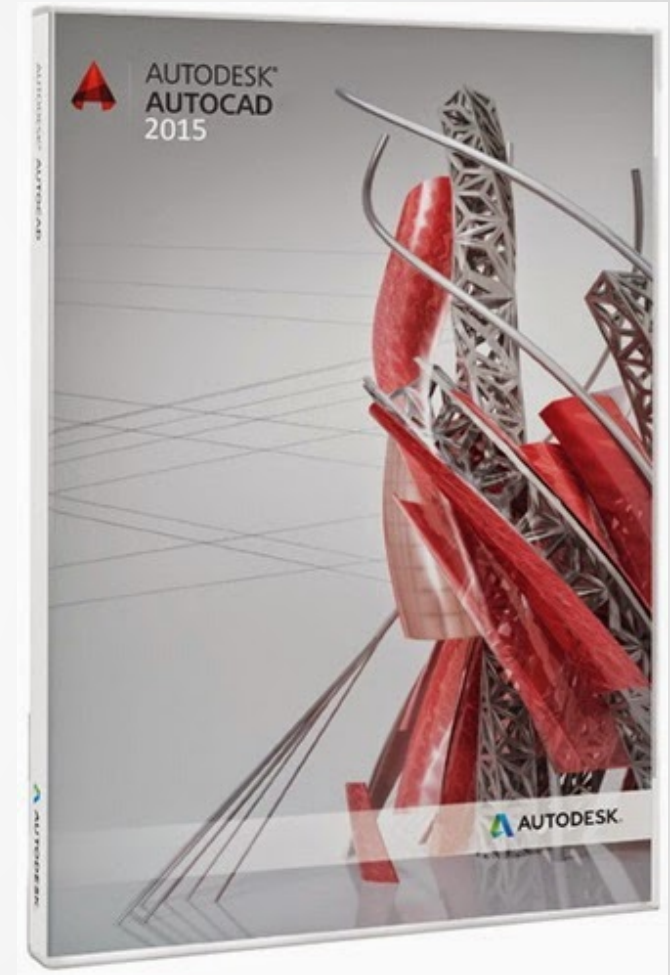
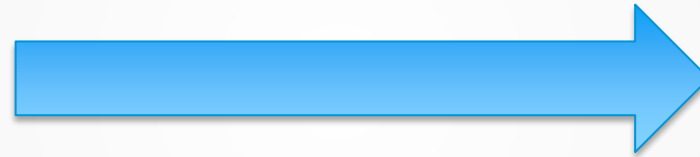
Importing Workspaces (AutoCAD Classic)



Importing Workspaces (AutoCAD Classic)



9 Releases



Importing Workspaces (AutoCAD Classic)



Additional Resources

- [How to change the Workspace in AutoCAD 2015](#)
- [Workspaces not saved](#)
- [Workspaces in Main CUI not available on Workspaces toolbar](#)
- [Error when attempting to synchronize workspace](#)
- [Default workspace not loaded at startup](#)

Questions?

Coming Attractions:

Session	Date
Getting Started with the Sheet Set Manager (Plotting)	November 20, 2014
BREAK: Thanksgiving and Autodesk University 2014	
Back to Basics - Object Selection	December 11, 2014
Back to Basics - Drawing the Line	December 18, 2014

Visit <http://tinyurl.com/ozkvfq4> to Register
Session Q&A Feedback: <http://tinyurl.com/mvedtn6>
The link will also be provided in a follow-up email



Autodesk is a registered trademark of Autodesk, Inc., and/or its subsidiaries and/or affiliates in the USA and/or other countries. All other brand names, product names, or trademarks belong to their respective holders. Autodesk reserves the right to alter product and services offerings, and specifications and pricing at any time without notice, and is not responsible for typographical or graphical errors that may appear in this document.