

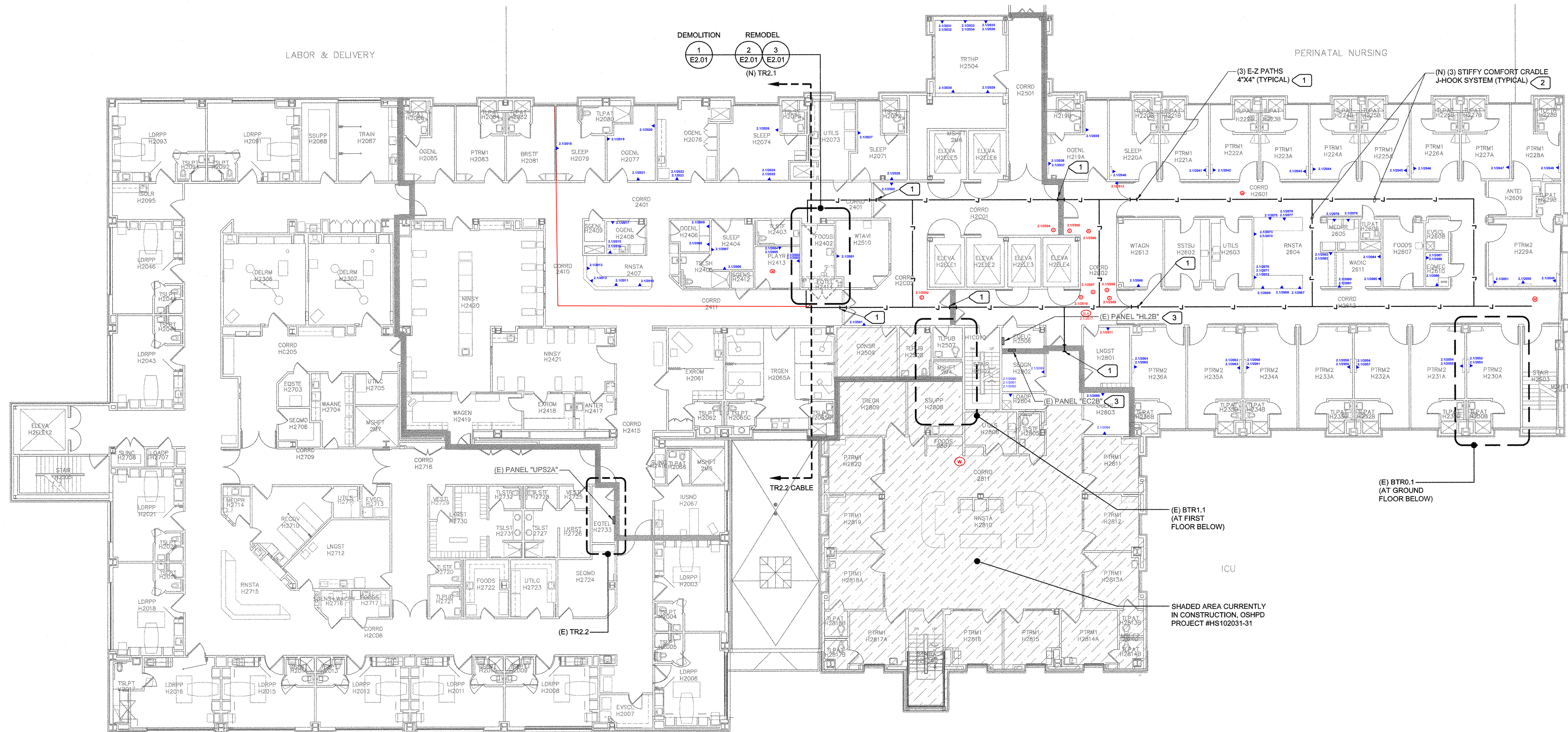


IF THIS SHEET IS NOT 30"x42", IT IS  
A REDUCED PRINT - SCALE ACCORDINGLY



National Facilities Services  
Post Office Box 12916  
Oakland, California 94604

Revisions				
No.	Revisions	By	Date	Appr.
1	OSHPD COMMENTS BACKCHECK #001 OSHPD COMMENTS	JJV	11/12/14	
2	OSHPD COMMENTS BACKCHECK #002 DATED: OCTOBER 22, 2014	JJV	01/23/15	



1 OVERALL SECOND FLOOR PLAN - ELECTRICAL  
E1.02 SCALE: 3/32" = 1'-0"

#### NUMBERED NOTES

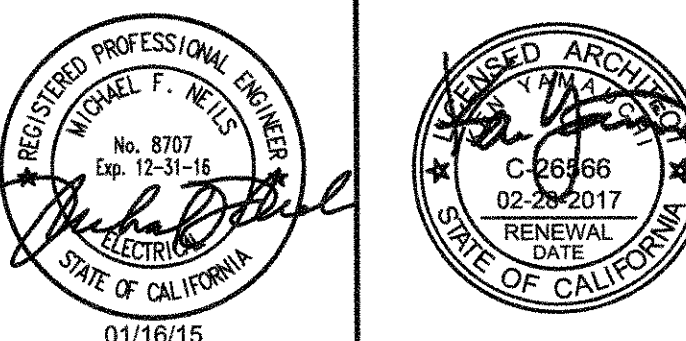
- 1 PROVIDE NEW E2 PATH 4" X 4" X 14". (2) COLOR BLUE FOR KAISER I.T. ON BOTTOM ROW, (1) COLOR WHITE FOR LOW VOLTAGE ON TOP ROW.
- 2 SEE "STIFFY CRADLE DETAIL" ON SHEET "E4.02" FOR ADDITIONAL REQUIREMENTS.
- 3 FIELD VERIFY LOCATION AND DOCUMENT ON AS-BUILTS.

**M. NEILS**  
ENGINEERING, INC.  
Electrical Engineers | Lighting Designers  
100 Howe Ave., Suite 235N  
Sacramento, CA 95825-8217  
www.mneilsengineering.com  
Tel: (916) 923-4400 Fax: (916) 923-4410  
PROJECT #: 13311.21

OFFICE OF STATEWIDE HEALTH PLANNING AND  
DEVELOPMENT FACILITIES DEVELOPMENT DIVISION

OSHPD # S141468-34-00

REVIEWED IN ACCORDANCE WITH  
THE REQUIREMENTS OF T24, CCR  
**APPROVED**  
MAR 20 2015  
Office of Statewide Health  
Planning & Development  
FACILITIES DEVELOPMENT DIVISION



**HY** HIBSER YAMAUCHI  
ARCHITECTS, INC.  
4602 2nd Street, Suite 3  
Davis, CA 95618  
530.758.1270 tel | 530.758.4789 fax

HY ARCHITECTS JOB NUMBER 3893.000

Facility  
SO. SACRAMENTO MEDICAL CENTER  
6600 BRUCEVILLE ROAD  
SACRAMENTO, CA 95823

Project  
KNPS - VOICE CN6001 SSC  
HOSPITAL NORTH

Sheet Title  
OVERALL SECOND FLOOR PLAN -  
ELECTRICAL

Fac. No.: CN60 Bldg. No.: 01 Floor Lev.: Section: 00

Scale: AS NOTED KP Proj. No.: 160-737-70

Drawn By: WIP Permit No.: Sheet

Checked By: JJV

Issue Date: 11/12/2014

E1.02

of Sheets