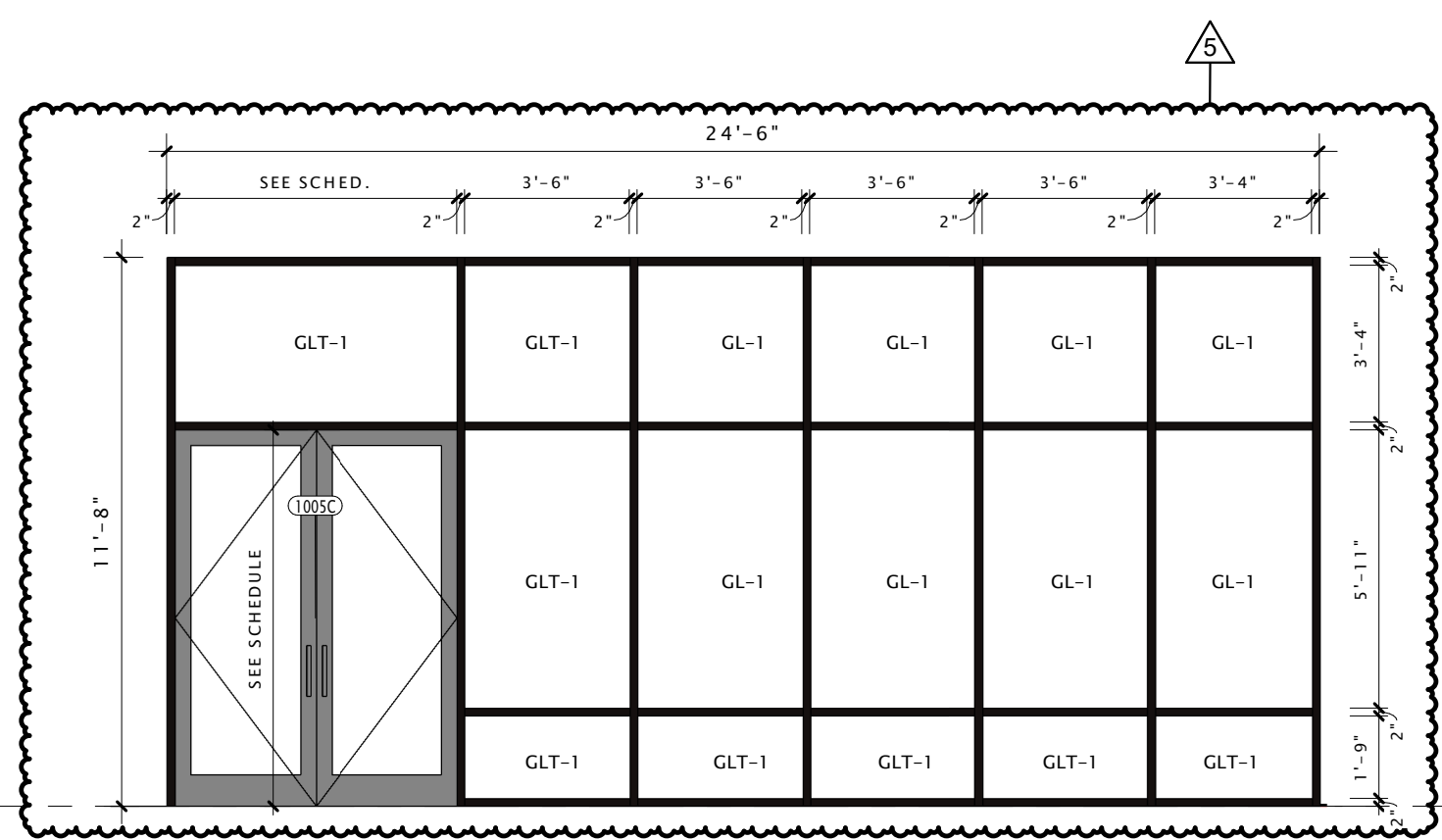
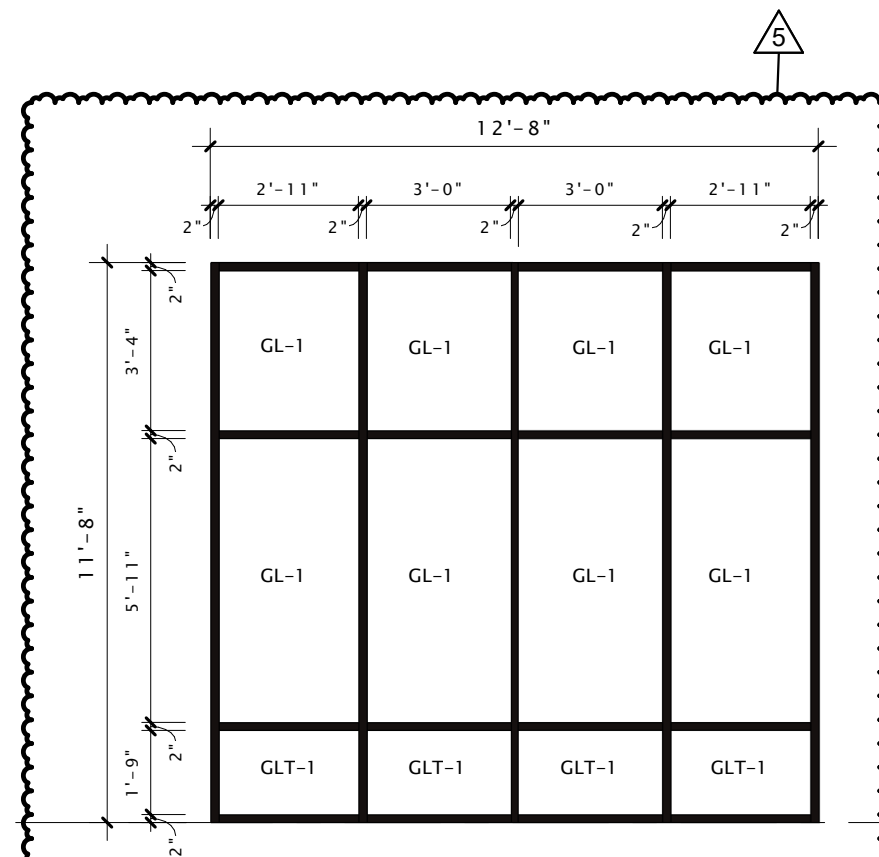


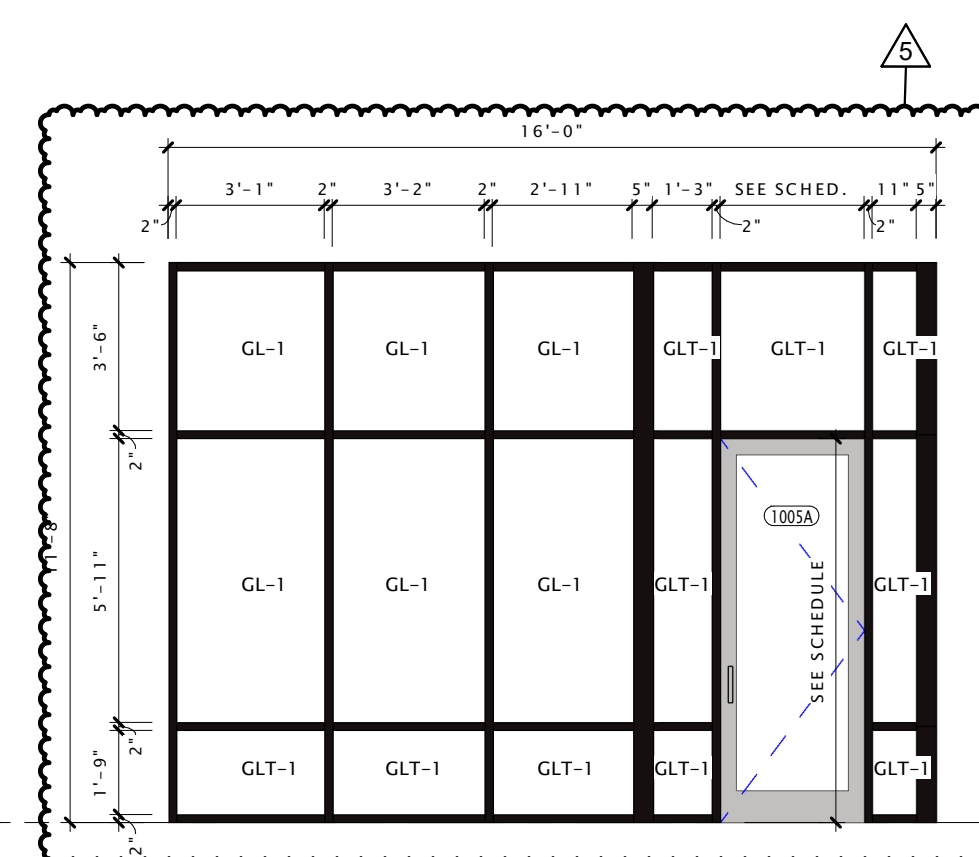
1 STOREFRONT ELEVATION - WEST RESTAURANT
1/4" = 1'-0"



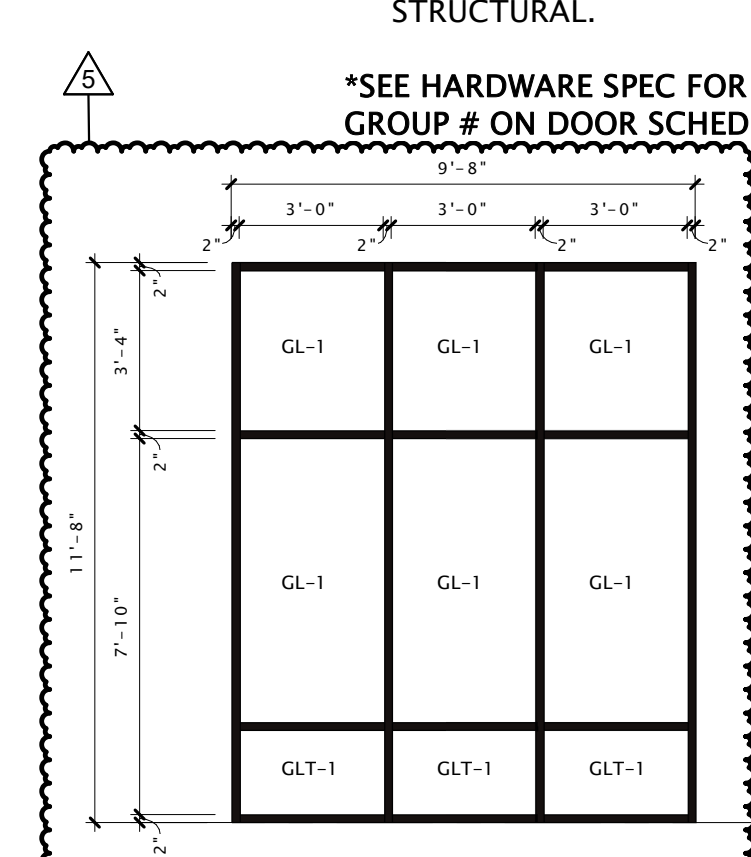
2 STOREFRONT ELEVATION - FACING
1/4" = 1'-0"



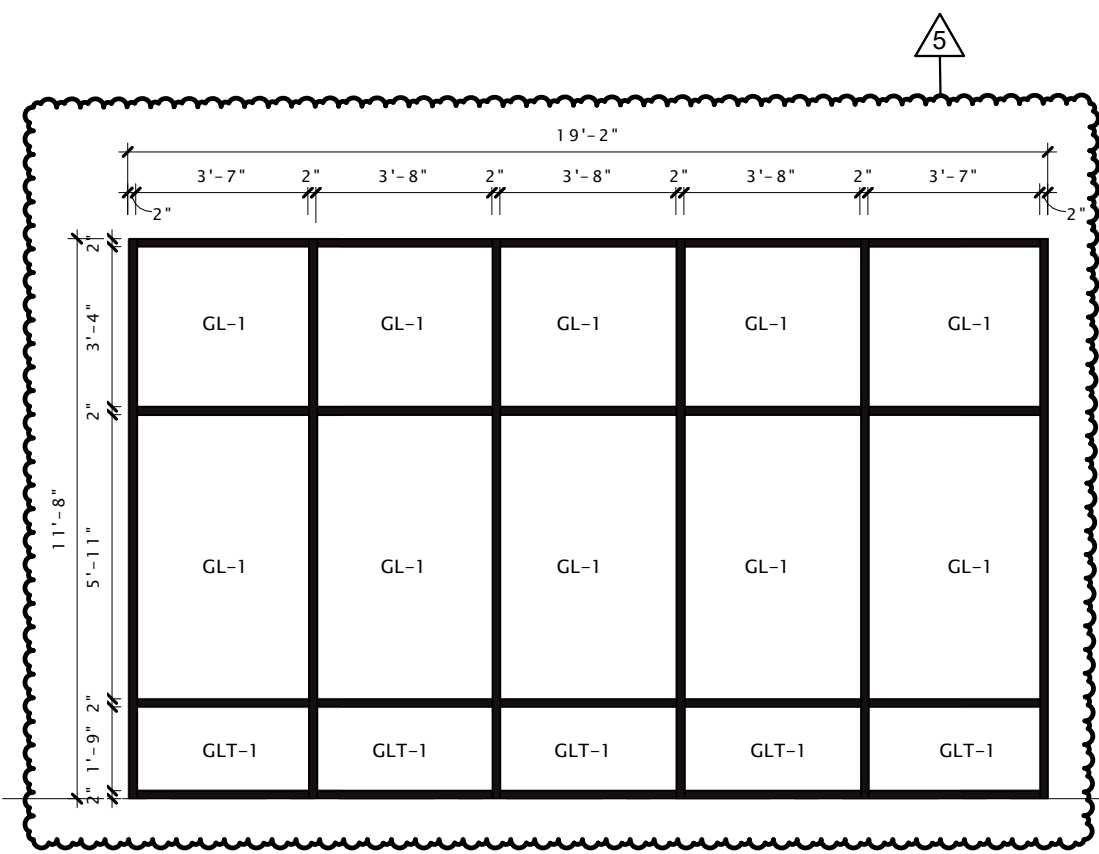
3 STOREFRONT ELEVATION - WEST RESTAURANT
1/4" = 1'-0"



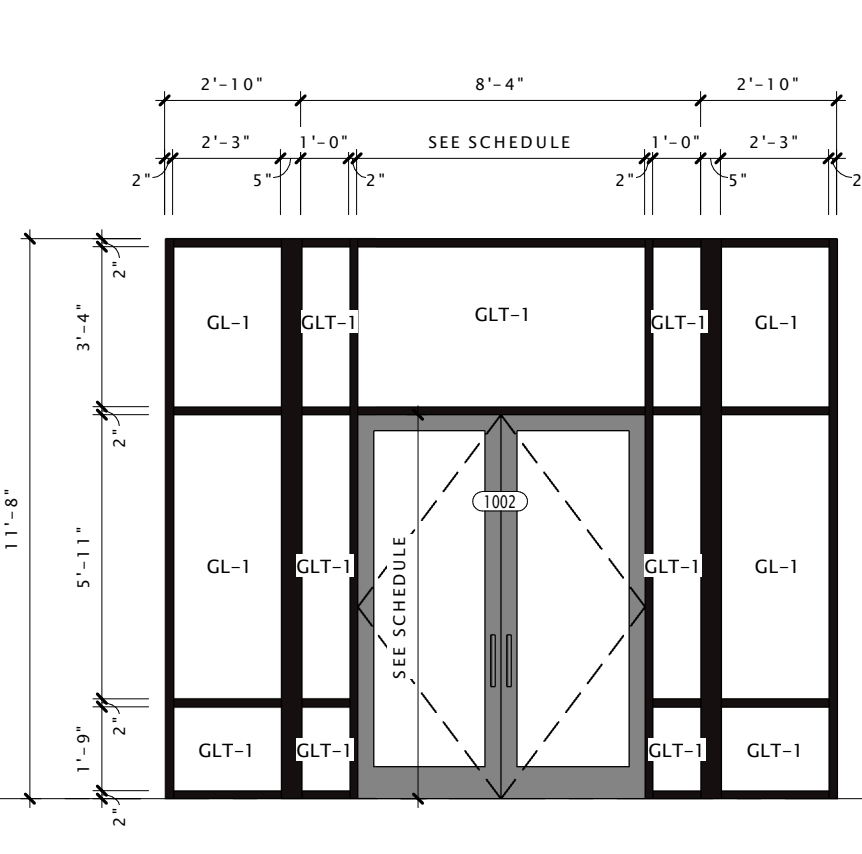
4 STOREFRONT ELEVATION - FACING E. WASH
1/4" = 1'-0"



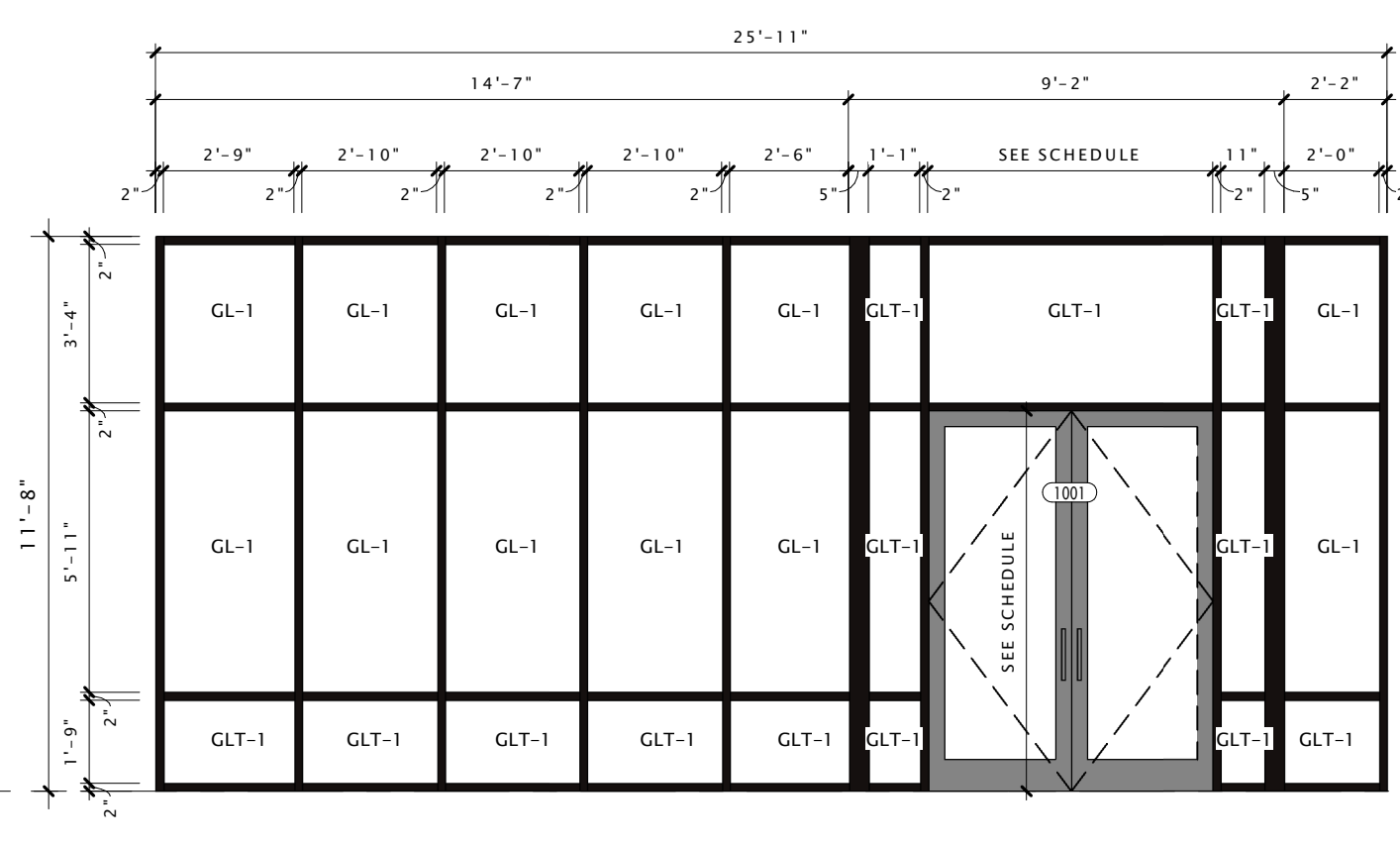
5 STOREFRONT ELEVATION - FACING E. WASH
1/4" = 1'-0"



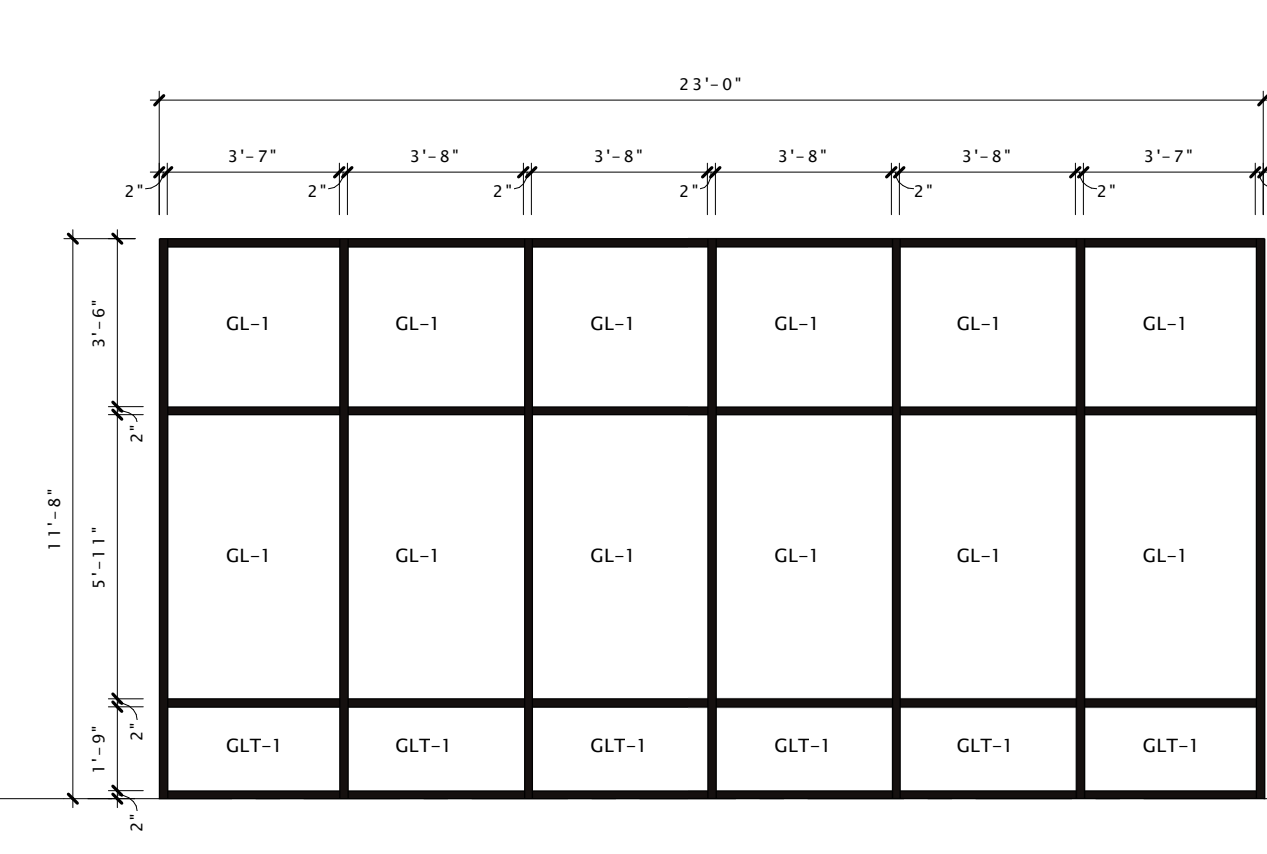
6 STOREFRONT ELEVATION - FACING E. WASH
1/4" = 1'-0"



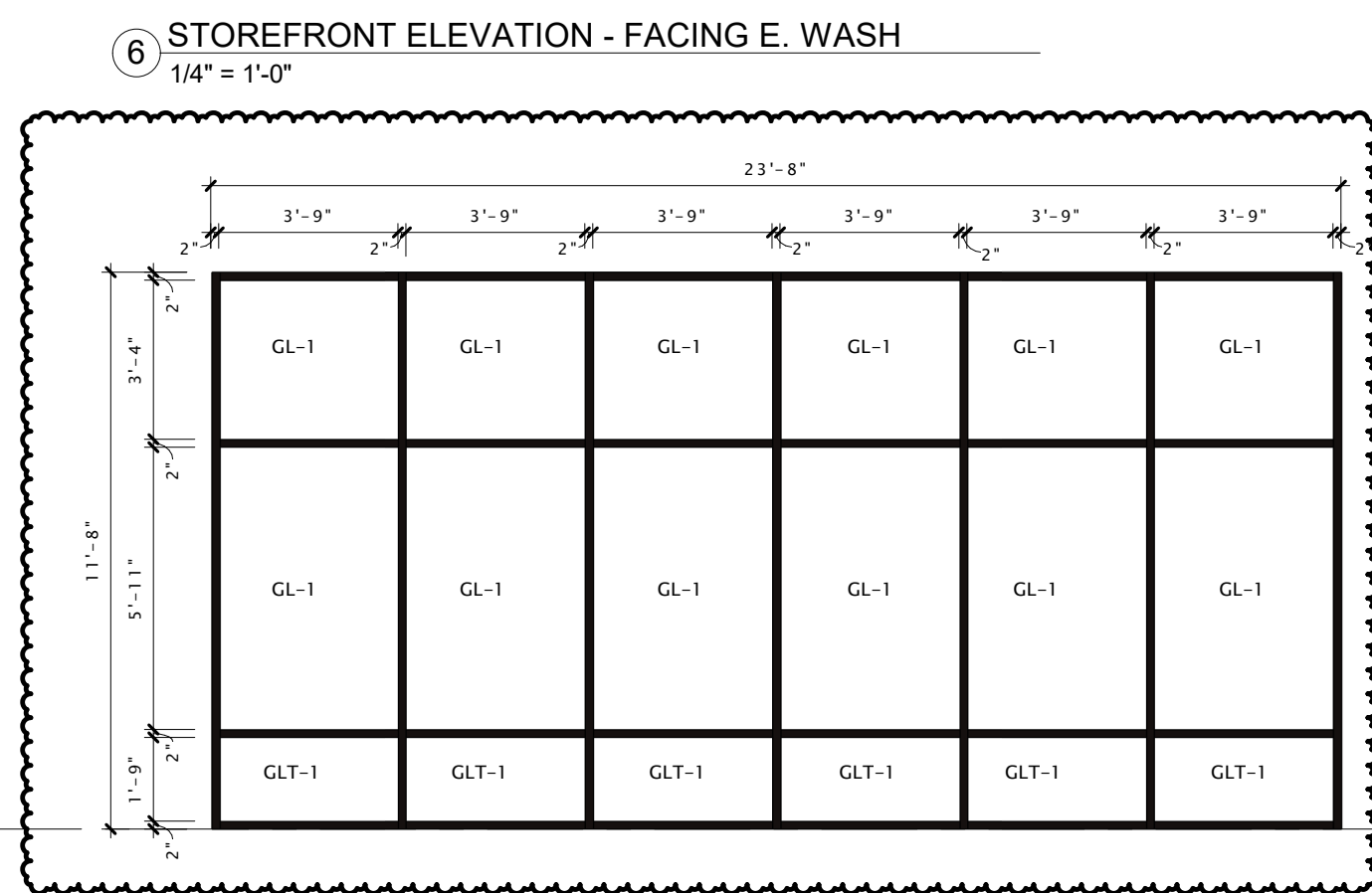
8 STOREFRONT ELEVATION - FACING E. WASH
1/4" = 1'-0"



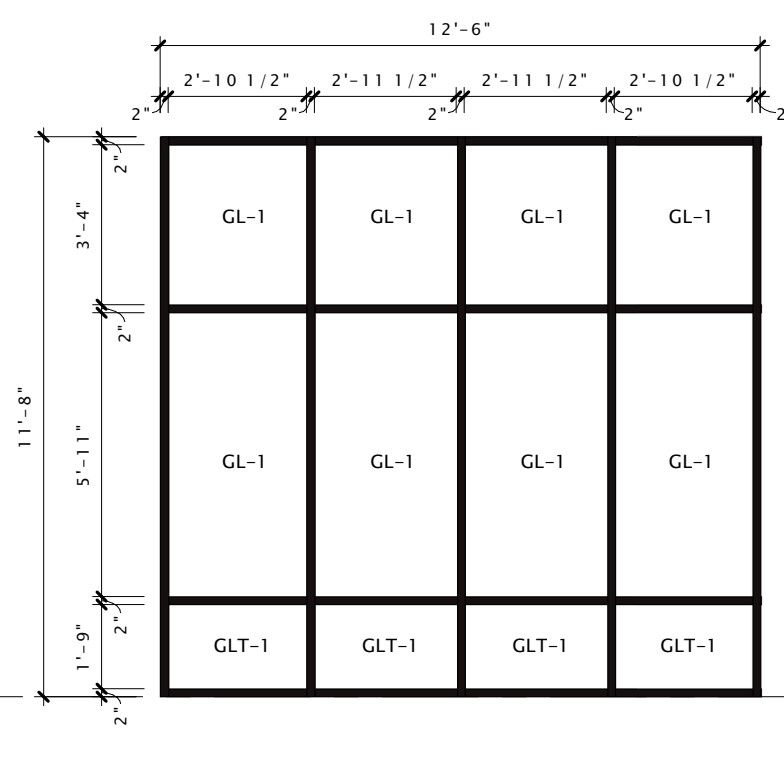
9 STOREFRONT ELEVATION - FACING E. WASH
1/4" = 1'-0"



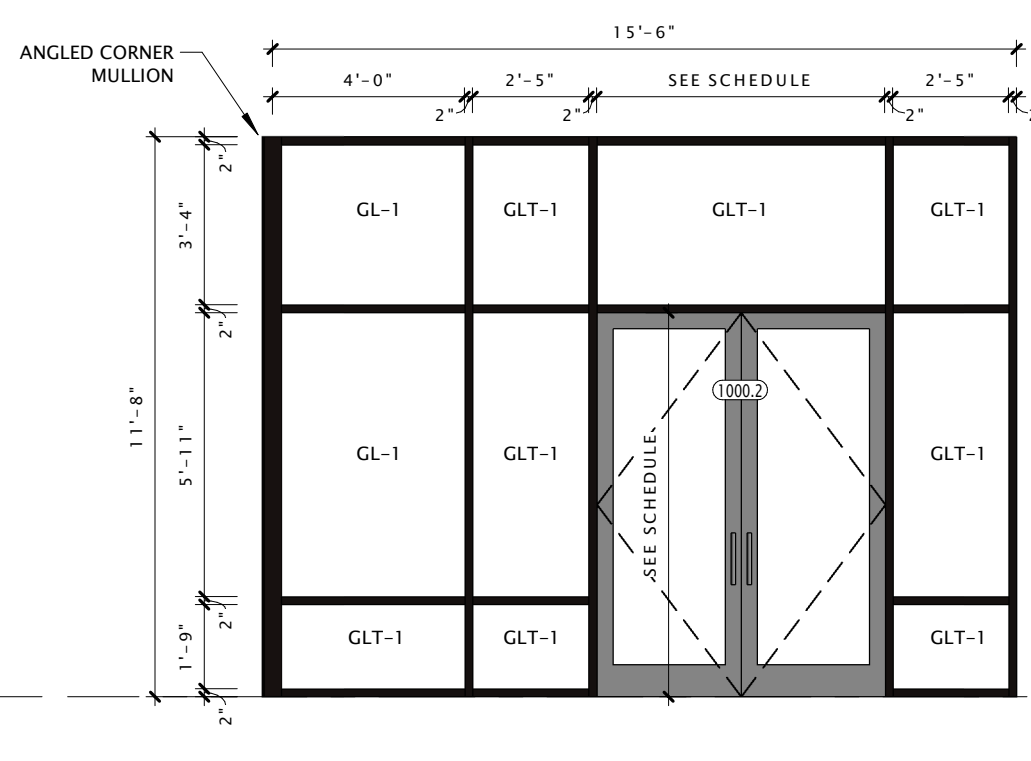
10 STOREFRONT ELEVATION - FACING E. WASH
1/4" = 1'-0"



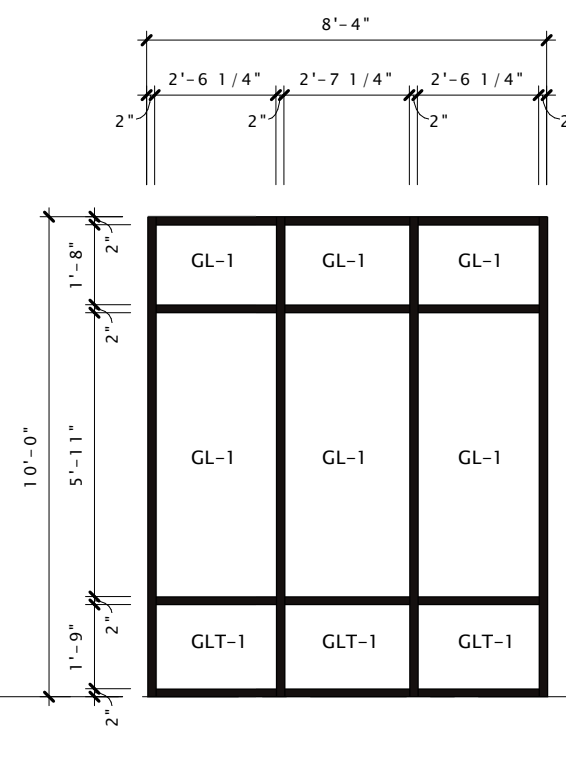
11 STOREFRONT ELEVATION - FACING E. WASH
1/4" = 1'-0"



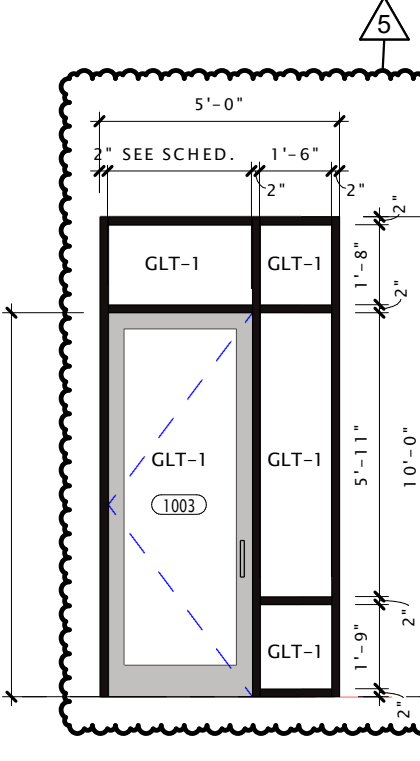
12 STOREFRONT ELEVATION - FACING E. WASH
1/4" = 1'-0"



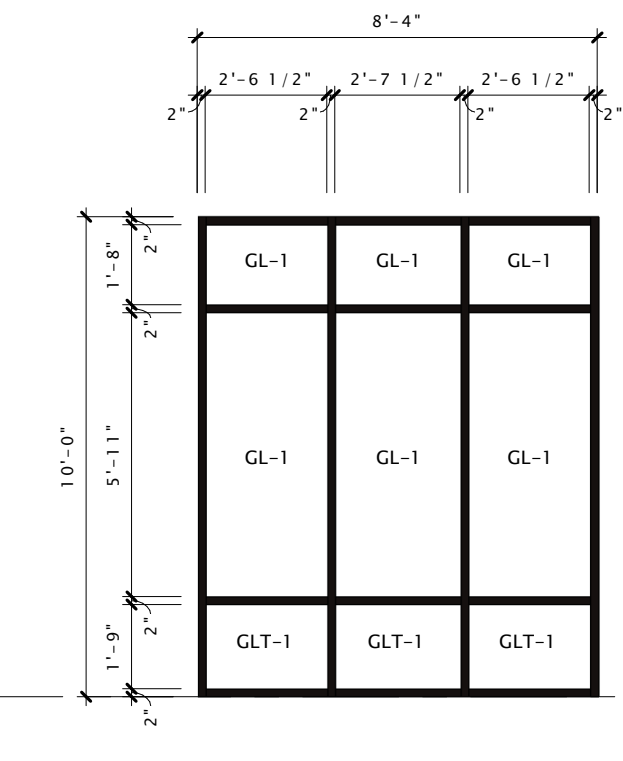
13 STOREFRONT ELEVATION - FACING 1ST STREET
1/4" = 1'-0"



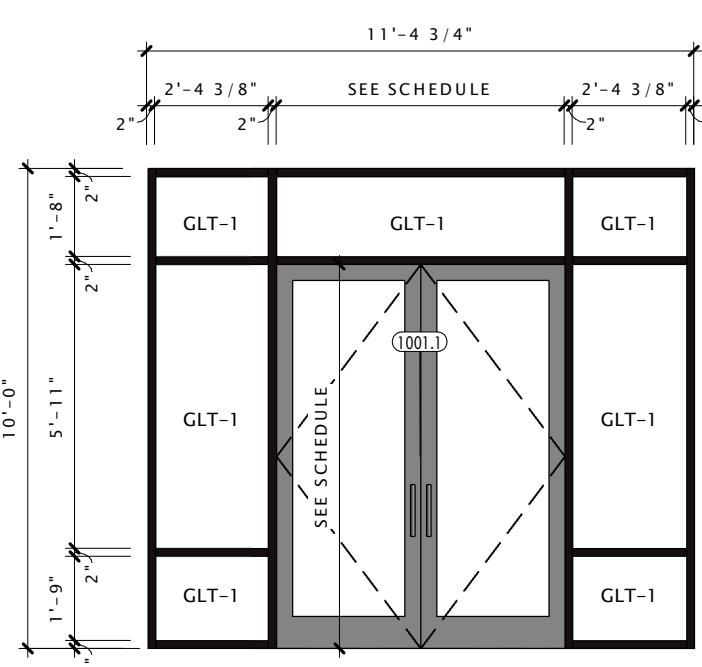
14 STOREFRONT ELEVATION - FACING PARKING
1/4" = 1'-0"



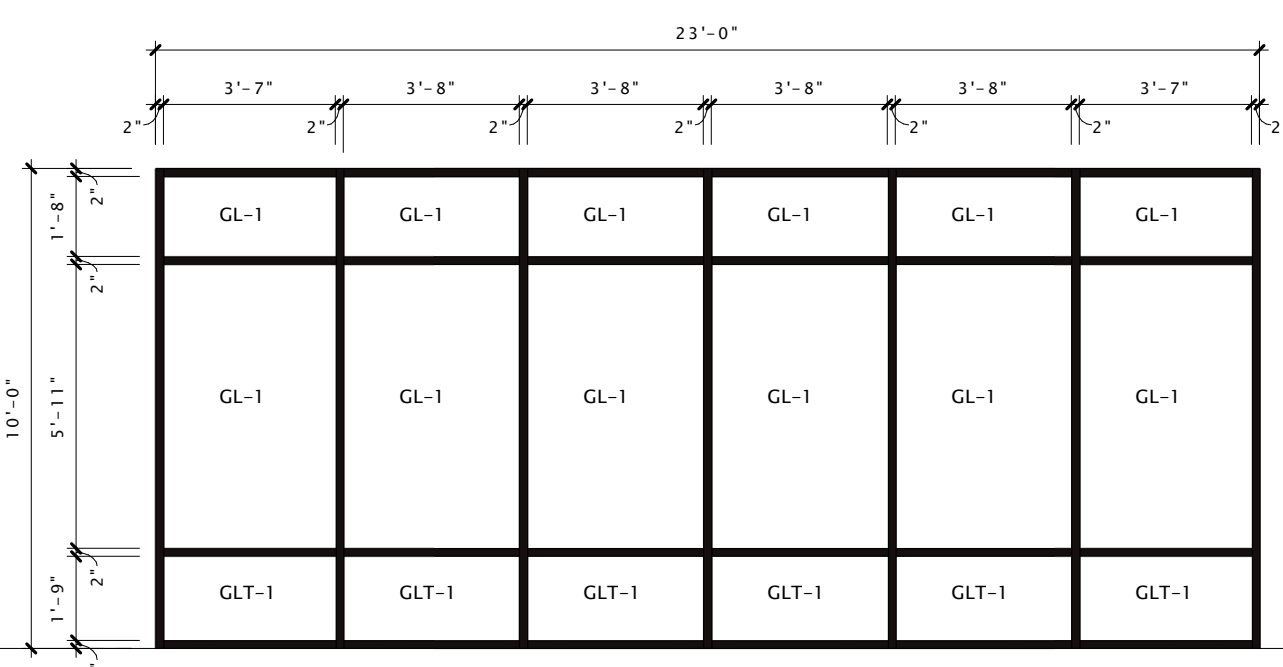
15 STOREFRONT ELEVATION - FACING PARKING
1/4" = 1'-0"



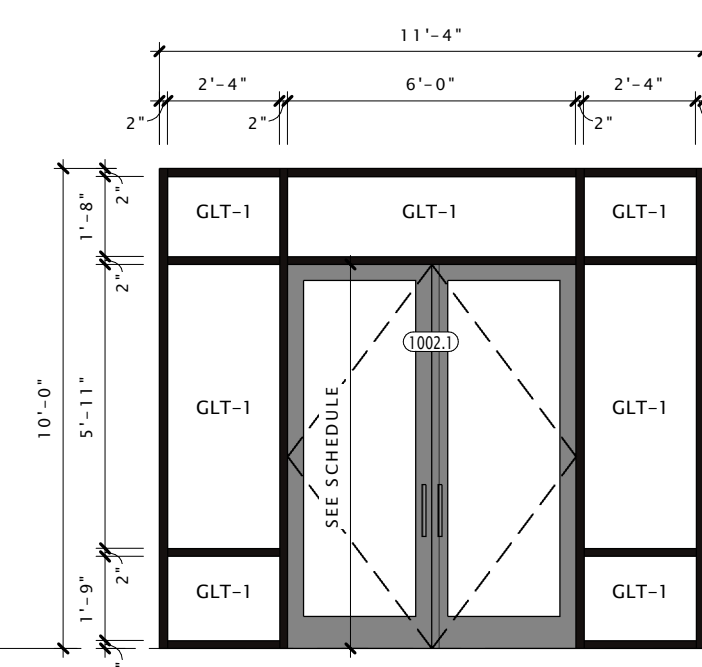
16 STOREFRONT ELEVATION - FACING PARKING
1/4" = 1'-0"



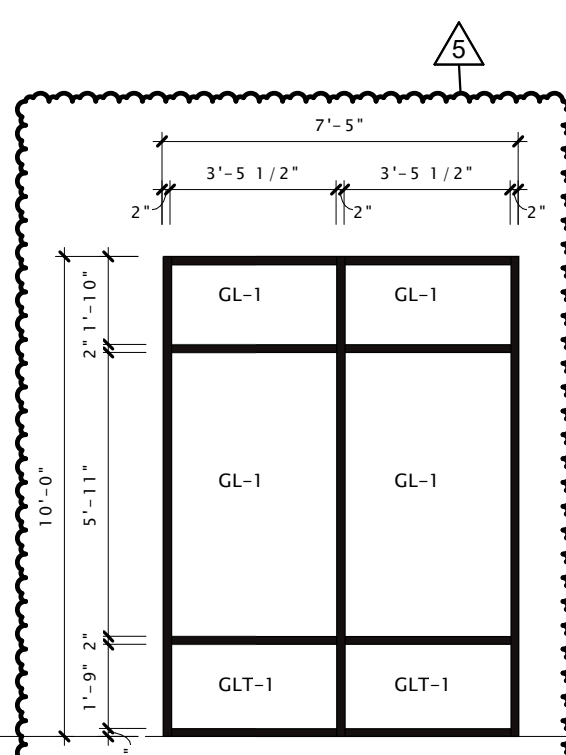
17 STOREFRONT ELEVATION - FACING PARKING
1/4" = 1'-0"



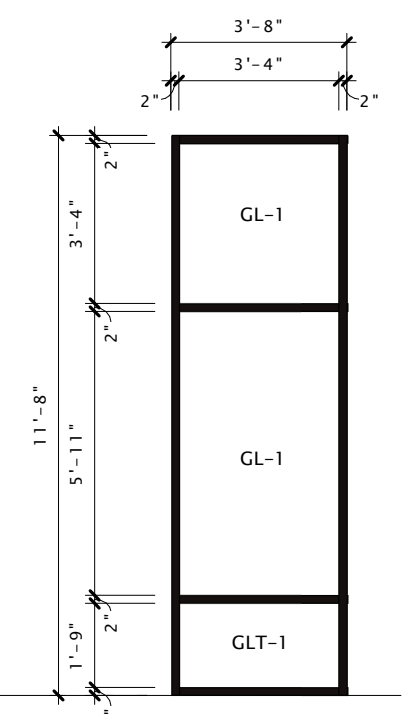
18 STOREFRONT ELEVATION - FACING PARKING
1/4" = 1'-0"



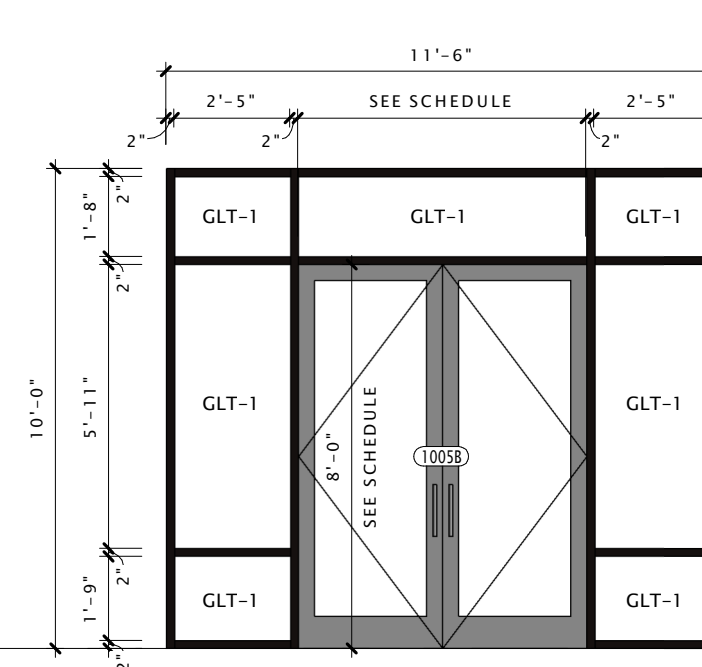
19 STOREFRONT ELEVATION - FACING PARKING
1/4" = 1'-0"



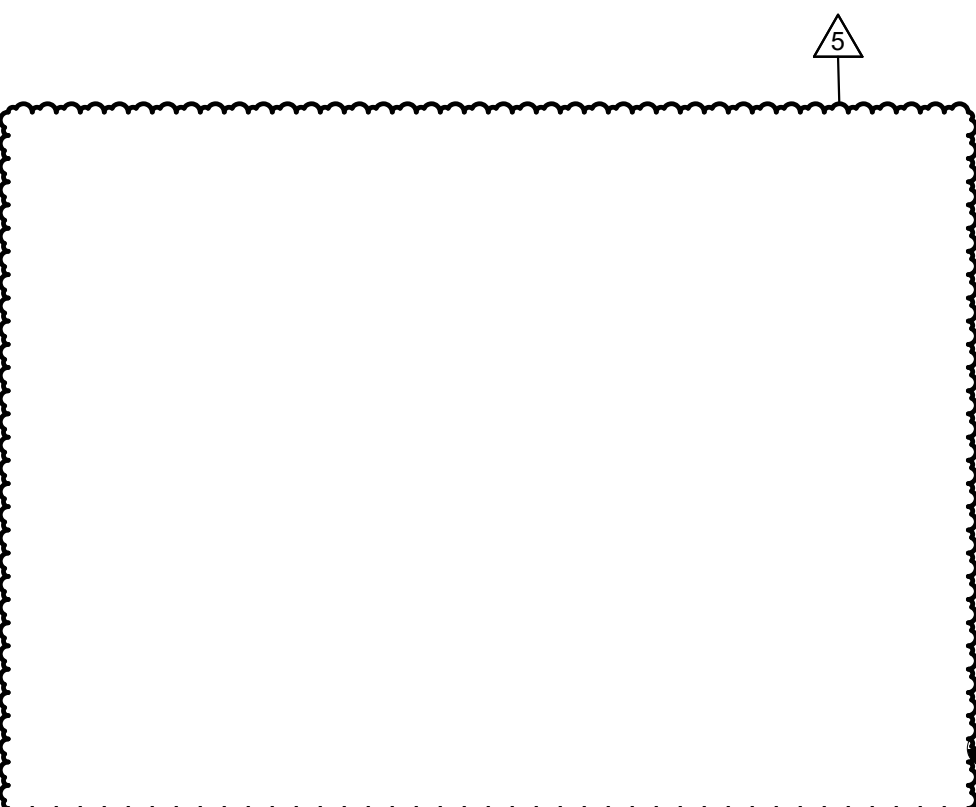
20 STOREFRONT ELEVATION - FACING PARKING
1/4" = 1'-0"



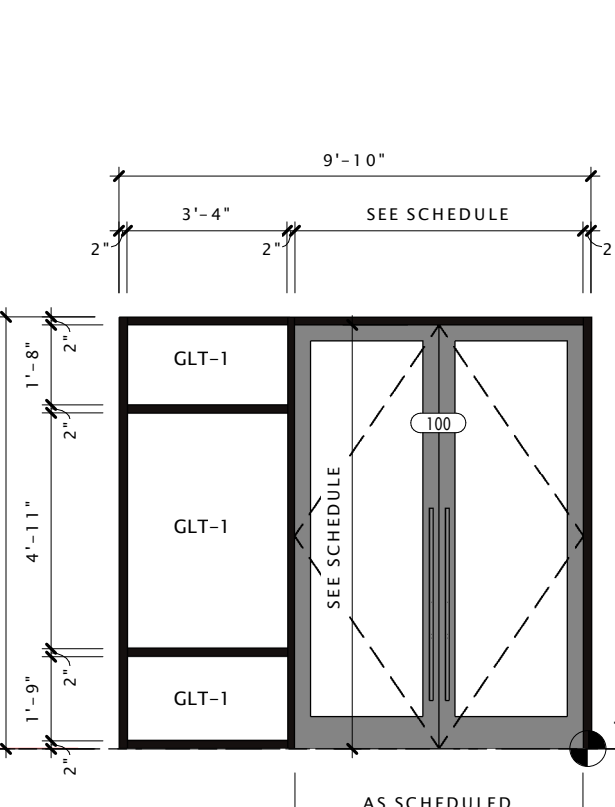
21 STOREFRONT ELEVATION - FACING BIKE PARKING
1/4" = 1'-0"



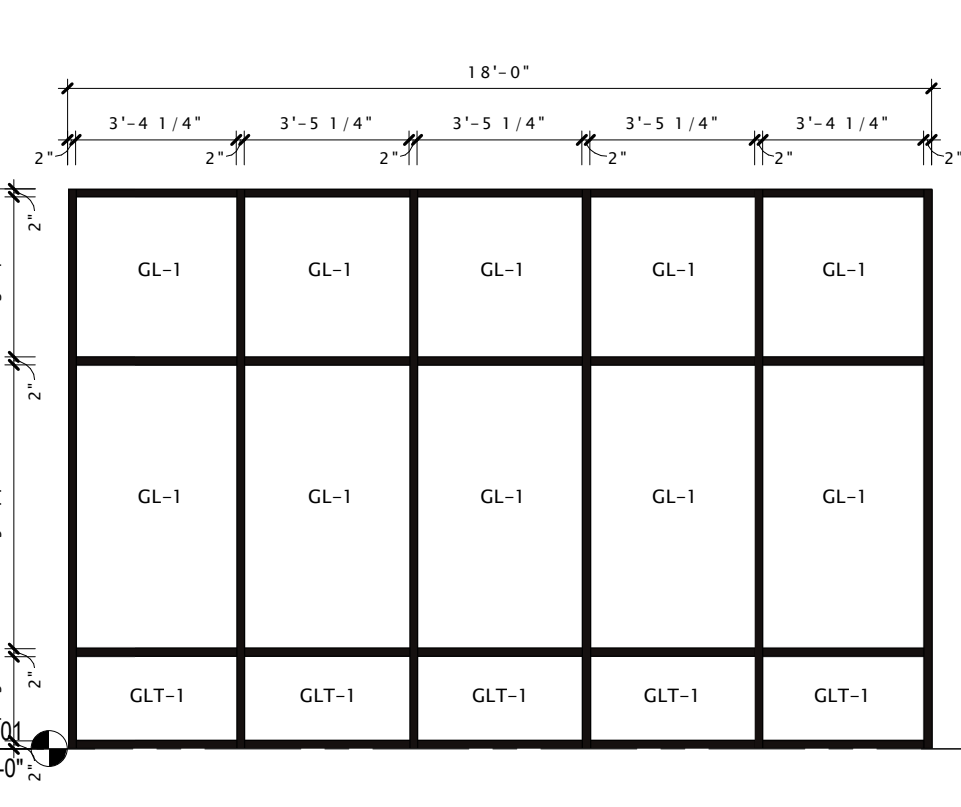
22 STOREFRONT ELEVATION - FACING PARKING
1/4" = 1'-0"



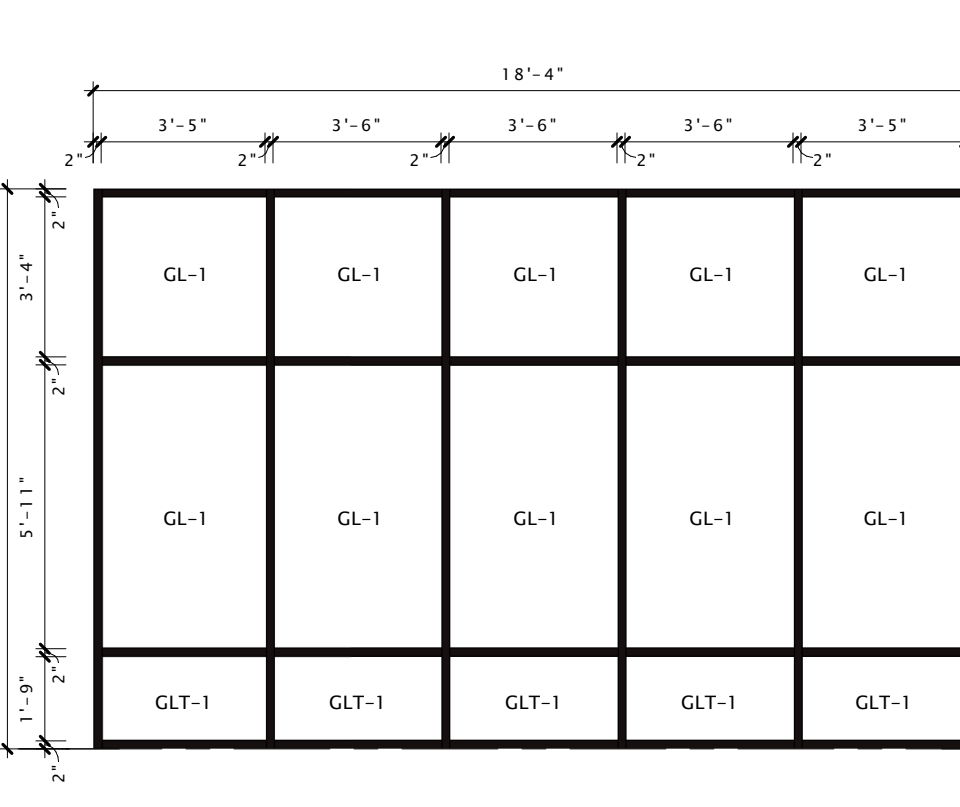
24 LOBBY VESTIBULE
1/4" = 1'-0"



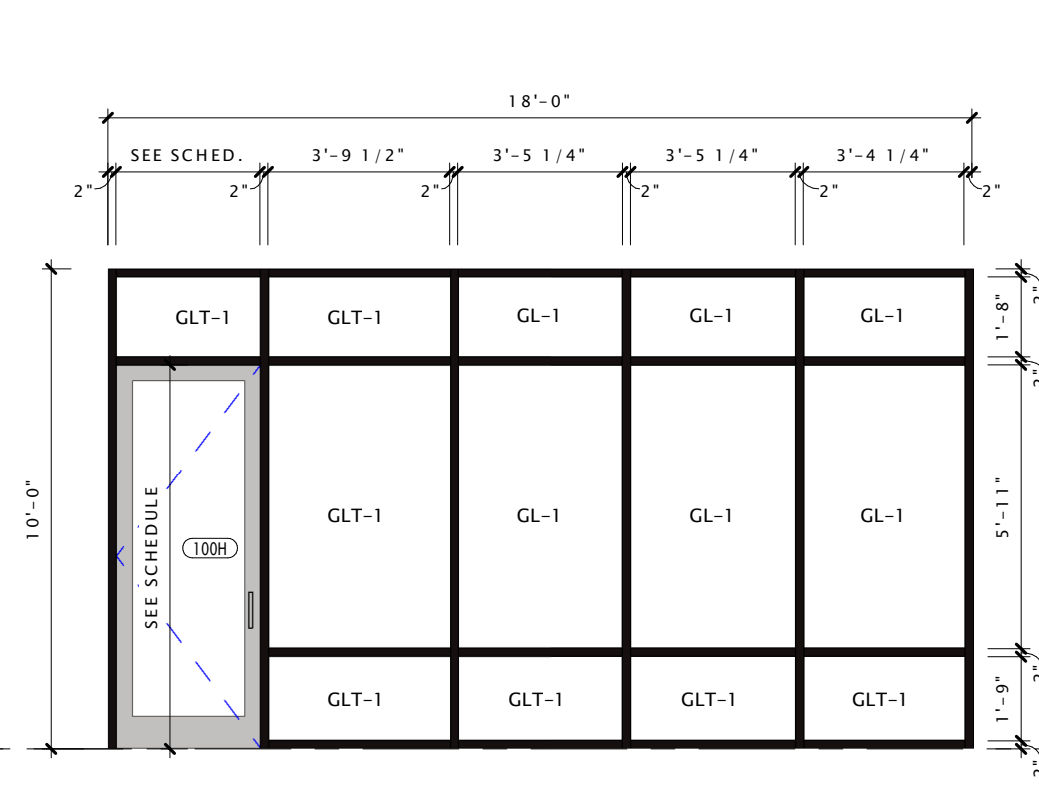
25 STOREFRONT AT LOBBY
1/4" = 1'-0"



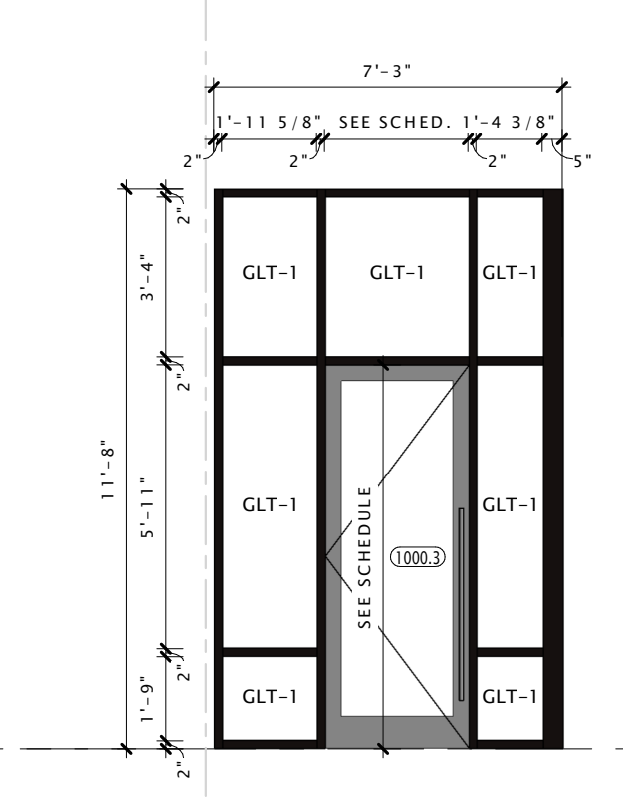
26 STOREFRONT FACING 1ST ST
1/4" = 1'-0"



27 STOREFRONT ELEVATION - FACING N.1ST STREET
1/4" = 1'-0"



28 STOREFRONT AT RESTAURANT
1/4" = 1'-0"



29 ENTRY - FACING 1ST STREET
1/4" = 1'-0"

GLAZING SCHEDULE
GLT-1: TEMPERED GLASS /LOW-E INSULATED
GL-1: VISION GLASS /LOW-E INSULATED
SG-1: SPANDREL GLASS /LOW-E INSULATED
SM-1: METAL PANEL
*NOTE: ALL STOREFRONT SHADED ON ELEVATIONS IS REQUIRED TO FOLLOW BIRD GLASS REQUIREMENTS PER CITY OF MADISON. NO STOREFRONT FACING THE INTERIOR PARKING REQUIRES BIRDBLASS.

STOREFRONT NOTES

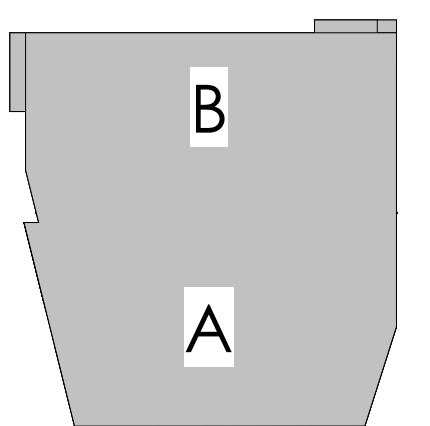
- ASSUME 2 FT TRANSOMS AT ALL STOREFRONT, UNLESS SHOWN OTHERWISE, AND MATCH/ALIGN WITH ADJACENT.
- ASSUME 6" KAWNEER TWIN SPAN 1600 SYSTEM BEING USED AT CURTAIN WALL AREA.
- ASSUME 4-1/2" KAWNEER TRIFAB 451T BEING USED AT ALL STOREFRONT ASSEMBLIES (12'-0" AND UNDER). VERIFY WITH STRUCTURAL.

*SEE HARDWARE SPEC FOR ALL ASSOCIATED HARDWARE PER OVT GROUP # ON DOOR SCHEDULE

JLA PROJECT NUMBER: 19-0802

THE STANDARD -
MADISON

1868 E WASHINGTON AVE
MADISON, WI 53704



CONSTRUCTION DOCUMENTS

DATE OF ISSUANCE 12.14.21

REVISION SCHEDULE		
Mark	Description	Date
3	CONSTRUCTION BULLETIN #5	1/06/2022
5	CONSTRUCTION BULLETIN #5	2/04/2022

SHEET TITLE

STOREFRONT
FRAMING
ELEVATIONS

SHEET NUMBER

A810