

02-12-2020...Unable to Open DXF Files:

Autodesk Navisworks Manage 2019 Untitled

Type a keyword or phrase


Home Viewpoint Review Animation View Output BIM 360 Render BIM Track®

Append Refresh Reset All... File Options Select Save Selection Select All Select Same Selection Tree Find Items Hide Require Hide Unselected Unhide All Links Quick Properties Properties Clash Detective TimeLiner Quantification Autodesk Rendering Animator Scripter Appearance Profiler Batch Utility DataTools App Manager

Project Select & Search Visibility Display Tools

Selection Tree Properties Saved Viewpoints

Autodesk Navisworks Manage 2019

 28-1.DXF could not be opened or is unavailable.  
It is recommended to re-open your model to avoid data loss.

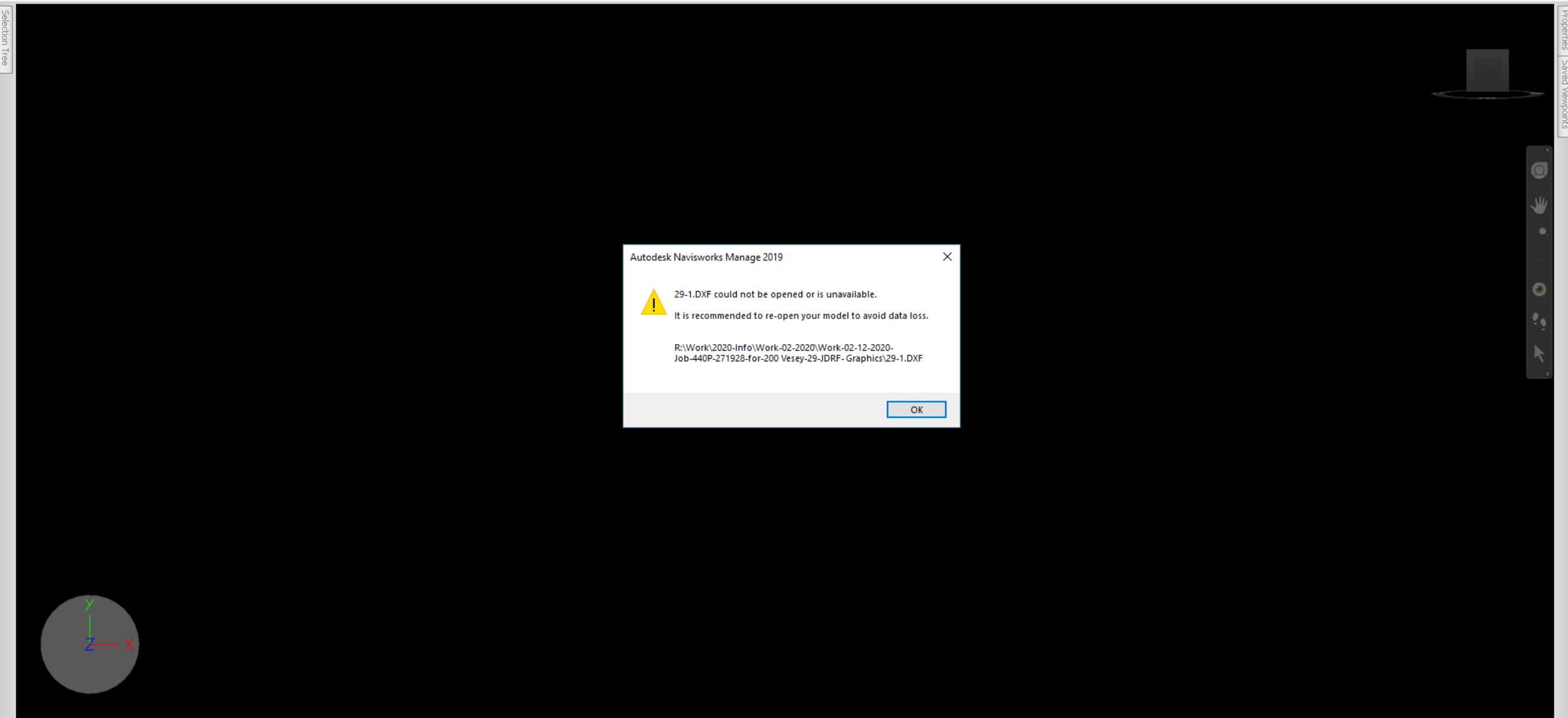
R:\Work\2020-Info\Work-02-2020\Work-02-12-2020-  
Job-440P-271928-for-200 Vesey-28-JDRF- Graphics\28-1.DXF

OK


Home Viewpoint Review Animation View Output BIM 360 Render BIM Track®

Append Refresh Reset All... File Options Select Save Selection Select All Select Same Selection Tree Find Items Hide Require Hide Unselected Unhide All Links Quick Properties Properties Clash Detective TimeLiner Quantification Autodesk Rendering Animator Scripter Appearance Profiler Batch Utility Compare DataTools App Manager

Project Select & Search Visibility Display Tools



Autodesk Navisworks Manage 2019

 29-1.DXF could not be opened or is unavailable.  
It is recommended to re-open your model to avoid data loss.

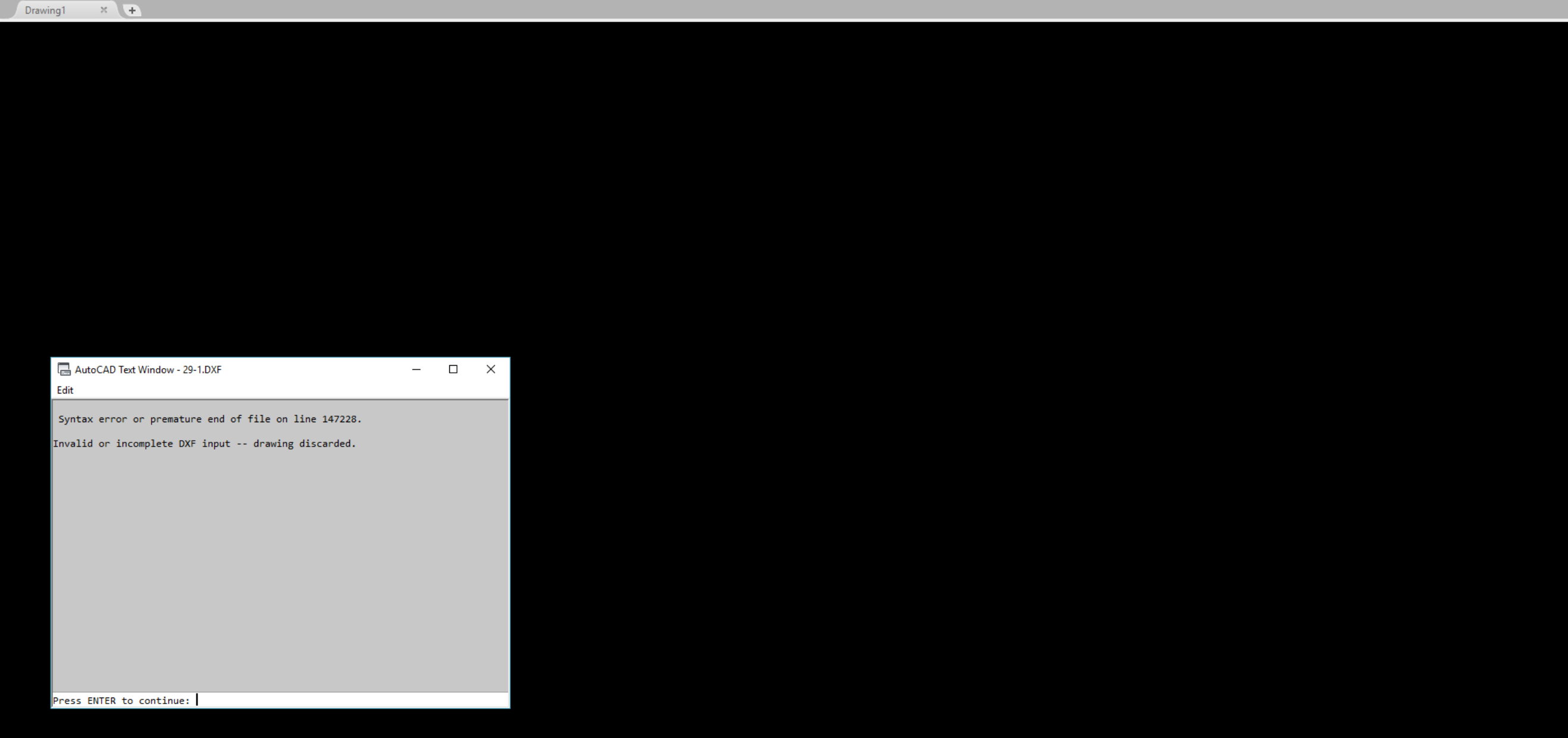
R:\Work\2020-Info\Work-02-2020\Work-02-12-2020-Job-440P-271928-for-200 Vesey-29-JDRF- Graphics\29-1.DXF

OK



DX (DATAEXTRACTION) ?

- DXFOUT
- DXFIN** ←
- DXBIN
- DXEVAL



```

AutoCAD Text Window - 29-1.DXF
Edit

Syntax error or premature end of file on line 147228.
Invalid or incomplete DXF input -- drawing discarded.

Press ENTER to continue: |

```

```

Syntax error or premature end of file on line 147228.
Invalid or incomplete DXF input -- drawing discarded.

Press ENTER to continue:

```