

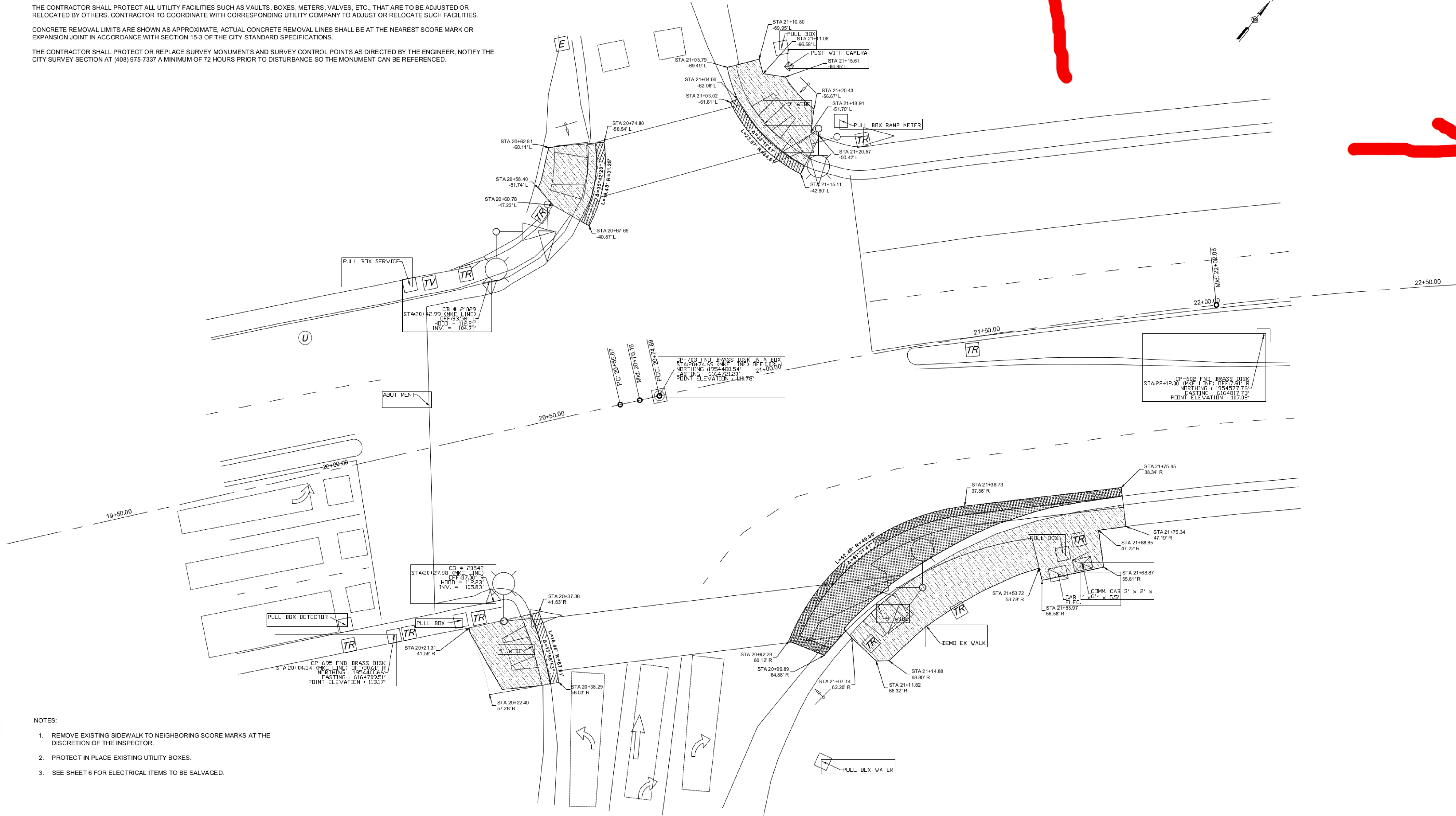
DEMOLITION NOTES

PROTECT EXISTING UTILITIES, SIGNS, ETC., UNLESS OTHERWISE NOTED. REMOVE RAMPS, CURB AND GUTTER, SIDEWALK, BUS PAD TO NEAREST JOINT IN AREA OF WORK LIMITS. CONFORM AND GRIND A.C. PAVEMENT AND OVERLAY IN AREA OF WORK LIMIT.

THE CONTRACTOR SHALL PROTECT ALL UTILITY FACILITIES SUCH AS VAULTS, BOXES, METERS, VALVES, ETC., THAT ARE TO BE ADJUSTED OR RELOCATED BY OTHERS. CONTRACTOR TO COORDINATE WITH CORRESPONDING UTILITY COMPANY TO ADJUST OR RELOCATE SUCH FACILITIES.

CONCRETE REMOVAL LIMITS ARE SHOWN AS APPROXIMATE. ACTUAL CONCRETE REMOVAL LINES SHALL BE AT THE NEAREST SCORE MARK OR EXPANSION JOINT IN ACCORDANCE WITH SECTION 15-3 OF THE CITY STANDARD SPECIFICATIONS.

THE CONTRACTOR SHALL PROTECT OR REPLACE SURVEY MONUMENTS AND SURVEY CONTROL POINTS AS DIRECTED BY THE ENGINEER. NOTIFY THE CITY SURVEY SECTION AT (408) 975-7337 A MINIMUM OF 72 HOURS PRIOR TO DISTURBANCE SO THE MONUMENT CAN BE REFERENCED.



- NOTES:
- 1. REMOVE EXISTING SIDEWALK TO NEIGHBORING SCORE MARKS AT THE DISCRETION OF THE INSPECTOR.
 - 2. PROTECT IN PLACE EXISTING UTILITY BOXES.
 - 3. SEE SHEET 6 FOR ELECTRICAL ITEMS TO BE SALVAGED.

8511 - M... ROAD... ZERO SAFETY IMPROVEMENTS PROJECT
DEMO... & NORTHBOUND... RAMPS

STATIONS 19+50 TO 22+50

6			
5			
4			
3			
2			
1			
	REVISIONS	INITIALS	DATE

DEPT. OF PUBLIC WORKS
CONSTRUCTION
ELECTRICAL
SANITARY
STORM
SURVEY

DEPT. OF TRANSPORTATION
MAINTENANCE
TRAFFIC OPS.
GEOMETRICS
TRAFFIC SIGNALS/SIGNAL OPS



DESIGNED BY		DIRECTOR OF PUBLIC WORKS	
CHECKED BY			
PROJ MGR			
DATE		MARCH 15, 2020	
SCALE		1"=10'	
SHEET NO. 05 OF 45 SHEETS		CPMS: 488471	