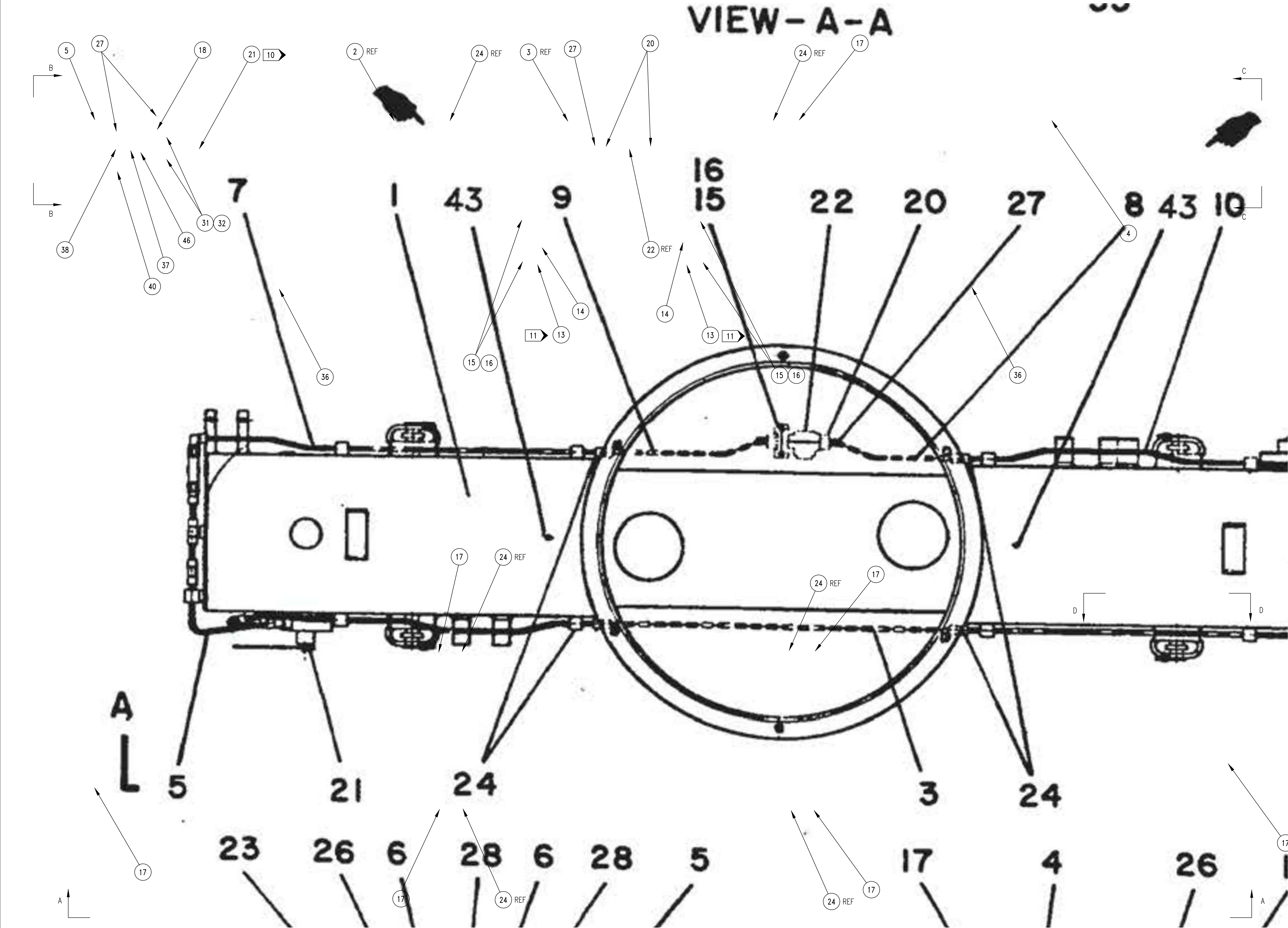


GENERAL NOTES	
NOTE	CONTENTS
1	BREAK ALL SHARP CORNERS AND EDGES UNLESS OTHERWISE SPECIFIED



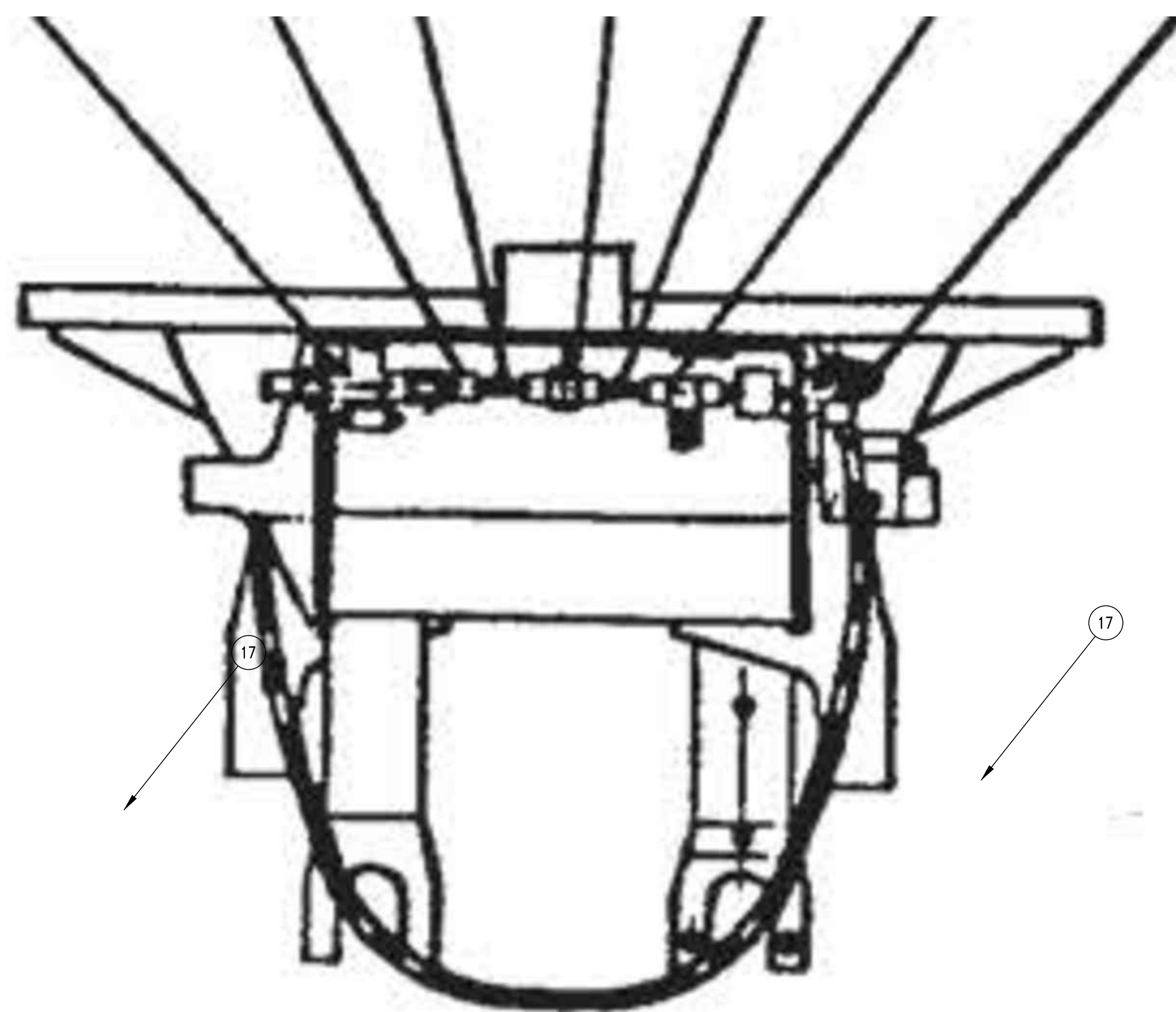
LIST OF MATERIALS					
ITEM NUMBER	QTY	ORIGINAL PART NUMBER	ALSTOM PART NUMBER	DESCRIPTION	MATERIAL / SPECIFICATION
X	X	1248-806-AMN	DE00000494863	BOLSTER BEAM ASSEMBLY MOTOR TRK (OEM P/N 1248-806-AMN)	792
1	1	1248-806-AKC	DE00000494883	BOLSTER BEAM (OEM P/N 1248-806-AKC)	
2	1			PIPE, 3/8" O.D., 0.035" WALL THK	ASTM A269
3	1			PIPE, 3/8" O.D., 0.035" WALL THK	ASTM A269
4	1			PIPE, 3/8" O.D., 0.035" WALL THK	ASTM A269
5	1			PIPE, 3/8" O.D., 0.035" WALL THK	ASTM A269
6	1			PIPE, 3/8" O.D., 0.035" WALL THK	ASTM A269
7	1			PIPE, 3/8" O.D., 0.035" WALL THK	ASTM A269
8	1			PIPE, 3/8" O.D., 0.035" WALL THK	ASTM A269
9	1			PIPE, 3/8" O.D., 0.035" WALL THK	ASTM A269
10	1			PIPE, 3/8" O.D., 0.035" WALL THK	ASTM A269
11	1			PIPE, 3/8" O.D., 0.035" WALL THK	ASTM A269
12	1			PIPE, 3/8" O.D., 0.035" WALL THK	ASTM A269
13	2	1248-806-AHG		BRACKET	
14	2	1248-915-240	DE00000497458	RUBBER BUFFER (VULCANITE P/N VP3134-S00, OEM P/N 1248-915-240)	
15	6	TS7P006Z	DTR00000400025	CONICAL SPRING WASHER, HEAVY PER DIN6796, 3/8", 10 MM (10.5 MM ID X 23 MM OD X 2.5 MM THICK)	CS, ZP
16	6	TS1P006020Z	DTR0000066730	CAP SCREW 3/8-16 X 1-1/4 INCH LG, HX HD	CS, GR5, ZP
17	10	TK-10056-DRP	DE00000497464	CLAMP (OEM P/N TK-10056-DRP)	
18	2	TK-10056-CCY	DE00000313098	ADAPTER, M12 X 1.5 MALE TO 3/8 NPT FEMALE, CS, ZP	PARKER P/N: M12-3/8F870HGS 1.38 LG
19	2	TK-10056-CDC	DE00000313106	ADAPTER, M14 X 1.5 MALE TO 3/8 NPT FEMALE, CS, ZP	PARKER P/N: M14-3/8F870HGS 1.38 LG
20	2	TK-10056-CDE	DE00000313101	ADAPTER, M22 X 1.5 ISO 9974 MALE TO 3/8 NPT FEMALE, CS, ZP	PARKER P/N: M22-3/8F80HGS 1.85 LG
21	2	TK-10056-CCS	DE00000233971	LEVELING VALVE	
22	1	TK-10056-CZX	DE00000233966	DUPLEX CHECK VALVE, BRAKE	
23	2	TK-10056-CXA	DE00000262063	TEST FITTING T2	
24	4	TS64P63SS	DTR0000519299	UNION, MALE, 3/8 TUBE X 3/8 TUBE, SSTL	PARKER P/N: 6 HBU-SS
25	1			PIPE, 3/8" O.D., 0.035" WALL THK	ASTM A269
26	1	TS64P131SS	DTR0000124415	CONNECTOR, MALE, 3/8 TUBE X 3/8 NPTF, SSTL	PARKER P/N: 6-6 FBU-SS
27	4	TS64P155SS	DTR0000518629	ELBOW, MALE, 90°, 3/8 TUBE X 3/8 NPTF, SSTL	PARKER P/N: 6-6 CBU-SS
28	2	TS64P223SS	DTR0000519301	TEE, MALE BRANCH, 2 X 3/8 TUBE X 1/4 NPTF, SSTL	PARKER P/N: 6 SBU-SS
29				NOT USED	
30				NOT USED	
31	4	TS1P005028Z	DTR0000066497	CAP SCREW 5/16-18 X 1-3/4 INCH LG, HX HD	CS, GR5, ZP
32	4	TS7P005Z	DTR0000286359	CONICAL SPRING WASHER, HEAVY PER DIN6796, 5/16", 8 MM (8.4 MM ID X 18 MM OD X 2 MM THICK)	CS, ZP
33	4	TK-10056-DTS	DE00000497473	BRACKET (OEM P/N TK-10056-DTS)	
34	4	TS1P008012Z	DTR0000403374	CAP SCREW 1/2-13 X 3/4 INCH LG, HX HD	CS, GR5, ZP
35	4	TS7P008Z	DTR00000421770	CONICAL SPRING WASHER, HEAVY PER DIN6796, 1/2", 12 MM (13 MM ID X 29 MM OD X 3 MM THICK)	CS, ZP
36	2	TK-10056-DXL	DE00000497476	WIRE (OEM P/N TK-10056-DXL)	
37	1	TK-10056-LEE	DE00000497661	MALE HEX PIPE NIPPLE 3/8 NPT, SSTL (OEM P/N TK-10056-LEE)	PARKER 3/8FF
38	1	TK-10056-LED	DE00000497664	FEMALE PIPE TEE, 3/8 NPT, SSTL (OEM P/N TK-10056-LED)	PARKER 3/8MMO
39	1	TK-10056-GDM	DE00000497667	ADAPTER FITTING, FEMALE 1/4 NPT TO 9/16 37 DEG JIC, BRASS (OEM P/N TK-10056-GDM)	
40	1	TK-10056-LCU	DE00000493070	ADAPTER FITTING, MALE 3/8 NPT TO 7/8 37 DEG JIC, SSTL (OEM P/N TK-10056-LCU)	
41				NOT USED	
42	3	TK-10056-MME	DE00000497687	MALE 3/8 BRANCH TEE, SSTL (OEM P/N TK-10056-MME)	
43				NOT USED	
44	-		DTR0000519295	NUT, TUBING 3/8, SSTL (PART OF ITEMS 24, 26, 27, 28, AND 47)	PARKER P/N: 6 BU-SS
45	-		DTR0000518628	FERRULE, TUBING 3/8, SSTL (PART OF ITEMS 24, 26, 27, 28, AND 47)	PARKER P/N: 6 TU-SS
46	2	TK-10056-CCY	DE00000313104	ADAPTER, M12 X 1.5 ISO 9974 MALE TO 3/8 NPT FEMALE, CS, ZP	PARKER M12-3/8F80HGS 1.38 LG
47	1	TS64P153SS	DTR0000519297	ELBOW, MALE, 90°, 3/8 TUBE X 1/4 NPTF, SSTL	PARKER P/N: 6 CBU-SS
48	0.05		DTR0000104447	ANTISEIZE 8 OZ CAN W/BRUSH	
49	0.05		DTR0000234728	LOCTITE 565 PST THREAD SEALANT, 250 ML TUBE	
50	0.01		DTR0000180960	MOBILUX EP-2 LITHIUM GREASE	
51	2		DTR00009496889	GASKET DIN7603 A14X18 CU	COPPER

SHT/ZONE	REV	DESCRIPTION	DATE
A	NEW RELEASE		12/31/19

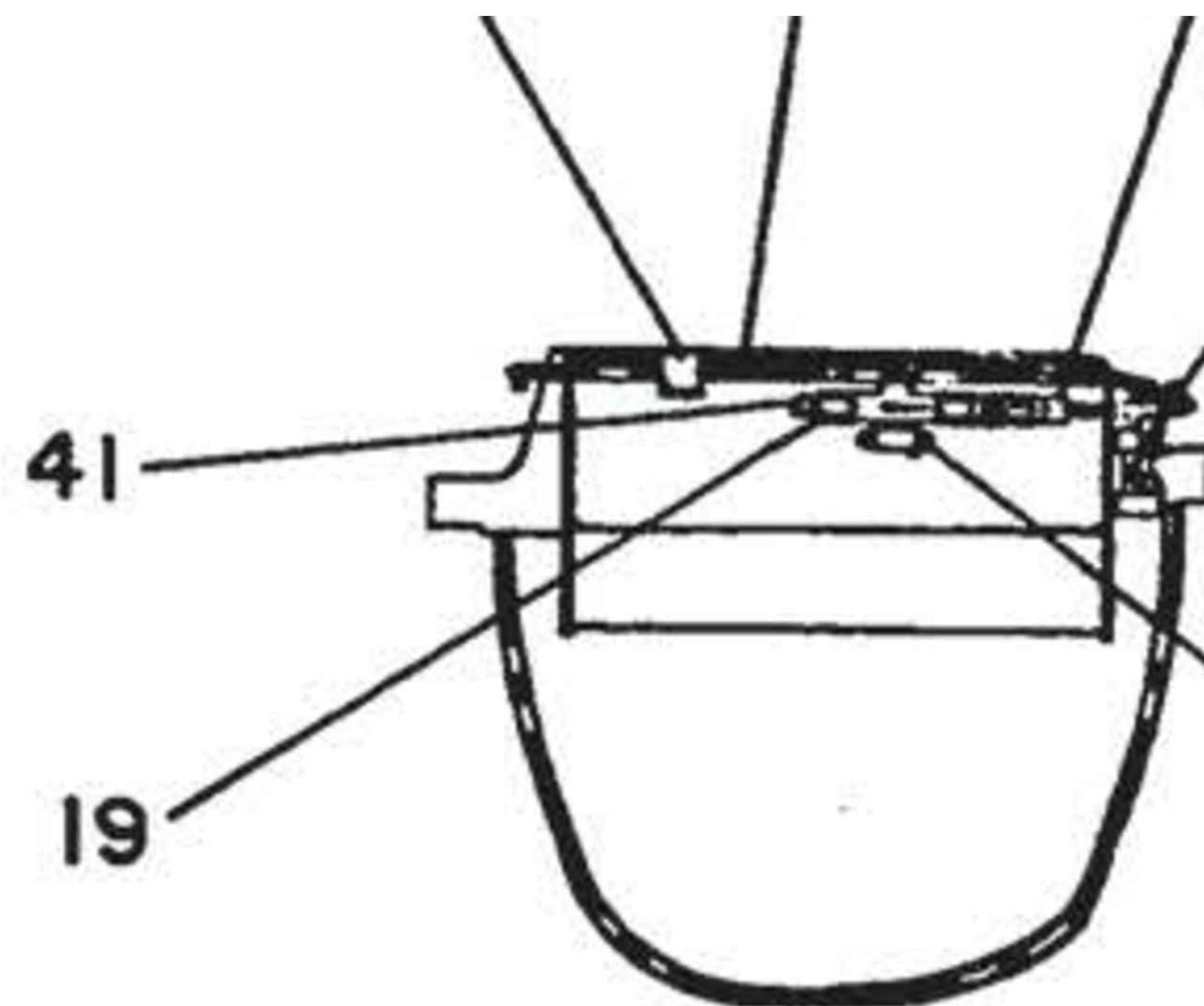
PROPRIETARY NOTICE	
THIS DRAWING OR PRINT IS CONFIDENTIAL AND THE INFORMATION THEREON SHALL NOT BE COPIED NOR UTILIZED IN ANY MANNER, NOR IN PART, WITHOUT PERMISSION FROM ALSTOM TRANSPORTATION INC. DRAWING OR PRINT TO BE RETURNED TO ALSTOM TRANSPORTATION INC. UPON REQUEST.	

ENGINEER	BY: KMILLER
ENGINEER	BY: TMORINO
UNLESS OTHERWISE SPECIFIED:	
DIMENSIONS ARE IN INCHES	
TOLERANCES ARE AS FOLLOWS:	
DECIMALS	± .06
ANGULAR	± .010
FRACTIONAL	± 1/16
DO NOT SCALE	

ALSTOM TRANSPORTATION INC.	
1 TRANSIT DRIVE	
HORNELL, NEW YORK	
DRAWING TITLE	
BOLSTER BEAM ASSEMBLY	
MOTOR TRK	
(OEM P/N 1248-806-AMN)	
SIZE	DE00000494863
REVISION	A
SCALE	NTS
WEIGHT	N/A
SHEET	1 OF 2



VIEW-B-B



VIEW-C-C

FIGURE 2-5. BOLSTER BEAM ASSEMBLY, POWERED TR

PROPRIETARY NOTICE
THIS DRAWING OR PRINT IS CONFIDENTIAL AND THE INFORMATION THEREON SHALL NOT
BE COPIED NOR UTILIZED IN ANY WAY, NOR IN PART, WITHOUT PERMISSION FROM
ALSTOM TRANSPORTATION INC. DRAWING OR PRINT TO BE RETURNED TO ALSTOM
TRANSPORTATION INC. UPON REQUEST.

UNLESS OTHERWISE SPECIFIED:
DIMENSIONS ARE IN INCHES
TOLERANCES ARE AS FOLLOWS
DECIMALS
XX ± .06
XXX ± .010
ANGULAR
FRACTIONAL
± 1/16

DO NOT SCALE

ALSTOM TRANSPORTATION INC.
1 TRANSIT DRIVE
HORNELL, NEW YORK

DRAWING TITLE
XXX
XXX
XXX

REVISION
DE00000XXXXXX

SCALE NTS WEIGHT N/A SHEET XX OF XX