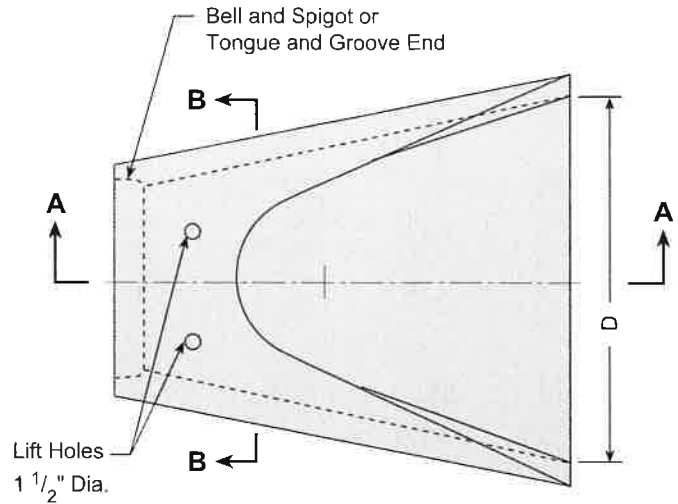
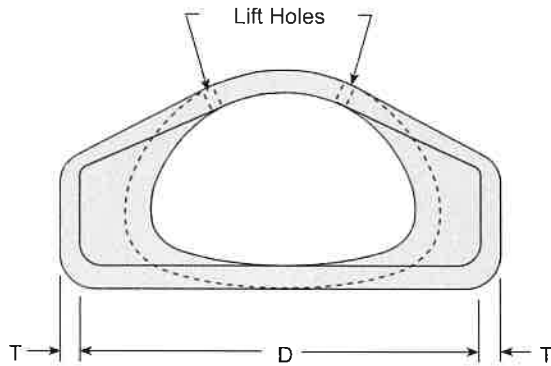


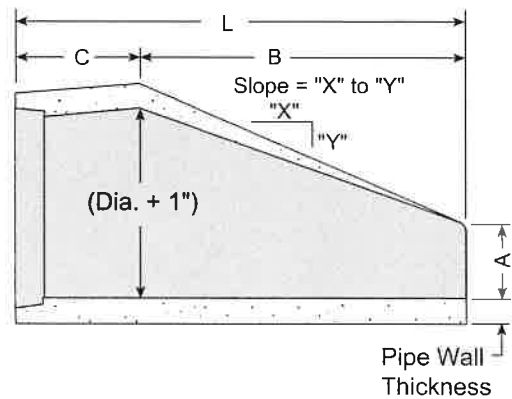
Reinforced Concrete Pipe



Plan View



Section B-B



Section A-A

Standard Dimensions

Equiv. Size (In.)	Span-Rise (Nominal) (In.)	Metric Equiv. (mm)	Wall Thick. (In.)	Weight Lbs. per Section	Slope	A (In.)	B (In.)	C (In.)	D (In.)	L (In.)
18	22 x 13	560 x 345	2 1/2	1,050	3:1	7	27	45	36	72
24	29 x 18	725 x 460	3	1,580	3:1	8	39	33	48	72
30	36 x 23	920 x 570	3 1/2	2,250	3:1	10	48	24	60	72
36	44 x 27	1110 x 675	4	3,900	3:1	10	60	36	72	96
42	51 x 31	1300 x 795	4 1/2	5,420	3:1	15	60	36	78	96
48	58 x 36	1485 x 915	5	6,540	3:1	21	60	36	84	96
54	65 x 40	1650 x 1015	5 1/2	7,640	3:1	25	60	36	90	96
60	73 x 45	1855 x 1145	6	9,510	3:1	26	75	21	96	96
72	88 x 54	2235 x 1370	7	14,840	3:1	35	78	22	120	100

Note:

1.) Joint Material: Preformed flexible mastic (Federal Spec. SS-S-210A) bituminous plastic cement.

-No Scale-

All dimensions subject to allowable specification tolerances.

TITLE	PLANT	STATE	SECTION PAGE	DATE
Precast Culvert End Sections For Concrete Arch Pipe		AR	4.2	2-1-05

