

Problems Autocad 2018

Belgium, 13 03 2018

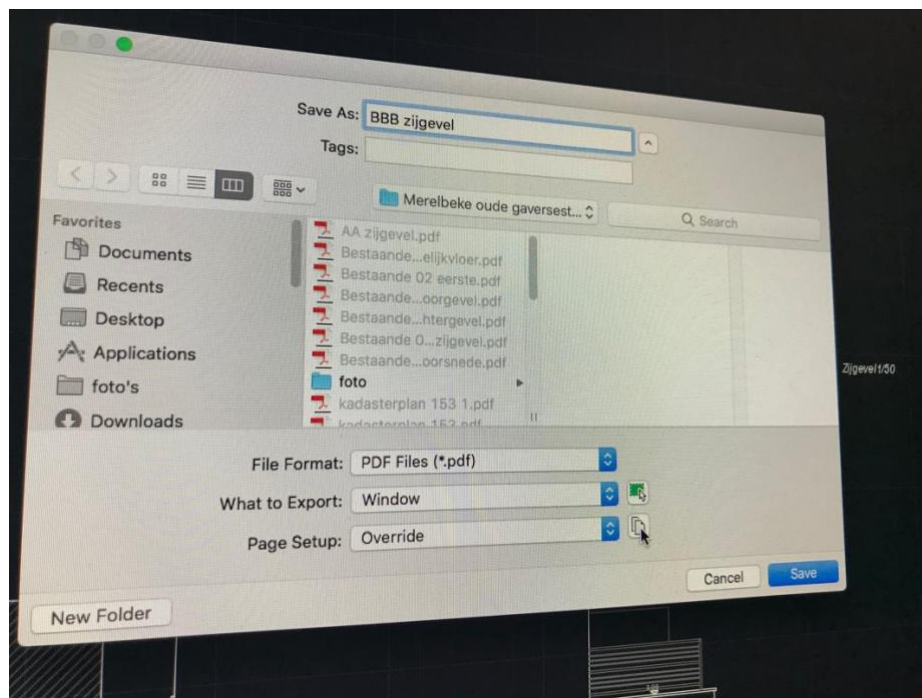
Landscape model of PDF.

Using export

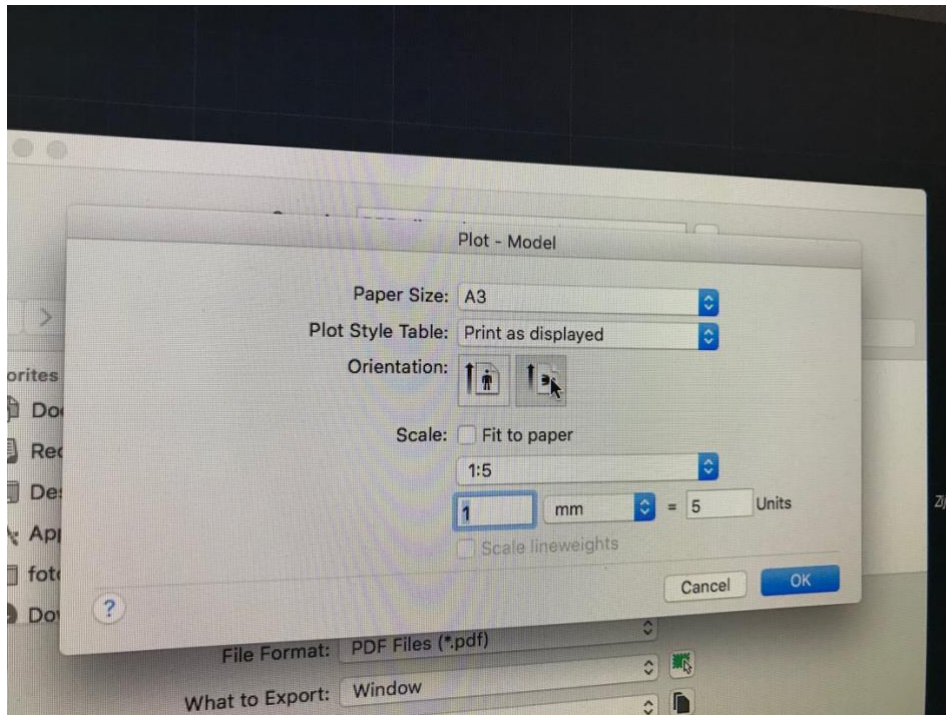
Drawing I like to make landscape to PDF.



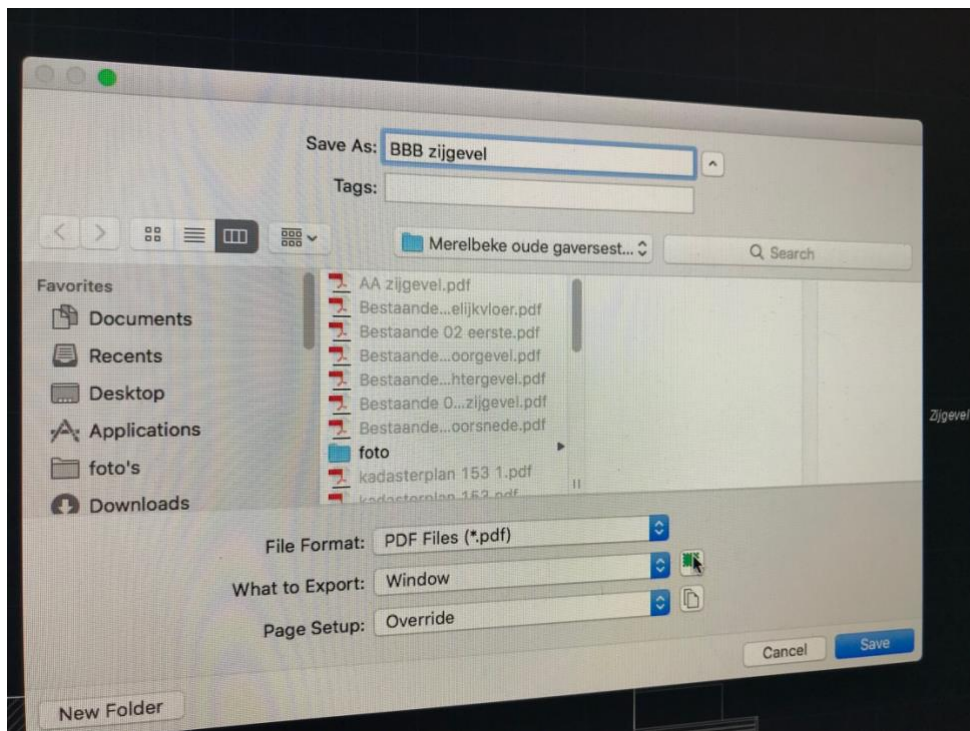
I click on Export.



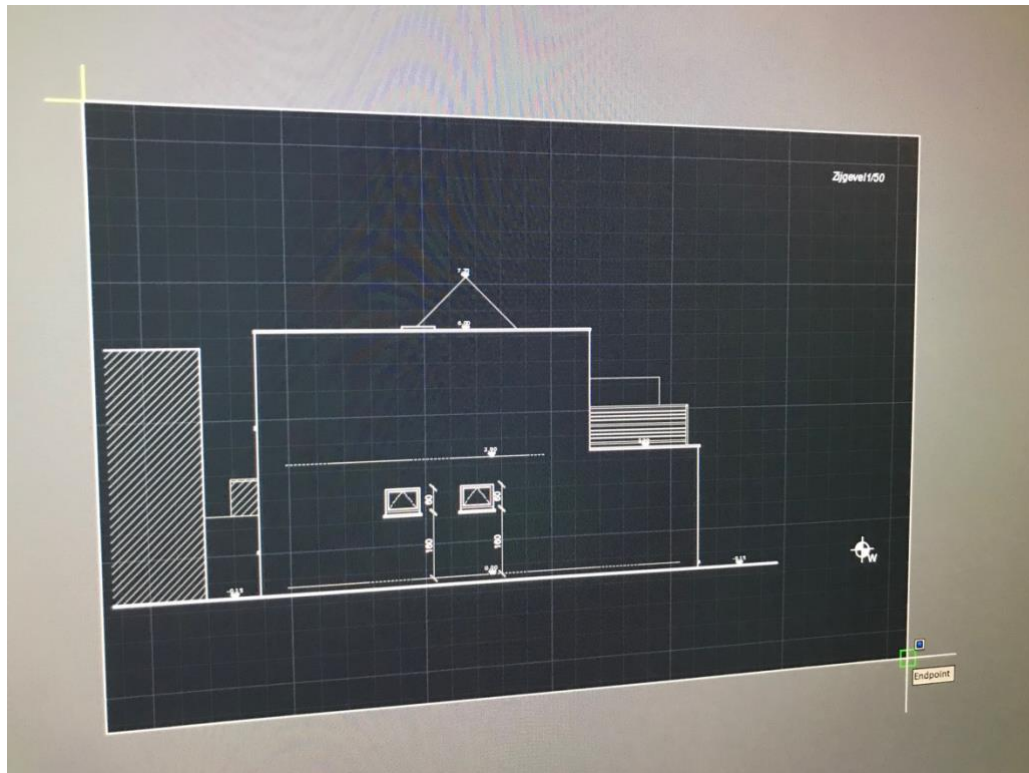
I click on landscape model paper size A3



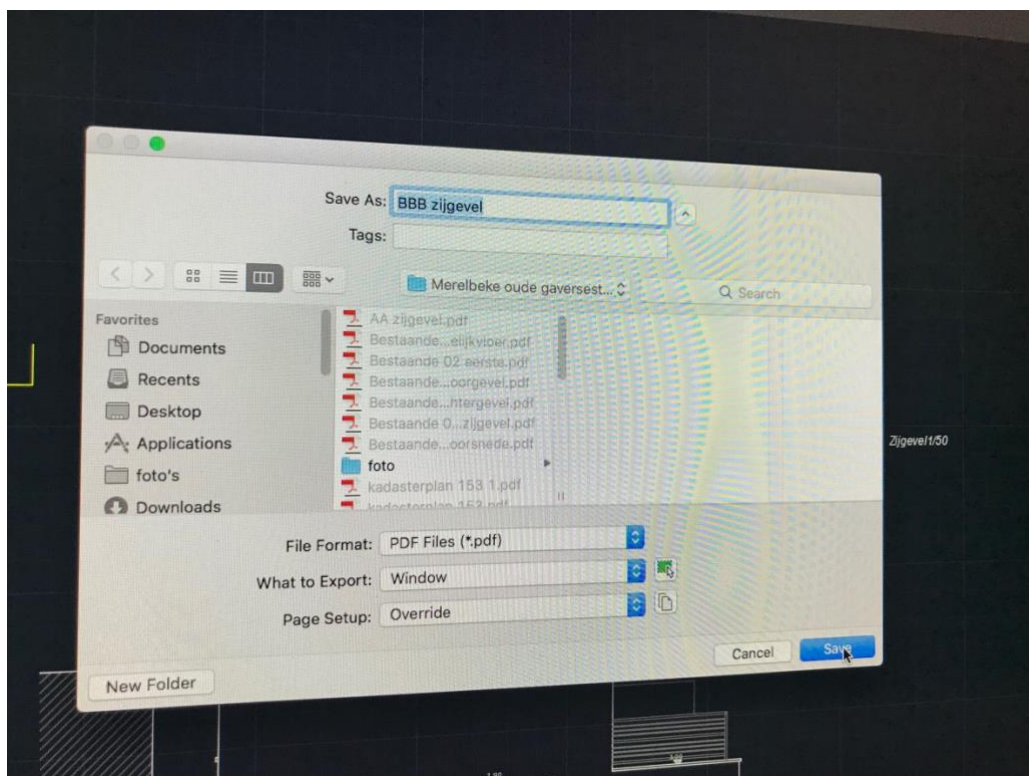
Now I using window



Window around my drawing....

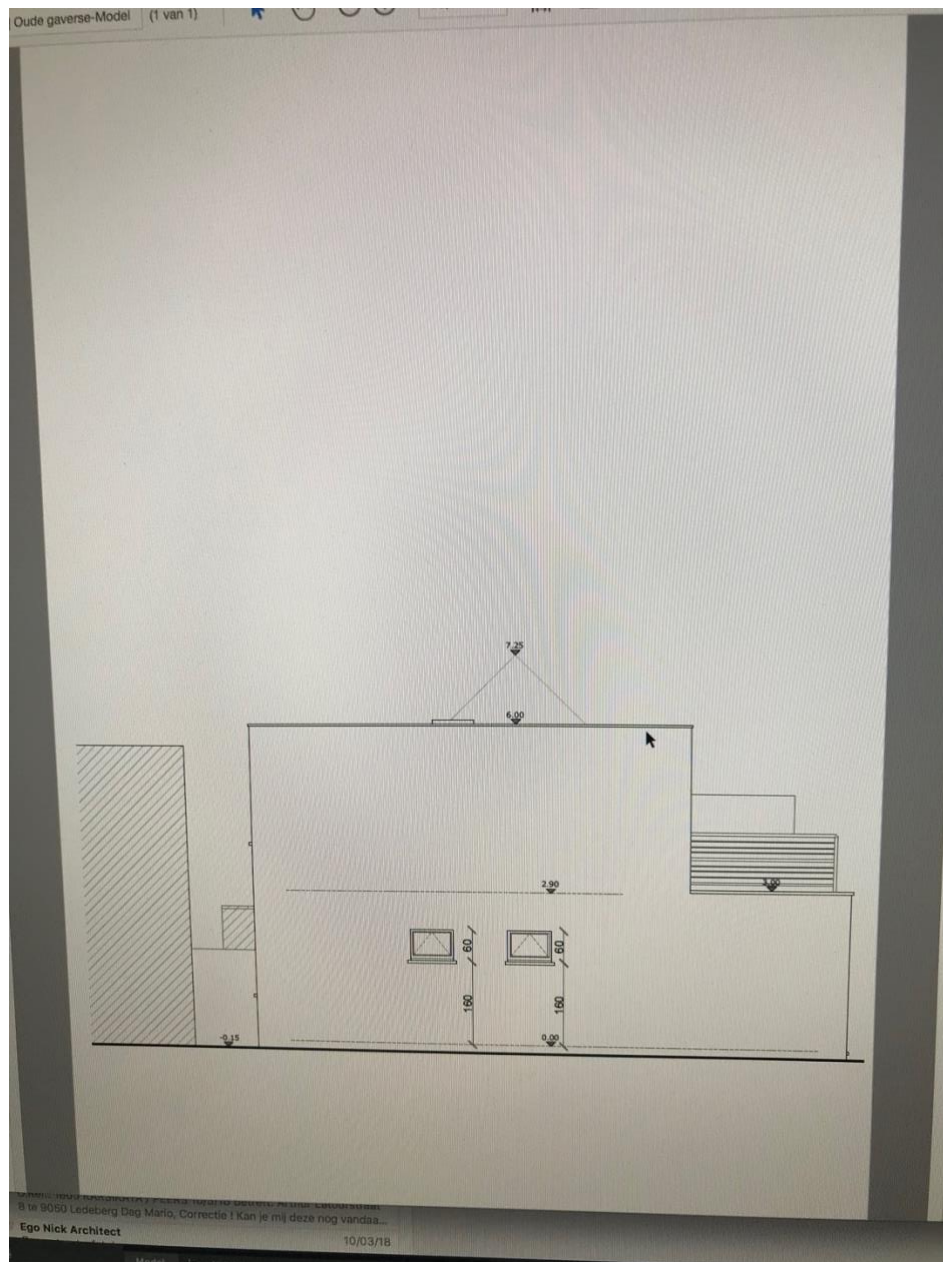


And now click on save.....





And pdf I get is ..... vertical!!!!



These problem I never get in older version!

Is there a problem in Autocad 2018 or I'm I doing something wrong?

Marioplans.