

PROVIDE WOOD BLOCKING IN WALL FOR ALL ITEMS THAT ARE SECURED TO THE WALL, INCLUDING BUT NOT LIMITED TO URINAL SCREENS, TOILET ACCESSORIES, ETC.

way too big

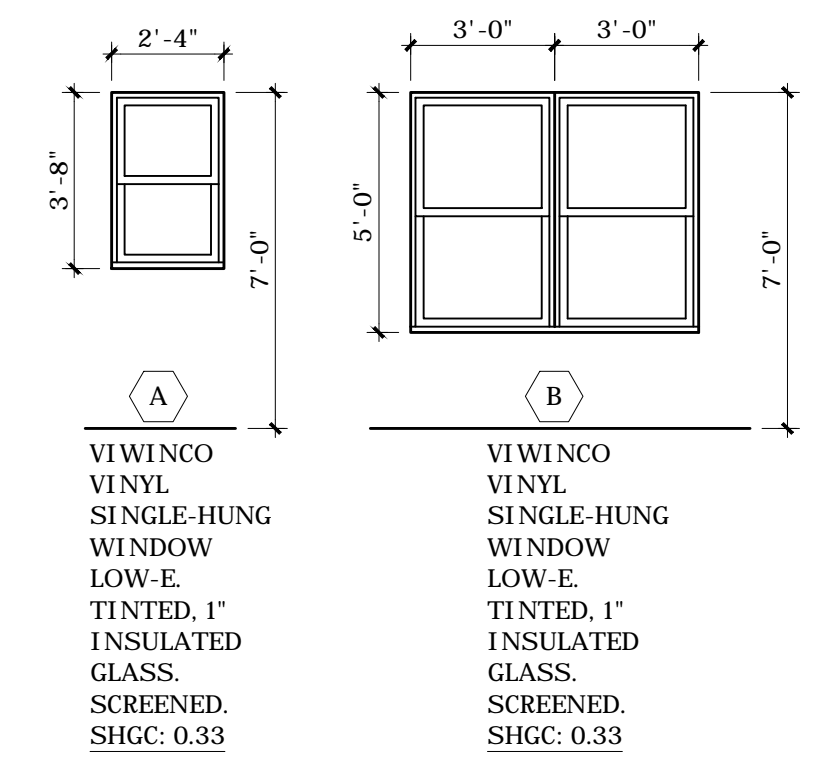
### 1 MOUNTING HEIGHTS FOR ACCESSIBLE FIXTURES

NO SCALE

- DOOR HARDWARE NOTES:**
- PANIC DEVICES FOR ALUMINUM DOORS TO BE CONCEALED RODS WITH CONCEALED HEAD AND FOOT BOLTS. FLUSH PANIC DEVICES TO BE INTEGRATED INTO DOORS.
  - COORDINATE PANIC BAR MOUNTING LOCATIONS WITH GLAZING CLEARANCES.
  - DOORS WIDER THAN 36" ARE TO HAVE 4 HINGES PER LEAF. DOORS 36" AND LESS ARE TO HAVE 3 HINGES PER LEAF.
  - INTERIOR DOORS THAT ARE MANUALLY LOCKED MUST PROVIDE FREE EGRESS FROM THE LOCKED ROOMS.
  - EXTERIOR DOORS TO HAVE NON-REMOVABLE PINS FOR HINGES EXPOSED TO THE EXTERIOR.
  - HINGES FOR ALL 3'-8" DOORS ARE TO BE THE TYPE THAT PROVIDE A CLEAR OPENING OF 41.5" WITH DOOR POSITIONED AT 90 DEGREES OPEN, MEASURED BETWEEN THE DOOR AND THE DOOR STOP ON THE DOOR FRAME.
  - REINFORCE ALL FRAMES FOR HARDWARE MOUNTING.
  - HANDLES, PULLS, LATCHES, LOCKS, AND OTHER OPERABLE PARTS ON ACCESSIBLE DOORS SHALL HAVE A SHAPE THAT IS EASY TO GRASP WITH ONE HAND AND DOES NOT REQUIRE TIGHT GRASPING, PINCHING, OR TWISTING OF THE WRIST TO OPERATE.
  - HARDWARE TO BE COMMERCIAL GRADE.
  - EXIT DEVICES ARE TO HAVE A "DOGGING" FEATURE THAT ALLOWS THE PUSH BAR TO BE HELD IN A RETRACTED POSITION.

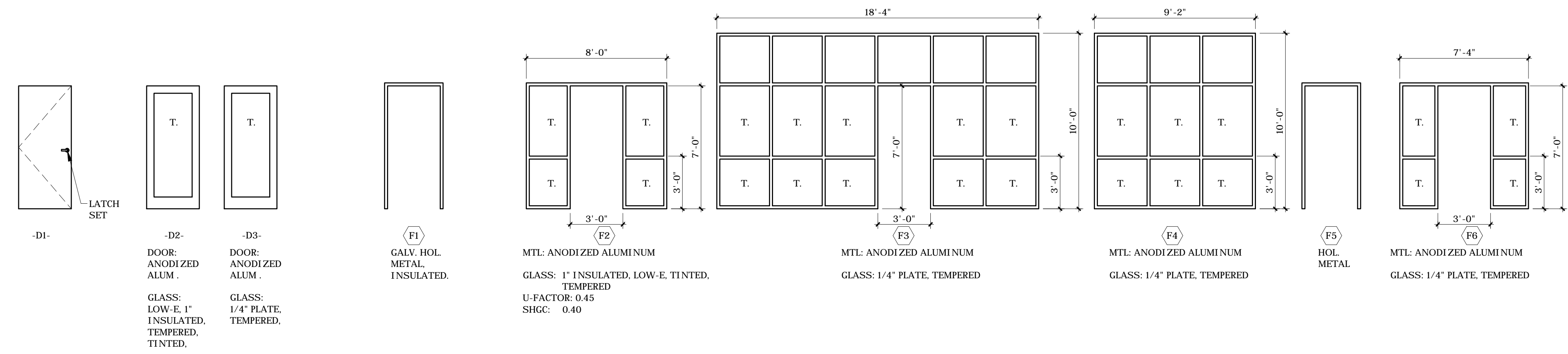
| DOOR |                        |      |               |        |          |      | FRAME    |        |        | FIRE | HARDWARE | DETAIL | REMARKS |
|------|------------------------|------|---------------|--------|----------|------|----------|--------|--------|------|----------|--------|---------|
| NO.  | SIZE                   | TYPE | MATERIAL      | FINISH | U-FACTOR | TYPE | MATERIAL | FINISH | RATING | SET  |          |        |         |
| 1    | 3'-0" x 7'-0" x 1 3/4" | D-2  | AL            | AN.    | 0.77     | F-2  | AL       | AN.    | 0      | 1    | -        | -      |         |
| 2    | 3'-0" x 7'-0" x 1 3/4" | D-1  | HM, INSULATED | PT     | 0.45     | F-1  | HM, GA   | PT     | 0      | 2    | -        | -      |         |
| 3    | 3'-0" x 7'-0" x 1 3/4" | D-1  | WD            | ST     | N/A      | F-5  | HM       | PT     | 0      | 3    | -        | -      |         |
| 4    | 3'-0" x 7'-0" x 1 3/4" | D-1  | WD            | ST     | N/A      | F-5  | HM       | PT     | 0      | 3    | -        | -      |         |
| 5    | 3'-0" x 7'-0" x 1 3/4" | D-1  | WD            | ST     | N/A      | F-5  | HM       | PT     | 0      | 4    | -        | -      |         |
| 6    | 3'-0" x 7'-0" x 1 3/4" | D-3  | AL            | AN     | N/A      | F-3  | AL       | AN     | 0      | 5    | -        | -      |         |
| 7    | 3'-0" x 7'-0" x 1 3/4" | D-1  | WD            | ST     | N/A      | F-5  | HM       | PT     | 0      | 6    | -        | -      |         |
| 8    | 3'-0" x 7'-0" x 1 3/4" | D-1  | WD            | ST     | N/A      | F-6  | AL       | AN     | 0      | 6    | -        | -      |         |

- HARDWARE SET #1**  
PIVOT HINGES  
KEYED DEADBOLT  
CLOSER  
EXT'R. PULL HANDLE  
INT'R. PUSH PLATE  
WEATHERSTRIPPED  
ACCESSIBLE THRESHOLD
- HARDWARE SET #2**  
1 1/2 PAIR HINGES, TAMPER  
PROOF  
LEVER HANDLE ENTRY  
LATCHSET  
CLOSER  
WEATHERSTRIPPED  
ACCESSIBLE THRESHOLD
- HARDWARE SET #3**  
1 1/2 PAIR HINGES  
LEVER HANDLE PRIVACY SET  
WALL STOP  
MUTES  
ACCESSIBLE THRESHOLD
- HARDWARE SET #4**  
1 1/2 PAIR HINGES  
LEVER HANDLE KEYED CLOSET  
SET  
WALL STOP  
MUTES  
ACCESSIBLE THRESHOLD
- HARDWARE SET #5**  
PIVOT HINGES  
PUSH PLATE  
PULL HANDLE  
WALL STOP  
MUTES  
ACCESSIBLE THRESHOLD
- HARDWARE SET #6**  
1 1/2 PAIR HINGES  
LEVER HANDLE KEYED LOCKSET  
WALL STOP  
MUTES  
ACCESSIBLE THRESHOLD
- ABBREVIATIONS:**  
AL ALUMINUM  
AN ANODIZED  
GA GALVANIZED  
HM HOLLOW METAL  
N/A NOT APPLICABLE  
PT PAINTED  
ST STAINED  
WD WOOD



- B-01 ITEM: MIRROR: 24" x 36"  
MFR: BOBRIK  
MODEL #: B-165 2436
  - B-02 ITEM: SOAP DISPENSER: WALL-MOUNT  
MFR: BOBRIK  
MODEL #: B-2111
  - B-03 ITEM: TOILET PAPER DISPENSER  
MFR: BOBRIK  
MODEL #: B-264
  - B-04 ITEM: PAPER TOWEL DISPENSER  
SURFACE MOUNTED  
MFR: BOBRIK  
MODEL #: B-262
  - B-05 ITEM: GRAB BAR 1-1/2" DIA. x 36"  
MFR: BOBRIK  
MODEL #: B-6806 x 36  
NOTE: STAINLESS STEEL FINISH
  - B-06 ITEM: GRAB BAR 1-1/2" DIA. x 42"  
MFR: BOBRIK  
MODEL #: B-6806 x 42  
NOTE: STAINLESS STEEL FINISH
  - B-07 ITEM: GRAB BAR 1-1/2" DIA. x 18"  
MFR: BOBRIK  
MODEL #: B-6806 x 18  
NOTE: STAINLESS STEEL FINISH
  - B-08 ITEM: GRAB BAR-SHOWER  
MFR: BOBRIK  
MODEL #: B-8861
  - B-09 ITEM: SHOWER CURTAIN ROD  
MFR: BOBRIK  
MODEL #: B-207 36  
NOTE: CURTAIN AND CLIPS BY OWNER
  - B-10 ITEM: SHOWER SEAT, FOLDING  
MFR: BOBRIK  
MODEL #: -
  - B-11 ITEM: GRAB BAR 1-1/2" DIA. x 24"  
MFR: BOBRIK  
MODEL #: B-6806 x 24  
NOTE: STAINLESS STEEL FINISH
  - B-12 ITEM: SHOWER CURTAIN ROD  
MFR: BOBRIK  
MODEL #: B-207 60  
NOTE: CURTAIN AND CLIPS BY OWNER
  - B-13 ITEM: UNDERSINK PIPING COVER  
MFR: TRUBRO  
MODEL #: LAV GUARD 2 E-2 SERIES
- NOTE: SIMILAR ITEMS BY ANOTHER MANUFACTURER MAY BE SUBSTITUTED.

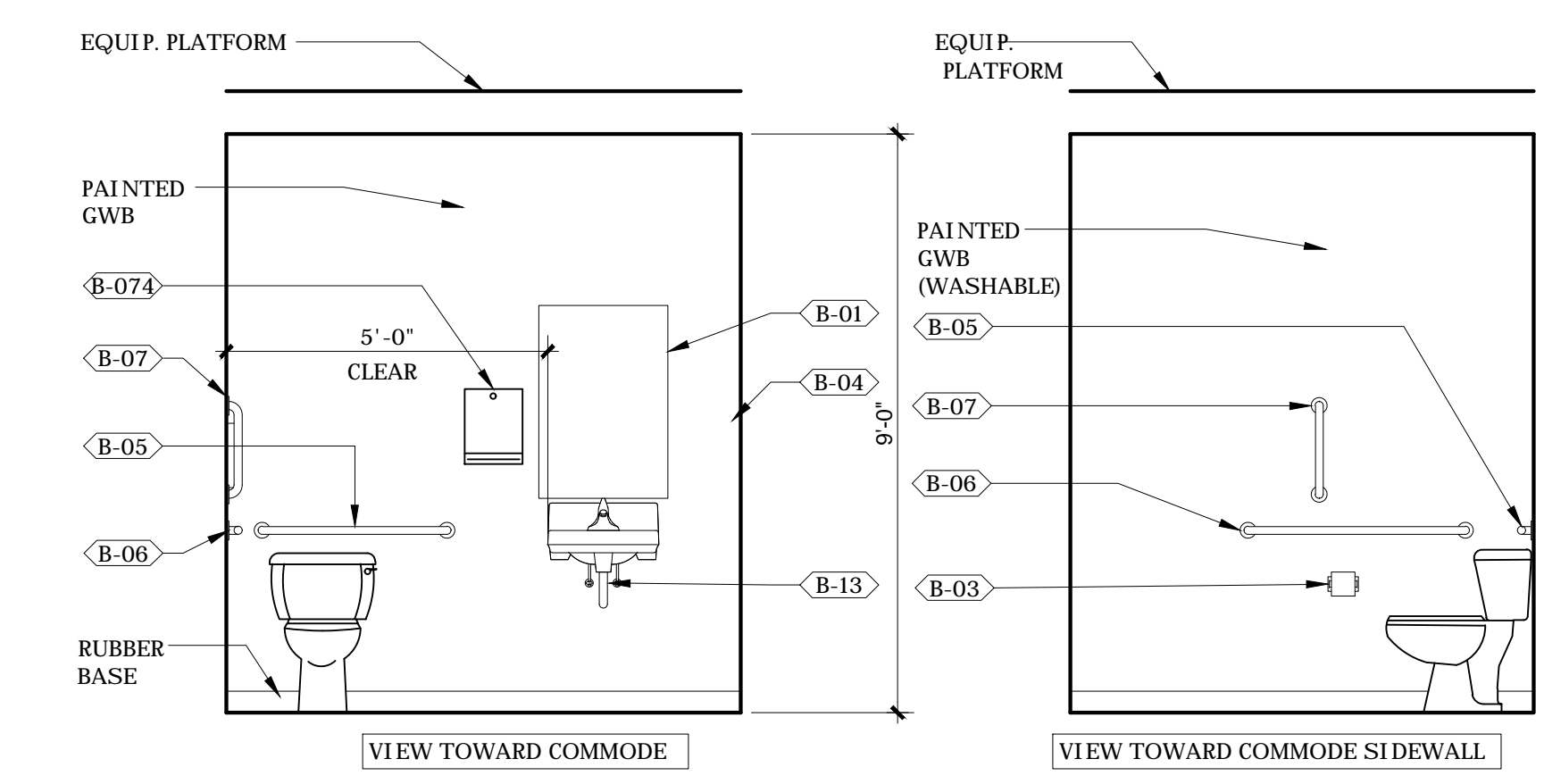
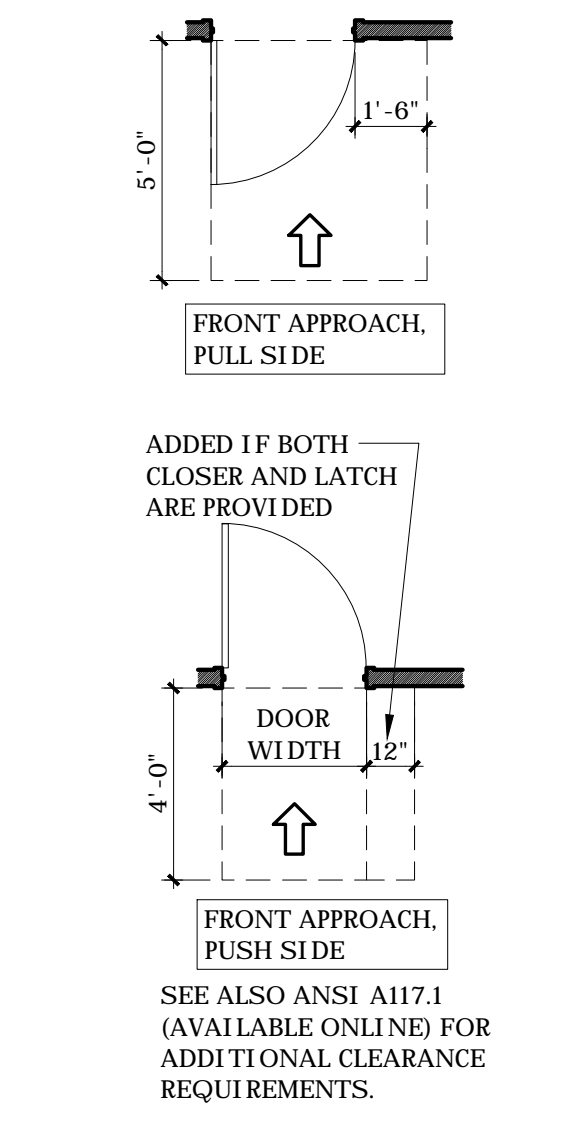
- DOOR GLAZING NOTES:**
- DOORS WITH VISION PANELS ARE REQUIRED TO HAVE IMPACT RATED GLASS COMPLYING WITH CPSC 16 CFR 1201 PER NCSBC TABLE 2406.2(1).
  - GLASS IN FIRE RATED DOORS MUST ALSO BE FIRE RATED TO THE SAME LEVEL AS THE DOORS.
  - BOTH IMPACT RATING AND FIRE RATING MUST BE PERMANENTLY LABELED ON, OR ETCHED INTO, THE GLASS.



### 6 DOORS, STOREFRONT, + WINDOWS

1/4"=1'-0"

- WINDOW NOTES:**
- VERIFY ROUGH OPENING WITH MANUFACTURER.



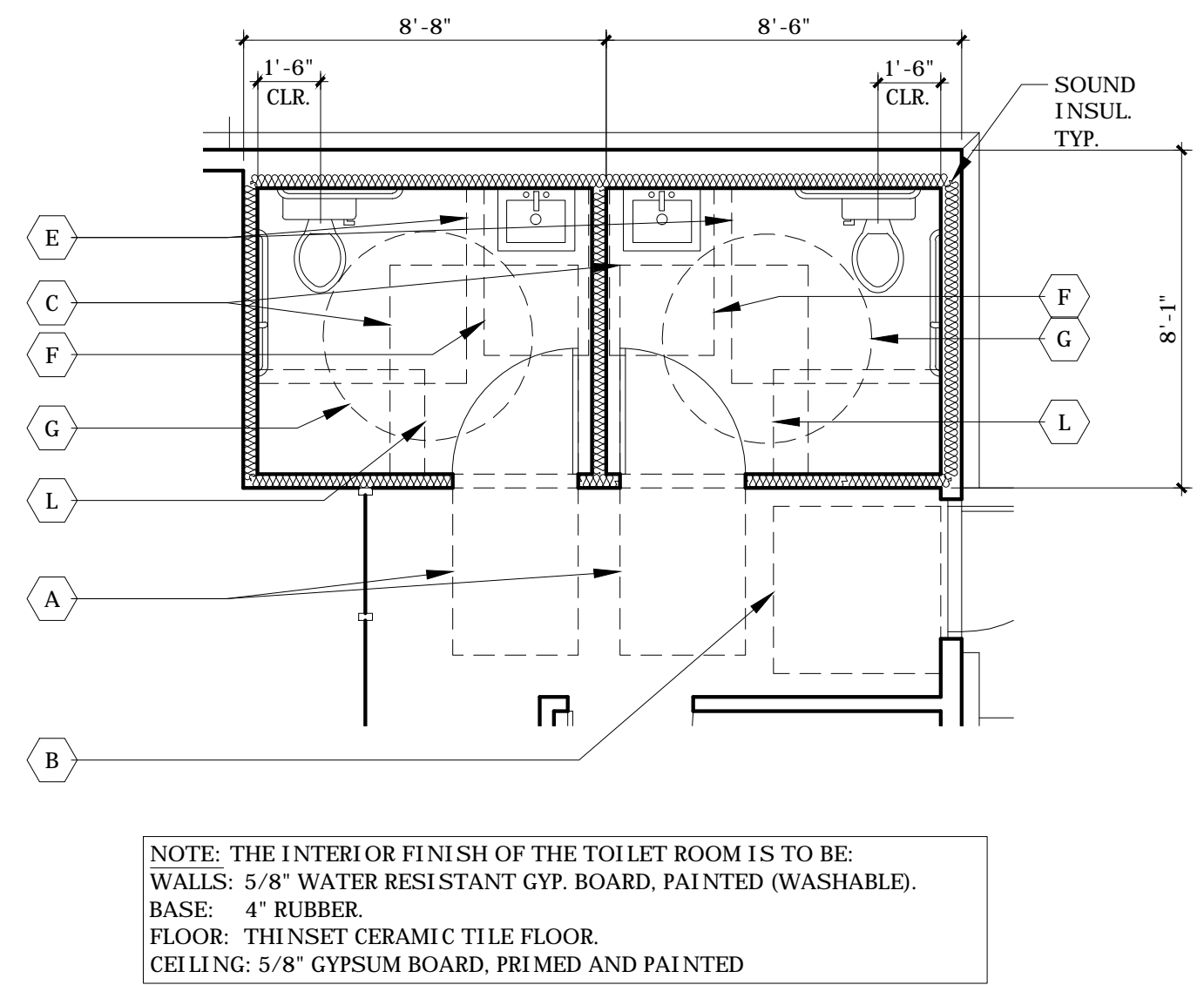
### 5 TYPICAL TOILET ELEVATIONS

3/8"=1'-0"

1. SEE "MOUNTING HEIGHTS FOR ACCESSIBLE FIXTURES" DRAWING THIS SHEET FOR ACCESSIBLE CLEARANCES AND HEIGHTS

### 2 TOILET ACCESSORIES

NO SCALE



NOTE: THE INTERIOR FINISH OF THE TOILET ROOM IS TO BE:  
WALLS: 5/8" WATER RESISTANT GYP. BOARD, PAINTED (WASHABLE).  
BASE: 4" RUBBER.  
FLOOR: THINSET CERAMIC TILE FLOOR.  
CEILING: 5/8" GYPSUM BOARD, PRIME AND PAINTED

### 4 TOILET PLAN

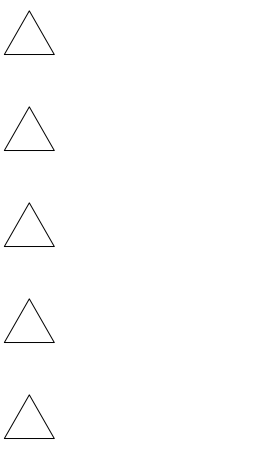
3/8"=1'-0"

### 3 FLOOR CLEARANCES

NO SCALE

- WIDTHS ARE PARALLEL TO DOOR OPENING
- A 3'-0" W. x 4'-0" D. DOOR CLEARANCE
  - B 4'-0" W. x 4'-0" D. DOOR CLEARANCE
  - C 4'-6" W. x 5'-0" D. DOOR CLEARANCE
  - D 5'-0" W. x 3'-6" D. DOOR CLEARANCE
  - E 5'-0" W. x 4'-8" D. COMMODE CLEARANCE
  - F 2'-6" W. x 4'-0" D. LAV. CLEARANCE
  - G 60" DIA. TURNING SPACE
  - H T-SHAPED TURNING SPACE
  - J 3'-0" x 4'-0" SHOWER CLEARANCE
  - K 5'-0" x 2'-6" SHOWER CLEARANCE
  - L 2'-6" x 4'-0" CLEAR FLOOR SPACE

10 April 2018  
REVISIONS  
no. date



Toilet Plan  
Accessibility  
Doors + Windows  
SCALE AS NOTED

ARCH  
A3