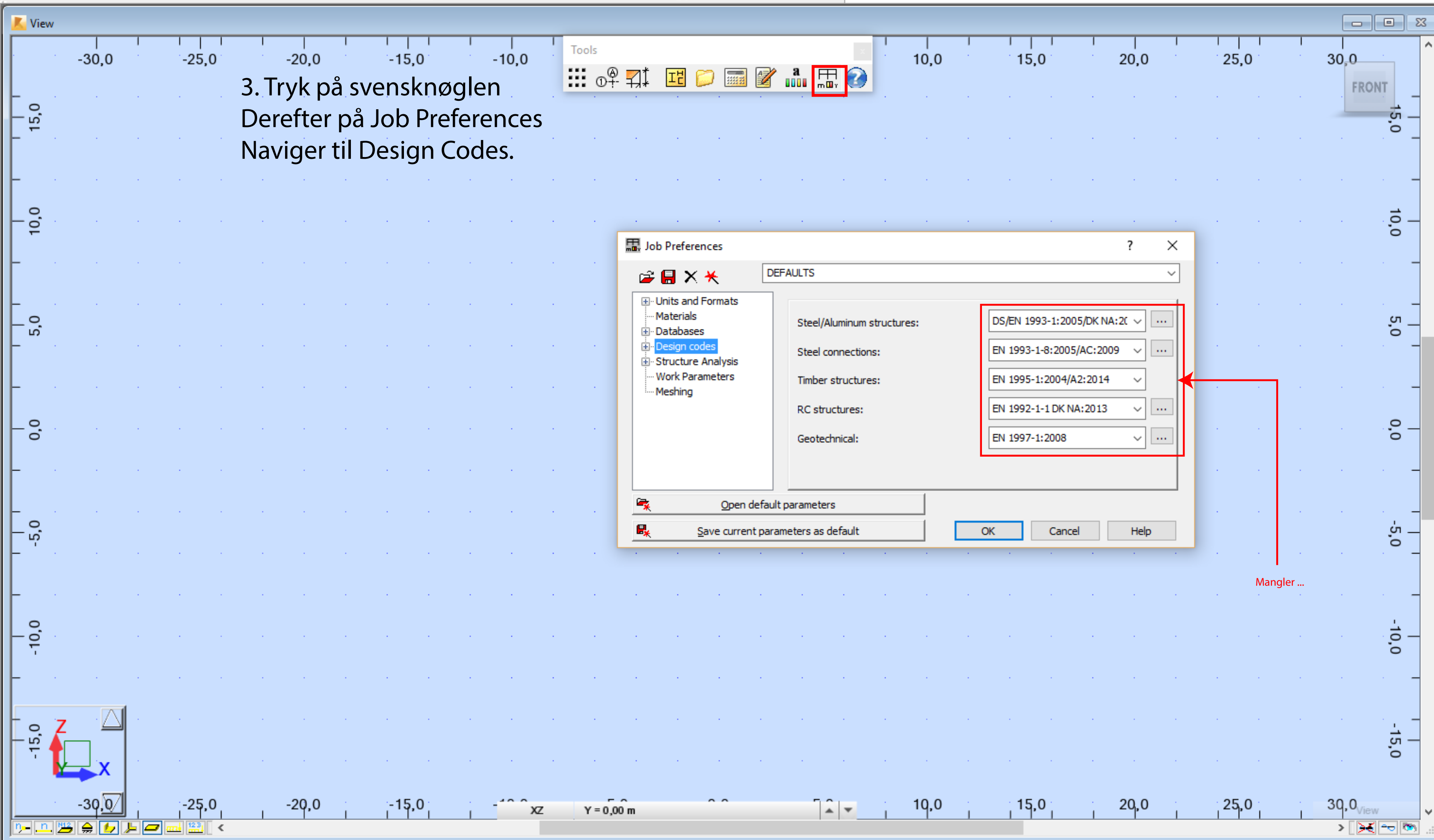


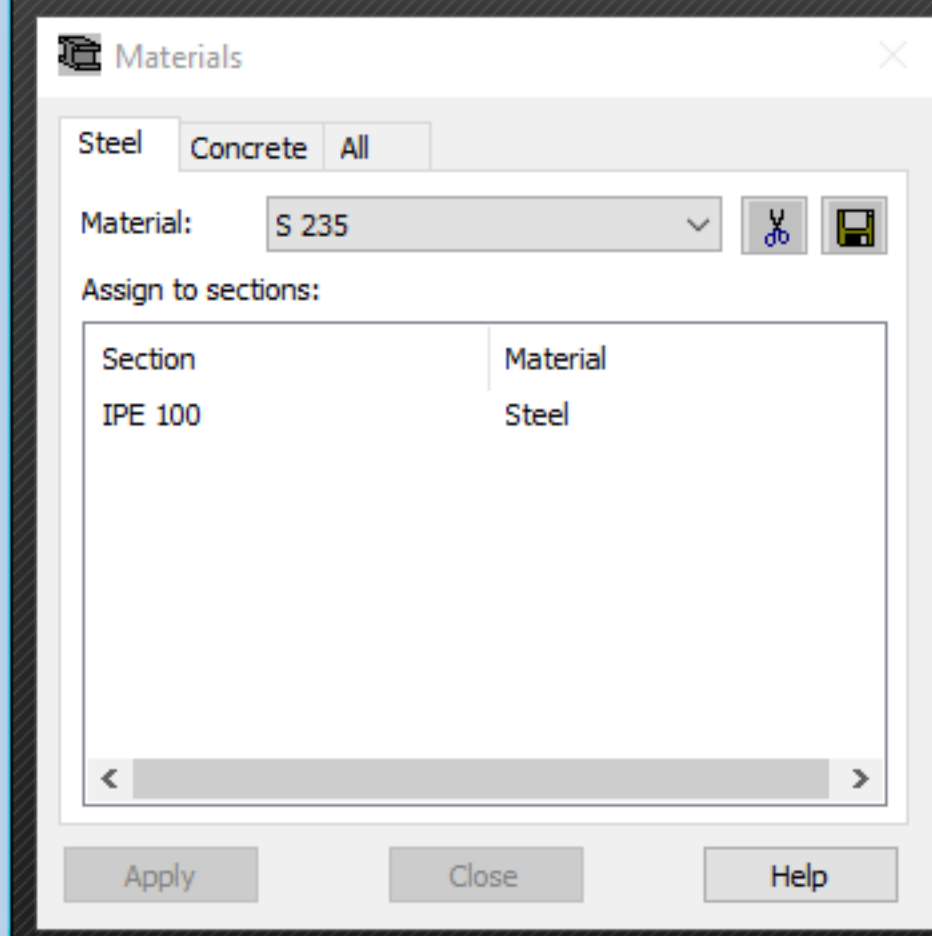
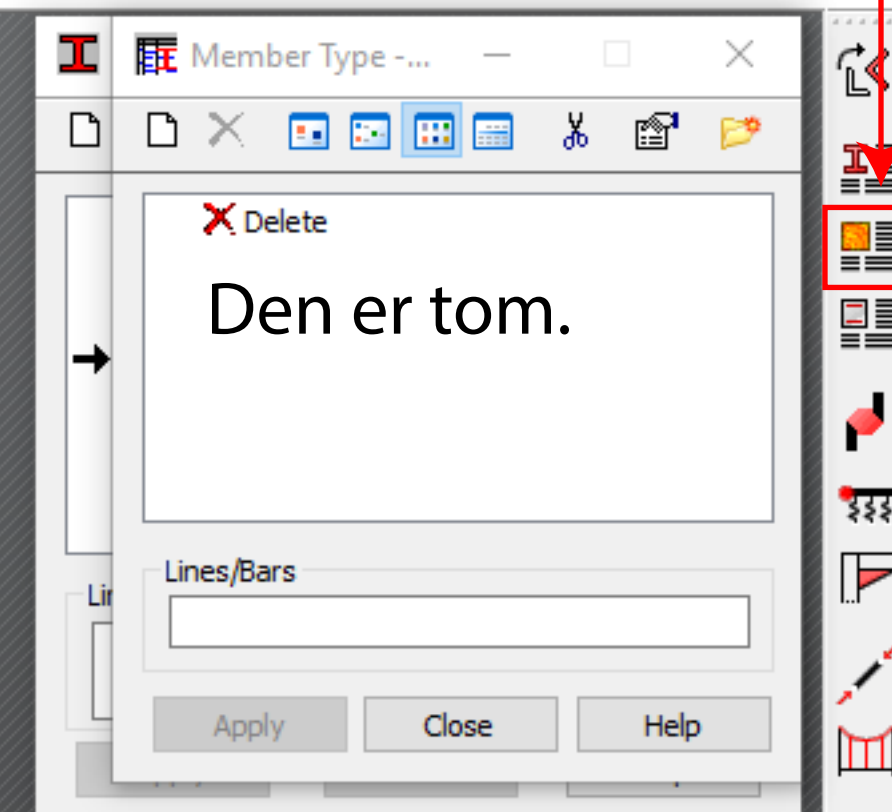


1. Vælg Sections&Materials

2. Tryk på Timber Member Type

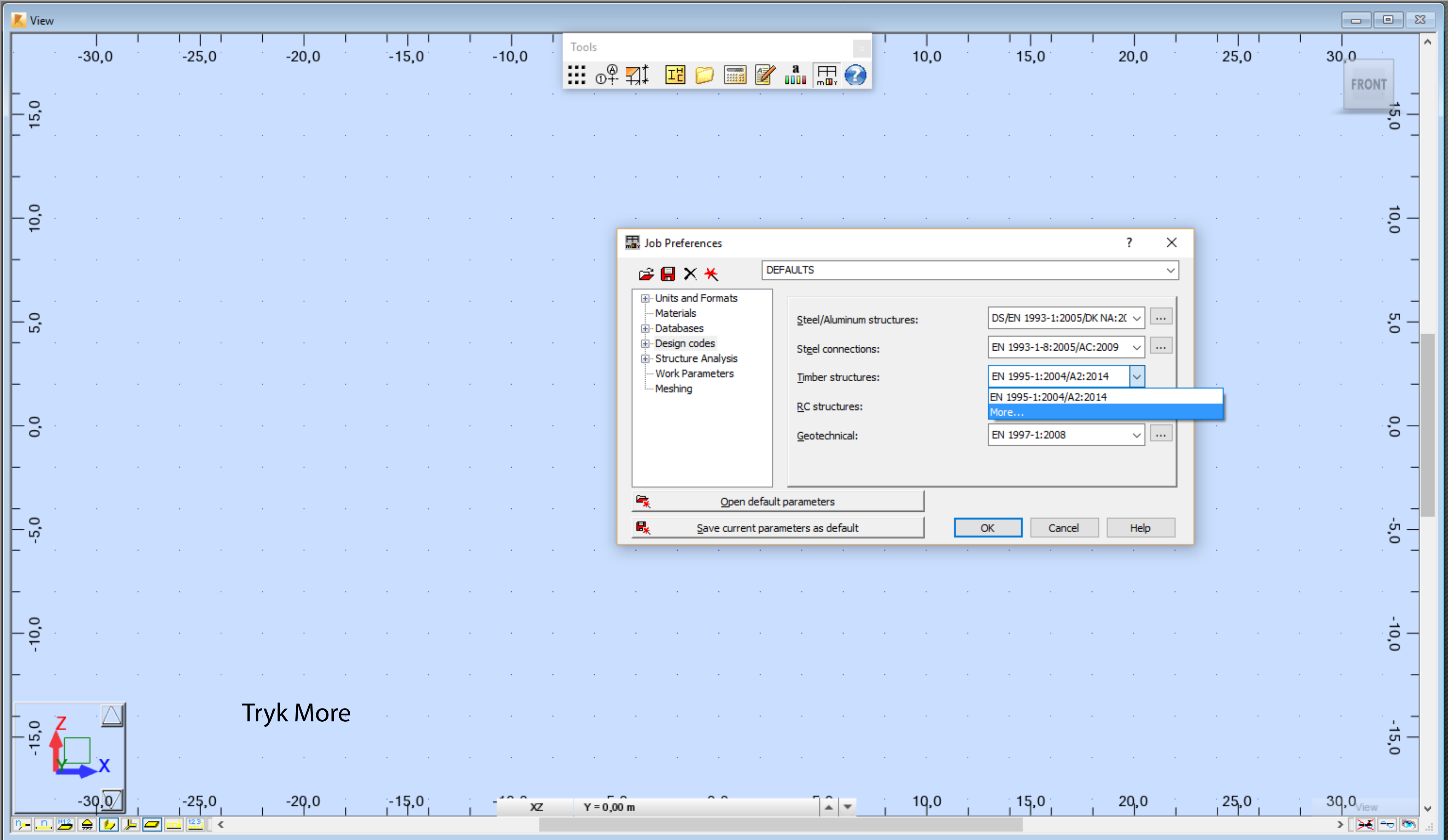
3. Tryk på svensknøglen
Derefter på Job Preferences
Naviger til Design Codes.

Mangler ...



File Edit View Geometry Loads Analysis Results Design Tools Add-Ins Window Help Community

Sections&Materials



Job Preferences

DEFAULTS

- Units and Formats
- Materials
- Databases
- Design codes
- Structure Analysis
- Work Parameters
- Meshing

Steel/Aluminum structures: DS/EN 1993-1-2:2005/DK NA:2005

Steel connections: EN 1993-1-8:2005/AC:2009

Timber structures: EN 1995-1-2:2004/A2:2014

RC structures: EN 1995-1-2:2004/A2:2014

Geotechnical: EN 1997-1:2008

Buttons: Open default parameters, Save current parameters as default, OK, Cancel, Help

Member Type

Delete

Lines/Bars

Buttons: Apply, Close, Help

Materials

Steel Concrete All

Material: S 235

Assign to sections:

Section	Material
IPE 100	Steel

Buttons: Apply, Close, Help

Tryk More

Configuration of Code List

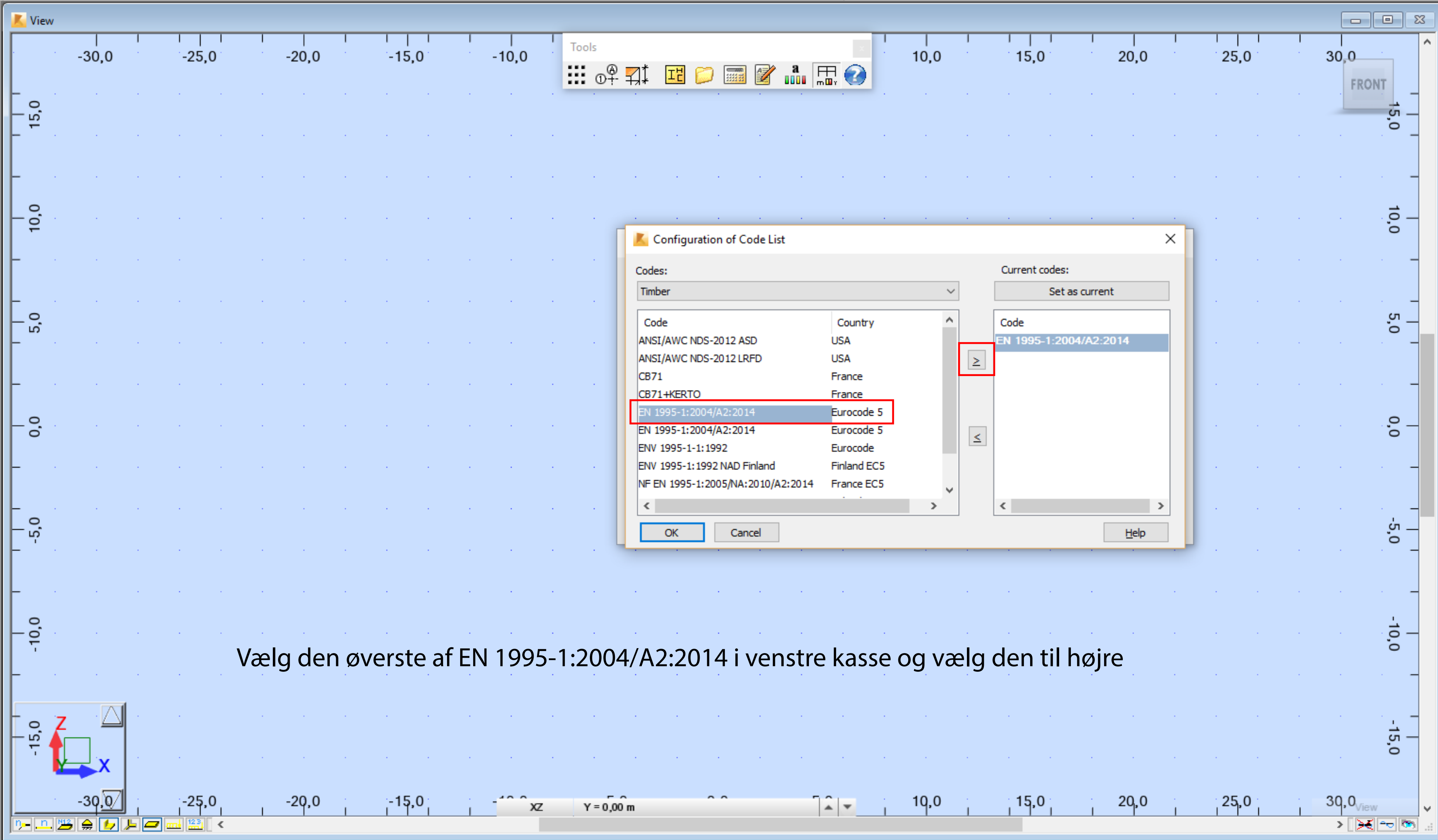
Codes: Timber

Code	Country
ANSI/AWC NDS-2012 ASD	USA
ANSI/AWC NDS-2012 LRFD	USA
CB71	France
CB71+KERTO	France
EN 1995-1:2004/A2:2014	Eurocode 5
EN 1995-1:2004/A2:2014	Eurocode 5
ENV 1995-1-1:1992	Eurocode
ENV 1995-1:1992 NAD Finland	Finland EC5
NF EN 1995-1:2005/NA:2010/A2:2014	France EC5

Current codes: EN 1995-1:2004/A2:2014

Buttons: OK, Cancel, Help

Fjern den der allerede er valgt ved at klikke her



Configuration of Code List

Codes: Timber

Code	Country
ANSI/AWC NDS-2012 ASD	USA
ANSI/AWC NDS-2012 LRFD	USA
CB71	France
CB71+KERTO	France
EN 1995-1:2004/A2:2014	Eurocode 5
EN 1995-1:2004/A2:2014	Eurocode 5
ENV 1995-1-1:1992	Eurocode
ENV 1995-1:1992 NAD Finland	Finland EC5
NF EN 1995-1:2005/NA:2010/A2:2014	France EC5

Current codes: EN 1995-1:2004/A2:2014

Buttons: OK, Cancel, Help, Set as current

Vælg den øverste af EN 1995-1:2004/A2:2014 i venstre kasse og vælg den til højre

Member Type - ...

Delete

Lines/Bars

Buttons: Apply, Close, Help

Materials

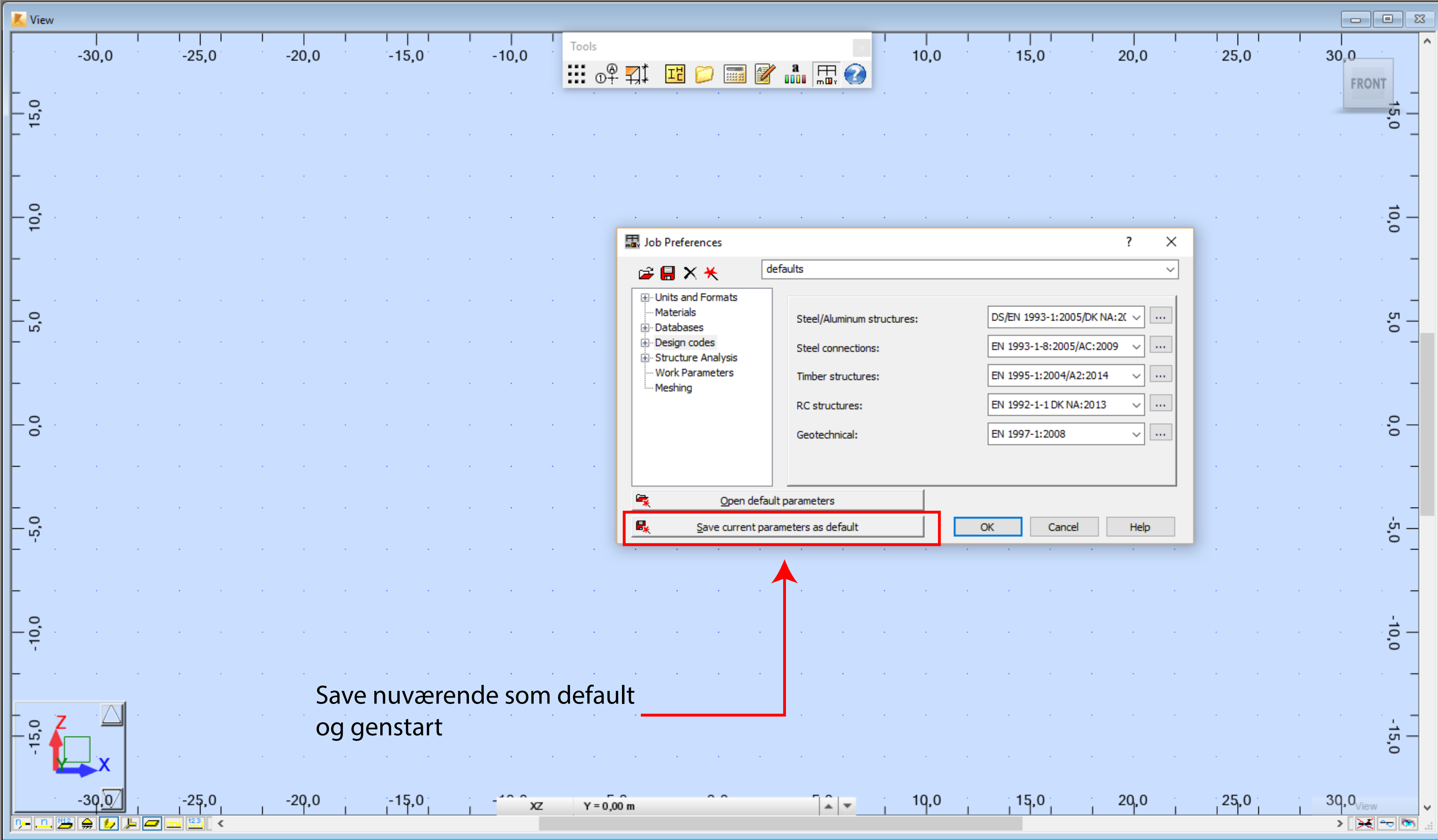
Steel Concrete All

Material: S 235

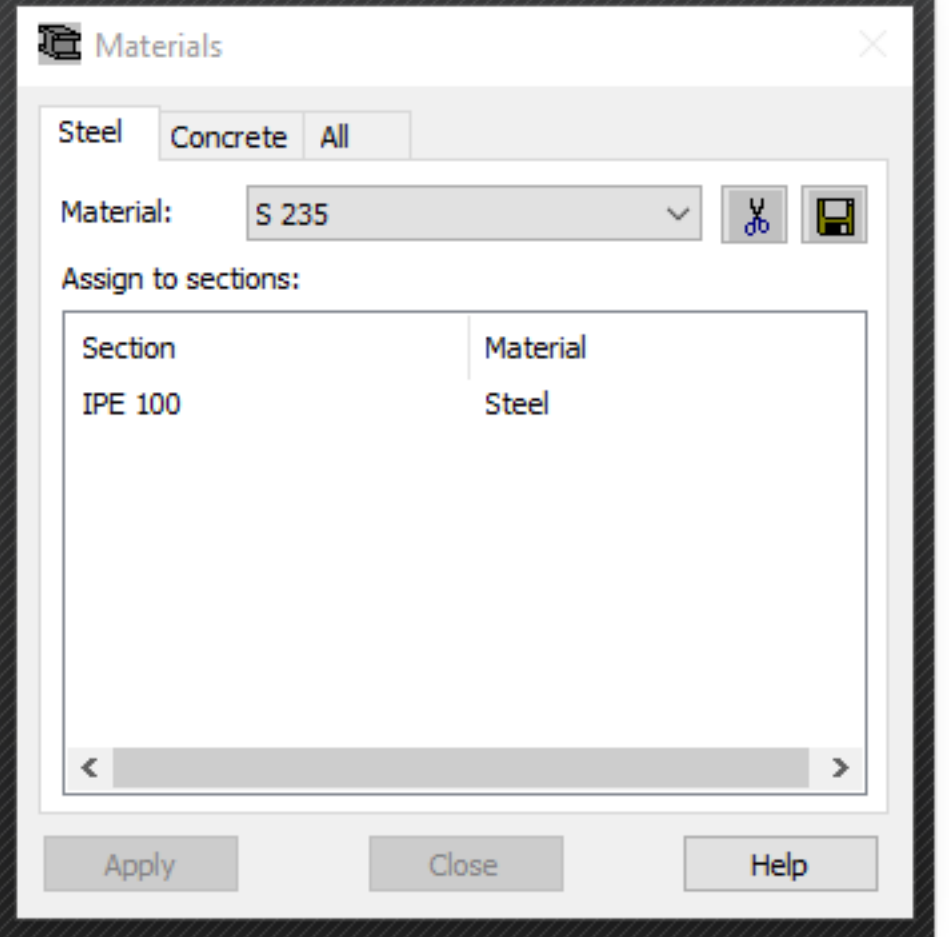
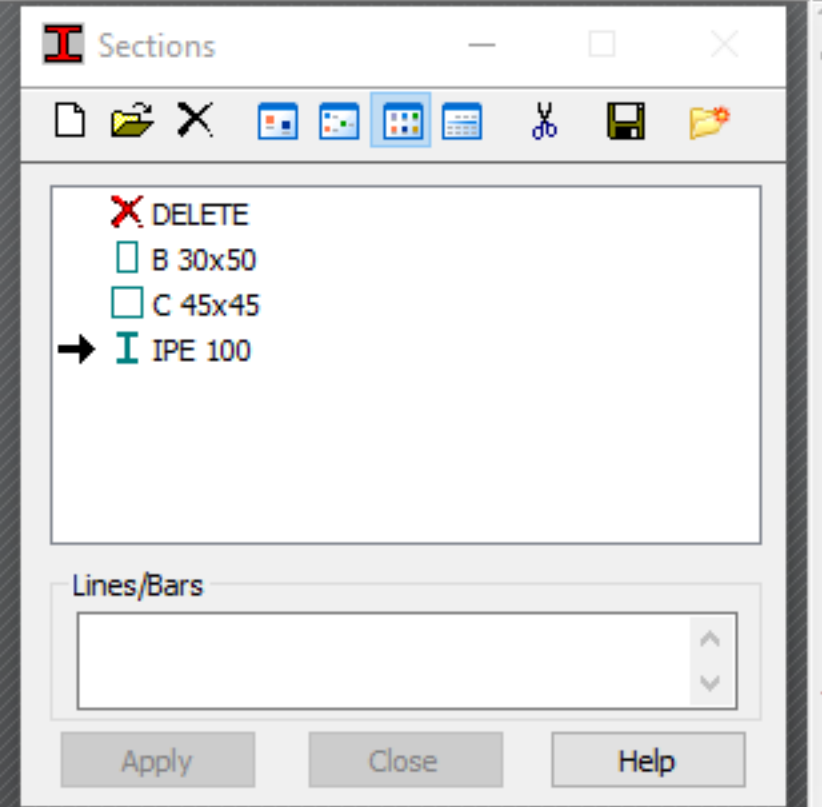
Assign to sections:

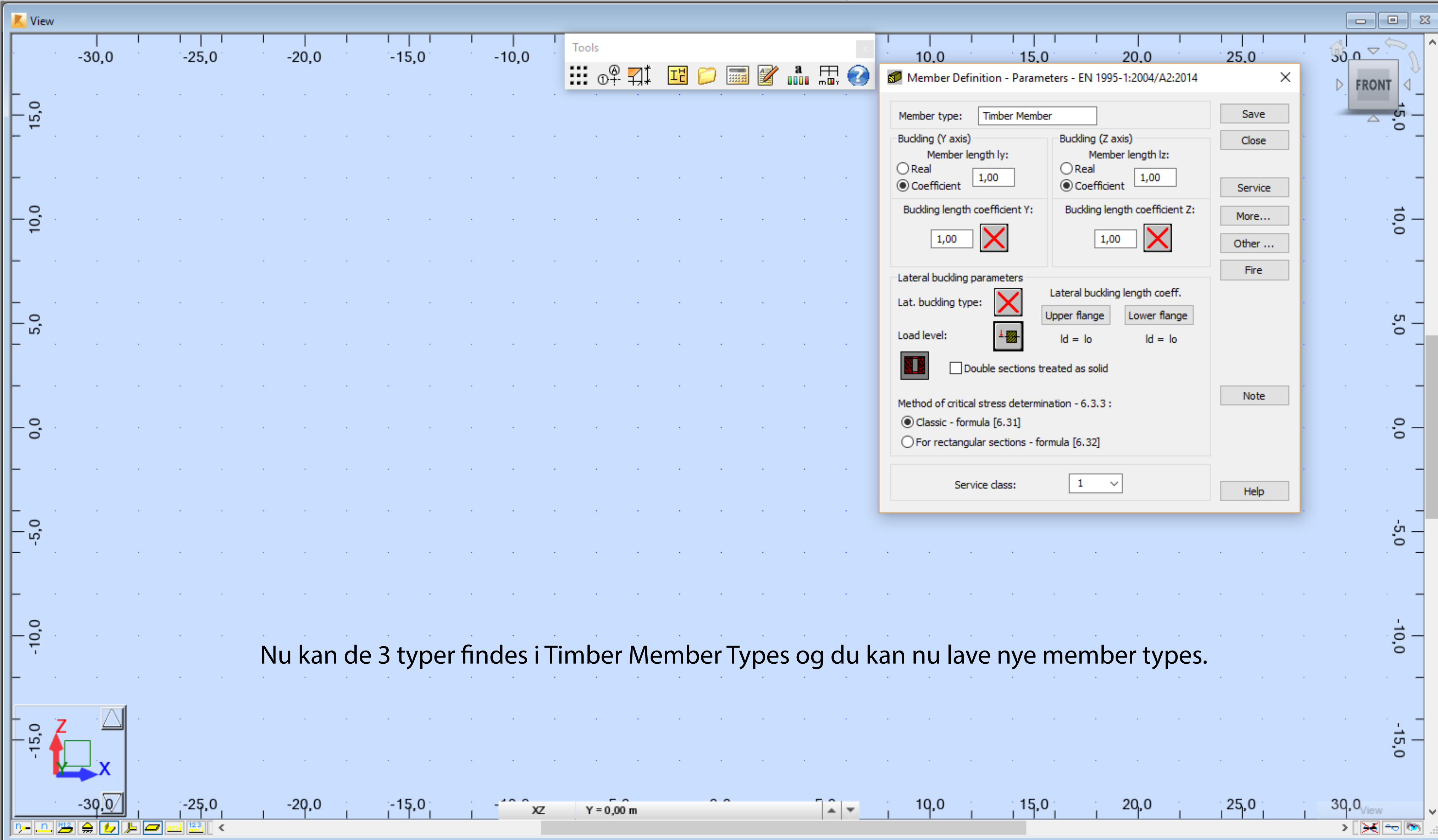
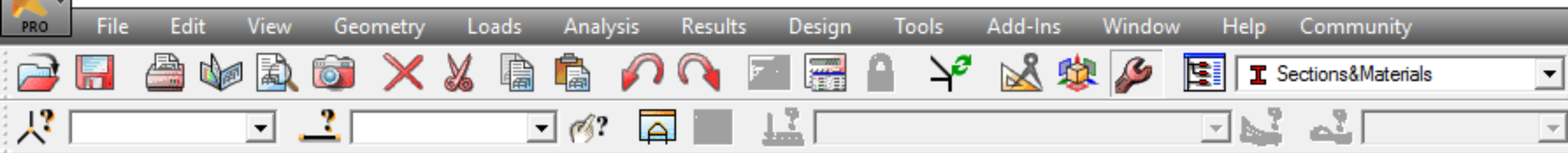
Section	Material
IPE 100	Steel

Buttons: Apply, Close, Help



Save nuværende som default og genstart





Nu kan de 3 typer findes i Timber Member Types og du kan nu lave nye member types.

