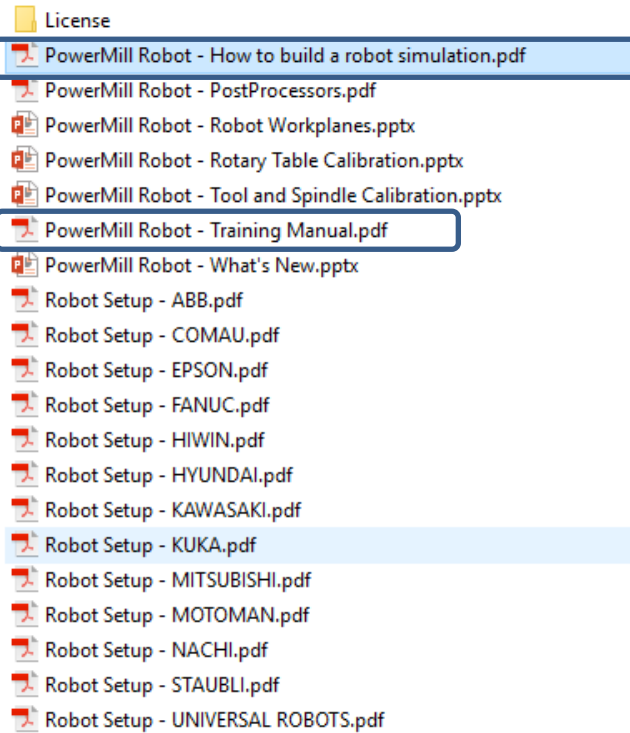


PowerMILL Robot

- Open Help Documentation-

This document describes how to open the Help documentation that is installed with each Plugin version.

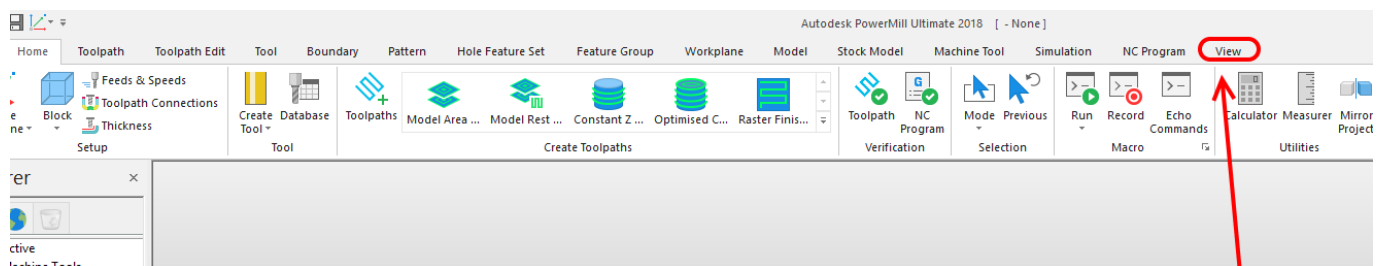


These documents are the basics to get started on PowerMILL Robot.

1. Open PowerMILL Robot

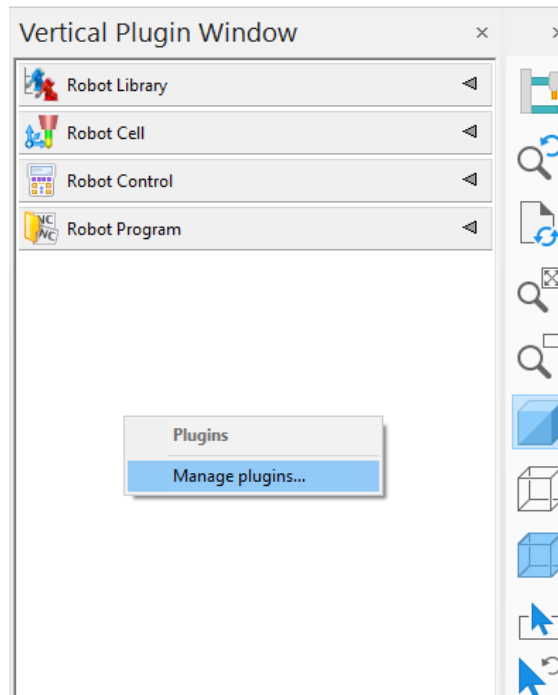
When you first launch PowerMILL, PowerMILL will take a few seconds to recognize and register the plugin.

If the Plugin is not visible, on the Ribbon bar go to , **View>Toolbars>Vertical Plugin Window**



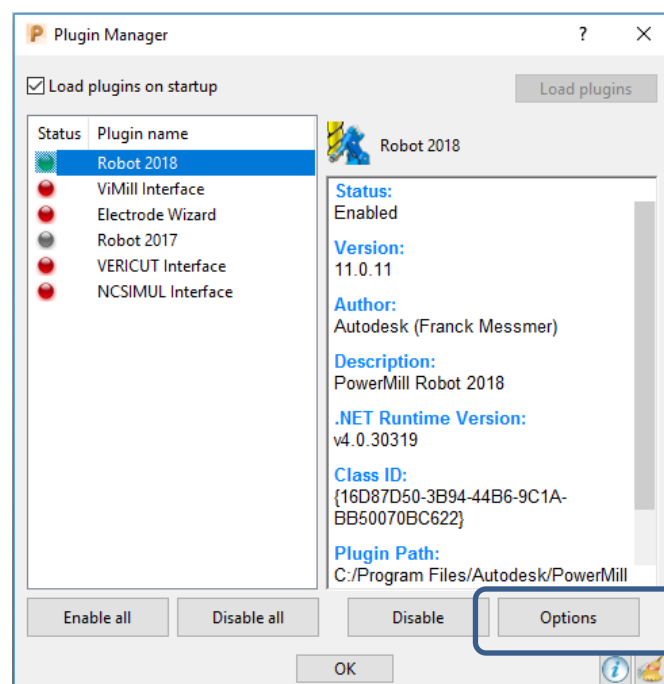
3.0 Open Help Folder

To open the help folder, close all tabs, and right click inside the Vertical Plugin Window
Select Manage Plugins, that will bring up the plugin manager.



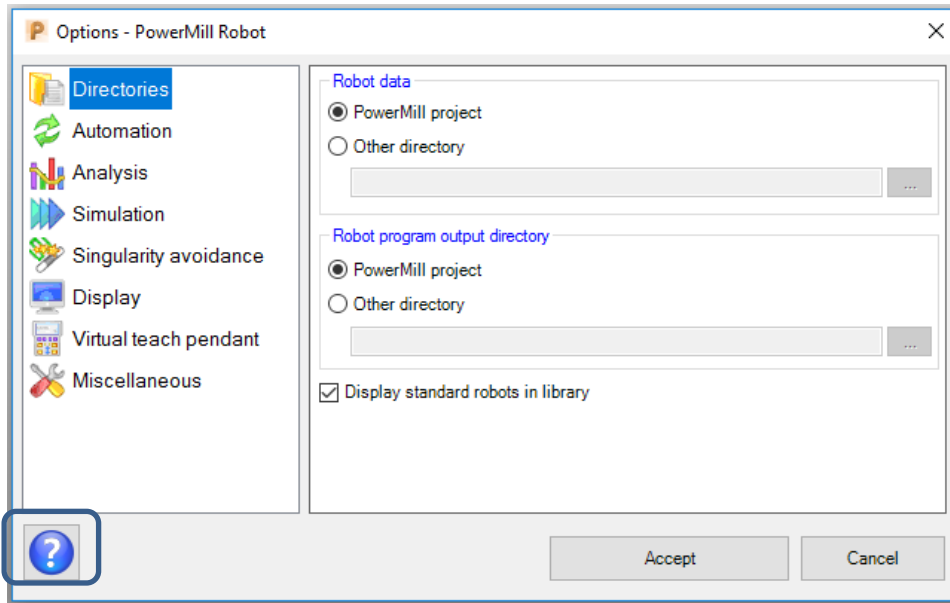
Once the plugin manager is open, select the Robot plugin and press options.

This will open the



documentation.

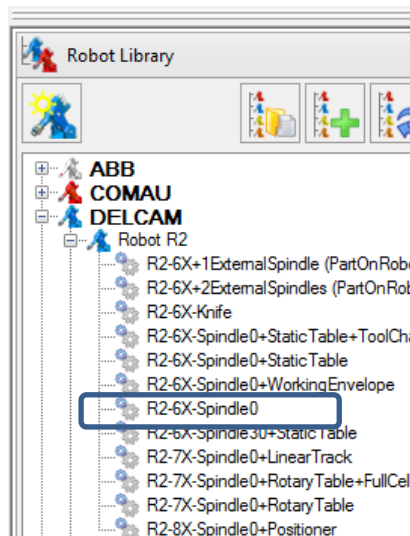
From here click on the icon with the blue question mark.



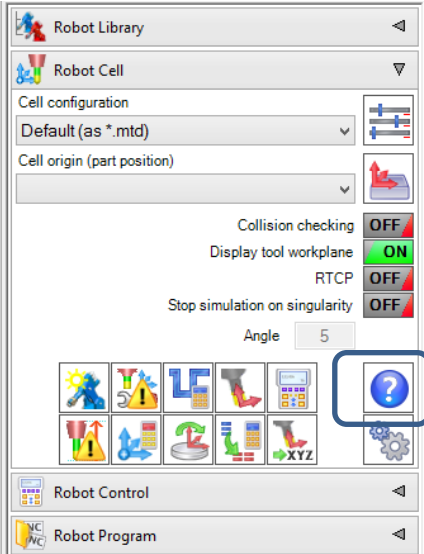
This will open the folder containing the documentation.

3.1 Open Help Folder – Robot Cell tab

Once the plugin is open, open the **Robot Library** tab and select any robot from the library, by browsing the tree and double clicking on the robot link with a grey/blue gear symbol.



Once the robot is selected it will become visible in PowerMILL, please open the second tab **Robot Cell**. From here click on the icon with the blue question mark.



This will open the documentation.