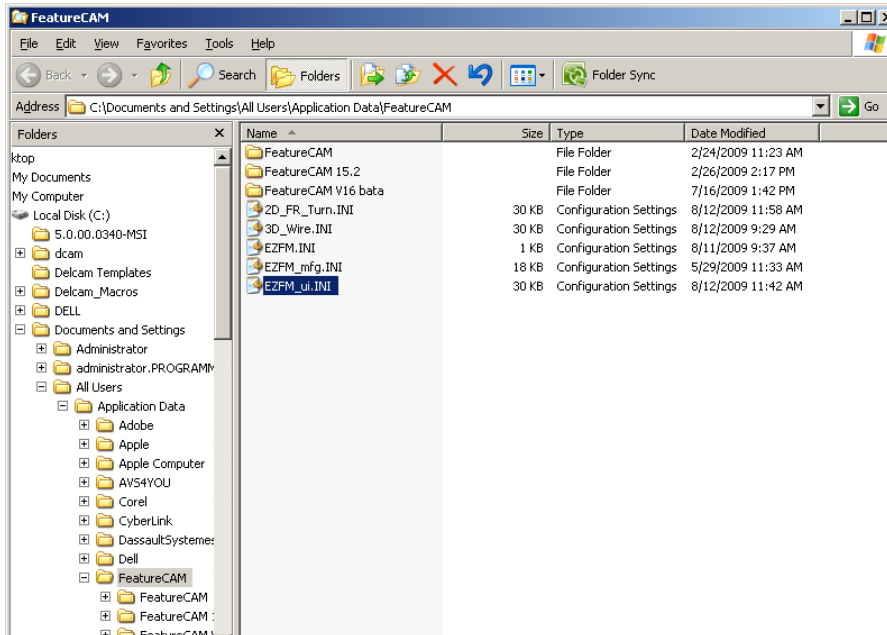


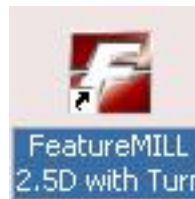
FeatureCAM Options Shortcut Icons

7. Select Browse ezfm.ini folder
8. Right click on the file named EZFM_ui.INI and select copy
9. Paste it in the same folder and rename it to make it easier to locate later. I renamed mine 2D_FR_Turn.INI because I will use it for FeatureMILL 2.5D, Feature Recognition, and FeatureTURN



Step 2:

1. On the Desktop of the workstation, create a new FeatureCAM shortcut and rename it to represent the license(s) that it will activate



2. Right click on the icon and select Properties
3. Select the Shortcut tab and in the Target section you will see the target address below

"C:\Program Files\FeatureCAM \Program\ezfm.exe"

4. Add the following to the address with a space between the parenthesis at the end of the address above and the beginning of the additional address below

"-UC:\Documents and Settings\All Users\Application Data\FeatureCAM\2D_FR_Turn.INI"

FeatureCAM Options Shortcut Icons

The target address should now read

Blank space here

"C:\Program Files\FeatureCAM\Program\Ezfm.exe" "-UC:\Documents and Settings\All Users\Application Data\FeatureCAM\2D_FR_Turn.INI"

Note:

"C:\Program Files\Autodesk\FeatureCAM 2018\program\ezfm.exe" "-UC:\documents and settings\all users\application data\featurecam\WHATEVER.INI" -license Premium

If you activate any other licenses after opening FeatureCAM with the shortcut you created, be sure to deactivate them before closing FeatureCAM. The INI file keeps track of any changes to the system so any changes to the license options will be saved when you exit.

BLANK SPACES

Repeat the process above to create other shortcuts with different licensing options.

Post Processor And Tool Crib

You can also use this process to have a specific post and tool crib launch together. To do this:

1. Open FeatureCAM and set the post and tool crib you want
2. Follow steps 5 thru 9 from pages 1 and 2
3. On the Desktop of the workstation, create a new FeatureCAM shortcut and rename it to represent the machine the post is for



4. Right click on the icon and select Properties
5. Select the Shortcut tab and in the Target section you will see the target address below

"C:\Program Files\FeatureCAM \Program\ezfm.exe"

6. Add the following to the address with a space between the parenthesis at the end of the address above and the beginning of the additional address below

"-UC:\Documents and Settings\All Users\Application Data\FeatureCAM\haas.INI"

The target address should now read

Blank space here

"C:\Program Files\FeatureCAM\Program\Ezfm.exe" "-UC:\Documents and Settings\All Users\Application Data\FeatureCAM\haas.INI"

Note:

If you change the post or tool crib, be sure to reset them before closing FeatureCAM. The INI file keeps track of any changes to the system so any changes to the post or tool crib options will be saved when you exit.

Repeat the process above to create other shortcuts with different options.