

Select a Task...

3D Settings

Adjust image settings with preview

Manage 3D settings

Set PhysX Configuration

Display

Change resolution

Adjust desktop color settings

Rotate display

View HDCP status

Set up digital audio

Adjust desktop size and position

Set up multiple displays

Video

Adjust video color settings

Adjust video image settings

Workstation

View system topology

Set up Mosaic

select this feature
first

Adjust Image Settings with Preview

This page allows you to preview changes you make to the image and rendering settings for hardware-accelerated 3D applications that utilize Direct3D or OpenGL.

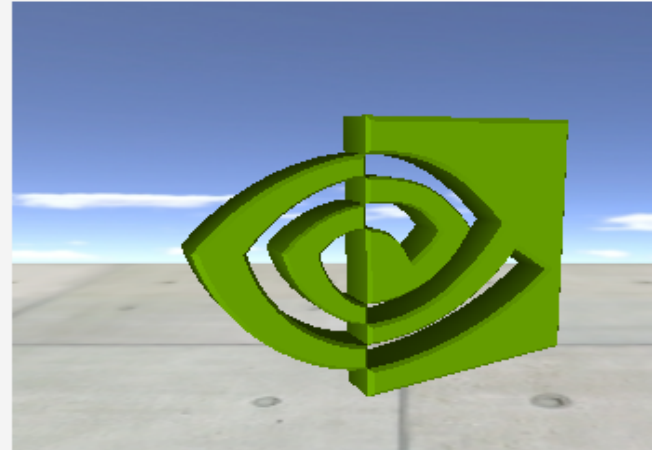
Performance:



Quality:



Preview:



What do I look for?

Moving towards the Performance side will increase frame rate, but curved lines will appear jagged.

Moving towards the Quality side will improve the smoothness you can see on curved lines.

- ☐ Let the 3D application decide
- ☐ Use the advanced 3D image settings [Take me there](#)
- ☒ Use my preference emphasizing: **Performance**

Performance

set to
them

Description:

Typical usage scenarios:

