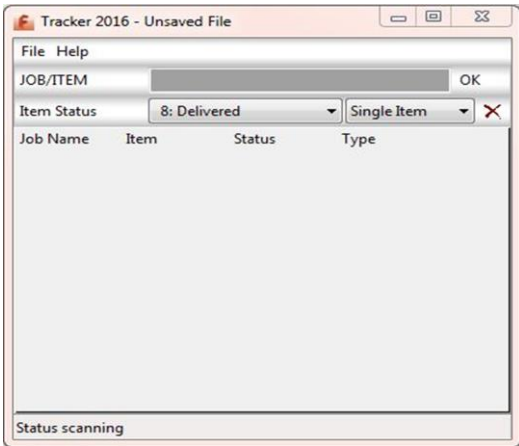


Installation & Configuration of Tracker

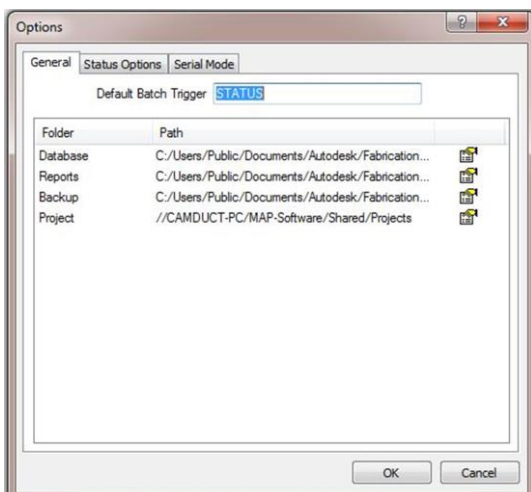
We are trying to implement “Fabrication Tracker” ourselves by following help files and have found some difference between installed “fabrication tracker-2016” and its “Help document” as stated below:

Installed “Fabrication Tracker-2016”

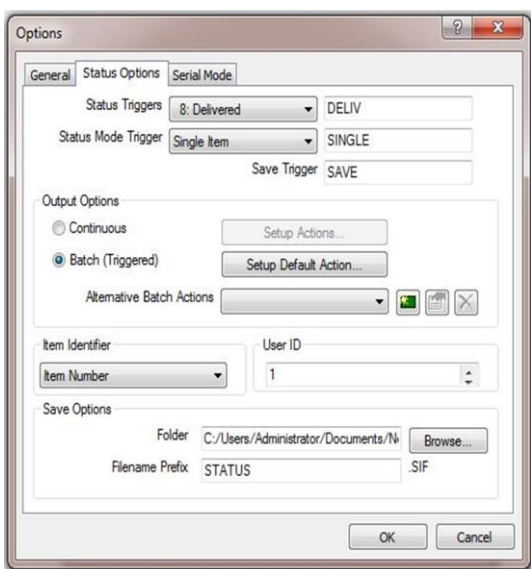
➤ Open Tracker



➤ File > Option>General tab

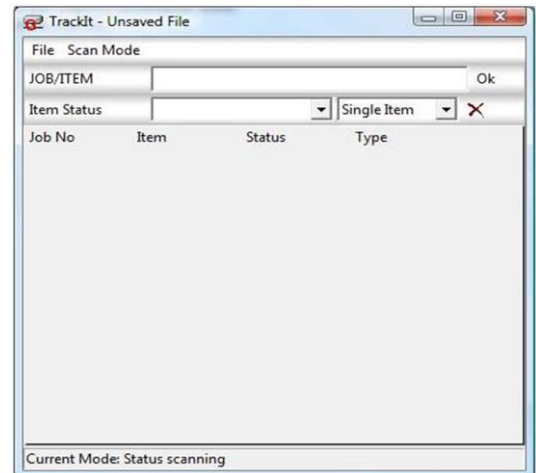


➤ Status option tab

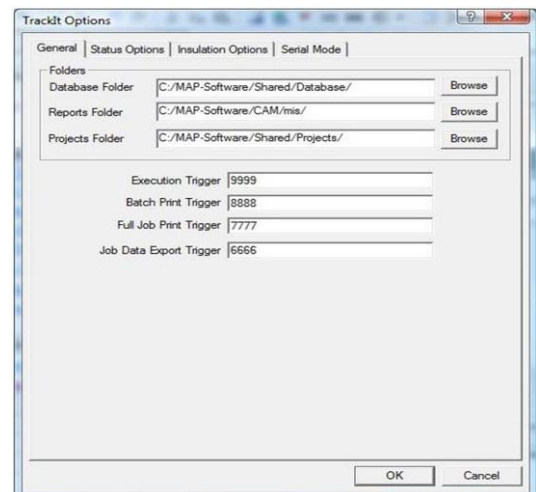


As shown in “Help Document in software”

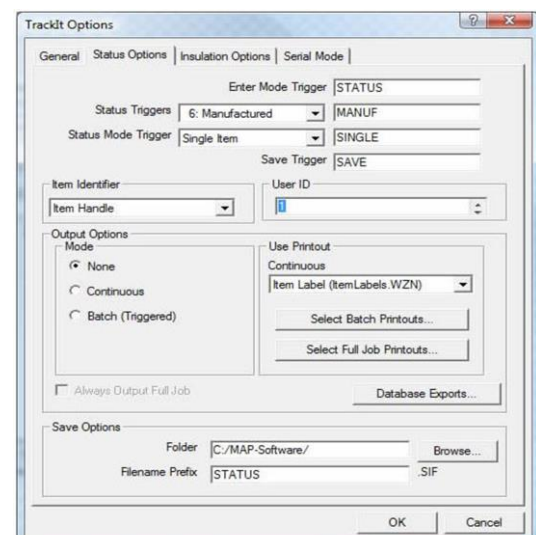
➤ Open Tracker



➤ File > Option>General tab



➤ Status option tab



Help document says **.SIF** file can be imported to fabrication cam duct by clicking "**Utilities> Import Statuses**".

But it is hidden in Fabrication Cam duct-2016 as show in below.

