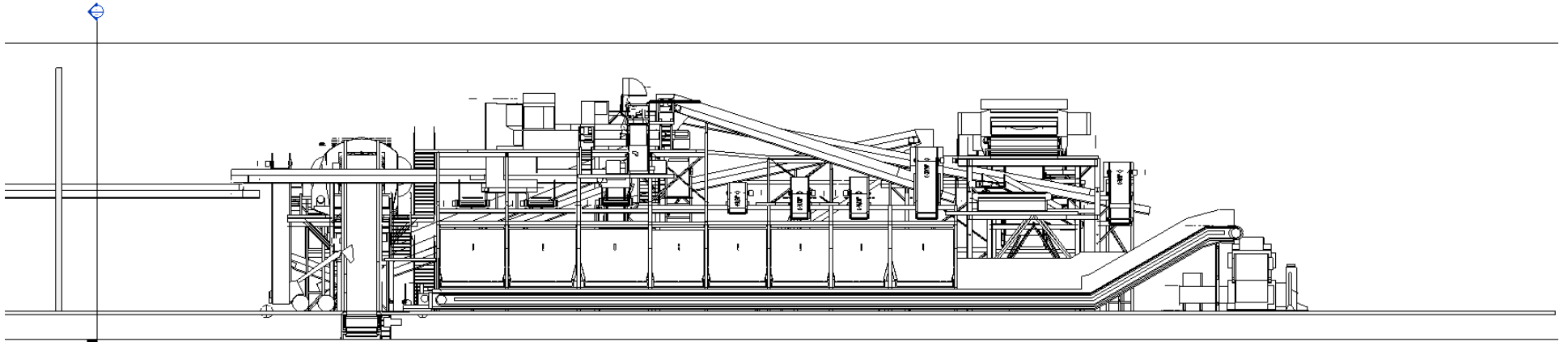


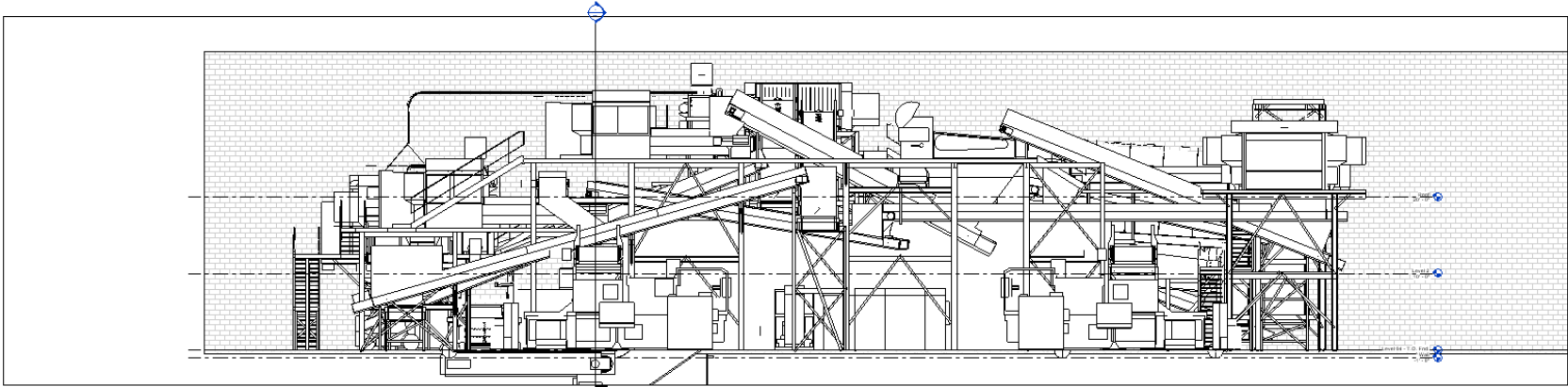
## Section C Elevation

AXM Import or link directly into Revit  
Section view does not cut correctly

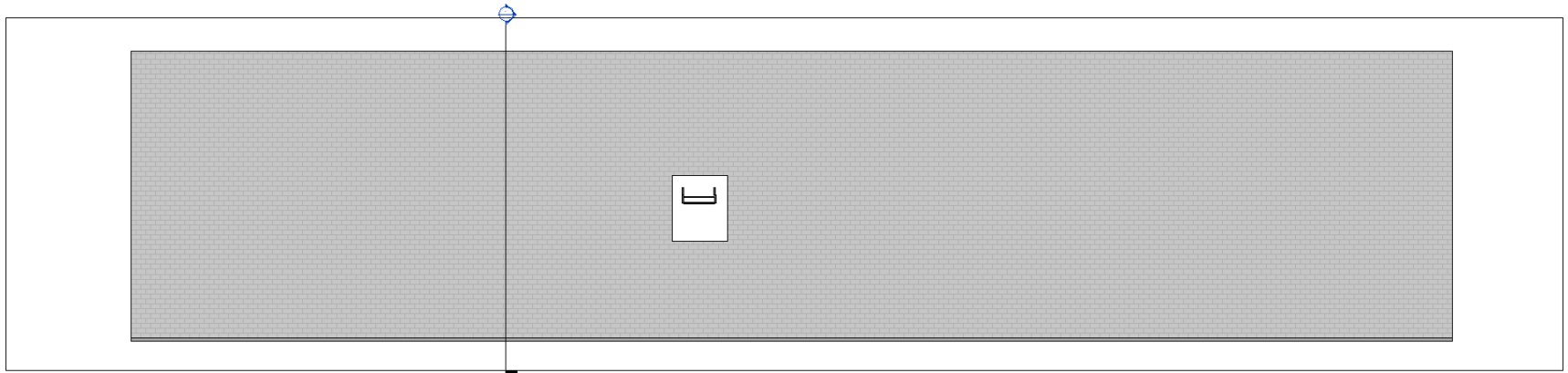


## Section C Elevation

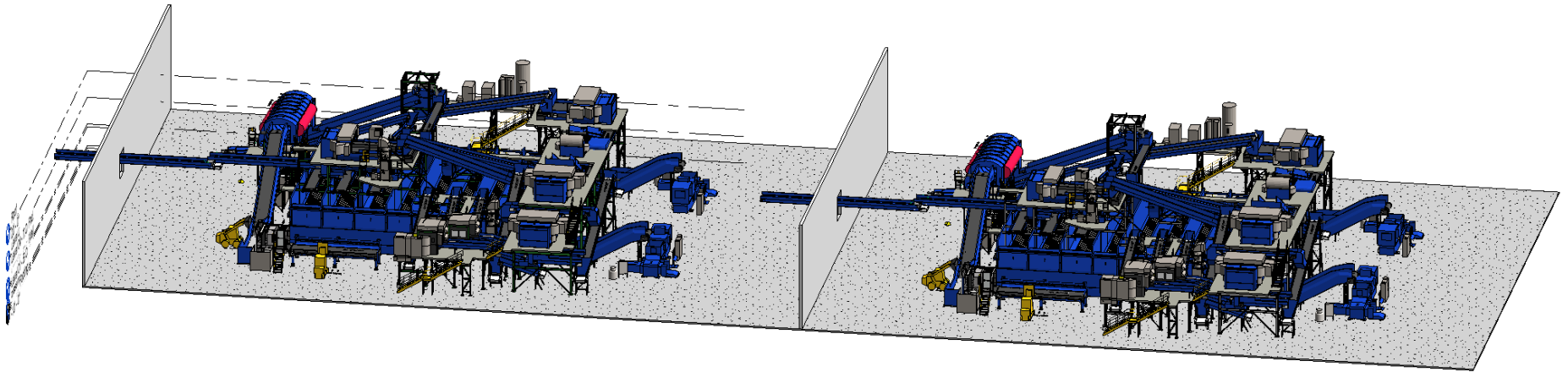
AXM Import into generic family then into Revit  
Section is cut correctly



**AXM Import or link directly into Revit  
Section A should only show the wall**



**AXM Import into generic family then into Revit  
Section B correctly shows wall only**



**3D View of Both Models**