

PARTS LIST				
ITEM	QTY	DESCRIPTION	MATERIAL	Sheet
1	4	McMaster 6111K84	Purchased Parts	-
2	1	Elevator Support Frame	Sub Assembly	9
3	1	Part Elevator	Sub Assembly	2
4	1	McMaster 6261K173 (3 FT)	Purchased Parts	-
5	1	Roadix FC200-2-DC	Purchased Parts	-
6	1	ALUM 9 X 4 X .5	Aluminum 6061	7
7	55	UHMW WHITE 3.059 X 8.125 X 1.75	UHMW, White	7
8	1	McMaster 2339K999	Purchased Parts	-
9	1	McMaster 2339K999	Purchased Parts	-
10	1	Base Weldment	Sub Assembly	11
11	1	Part Chute Assy	Sub Assembly	3
12	1	2 CU FT Hopper	Sub Assembly	-
13	1	Custom Hopper Tray Weldment	Sub Assembly	11

DECIMALS

ANGLES

.XX±.010


±0°30'0"

.XXX±.005

.XXXX±.001

TOLERANCES UNLESS OTHERWISE SPECIFIED

PARTS TO BE FREE OF BURRS AND SHARP EDGES

 **DIAL-X**  
AUTOMATED EQUIPMENT, INC.

DRAWN BY

MSerens

REVISION

CUSTOMER:

Test

MACHINE NAME:

Custom Elevator Hopper

JOB #

DATE:

SHEET

SCALE

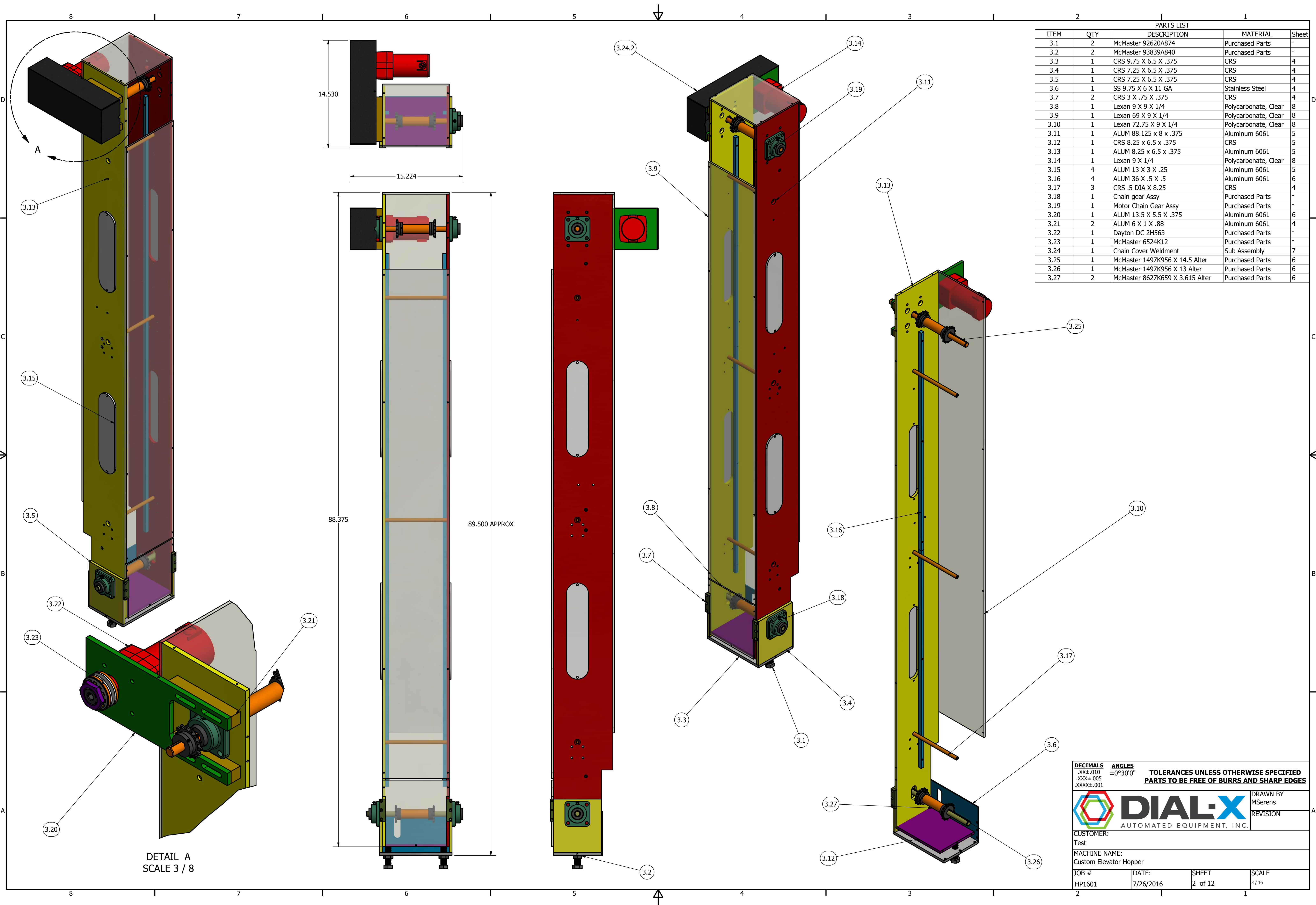
HP1601

7/26/2016

1 of 12

1/8





DETAIL A  
SCALE 3 / 8

PARTS LIST				
ITEM	QTY	DESCRIPTION	MATERIAL	Sheet
3.1	2	McMaster 92620A874	Purchased Parts	-
3.2	2	McMaster 93839A840	Purchased Parts	-
3.3	1	CRS 9.75 X 6.5 X .375	CRS	4
3.4	1	CRS 7.25 X 6.5 X .375	CRS	4
3.5	1	CRS 7.25 X 6.5 X .375	CRS	4
3.6	1	SS 9.75 X 6 X 11 GA	Stainless Steel	4
3.7	2	CRS 3 X .75 X .375	CRS	4
3.8	1	Lexan 9 X 9 X 1/4	Polycarbonate, Clear	8
3.9	1	Lexan 69 X 9 X 1/4	Polycarbonate, Clear	8
3.10	1	Lexan 72.75 X 9 X 1/4	Polycarbonate, Clear	8
3.11	1	ALUM 88.125 x 8 x .375	Aluminum 6061	5
3.12	1	CRS 8.25 x 6.5 x .375	CRS	5
3.13	1	ALUM 8.25 x 6.5 x .375	Aluminum 6061	5
3.14	1	Lexan 9 X 1/4	Polycarbonate, Clear	8
3.15	4	ALUM 13 X 3 X .25	Aluminum 6061	5
3.16	4	ALUM 36 X .5 X .5	Aluminum 6061	6
3.17	3	CRS .5 DIA X 8.25	CRS	4
3.18	1	Chain gear Assy	Purchased Parts	-
3.19	1	Motor Chain Gear Assy	Purchased Parts	-
3.20	1	ALUM 13.5 X 5.5 X .375	Aluminum 6061	6
3.21	2	ALUM 6 X 1 X .88	Aluminum 6061	4
3.22	1	Dayton DC 2H563	Purchased Parts	-
3.23	1	McMaster 6524K12	Purchased Parts	-
3.24	1	Chain Cover Weldment	Sub Assembly	7
3.25	1	McMaster 1497K956 X 14.5 Alter	Purchased Parts	6
3.26	1	McMaster 1497K956 X 13 Alter	Purchased Parts	6
3.27	2	McMaster 8627K659 X 3.615 Alter	Purchased Parts	6

DECIMALS

ANGLES

TOLERANCES UNLESS OTHERWISE SPECIFIED


.XX±.010

±0°30'0"

PARTS TO BE FREE OF BURRS AND SHARP EDGES

.XXX±.005

.XXXX±.001



DIAL-X

AUTOMATED EQUIPMENT, INC.

DRAWN BY

MSerens

REVISION

CUSTOMER:

Test

MACHINE NAME:

Custom Elevator Hopper

JOB #

HP1601

DATE:

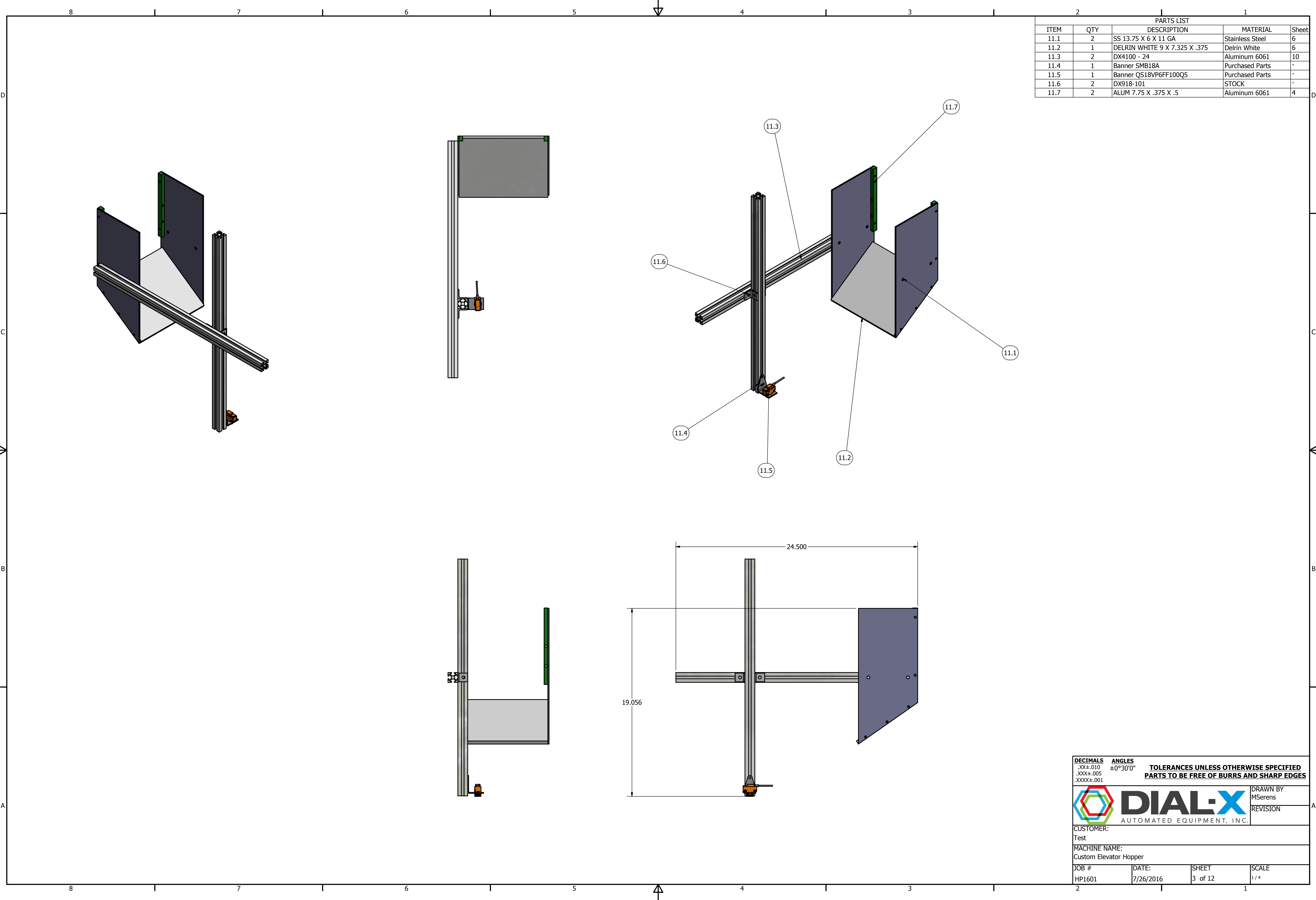
7/26/2016

SHEET

2 of 12

SCALE

3 / 16



PARTS LIST				
ITEM	QTY	DESCRIPTION	MATERIAL	Sheet
11.1	2	SS 13.75 X 6 X 11 GA	Stainless Steel	6
11.2	1	DELFIN WHITE 9 X 7.325 X .375	Delrin White	6
11.3	2	DX4100 - 24	Aluminum 6061	10
11.4	1	Banner SMB18A	Purchased Parts	-
11.5	1	Banner QS18VP6FF100Q5	Purchased Parts	-
11.6	2	DX918-101	STOCK	-
11.7	2	ALUM 7.75 X .375 X .5	Aluminum 6061	4

DECIMALS

ANGLES

.XX±.010


±0°30'0"

.XXX±.005

.XXXX±.001

TOLERANCES UNLESS OTHERWISE SPECIFIED

PARTS TO BE FREE OF BURRS AND SHARP EDGES

 **DIAL-X**  
AUTOMATED EQUIPMENT, INC.

DRAWN BY

MSerens

REVISION

CUSTOMER:

Test

MACHINE NAME:

Custom Elevator Hopper

JOB #

DATE:

SHEET

SCALE

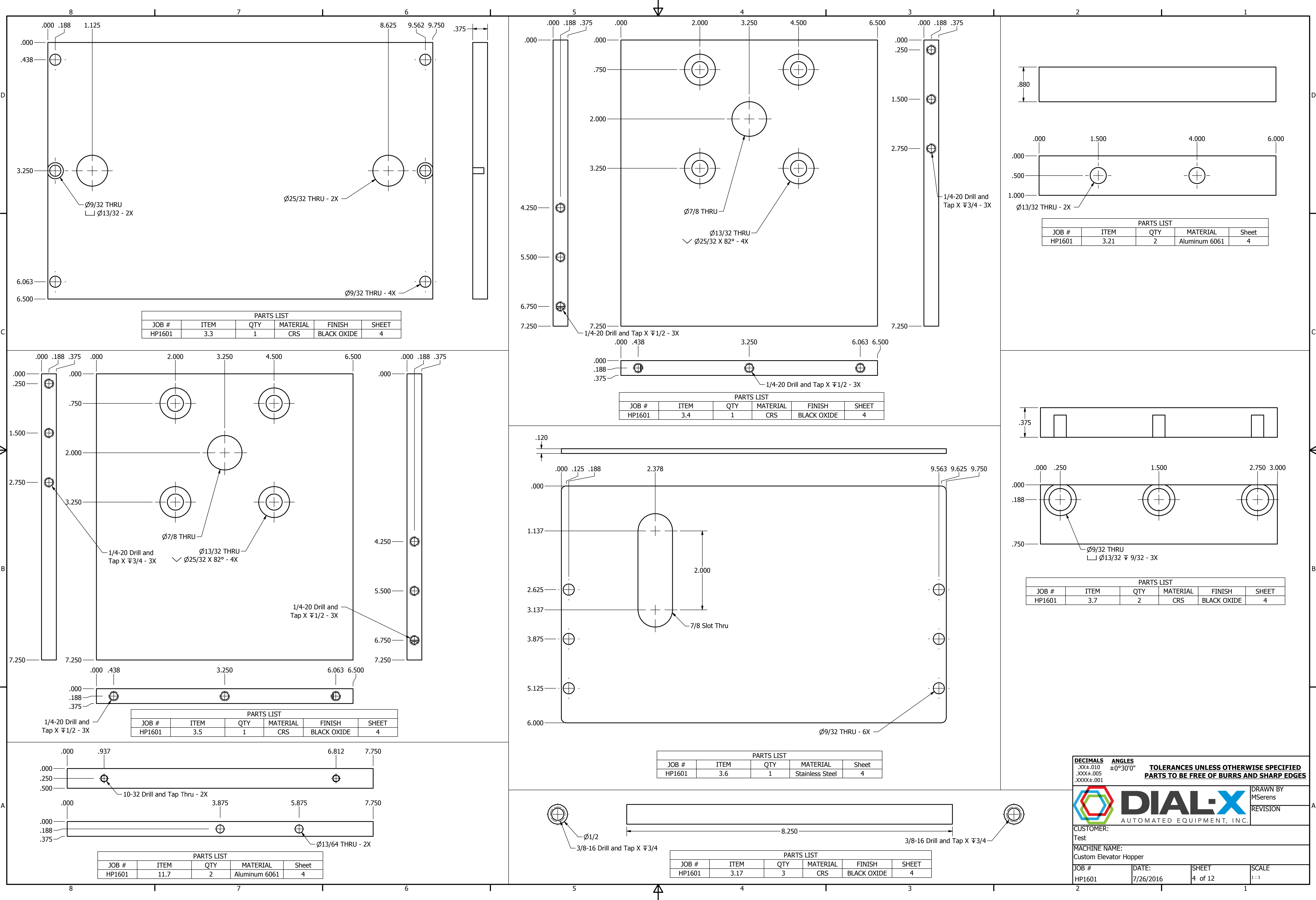
HP1601

7/26/2016

3 of 12

1 / 4





DECIMALS

ANGLES

.XX±.010


±0°30'0"

.XXX±.005

.XXX±.001

TOLERANCES UNLESS OTHERWISE SPECIFIED

PARTS TO BE FREE OF BURRS AND SHARP EDGES



DIAL-X

AUTOMATED EQUIPMENT, INC.

DRAWN BY

MSerens

REVISION

CUSTOMER:

Test

MACHINE NAME:

Custom Elevator Hopper

JOB #

DATE:

SHEET

SCALE

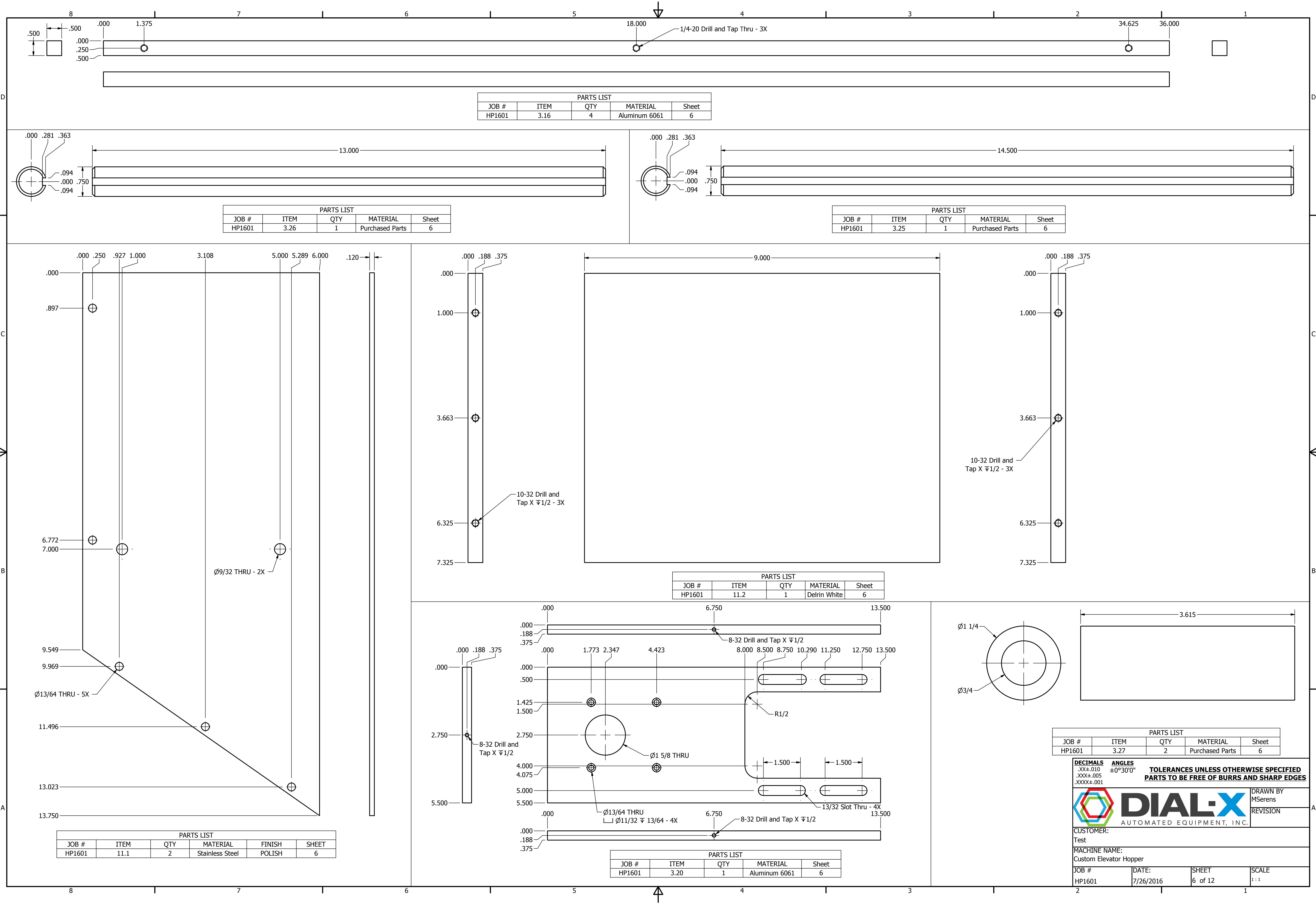
HP1601

7/26/2016

4 of 12

1:1





**DECIMALS** .XX±.010  
.XXX±.005  
.XXXX±.001

**ANGLES** ±0°30'0"

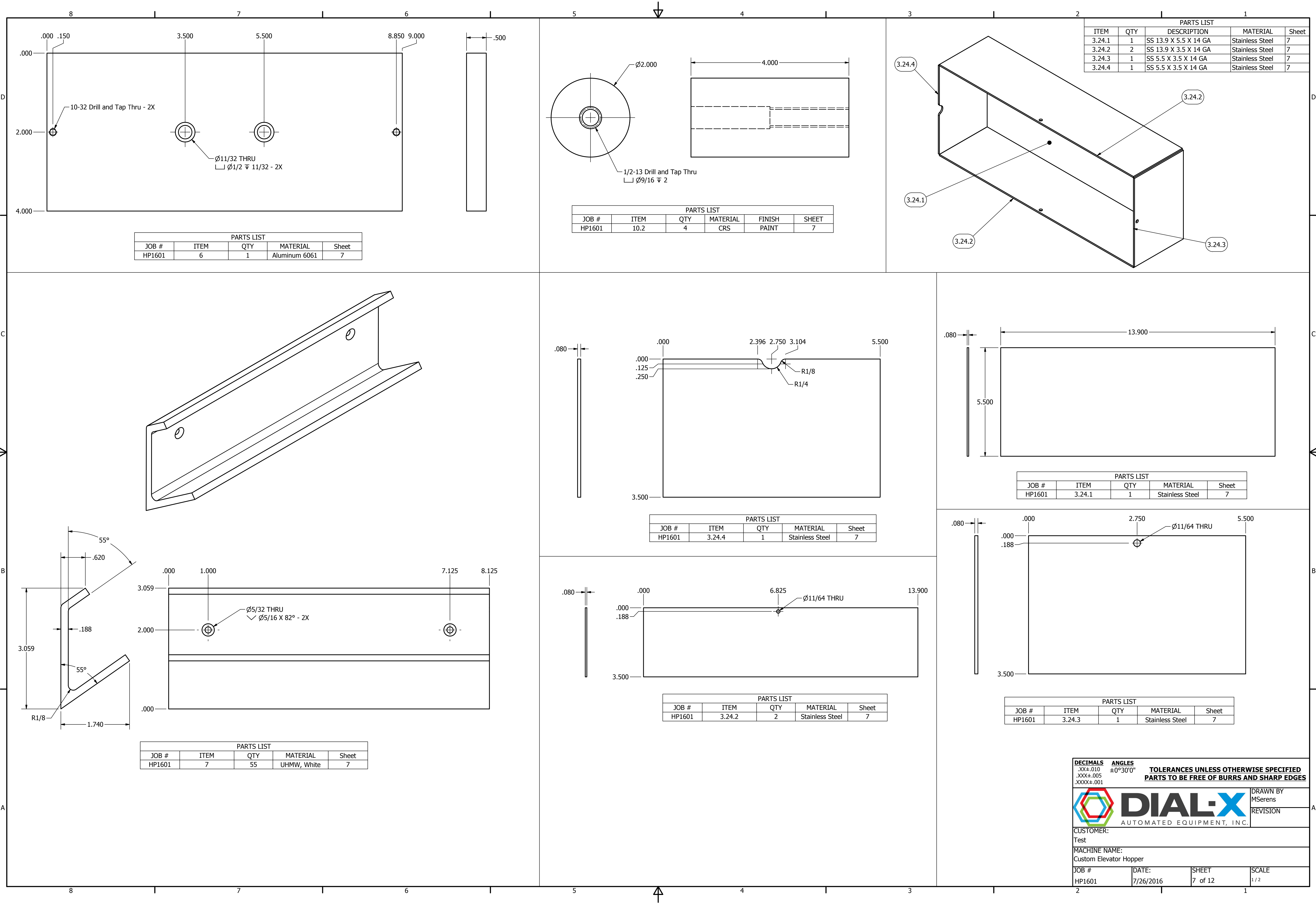
**TOLERANCES UNLESS OTHERWISE SPECIFIED**  
**PARTS TO BE FREE OF BURRS AND SHARP EDGES**



CUSTOMER: Test  
MACHINE NAME: Custom Elevator Hopper

JOB #	DATE:	SHEET	SCALE
HP1601	7/26/2016	6 of 12	1:1





PARTS LIST				
ITEM	QTY	DESCRIPTION	MATERIAL	Sheet
3.24.1	1	SS 13.9 X 5.5 X 14 GA	Stainless Steel	7
3.24.2	2	SS 13.9 X 3.5 X 14 GA	Stainless Steel	7
3.24.3	1	SS 5.5 X 3.5 X 14 GA	Stainless Steel	7
3.24.4	1	SS 5.5 X 3.5 X 14 GA	Stainless Steel	7

PARTS LIST					
JOB #	ITEM	QTY	MATERIAL	FINISH	SHEET
HP1601	10.2	4	CRS	PAINT	7

PARTS LIST				
JOB #	ITEM	QTY	MATERIAL	Sheet
HP1601	6	1	Aluminum 6061	7

PARTS LIST				
JOB #	ITEM	QTY	MATERIAL	Sheet
HP1601	3.24.1	1	Stainless Steel	7

PARTS LIST				
JOB #	ITEM	QTY	MATERIAL	Sheet
HP1601	3.24.4	1	Stainless Steel	7

PARTS LIST				
JOB #	ITEM	QTY	MATERIAL	Sheet
HP1601	3.24.2	2	Stainless Steel	7

PARTS LIST				
JOB #	ITEM	QTY	MATERIAL	Sheet
HP1601	3.24.3	1	Stainless Steel	7

PARTS LIST				
JOB #	ITEM	QTY	MATERIAL	Sheet
HP1601	7	55	UHMW, White	7

DECIMALS

ANGLES

.XX±.010

±0°30'0"

.XXX±.005

.XXXX±.001

TOLERANCES UNLESS OTHERWISE SPECIFIED

PARTS TO BE FREE OF BURRS AND SHARP EDGES

DIAL-X

AUTOMATED EQUIPMENT, INC.

DRAWN BY

MSerens

REVISION

CUSTOMER:

Test

MACHINE NAME:

Custom Elevator Hopper

JOB #

DATE:

SHEET

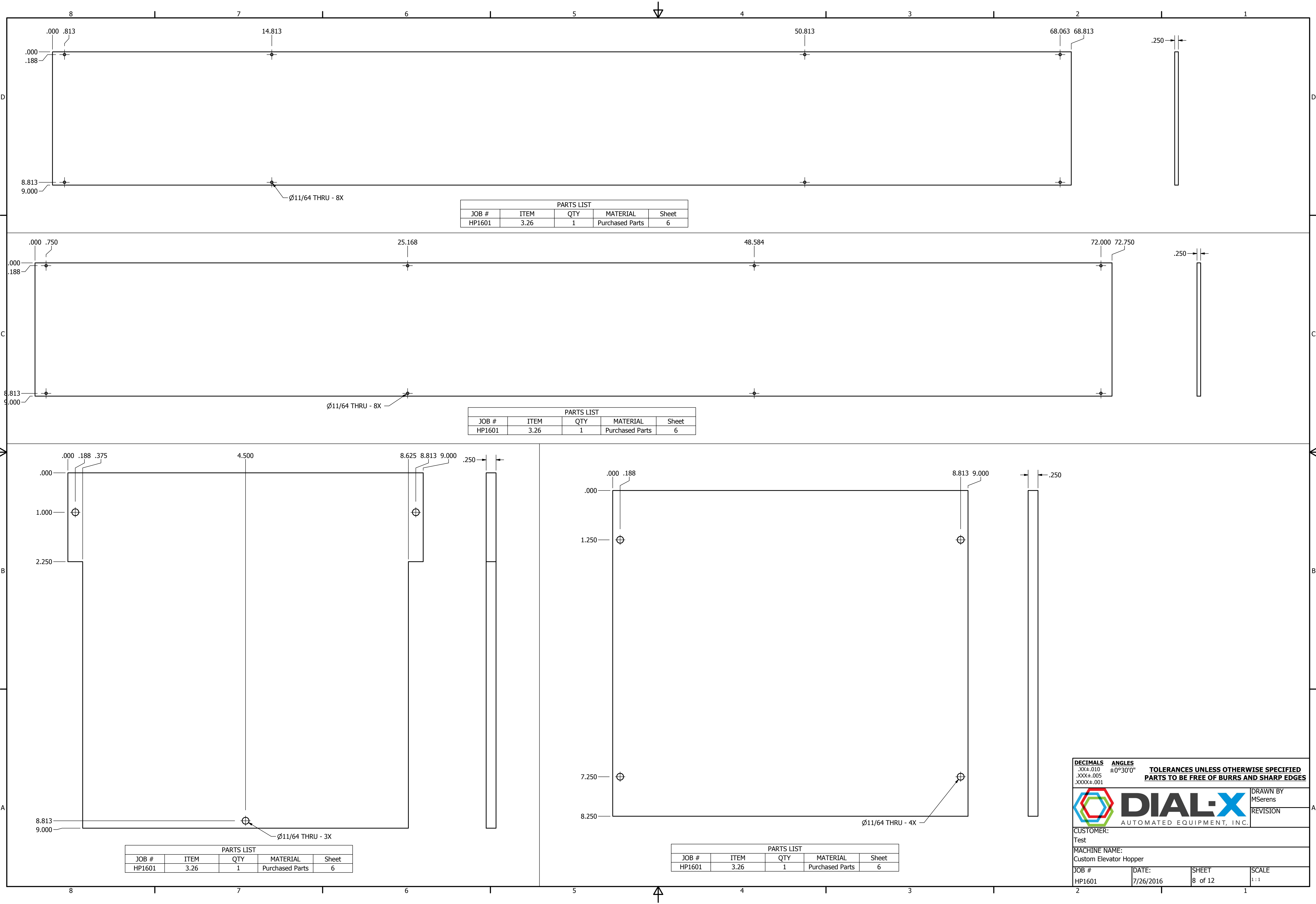
SCALE

HP1601

7/26/2016

7 of 12

1/2



DECIMALS

ANGLES

.XX±.010


±0°30'0"

.XXX±.005

.XXXX±.001

TOLERANCES UNLESS OTHERWISE SPECIFIED

PARTS TO BE FREE OF BURRS AND SHARP EDGES

 **DIAL-X**

DRAWN BY

MSerens

REVISION

AUTOMATED EQUIPMENT, INC.

CUSTOMER:

Test

MACHINE NAME:

Custom Elevator Hopper

JOB #

DATE:

SHEET

SCALE

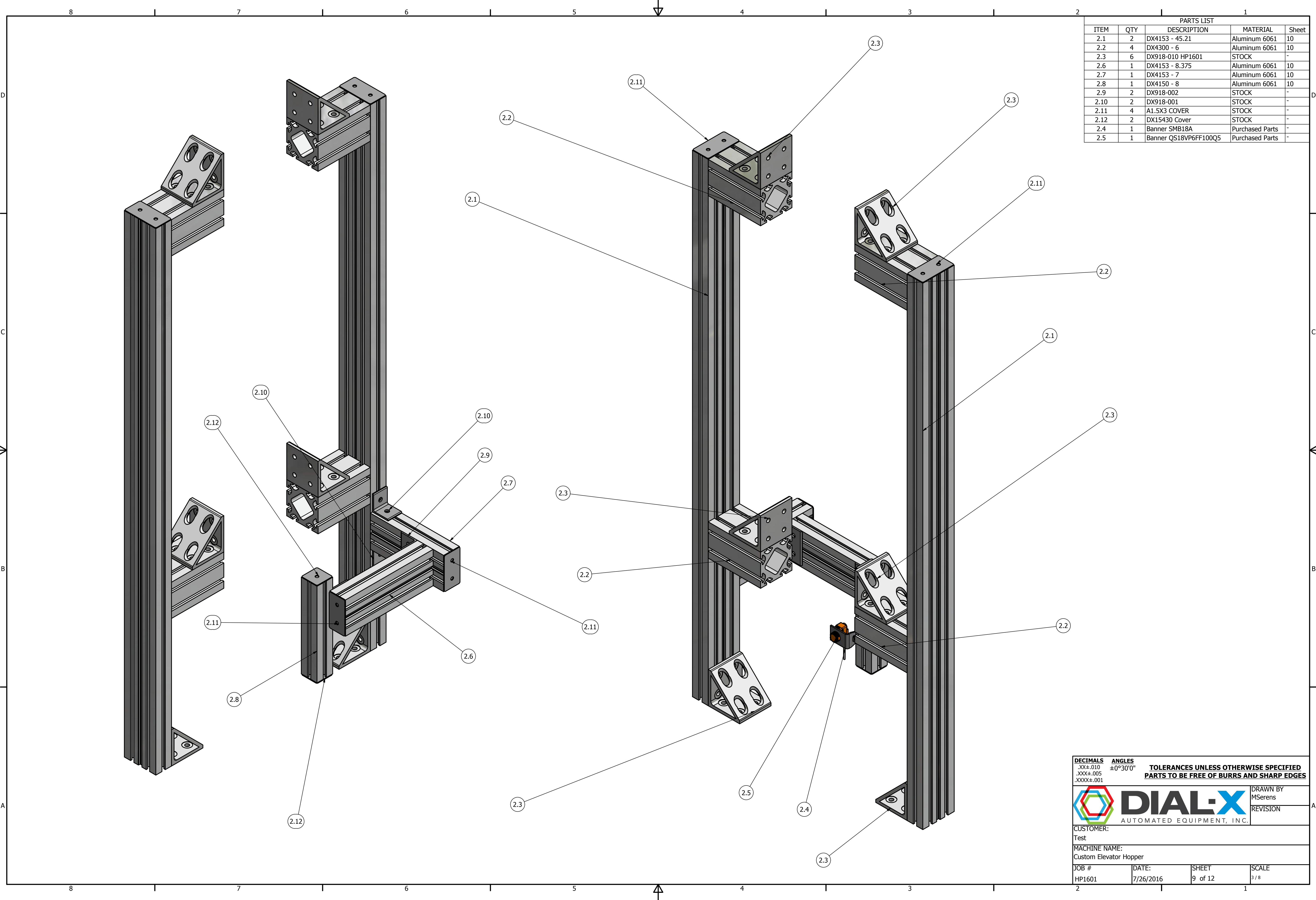
HP1601

7/26/2016

8 of 12

1:1





PARTS LIST				
ITEM	QTY	DESCRIPTION	MATERIAL	Sheet
2.1	2	DX4153 - 45.21	Aluminum 6061	10
2.2	4	DX4300 - 6	Aluminum 6061	10
2.3	6	DX918-010 HP1601	STOCK	-
2.6	1	DX4153 - 8.375	Aluminum 6061	10
2.7	1	DX4153 - 7	Aluminum 6061	10
2.8	1	DX4150 - 8	Aluminum 6061	10
2.9	2	DX918-002	STOCK	-
2.10	2	DX918-001	STOCK	-
2.11	4	A1.5X3 COVER	STOCK	-
2.12	2	DX15430 Cover	STOCK	-
2.4	1	Banner SMB18A	Purchased Parts	-
2.5	1	Banner QS18VP6FF100Q5	Purchased Parts	-

DECIMALS

ANGLES

TOLERANCES UNLESS OTHERWISE SPECIFIED


.XX±.010

±0°30'0"

PARTS TO BE FREE OF BURRS AND SHARP EDGES

.XXX±.005

.XXXX±.001



DIAL-X

AUTOMATED EQUIPMENT, INC.

DRAWN BY

MSerens

REVISION

CUSTOMER:

Test

MACHINE NAME:

Custom Elevator Hopper

JOB #

HP1601

DATE:

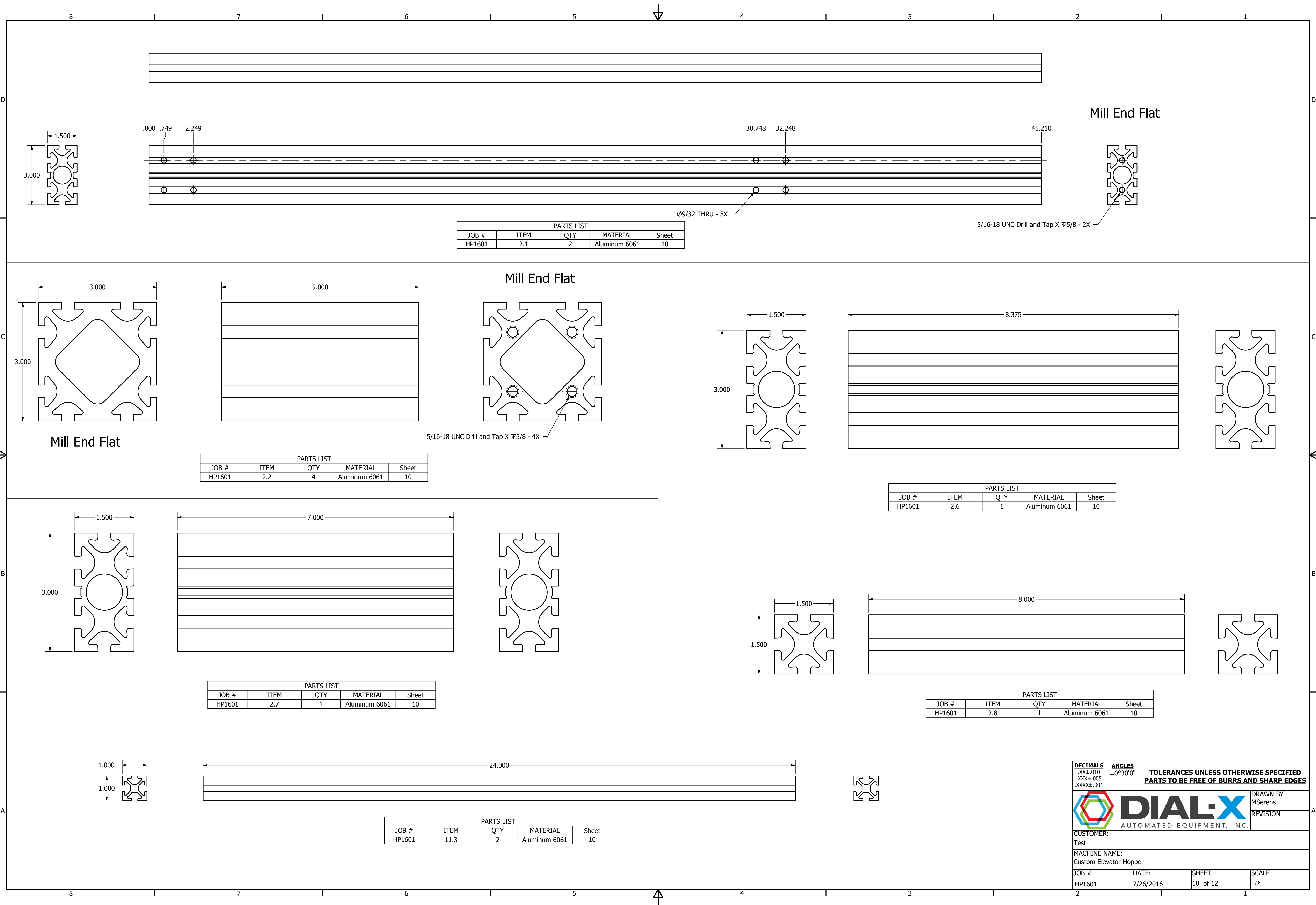
7/26/2016

SHEET

9 of 12

SCALE

3 / 8



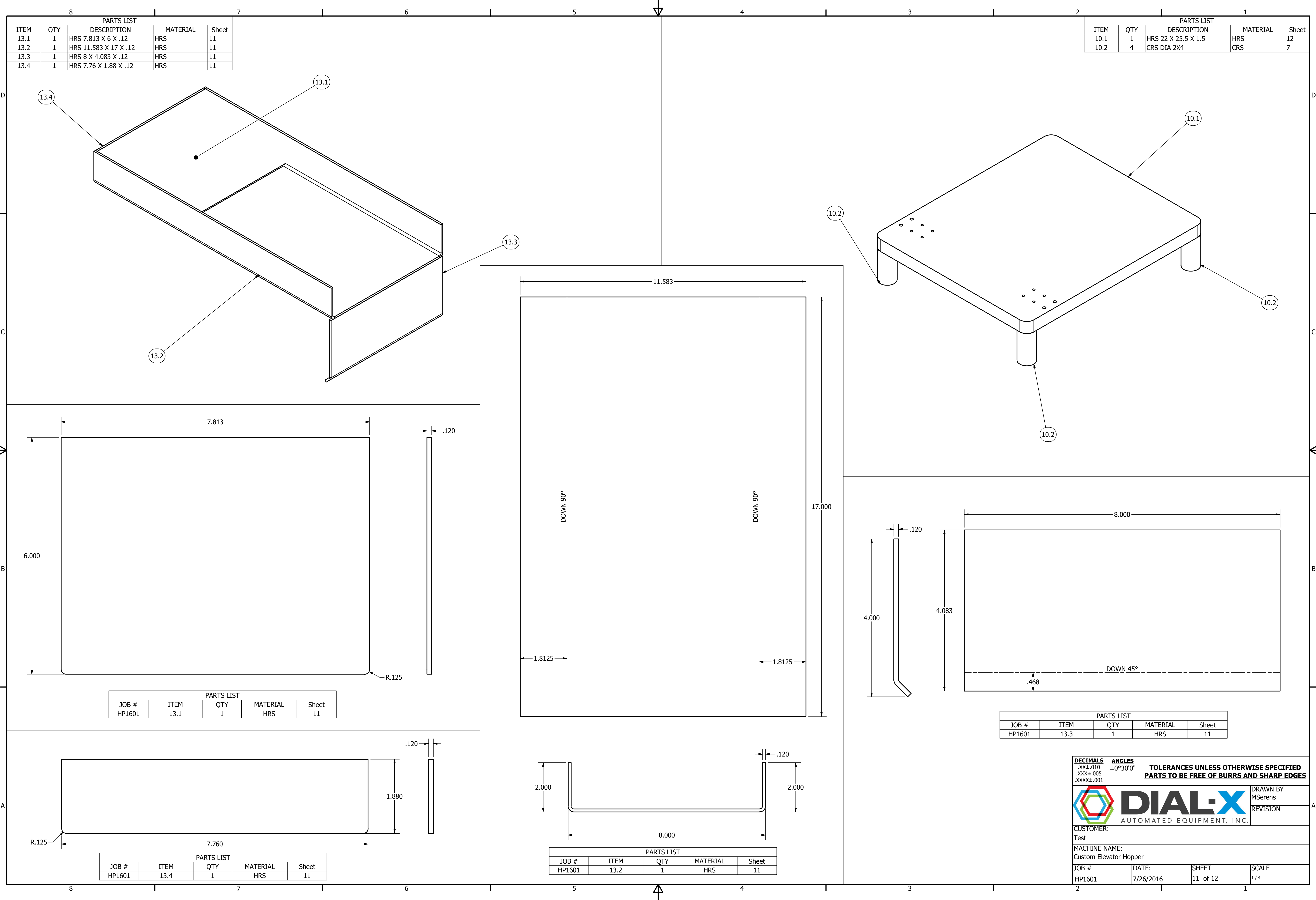
DECIMALS .XX $\pm$ .010 .XXX $\pm$ .005 .XXXX $\pm$ .001  
ANGLES  $\pm$ 0°30'0"  
TOLERANCES UNLESS OTHERWISE SPECIFIED  
PARTS TO BE FREE OF BURRS AND SHARP EDGES



CUSTOMER: Test  
MACHINE NAME: Custom Elevator Hopper

JOB # HP1601 DATE: 7/26/2016 SHEET 10 of 12 SCALE 5/8





PARTS LIST				
ITEM	QTY	DESCRIPTION	MATERIAL	Sheet
13.1	1	HRS 7.813 X 6 X .12	HRS	11
13.2	1	HRS 11.583 X 17 X .12	HRS	11
13.3	1	HRS 8 X 4.083 X .12	HRS	11
13.4	1	HRS 7.76 X 1.88 X .12	HRS	11

PARTS LIST				
ITEM	QTY	DESCRIPTION	MATERIAL	Sheet
10.1	1	HRS 22 X 25.5 X 1.5	HRS	12
10.2	4	CRS DIA 2X4	CRS	7

PARTS LIST				
JOB #	ITEM	QTY	MATERIAL	Sheet
HP1601	13.1	1	HRS	11

PARTS LIST				
JOB #	ITEM	QTY	MATERIAL	Sheet
HP1601	13.3	1	HRS	11

PARTS LIST				
JOB #	ITEM	QTY	MATERIAL	Sheet
HP1601	13.4	1	HRS	11

PARTS LIST				
JOB #	ITEM	QTY	MATERIAL	Sheet
HP1601	13.2	1	HRS	11

DECIMALS

ANGLES

.XX±.010


±0°30'0"

.XXX±.005

.XXXX±.001

**TOLERANCES UNLESS OTHERWISE SPECIFIED**

**PARTS TO BE FREE OF BURRS AND SHARP EDGES**



**DIAL-X**

AUTOMATED EQUIPMENT, INC.

DRAWN BY

MSerens

REVISION

CUSTOMER:

Test

MACHINE NAME:

Custom Elevator Hopper

JOB #	DATE:	SHEET	SCALE
HP1601	7/26/2016	11 of 12	1/4

