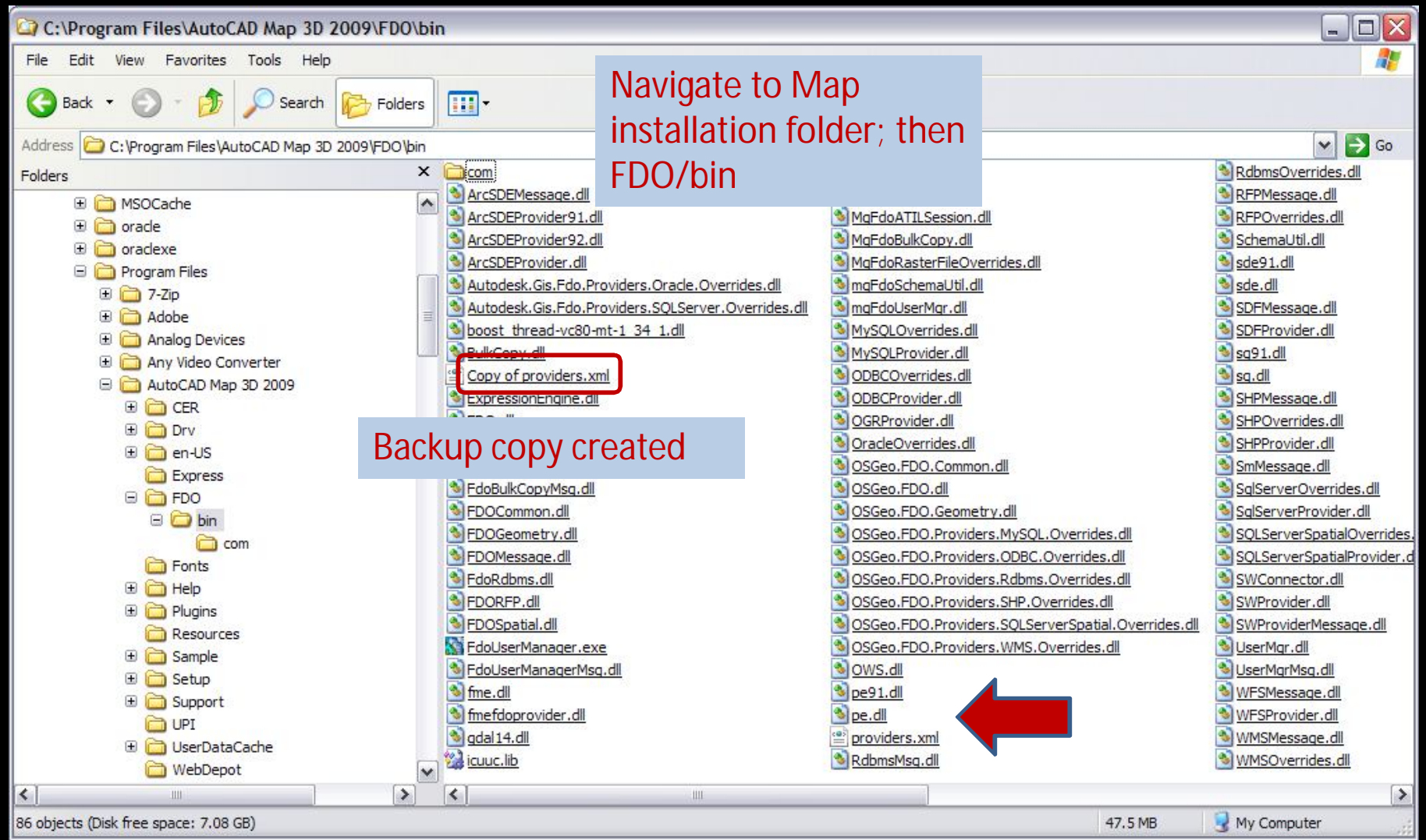
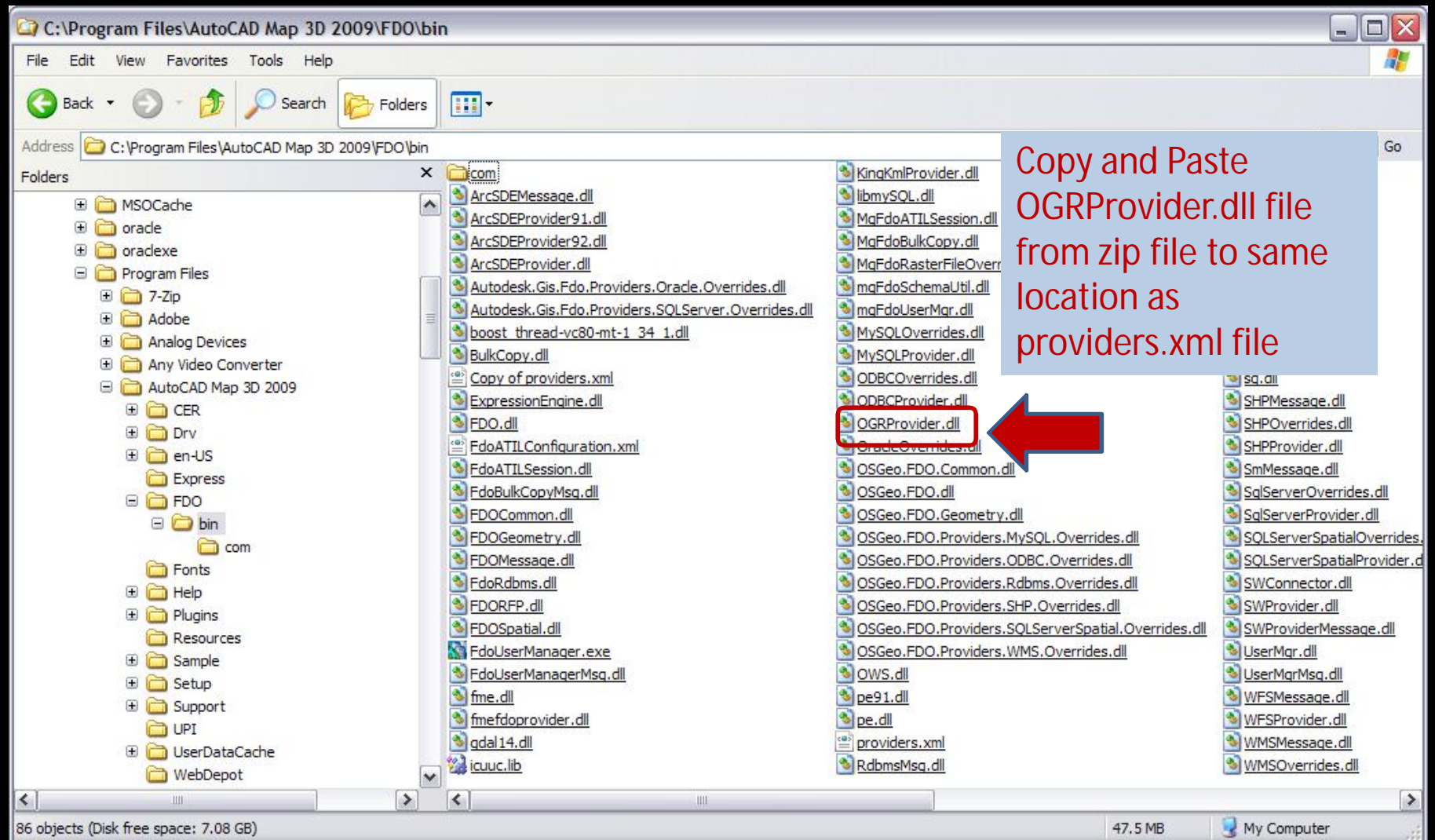


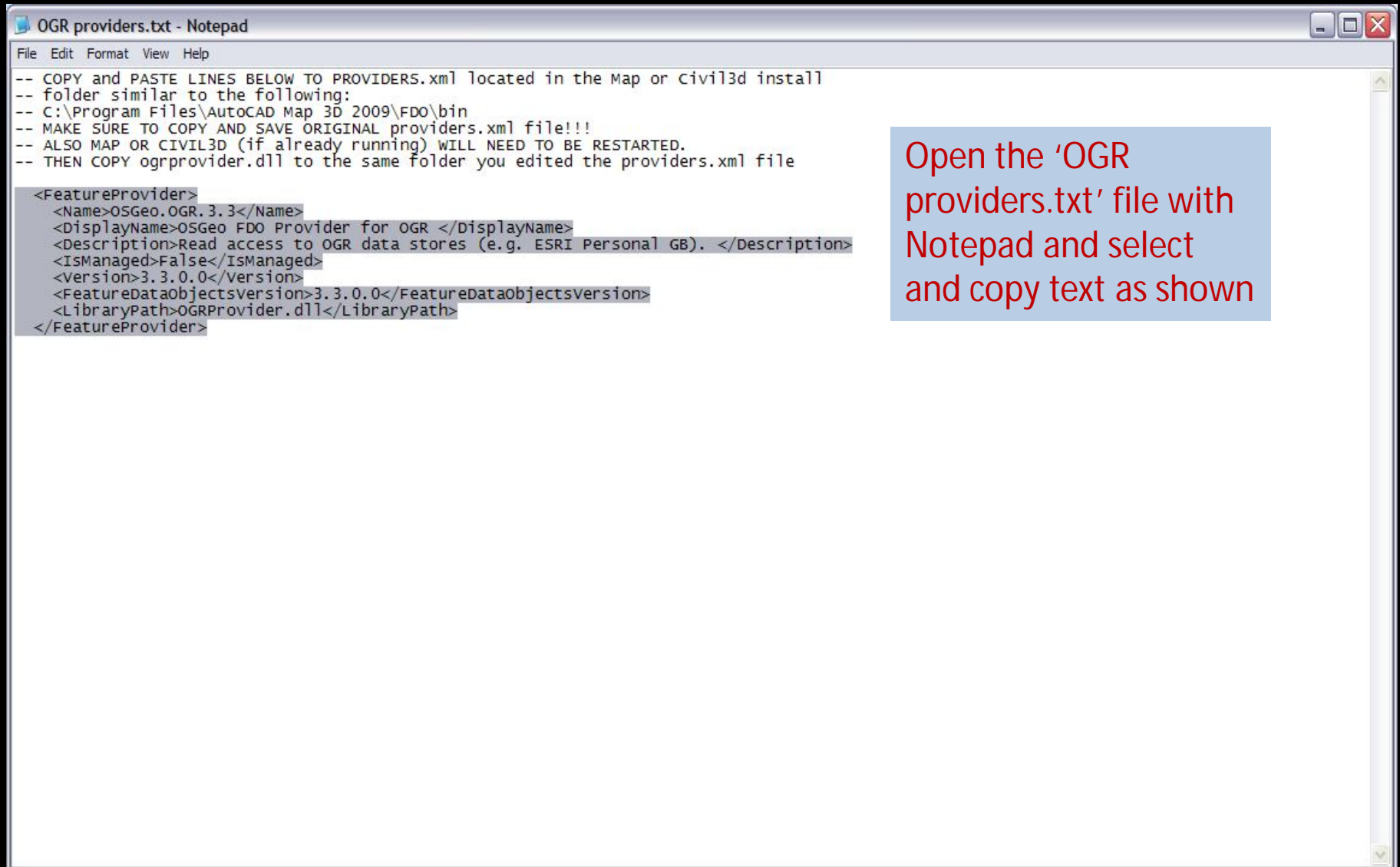
Configuration of Map 3D FDO Provider for PGDB



Configuration of Map 3D FDO Provider for PGDB



Configuration of Map 3D FDO Provider for PGDB



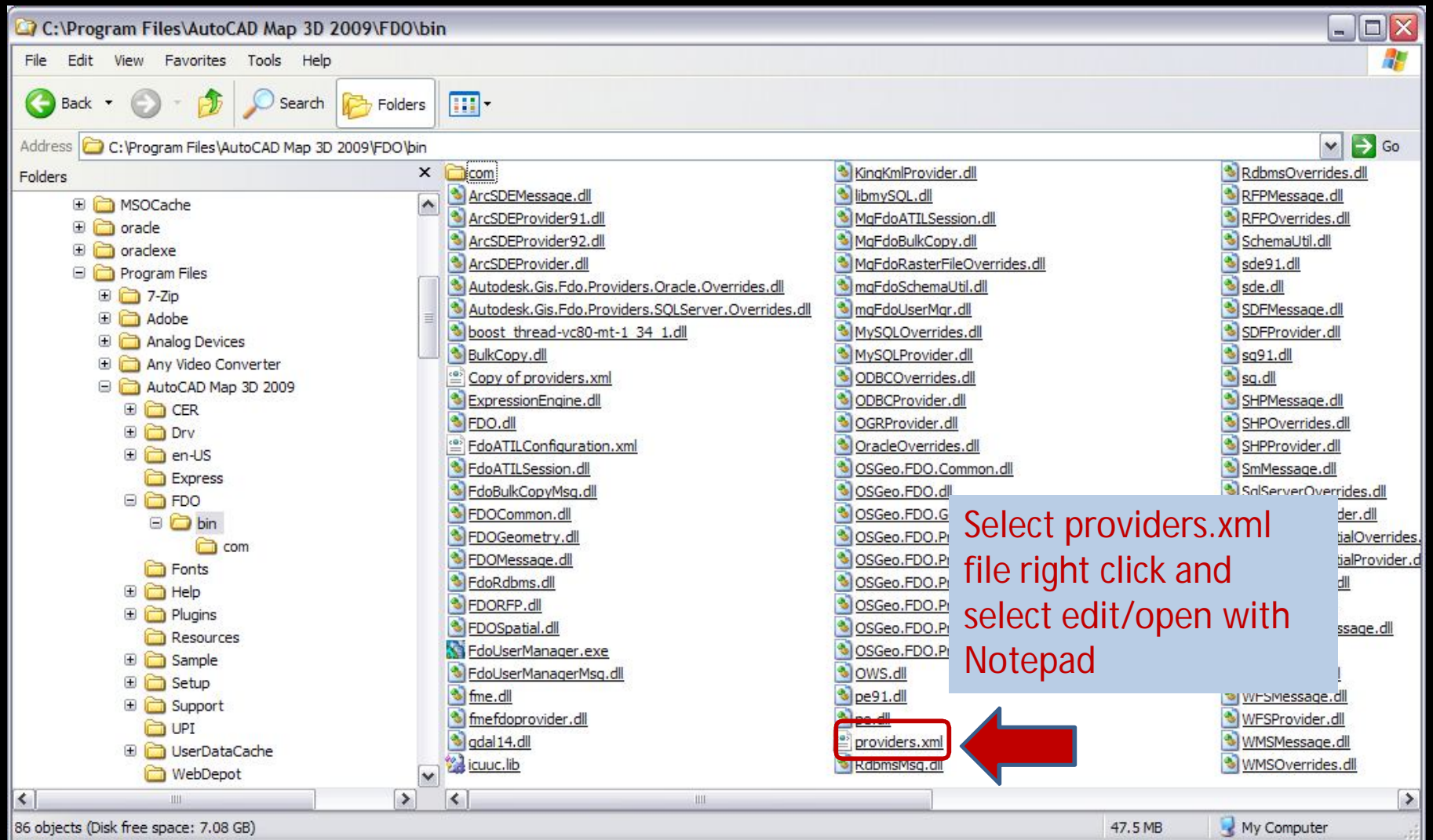
```
OGR providers.txt - Notepad
File Edit Format View Help

-- COPY and PASTE LINES BELOW TO PROVIDERS.xml located in the Map or Civil3d install
-- folder similar to the following:
-- C:\Program Files\AutoCAD Map 3D 2009\FDO\bin
-- MAKE SURE TO COPY AND SAVE ORIGINAL providers.xml file!!!
-- ALSO MAP OR CIVIL3D (if already running) WILL NEED TO BE RESTARTED.
-- THEN COPY ogrprovider.dll to the same folder you edited the providers.xml file

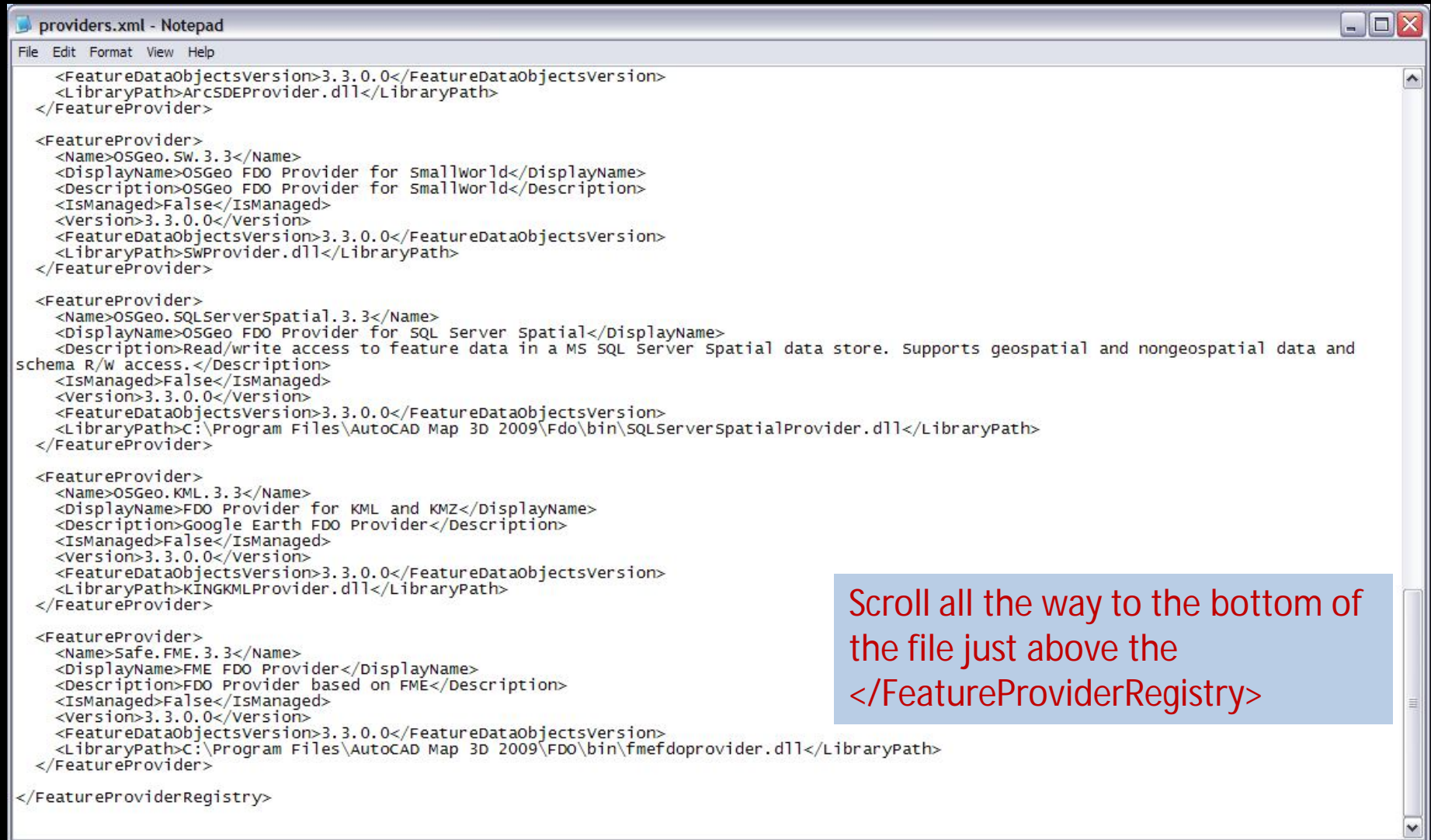
<FeatureProvider>
  <Name>OSGeo.OGR.3.3</Name>
  <DisplayName>OSGeo FDO Provider for OGR </DisplayName>
  <Description>Read access to OGR data stores (e.g. ESRI Personal GB). </Description>
  <IsManaged>False</IsManaged>
  <Version>3.3.0.0</Version>
  <FeatureDataObjectsVersion>3.3.0.0</FeatureDataObjectsVersion>
  <LibraryPath>OGRProvider.dll</LibraryPath>
</FeatureProvider>
```

Open the 'OGR providers.txt' file with Notepad and select and copy text as shown

Configuration of Map 3D FDO Provider for PGDB



Configuration of Map 3D FDO Provider for PGDB



```
providers.xml - Notepad
File Edit Format View Help

<FeatureDataObjectsVersion>3.3.0.0</FeatureDataObjectsVersion>
<LibraryPath>ArcSDEProvider.dll</LibraryPath>
</FeatureProvider>

<FeatureProvider>
  <Name>OSGeo.SW.3.3</Name>
  <DisplayName>OSGeo FDO Provider for Smallworld</DisplayName>
  <Description>OSGeo FDO Provider for Smallworld</Description>
  <IsManaged>False</IsManaged>
  <Version>3.3.0.0</Version>
  <FeatureDataObjectsVersion>3.3.0.0</FeatureDataObjectsVersion>
  <LibraryPath>SWProvider.dll</LibraryPath>
</FeatureProvider>

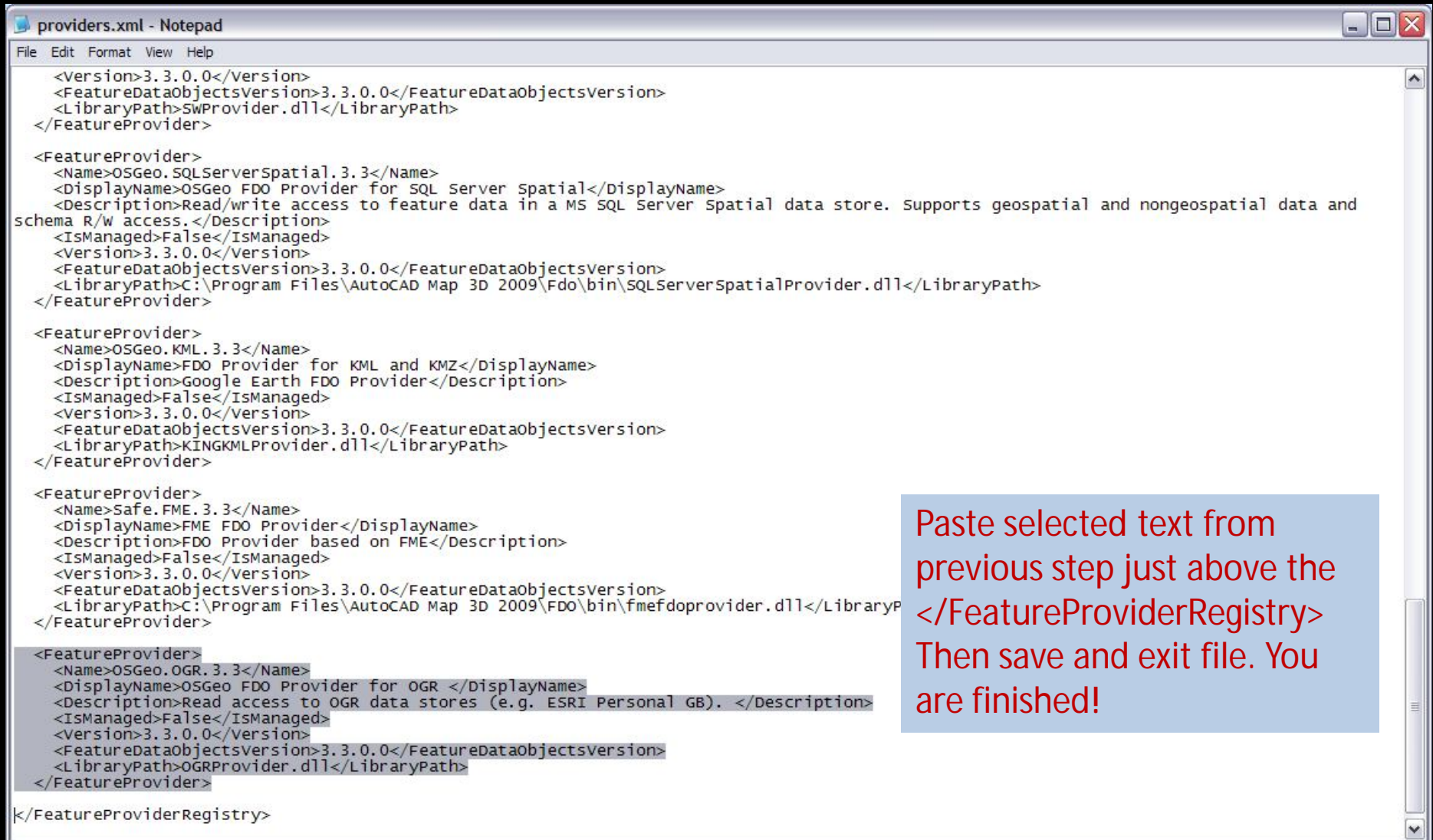
<FeatureProvider>
  <Name>OSGeo.SQLServerSpatial.3.3</Name>
  <DisplayName>OSGeo FDO Provider for SQL Server Spatial</DisplayName>
  <Description>Read/write access to feature data in a MS SQL Server Spatial data store. Supports geospatial and nongeospatial data and
schema R/w access.</Description>
  <IsManaged>False</IsManaged>
  <Version>3.3.0.0</Version>
  <FeatureDataObjectsVersion>3.3.0.0</FeatureDataObjectsVersion>
  <LibraryPath>C:\Program Files\AutoCAD Map 3D 2009\Fdo\bin\SQLServerSpatialProvider.dll</LibraryPath>
</FeatureProvider>

<FeatureProvider>
  <Name>OSGeo.KML.3.3</Name>
  <DisplayName>FDO Provider for KML and KMZ</DisplayName>
  <Description>Google Earth FDO Provider</Description>
  <IsManaged>False</IsManaged>
  <Version>3.3.0.0</Version>
  <FeatureDataObjectsVersion>3.3.0.0</FeatureDataObjectsVersion>
  <LibraryPath>KINGKMLProvider.dll</LibraryPath>
</FeatureProvider>

<FeatureProvider>
  <Name>Safe.FME.3.3</Name>
  <DisplayName>FME FDO Provider</DisplayName>
  <Description>FDO Provider based on FME</Description>
  <IsManaged>False</IsManaged>
  <Version>3.3.0.0</Version>
  <FeatureDataObjectsVersion>3.3.0.0</FeatureDataObjectsVersion>
  <LibraryPath>C:\Program Files\AutoCAD Map 3D 2009\FDO\bin\fmefdoprovider.dll</LibraryPath>
</FeatureProvider>
</FeatureProviderRegistry>
```

Scroll all the way to the bottom of the file just above the </FeatureProviderRegistry>

Configuration of Map 3D FDO Provider for PGDB



```
providers.xml - Notepad
File Edit Format View Help

<Version>3.3.0.0</Version>
<FeatureDataObjectsVersion>3.3.0.0</FeatureDataObjectsVersion>
<LibraryPath>SWProvider.dll</LibraryPath>
</FeatureProvider>

<FeatureProvider>
  <Name>OSGeo.SQLServerSpatial.3.3</Name>
  <DisplayName>OSGeo FDO Provider for SQL Server Spatial</DisplayName>
  <Description>Read/write access to feature data in a MS SQL Server Spatial data store. Supports geospatial and nongeospatial data and schema R/W access.</Description>
  <IsManaged>False</IsManaged>
  <Version>3.3.0.0</Version>
  <FeatureDataObjectsVersion>3.3.0.0</FeatureDataObjectsVersion>
  <LibraryPath>C:\Program Files\AutoCAD Map 3D 2009\Fdo\bin\SQLServerSpatialProvider.dll</LibraryPath>
</FeatureProvider>

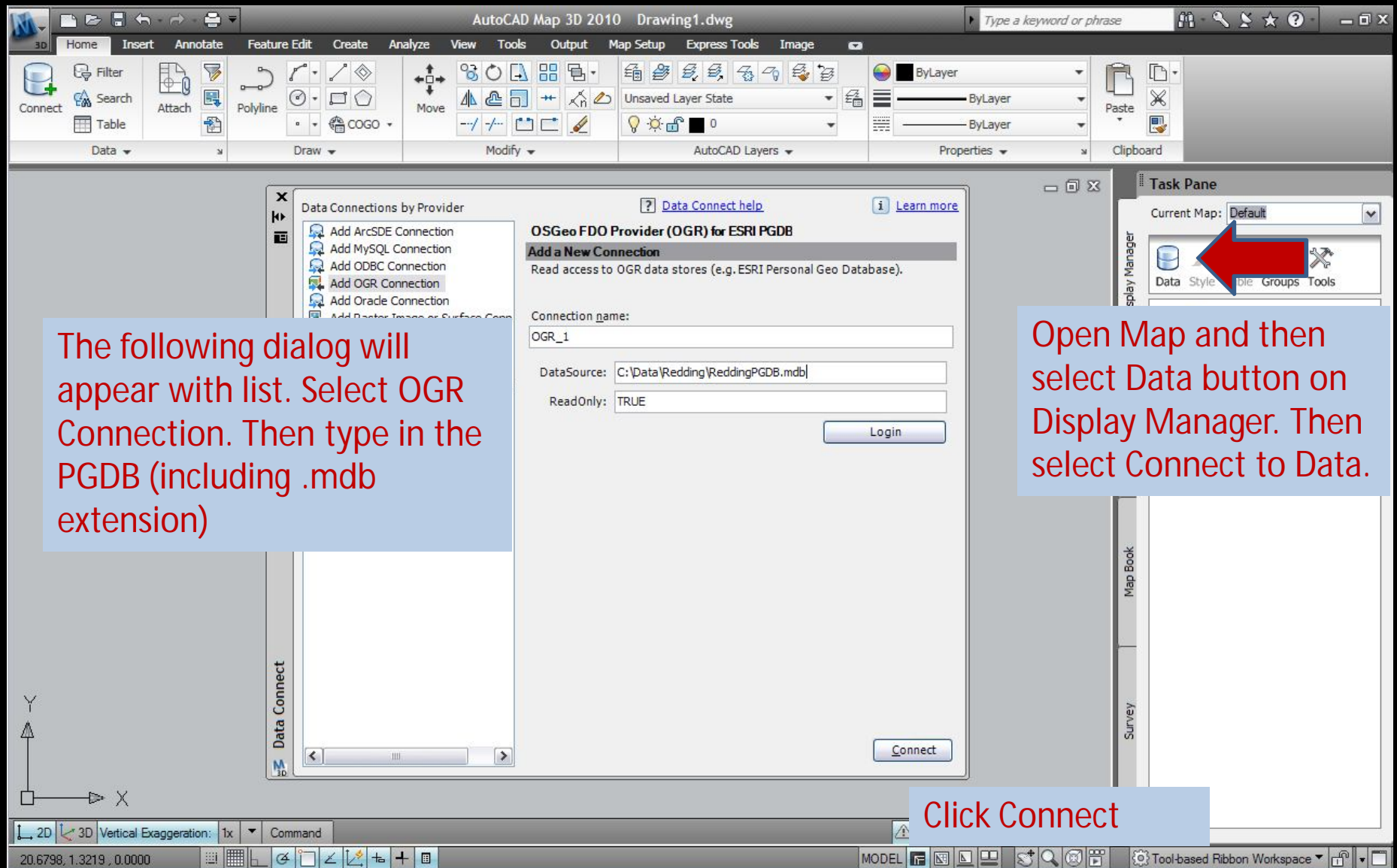
<FeatureProvider>
  <Name>OSGeo.KML.3.3</Name>
  <DisplayName>FDO Provider for KML and KMZ</DisplayName>
  <Description>Google Earth FDO Provider</Description>
  <IsManaged>False</IsManaged>
  <Version>3.3.0.0</Version>
  <FeatureDataObjectsVersion>3.3.0.0</FeatureDataObjectsVersion>
  <LibraryPath>KINGKMLProvider.dll</LibraryPath>
</FeatureProvider>

<FeatureProvider>
  <Name>Safe.FME.3.3</Name>
  <DisplayName>FME FDO Provider</DisplayName>
  <Description>FDO Provider based on FME</Description>
  <IsManaged>False</IsManaged>
  <Version>3.3.0.0</Version>
  <FeatureDataObjectsVersion>3.3.0.0</FeatureDataObjectsVersion>
  <LibraryPath>C:\Program Files\AutoCAD Map 3D 2009\FDO\bin\fmefdoprovder.dll</LibraryPath>
</FeatureProvider>

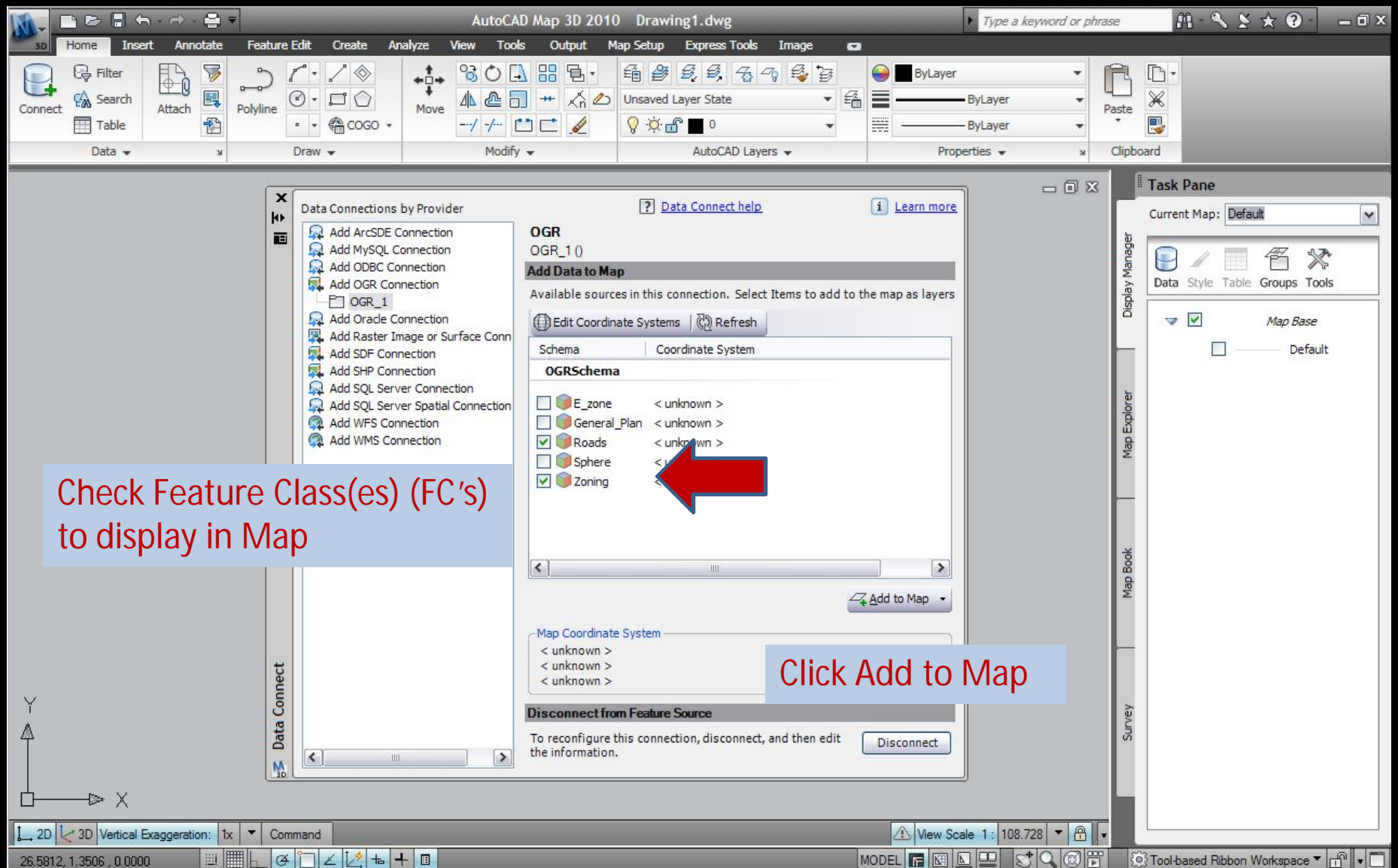
<FeatureProvider>
  <Name>OSGeo.ogr.3.3</Name>
  <DisplayName>OSGeo FDO Provider for OGR </DisplayName>
  <Description>Read access to OGR data stores (e.g. ESRI Personal GB). </Description>
  <IsManaged>False</IsManaged>
  <Version>3.3.0.0</Version>
  <FeatureDataObjectsVersion>3.3.0.0</FeatureDataObjectsVersion>
  <LibraryPath>OGRProvider.dll</LibraryPath>
</FeatureProvider>
</FeatureProviderRegistry>
```

Paste selected text from previous step just above the </FeatureProviderRegistry>
Then save and exit file. You are finished!

Configuration of Map 3D FDO Provider for PGDB



Configuration of Map 3D FDO Provider for PGDB



Configuration of Map 3D FDO Provider for PGDB

