

Copy Files Easily with iLogic Design Copy (Even Without iLogic Rules in the Design)

Posted on [redacted] by [redacted]

iLogic Design Copy Settings

Copy

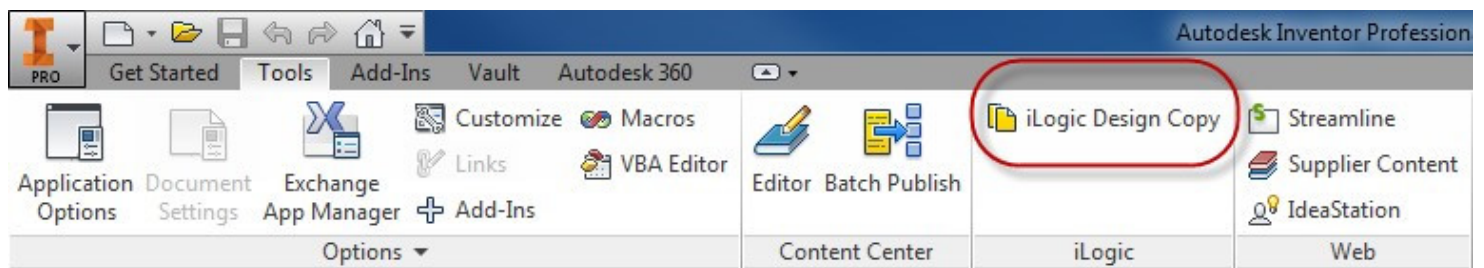
Source	Target	Ren
C:\Synergis\Training\Chromalox	C:\Copy Temp	
Base Models	C:\Copy Temp\Base Models	
302074005.ipt	C:\Copy Temp\Base Models\PROJ_387_302074005.ipt	[
630799003.ipt	C:\Copy Temp\Base Models\PROJ_387_630799003.ipt	[
CFB_1_ASSY.iam	C:\Copy Temp\Base Models\PROJ_387_CFB_1_ASSY.iam	[
CFB_1_BRL_THRD_STD.ipt	C:\Copy Temp\Base Models\PROJ_387_CFB_1_BRL_THRD_STD.ipt	[
CFB_1_BRL_THRU_STD.ipt	C:\Copy Temp\Base Models\PROJ_387_CFB_1_BRL_THRU_STD.ipt	[

Don't let the name scare you, this method of copying a model is not dependent on iLogic. In fact, the files to be copied do not have to have a single iLogic rule in them. A benefit of the **iLogic Design Copy** option over other options is that it takes into account any rules that exist in the models that are being copied and enables you to determine whether those rules are copied or not. This is also a great way to create a fully configured version of a design where all rules are removed. If no rule exists, the models are simply copied.

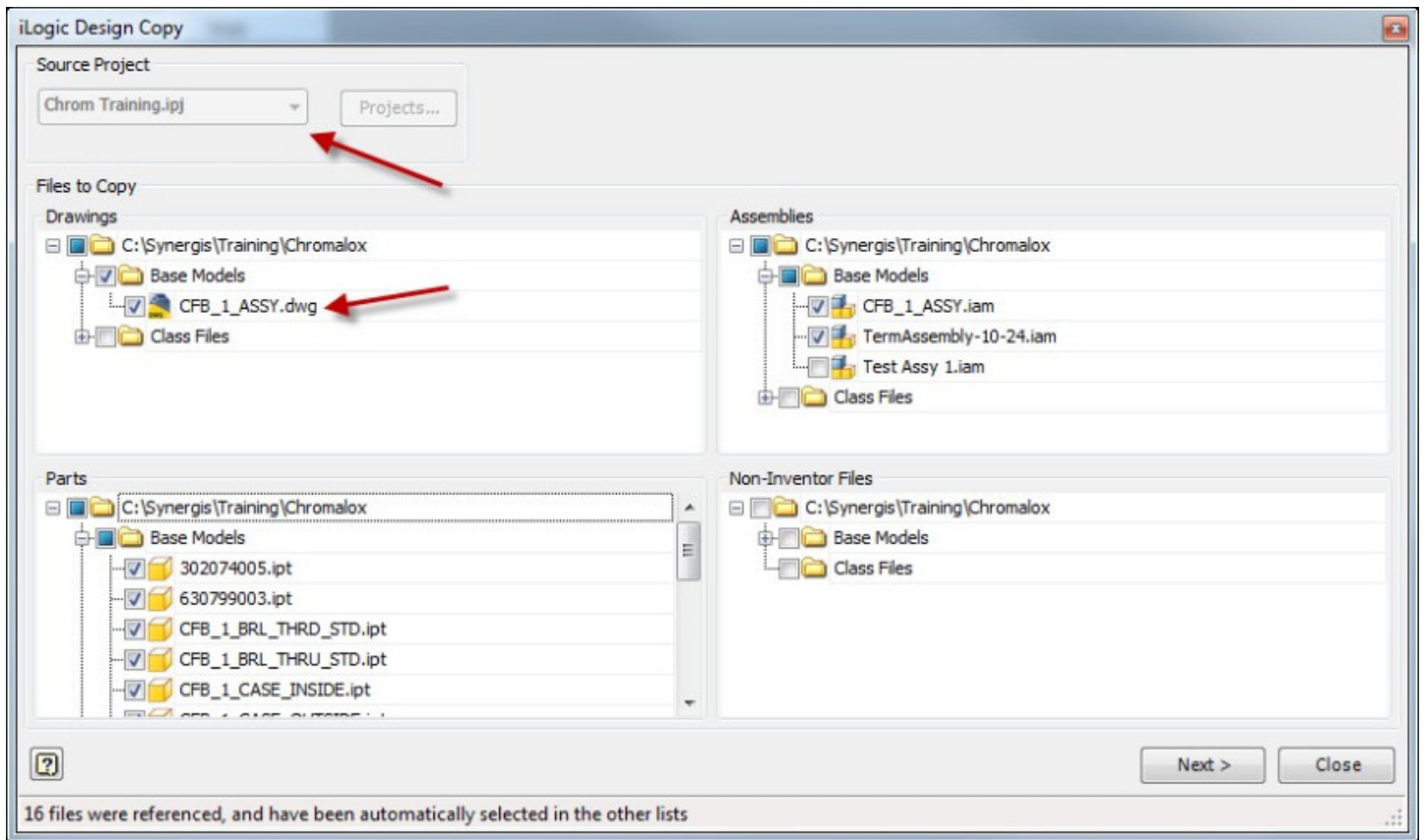
- You can use iLogic Design Copy to copy an existing design to create a completely new design.
- You can copy a design and include or exclude any existing rules.

To use the **iLogic Design Copy** option, all files, including the models being copied, must be closed.

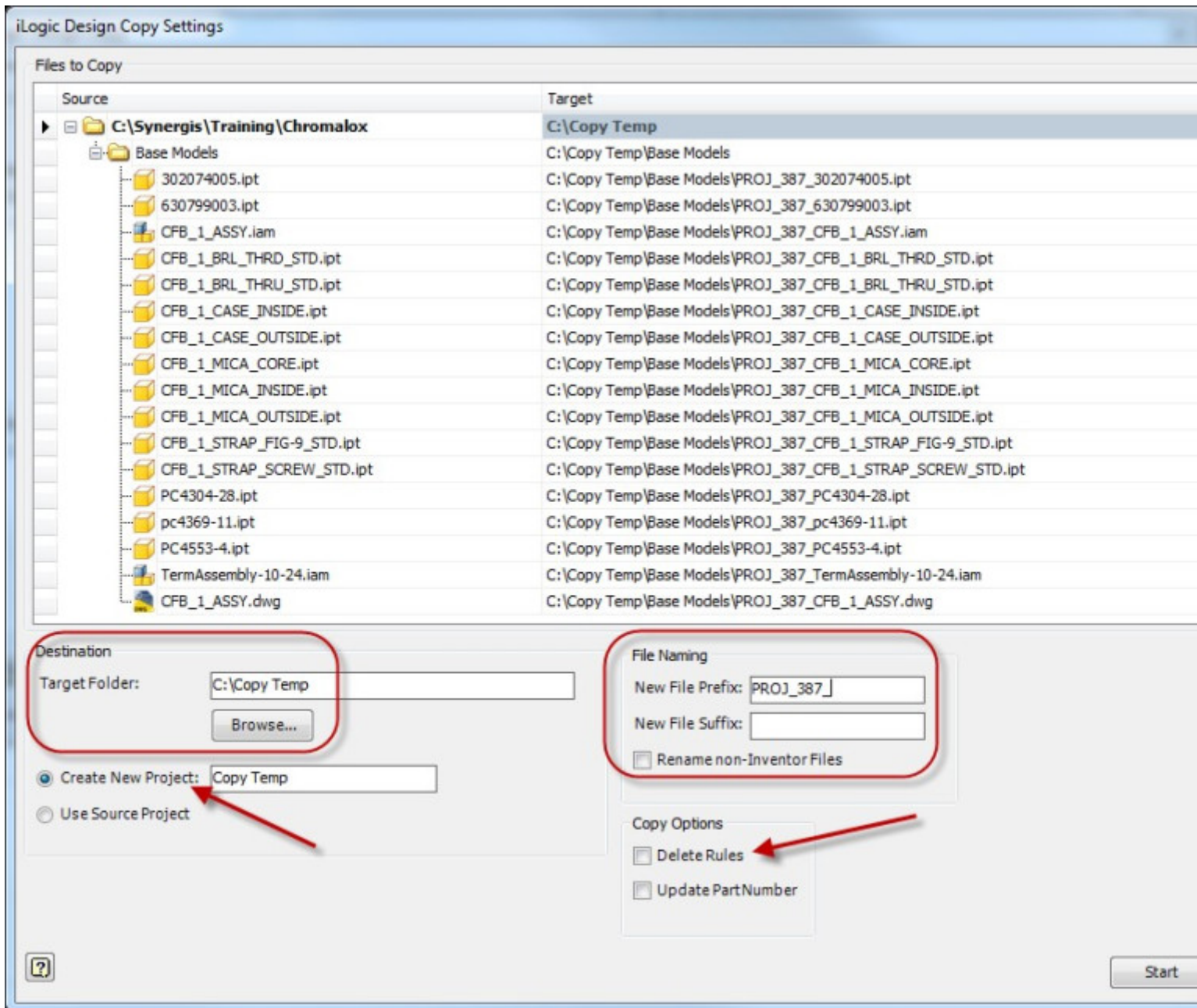
From the Start screen go to the **Tools** tab and on the **iLogic** panel select the **iLogic Design Copy**.



Once executed, you select a project file to reference and select Assemblies, Parts, Drawings, and Non-Inventor Files in the project to be copied. In the Files to Copy area, select all files to be copied. If a parent file is selected, such as a drawing or assembly, any referenced child file is automatically selected.



When file selection is complete, select **Next**.



On this screen you can select the destination folder for the models, create a new or use the existing project file, and apply a prefix or suffix to rename the files. The entire set of copied files can be duplicated in a new folder without any references to the source files.

Click **Start** and the Design Copy Progress dialog box opens and provides details of the operation.

Click **Close** to close the Design Copy Progress dialog box.

Go to the new folder and review the newly created copy of your design.