

Migrate custom libraries

http://wikihelp.autodesk.com/Inventor/enu/2013/Help/0000-Install/0192-Data_Mig192/0193-Data_Mig193/0198-Migrate_198

Migrate custom libraries

This section explains how to migrate customized Content Center libraries. This includes migrating customized Content Center libraries in Desktop Content and Vault Server. Confirm whether your customized Content Center libraries are Desktop Content or Vault Server first. Desktop Content was added from Inventor 2010. Check which content type is used via Application Options-->Content Center tab. See Figure 1.

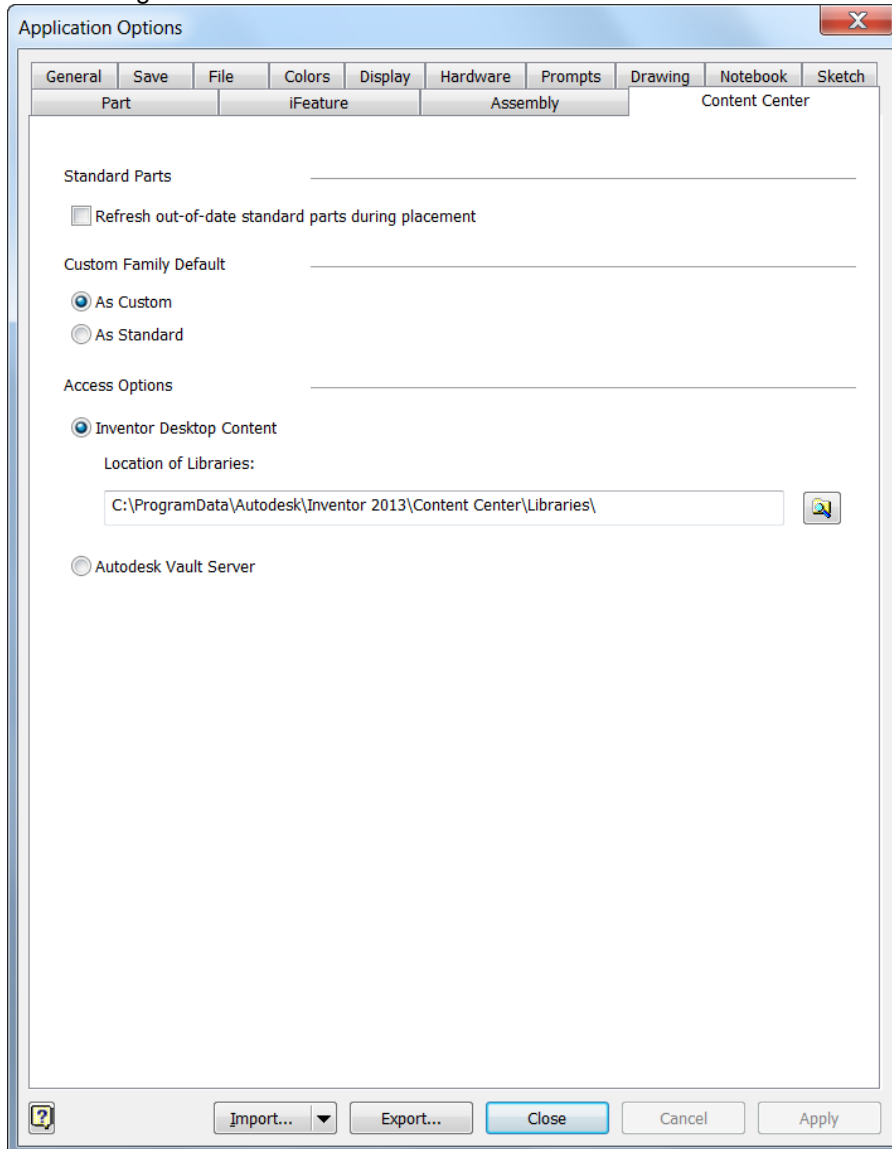


Figure 1

Note Migrate the customized styles first if the customized styles were used in component families of customized Content Center library. Go [here](#) for information on migrating a customized style library.

Migrating customized Content Center libraries in Desktop Content

Inventor Desktop Content default location is in C:\ProgramData\Autodesk\Inventor <version>\Content Center\Libraries or C:\Documents and Settings\All Users\Application Data\Autodesk\Inventor

Migrate custom libraries

http://wikihelp.autodesk.com/Inventor/enu/2013/Help/0000-Install0/0192-Data_Mig192/0193-Data_Mig193/0198-Migrate_198

<version>\Content Center\Libraries folder. You can change this default location via Application Options--> Content Center tab. See Figure 1.

Follow these steps to migrate customized Content Center library in Desktop Content:

Step 1: Copy your legacy customized Content Center library into Desktop Content location. See the Location of Libraries option in Figure 1.

Step 2: Update the legacy customized Content Center libraries by using the Update Tool in Configure Content Center libraries dialog box.

In the project dialog box, click [Configure Content Center Libraries] button. The legacy customized Content Center libraries are listed in the Configure Libraries dialog box. Note that the "In Use" column is selected. Click [Update Tool] to migrate. See Figure 2.

NoteAn exclamation mark icon in front of a library name indicates that the library cannot be used in Content Center. You must update the library with the Update Tool.

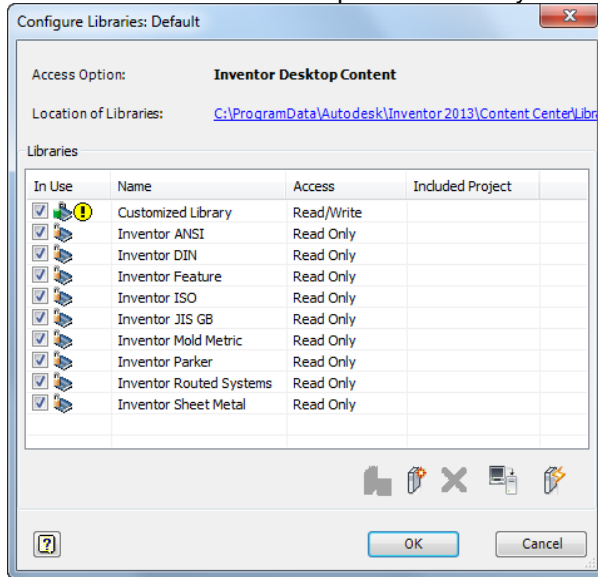


Figure 2

Step 3: In the Update Tool dialog box, is the Content Center User Libraries Update Guide. Click [Next] button step by step to finish custom libraries migration. See Figure 3.

Migrate custom libraries

http://wikihelp.autodesk.com/Inventor/enu/2013/Help/0000-Install/0192-Data_Mig192/0193-Data_Mig193/0198-Migrate_198

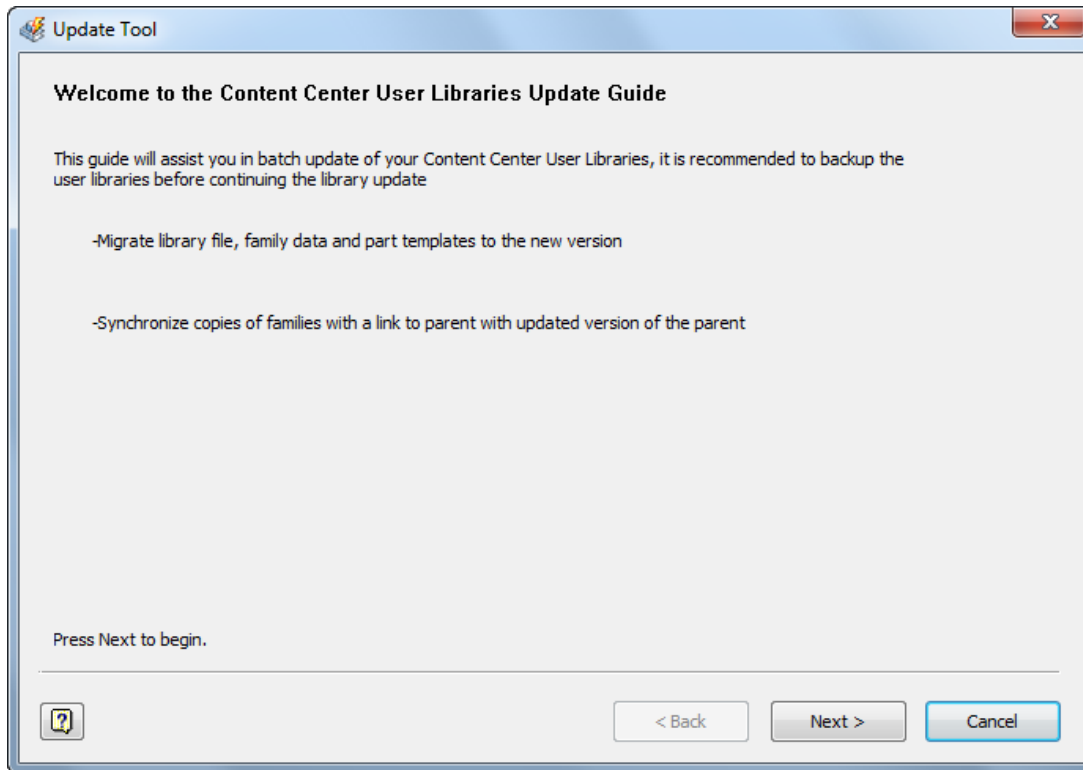


Figure 3

The Update Tool dialog box displays. Click [Next] - The legacy customized Content Center libraries that will be updated are listed. See Figure 4.

Migrate custom libraries

http://wikihelp.autodesk.com/Inventor/enu/2013/Help/0000-Install0/0192-Data_Mig192/0193-Data_Mig193/0198-Migrate_198

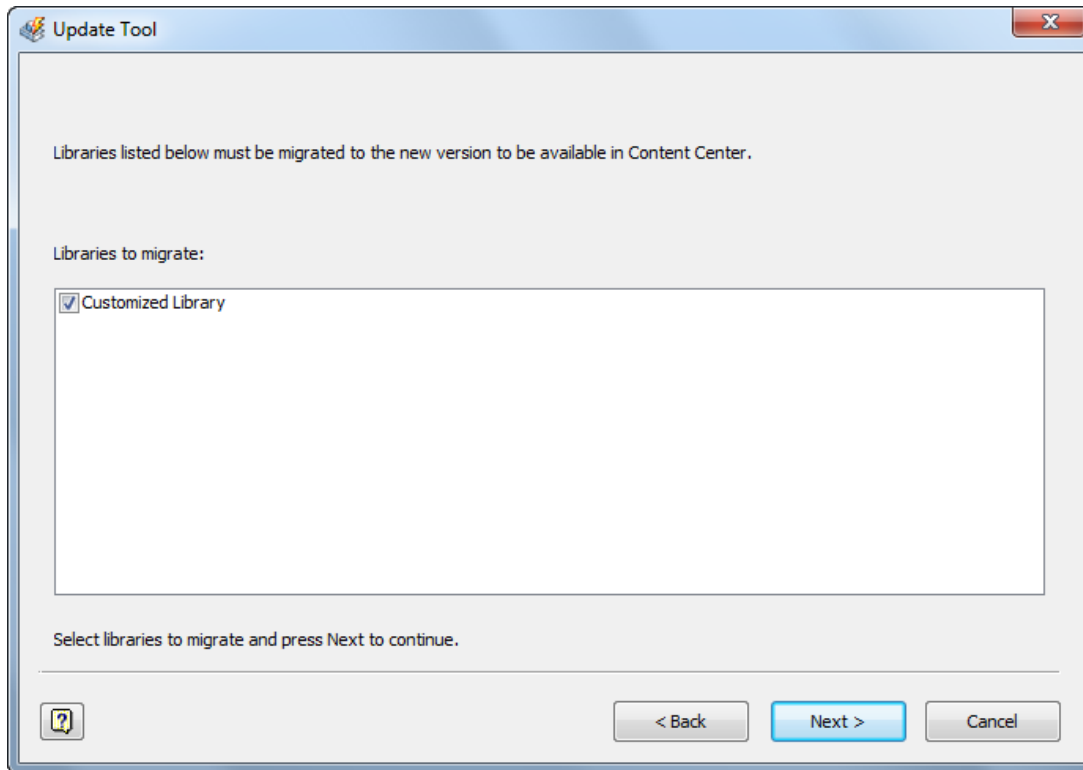


Figure 4

Select each library to update. Then click [Next].

A library analysis is performed and results of the analysis are displayed. If any problems are found, you must solve them to continue. If no problems are found, the Backup options are displayed. Specify a folder to create a backup and click Next. See Figure 5.

Migrate custom libraries

http://wikihelp.autodesk.com/Inventor/enu/2013/Help/0000-Install/0192-Data_Mig192/0193-Data_Mig193/0198-Migrate_198

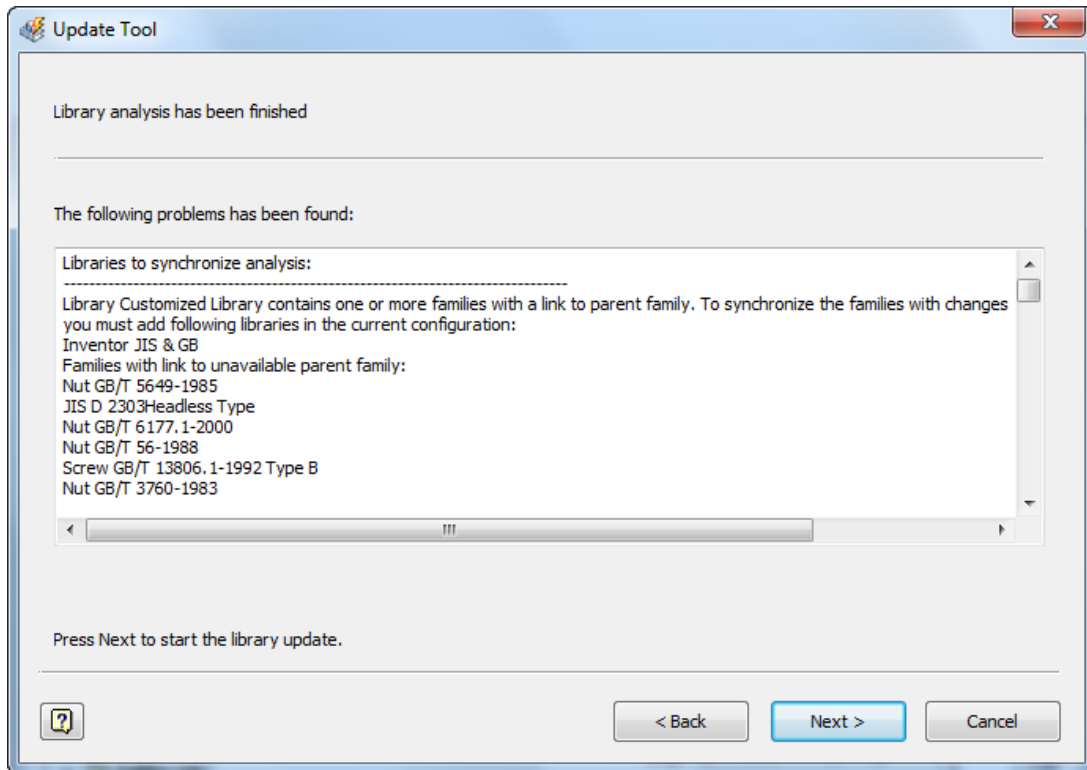


Figure 5

Note Parent (source) families can be located in standard libraries or in user libraries. All standard libraries that include parent families must be available to run the Update Tool. If a user source library cannot be found, the Update Tool completes the migration, and then updates only families whose parents are available. Updating other families is postponed. See Figure 6.

Migrate custom libraries

http://wikihelp.autodesk.com/Inventor/enu/2013/Help/0000-Install/0192-Data_Mig192/0193-Data_Mig193/0198-Migrate_198

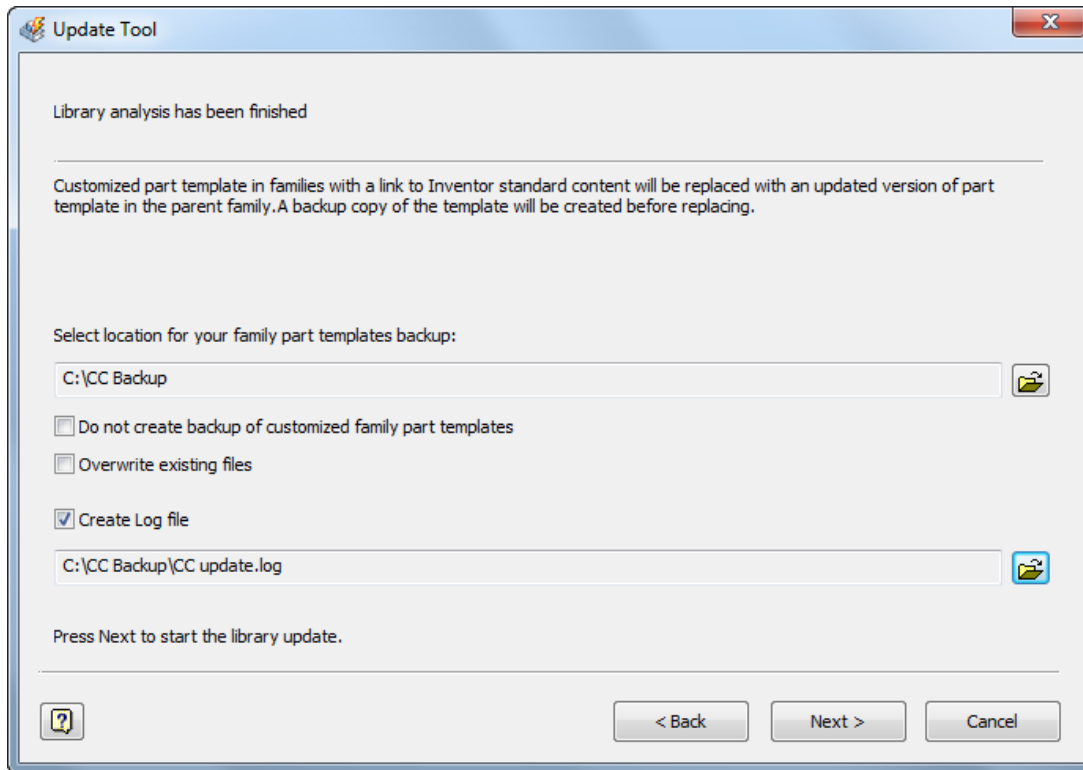


Figure 6

After the process ends, review the Update report. See Figure 7.

Tip (Cross References between Libraries): If there is a cross reference, and you have a user library (UL1) that includes source families for families in user library UL2, and UL2 includes source families for families in user library UL1, you must attach both libraries and run the update tool step by step for UL1 and UL2.

Migrate custom libraries

http://wikihelp.autodesk.com/Inventor/enu/2013/Help/0000-Installa0/0192-Data_Mig192/0193-Data_Mig193/0198-Migrate_198

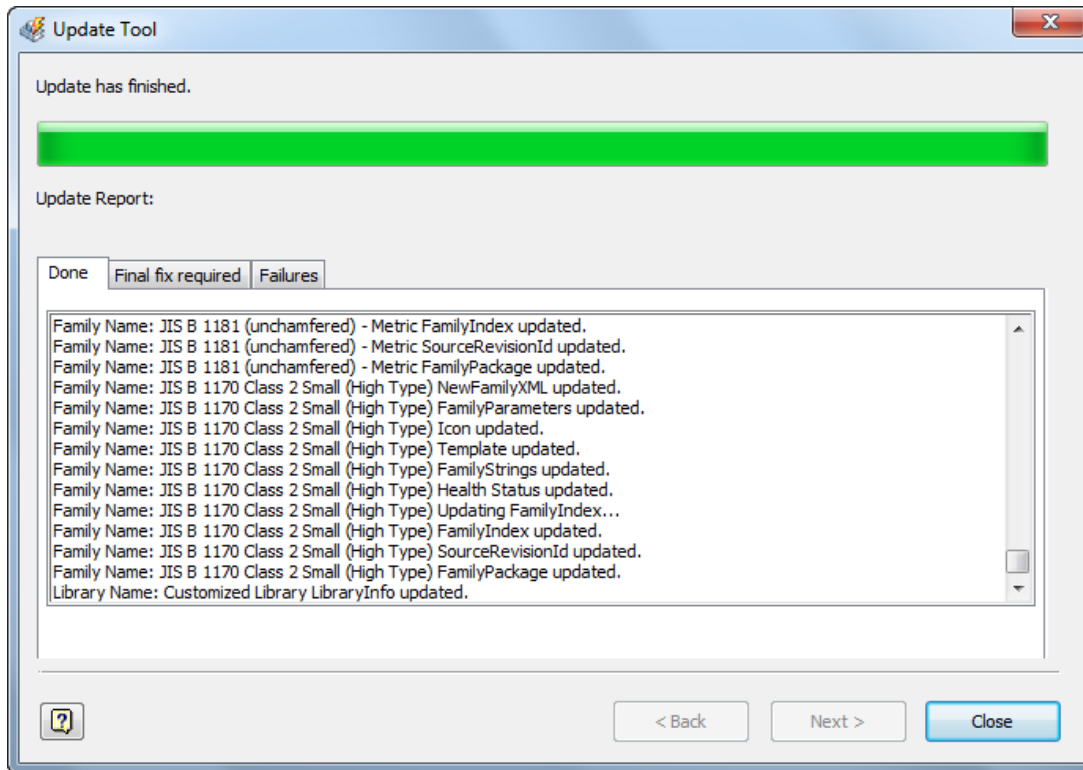


Figure 7

Fix all sick families in the updated library (libraries). Sick families are marked with an icon in the Place from Content Center and Content Center Editor dialog boxes. They can be used in Content Center, but sick family members may cause unexpected problems.

Migrating customized CC library in Vault Server

The migration of the customized CC library is done in two steps. The first step is to migrate the Autodesk Data Management Server (ADMS). The second step is to update the customized CC library to the new version of Inventor and refresh the legacy assemblies.

Perform the following steps to migrate customized CC library in Vault Server:

- Use ADMS Console to create a backup.
- Uninstall the existing ADMS, and then install the new version of ADMS and Inventor.
- Migrate legacy customized CC libraries to the new version of ADMS.
- Copy legacy customized CC libraries to new Inventor partition the ADMS Console.
- Click [Configure Content Center libraries] button in the Inventor project.
- Update legacy customized CC libraries by using Update Tool in Configure Content Center libraries dialog.
- Refresh Content Center parts in legacy assemblies.

Step 1: Use ADMS Console to create a backup

Back up all ADMS data before you upgrade ADMS. Run ADMS Console, and select Tools > Backup from the ADMS Console menu. The Backup tool creates a backup of all libraries and vaults.

Migrate custom libraries

http://wikihelp.autodesk.com/Inventor/enu/2013/Help/0000-Installa0/0192-Data_Mig192/0193-Data_Mig193/0198-Migrate_198

Note If the ADMS database is corrupted, use the backup file to restore ADMS data and configuration as they existed at the backup time. In ADMS Console, click Tools>Restore from the menu.

Step 2: Uninstall existing ADMS, and then install new version of ADMS and Inventor.

Please refer ADMS and Inventor installation documents for detail information.

Step 3: Migrate legacy Content Center libraries to the new version of ADMS.

Usually it will automated migrate legacy customized CC libraries to the new version of ADMS when you import it or restore backup of old ADMS version.

Step 4: Copy legacy customized CC libraries to new Inventor partition on the ADMS Console After a legacy customized CC library is migrated to new version of ADMS (during the installation or manually), You must copy legacy customized CC libraries partition into new version partition to use them with Autodesk Inventor new version. See following steps:

- Run ADMS Console.
- In the ADMS Console window, expand Libraries, and right-click a library to copy. See Figure 8.

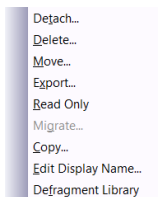


Figure 8

- In the Copy Library dialog box, enter the library name, select Autodesk Inventor 2013 partition, and click OK. The library is copied into Autodesk Inventor 2013 partition. See Figure 9.

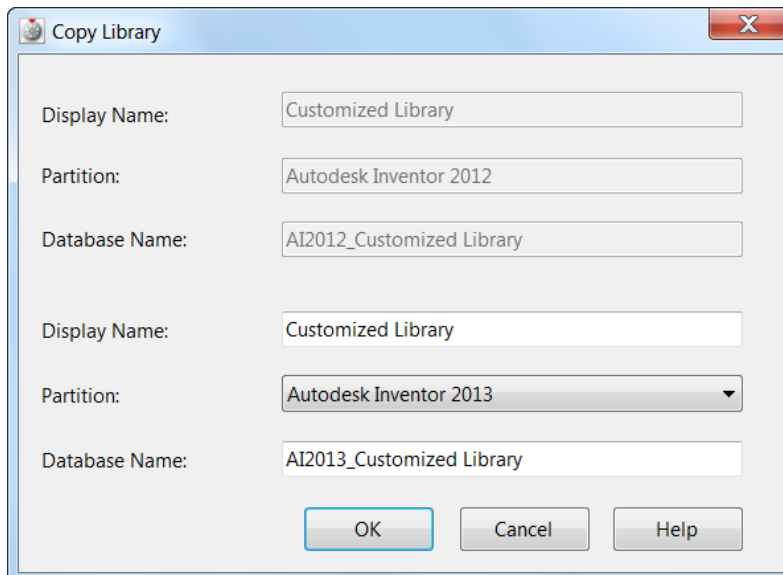


Figure 9

Migrate custom libraries

http://wikihelp.autodesk.com/Inventor/enu/2013/Help/0000-Install/0192-Data_Mig192/0193-Data_Mig193/0198-Migrate_198

Note After you finish, all libraries you want to use with Autodesk Inventor 2013 must be available in the Autodesk Inventor 2013 partition.

Step 5: Update legacy customized CC libraries by using Update Tool in Configure Content Center libraries dialog.

This step is the same with update legacy customized CC libraries in Desktop Content.