

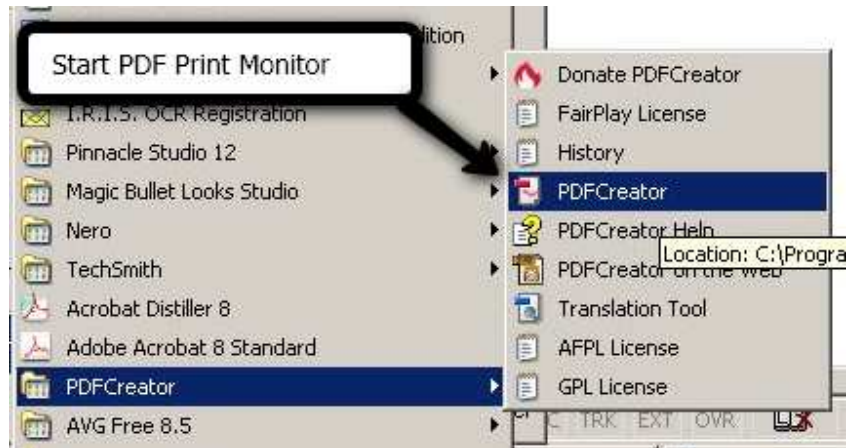
How to batch convert your IDW's to PDF's

Here is a tutorial that will explain how to use the Autodesk Task Scheduler (TS) to get your idws converted to PDF's. This will allow you to setup a list of idws that can be run at anytime and re-ran if changes occur. In order to do this, there is several pieces software that are required.

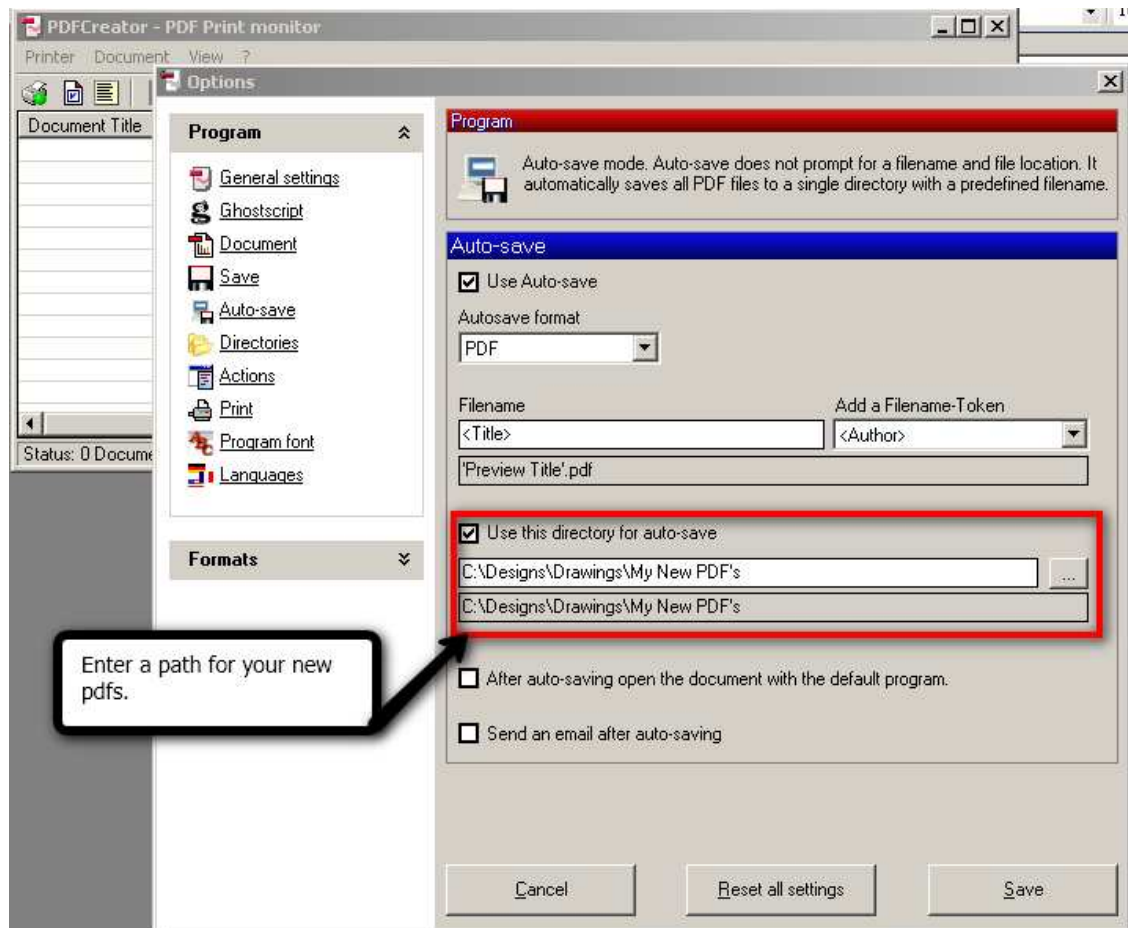
1. Autodesk Task Scheduler (of course).
2. Adobe Acrobat. I use Version 8
3. PDF Creator. I am using Version 0.9.8 here

Install and setup PDF Creator.

The PDF Creator is an open source program that you can install without having to register it. You can download it from www.pdfforge.org. If you do find this useful, they do accept donations. After it is installed start the PDF monitor.



Now in the PDF Print monitor, select Printer > Options. In the Programs tab, select the Auto-Save link. Check the “Use Auto-save” box. Also, check the “Use this directory for auto-save” box and select a directory that the new pdf’s will be written to.

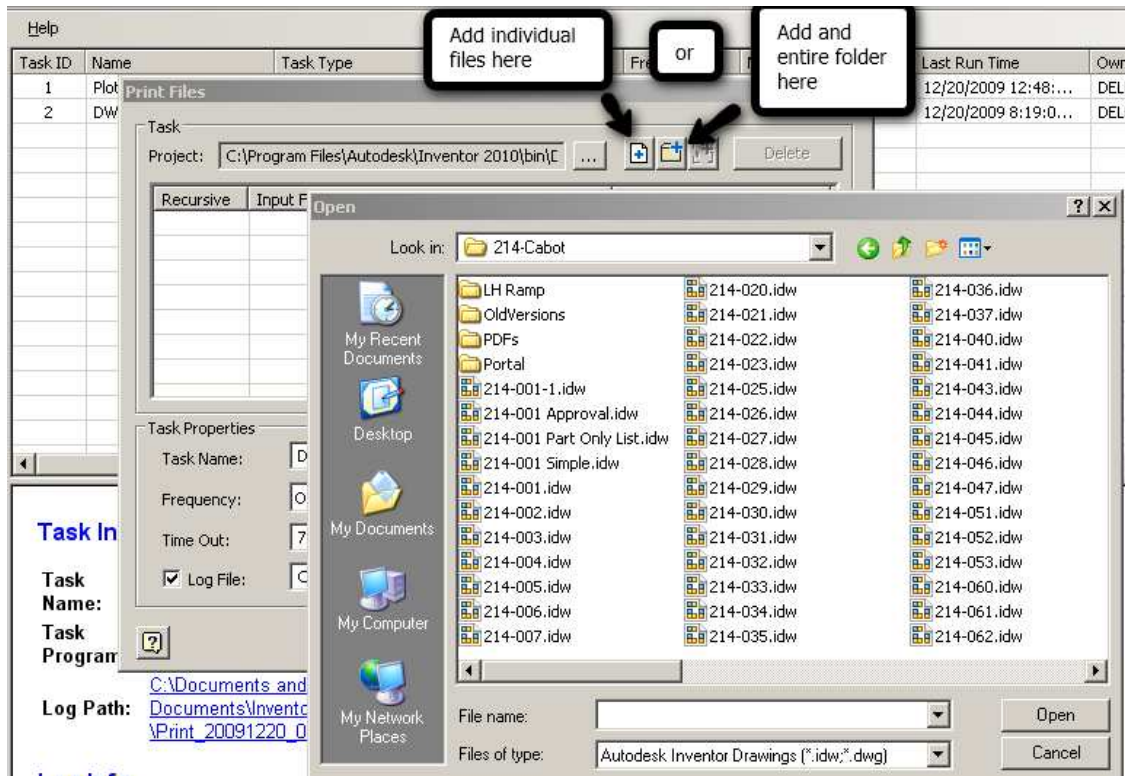


You may also want to change the filename field from the default. I have set mine to the <Title> for the filename. This will save the pdf as the filename of my idw.

Now click the “Save” button and back out of this. We are finished with this so you can close it.

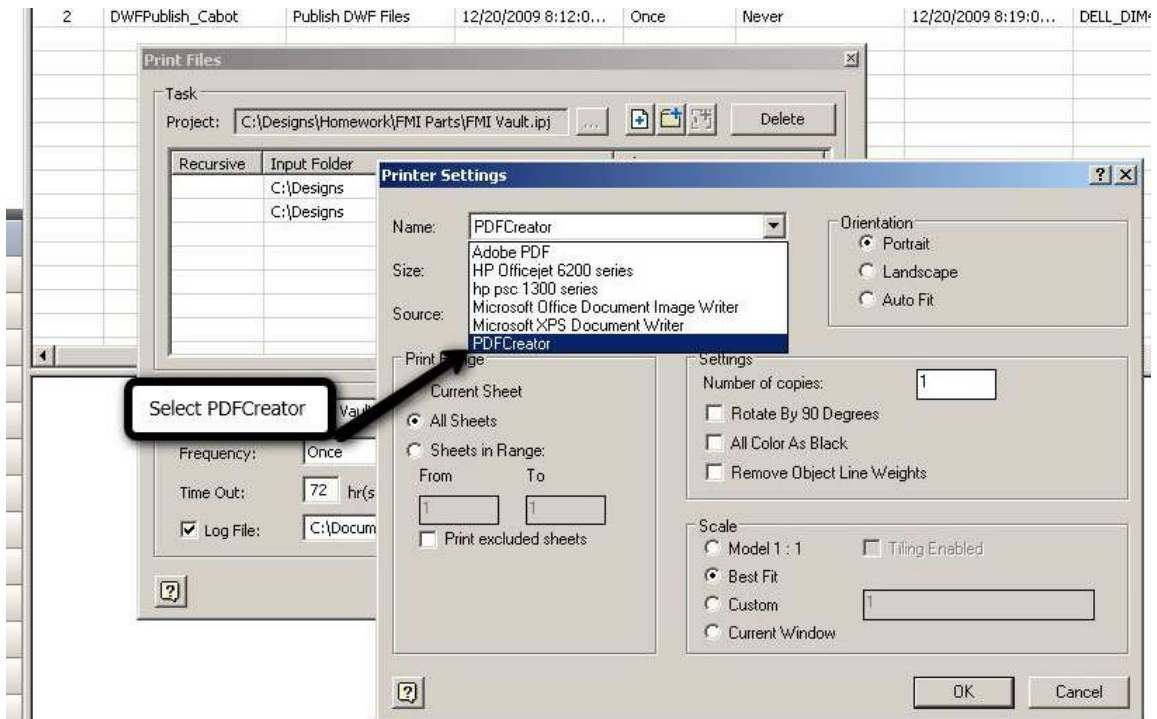
Autodesk Task Scheduler

Start the TS, then select Create Task. Now select Print files and select your project file. Now browse through the folders and add the idws that you want to print. You can add individual files or you can add entire folders to the job.



You may want to change the Task Name in the Task Properties area and give the task a meaningful name.

After you have all the files added, select one of the files and the “options” button should illuminate. Click it and then select the “PDFCreator” from the drop-down. You can set the paper size, orientation and scale here. This setting will apply to all files that are in this task, i.e., you can’t have some of the files printed on one sheet size and some on another. If the idws on your list are varying sizes, don’t worry about this now. (See the tips and the very end of this tutorial) For purposes of illustrating this workflow, just select two or three idws.



Now set the time that you want this task to run. If you check the “Run Immediately” box, the task will run as soon as you click “OK” to close this Print Files dialog. After the task completes, browse to the folder location that you set in the PDF Creator Auto-Save location. You should see your PDF’s in this folder.

It may be a good time now to review the error log that TS creates. Double click on the log path to open the log file.

Task ID	Name	Task Type	Schedule at	Frequency
1	Plot Cabot Prints	Print Files	12/15/2009 5:50:0...	Once
2	DWFPublish_Cabot	Publish DWF Files	12/20/2009 8:12:0...	Once

Task Info


Task Name: Plot Cabot Prints **Sch Tim**

Task Program: C:\Program Files\Autodesk\Inventor 2010
 \bin\ServiceModule.exe **Tasl**

Log Path: [C:\Documents and Settings\Kevin Arthur\My Documents\Inventor\Task Scheduler\2010\Print_20091220_004817.log](#)

Log Info

12/15/2009 5:51:20 PM Task Completed.



When this opens, scroll down to the end of the file. If there are any files that did not print, they will be listed here.

```
-----Task Summary-----
This task has processed 64 file(s) out of which 2 file(s) failed.
Errors encountered as follows:
C:\Designs\Drawings\214\214-150.idw--File has unresolved references.
C:\Designs\Drawings\214\214-156.idw--File has unresolved references.
-----

Task finished.
-----Task Scheduler End Time:12/20/2009 12:58:12 AM -----
```

