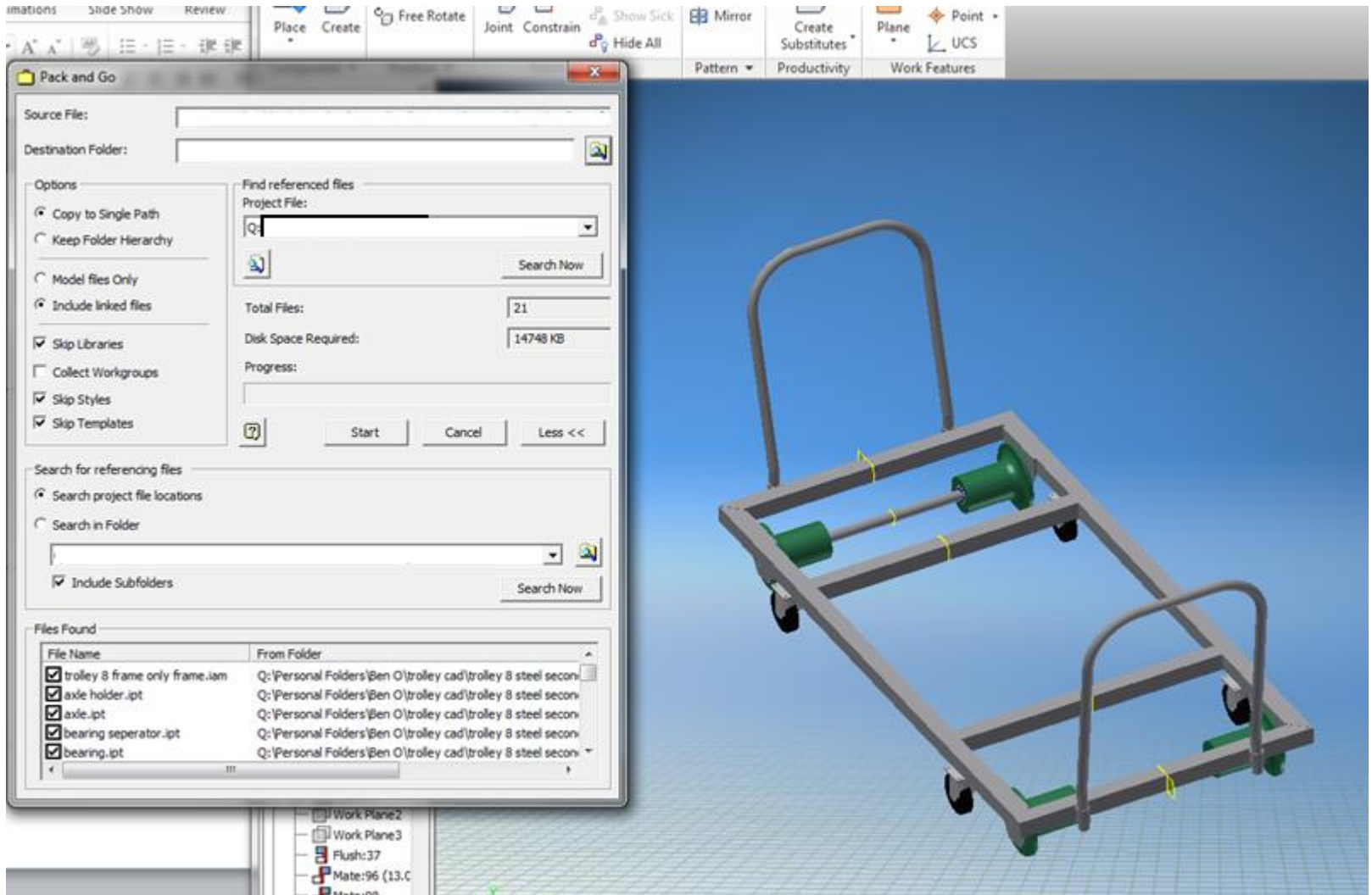


# Pack and Go

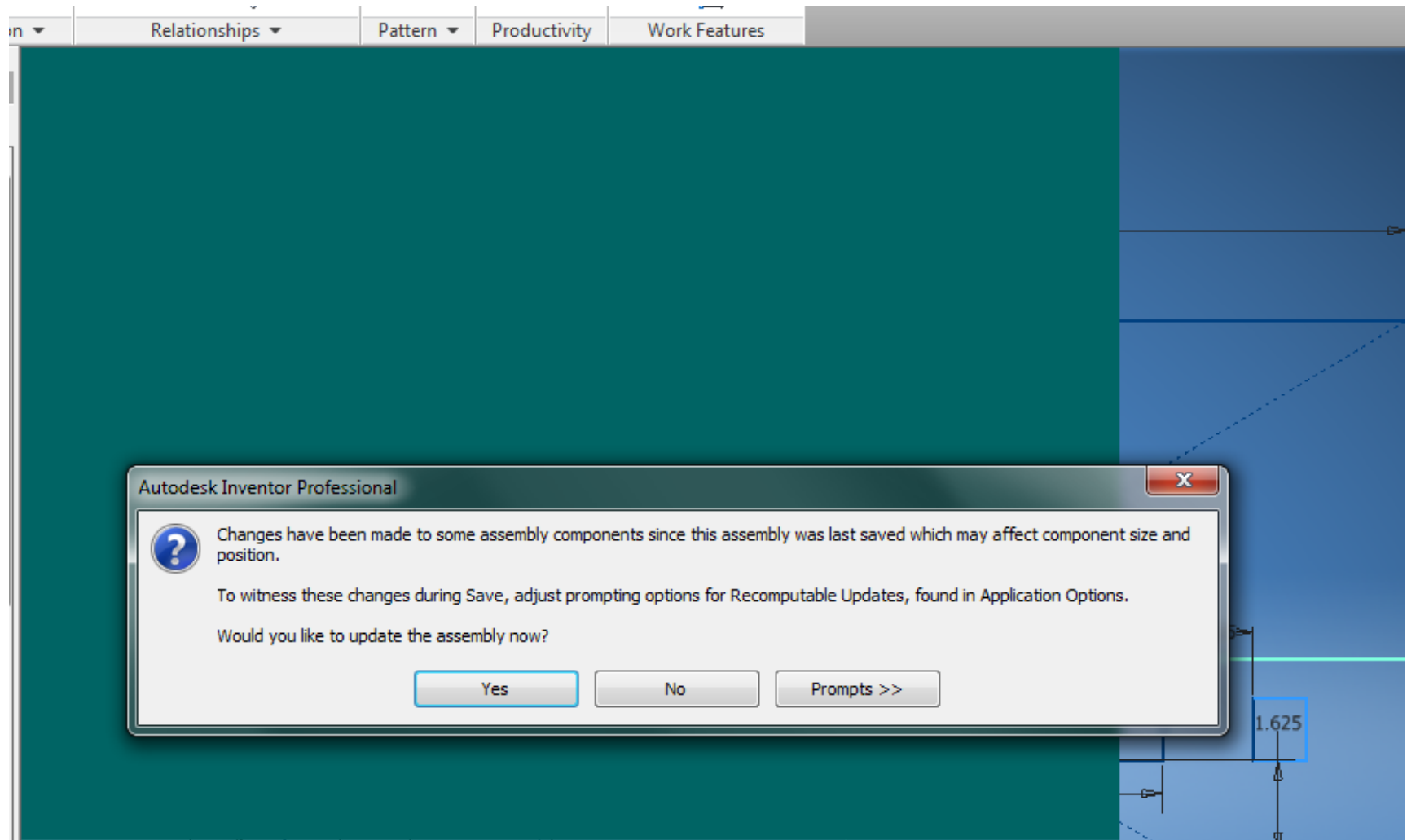


After using the pack and go function, I now change the dimensions of the original cart and increase its width.

(This is another huge gripe of mine about inventor. Those two mid beams are using the “between” extrude function... Why the \*\*\*\* do they not update automatically, I have to go back in and redo that extrude Every. Single. Time.)



- I now close the original and open the newly created pack and go. And this comes up.



- The new pack and go trolley has been changed to match the original, for reasons unknown to me.

