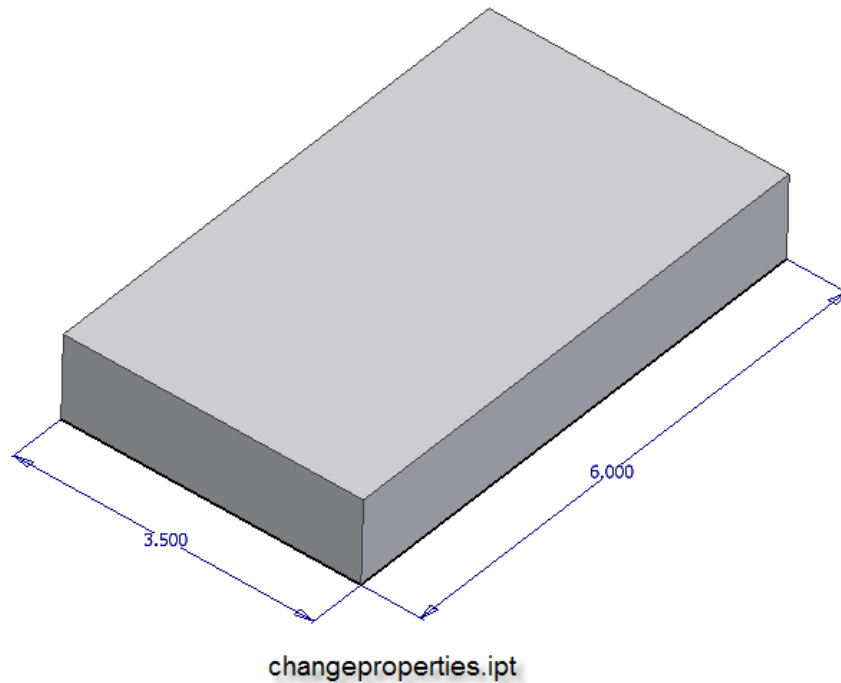


Changing the Color of a Model.

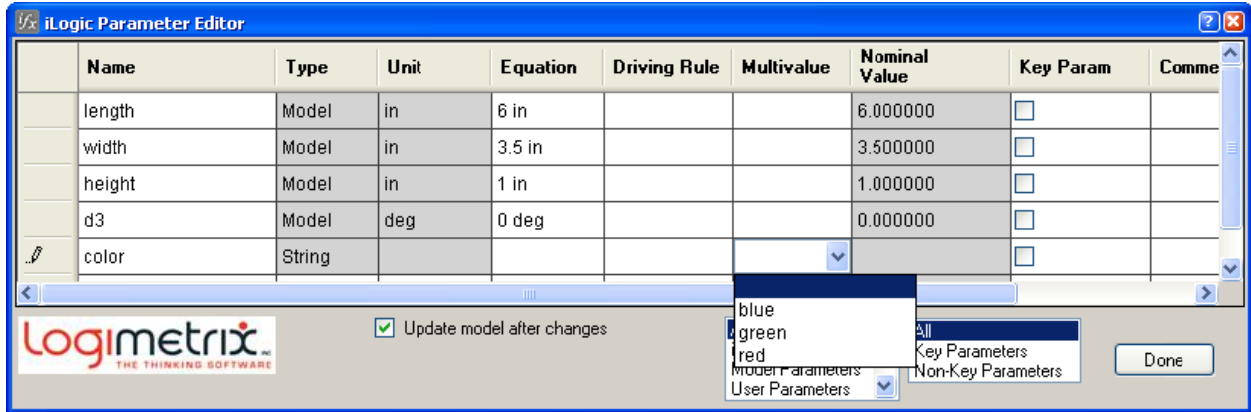
Open the Inventor part file called *changeproperties.ipt*. The model is a rectangular block.



Click on the Parameters icon on the iLogic toolbar to open the Parameters dialog box.



There is a multivalue string variable called color with the values blue, green and red.

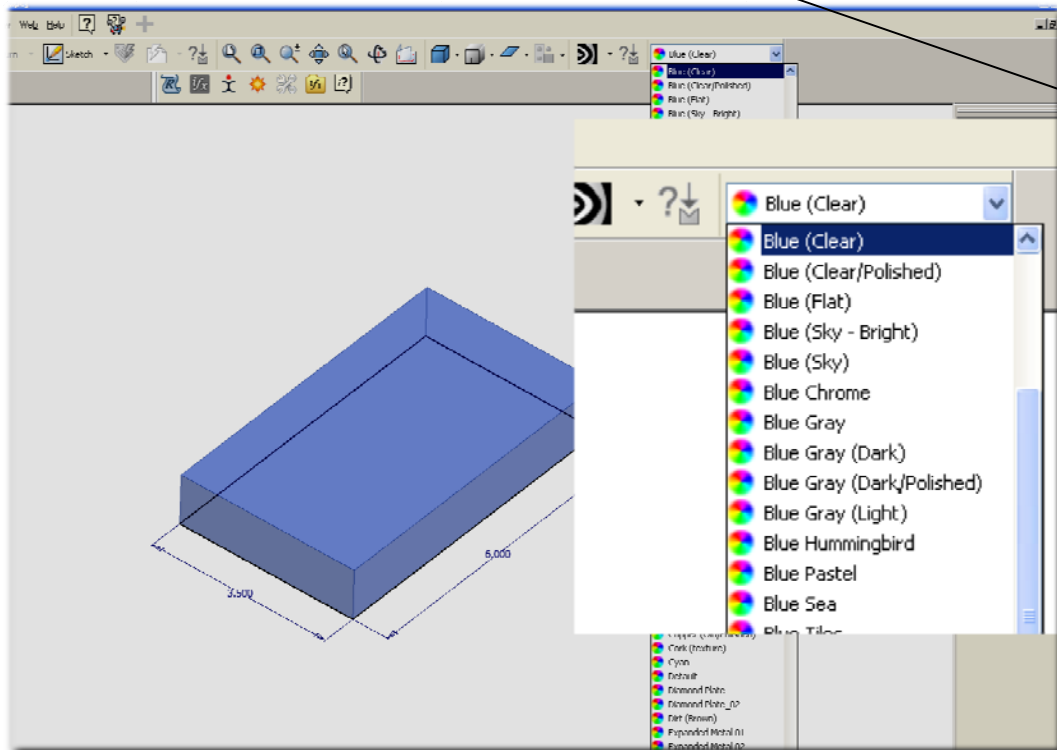


We will construct a rule that will modify the color of the model based on the value chosen for the parameter called color. This will be done with a series of if/then statements.

Open the Rule Editor by clicking on the Add Rule Icon on the iLogic Toolbar. Name the rule "Color Rule"

The first case to consider is when the value of the color parameter is blue. The lines to take care of this case are.

if color = "blue" **then**
iProperties.PartColor = "Blue (Clear)"



It is very important that color name you type matches exactly a color listed in the drop menu as shown in the screen capture to the left. ie "Blue(Clear)"

The second case to consider is when the value of the color parameter is "green". The following two lines deal with this case.

```
Elself color = "green" then  
iProperties.PartColor = "Green (Clear)"
```

The third and final possibility to consider is when color = "red". The following two lines handle this case.

```
Elself color = "red" then  
iProperties.PartColor = "Red (Clear)"
```

After all of the cases have been dealt with, an end if statement is added.

End If

Open the Parameter Editor and change the value of the color parameter. Observe the change in the model.

