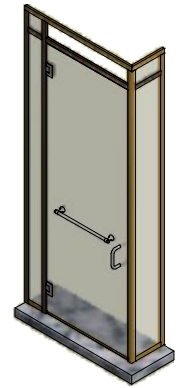
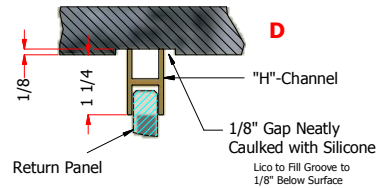
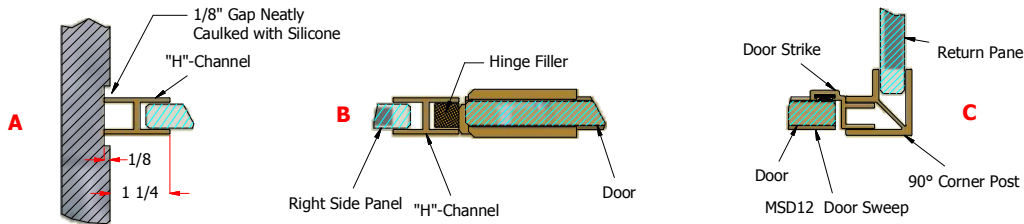
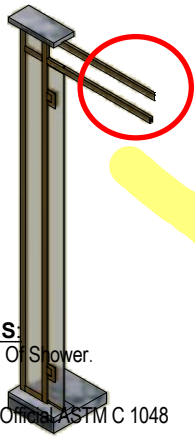


FINISH	Matte 24K Gold Plated
MATERIAL	Architectural Bronze 385 (ASTMB455)
GLASS TYPE	1/2" Starphire Tempered
HEADER/TOP RAIL	MSD313SB 1-3/8" Channel
UNIT HEIGHT	94-1/2" OAH
DOOR WIDTH	30"
PULL TYPE	18 Overture TB (FBO) / 6" Standard
PULL HEIGHT	40-1/4" AFF / 36" AFF

Lico to Fill Groove to 1/8" Below Surface



ISO

**GENERAL NOTES:**

**VIEW:** Unit Drawn From Outside Of Shower.

**DOOR:** Door Opens Out Only.

**GLASS:** Each Lite Will Have an Original ASTM C 1048 Temper Stamp.

**HARDWARE:** Finishes Are To Industry Standards and Will Not Necessarily Be An Exact Match To Other Bathroom Hardware Unless A Sample Has Been Submitted To Mr. Shower Door Prior To The Fabrication of This Unit. Custom Finishes Will Incur Extra Charge.

**NOTE:** Fully Framed Shower Doors Are Designed And Built With Gaps For Panel Adjustment While Assembling In The Field.

**THIS DOCUMENT SUPERSEDES ALL OTHER PROPOSALS, CUSTOMER SKETCHES, SUBMITTALS & RELATED ITEMS. UNIT WILL BE FABRICATED TO THE SIZES & DETAILS SHOWN. NO EXCEPTIONS.**

**SIGNATURE DOES NOT GUARANTEE THAT UNIT WILL GO INTO PRODUCTION UNLESS A 50% DEPOSIT AND A SIGNED PROPOSAL HAVE BEEN RECEIVED.**

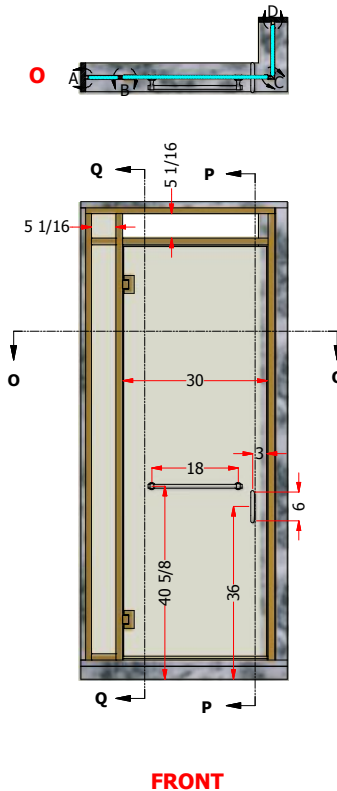
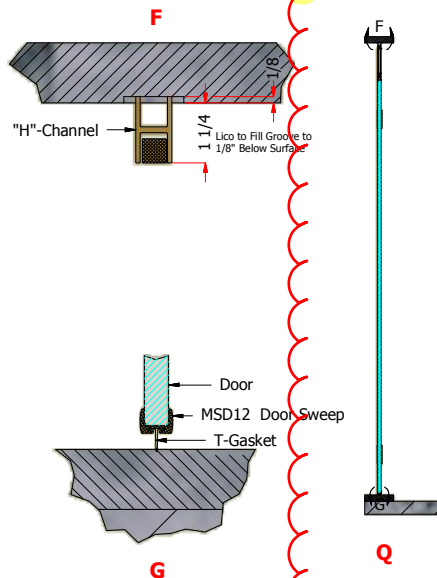
**CUSTOMER APPROVAL AREA**

Print Name: \_\_\_\_\_

Signature \_\_\_\_\_

Date: \_\_\_\_\_

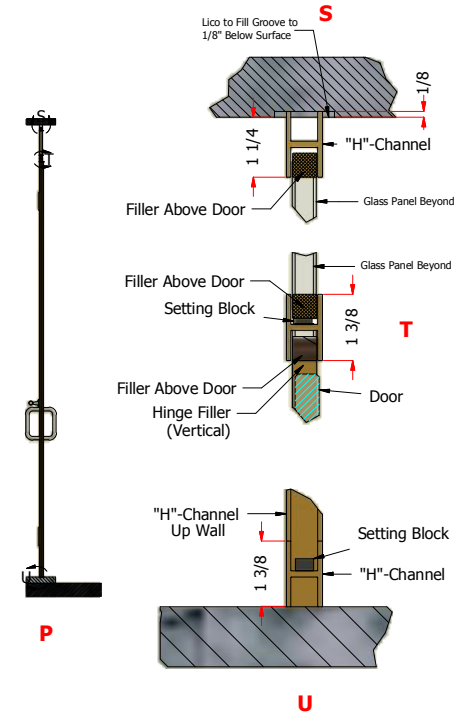
**DOOR SECTION DETAIL**



FRONT

RETURN

**FIXED PANEL SECTION DETAIL**



P

U



260 Hathaway Drive  
Stratford, CT 06615  
(800) 633-3667 ph  
(203) 386-0311 fax

DRAWN BY:  
Steve Frey

REV #

DIMENSIONAL (BILLABLE)  
TYPOGRAPHICAL (NON-BILLABLE)

CONTRACTOR/COMPANY:

**Visit Us Online @ [www.mrshowerdoor.com](http://www.mrshowerdoor.com)**

JOB NAME:

Drawings And Specifications, As Instruments of Professional Service, Are And Shall Remain The Property of Mr. Shower Door, Incorporated. No Portion of this document may be reproduced without the written permission of Mr. ShowerDoor, Inc.

BATH LOCATION:  
**Her Bath #122**

DRAWING DATE:  
**01-15-14**

Any Alterations To This Document Are **Non-Binding**. Any Alterations To This Document Are **Non-Binding**.