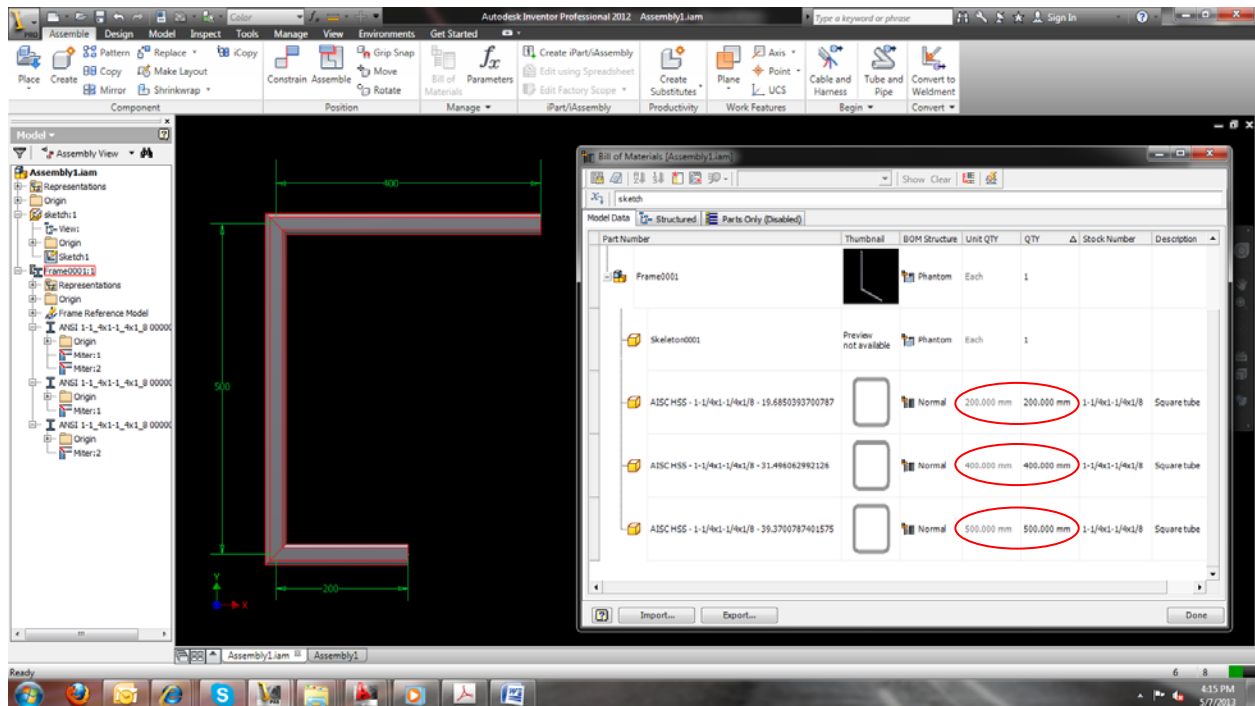
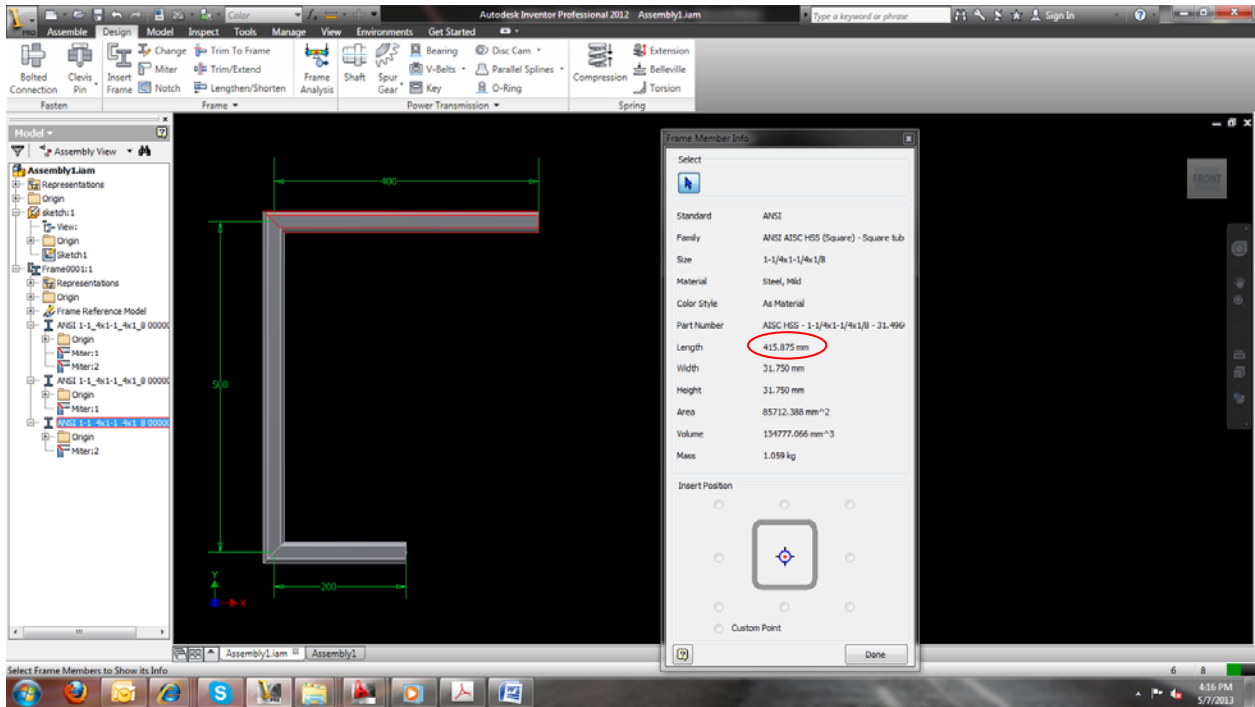


- At first, I created a reference sketch of dimensions 400x500x200.
- This sketch was then imported to assembly drawing file. (i.e. \*.iam)
- Then rectangle frame member is inserted at each leg of reference sketch.
- These frames are then mitered at their intersection as shown in snap-1.



### Snap-1: assembly drawing with frame members & BOM part list

- When BOM part list was created for this assembly,
- Frame member dimensions shown in table were the same as its reference sketch leg dimension.
- But since these frame members are mitered at intersection, their dimension should be more than reference sketch leg dimension.
- This desired dimension appears in frame member info. See snap-2.
- For e.g. actual member dimension of upper horizontal member in sketch is 415.875mm (see snap-2) but BOM part list shows dimension for same member as 400mm (see snap-1).
- Can u tell me how to get this actual frame dimension in BOM part list?



Snap-2: assembly drawing with frame member info