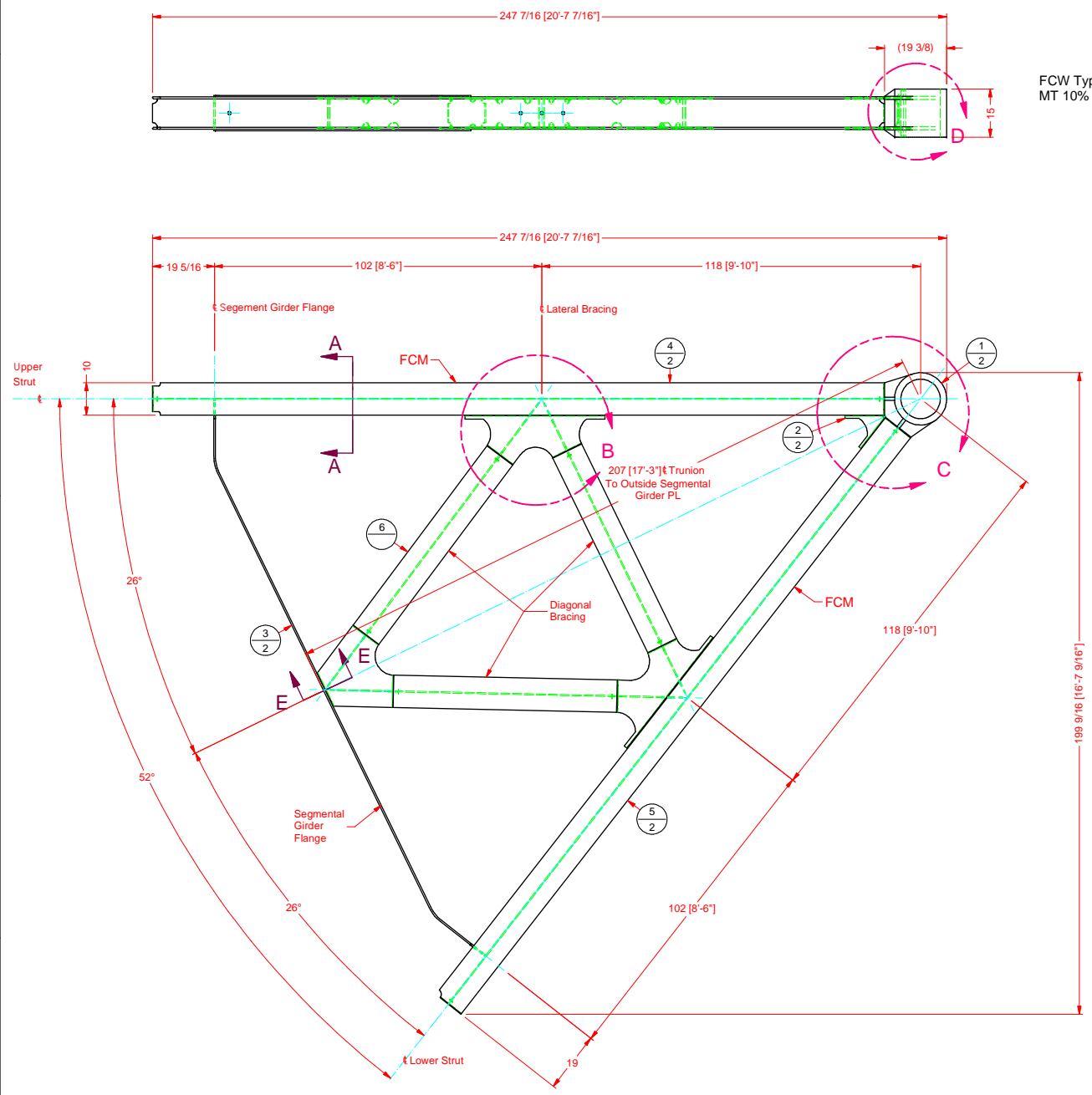
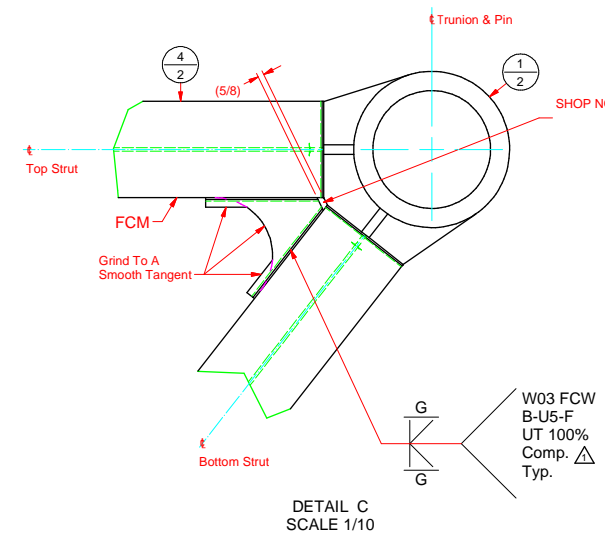
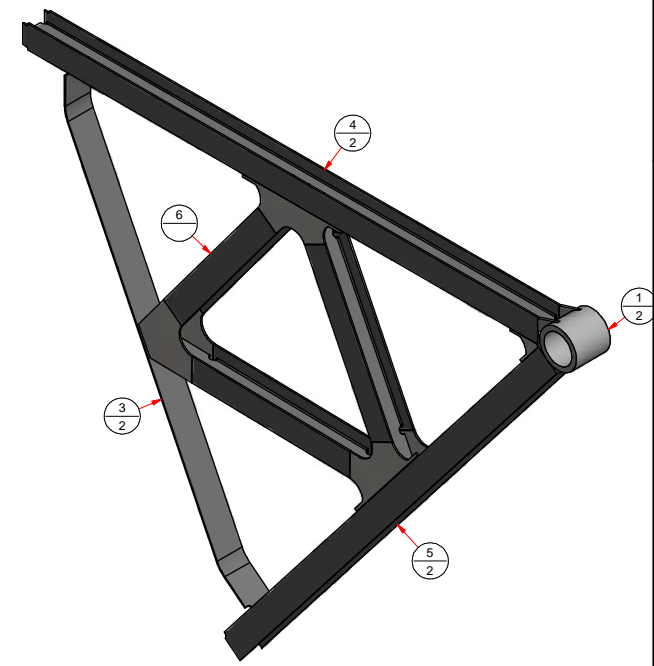
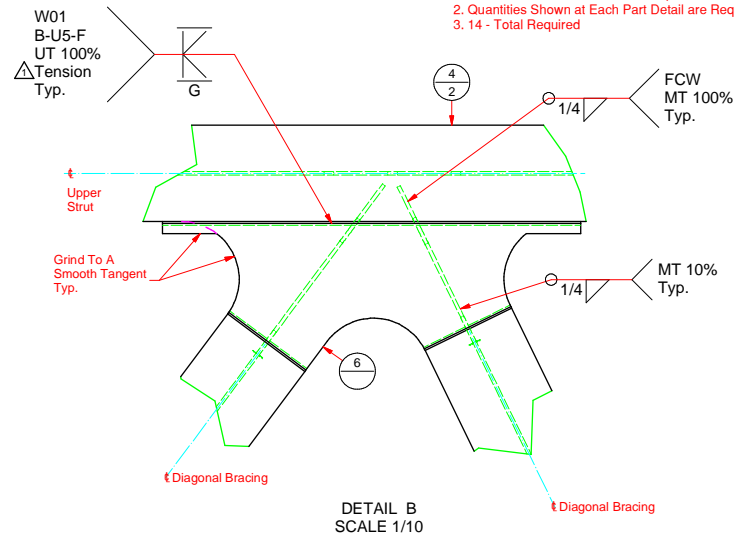
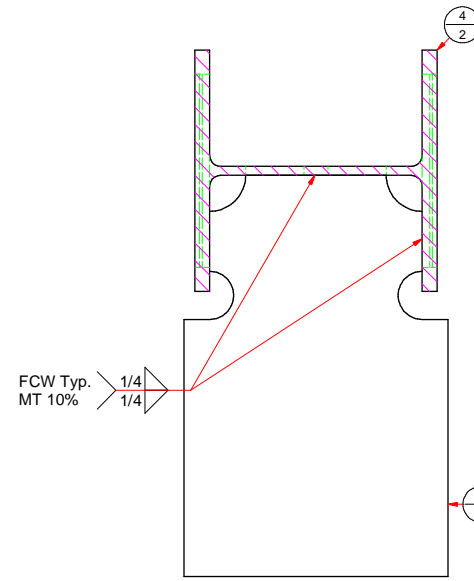


| MATERIAL LIST FOR ONE ASSEMBLY | | | | | | | | | |
|--------------------------------|--------------|-----|--------------------|-------------|----------|--|----------|---------|--|
| ITEM | PART NUMBER | QTY | DESCRIPTION | CUT LENGTH | WT.(lbs) | MATERIAL | COMMENTS | SHEET # | |
| 1 | G4004-103-01 | 1 | Trunnion Casting | | 445.0 | ASTM A148, Gr.105-85 | | 2 | |
| 2 | G4004-103-Pa | 2 | PL 9/16 x 10 15/16 | 11 1/16 in | 6.3 | Steel, Structural, ASTM A709, Gr.50-T2 | | 2 | |
| 3 | G4004-103-Pb | 1 | PL 1/2 x 11 1/2 | 196 7/16 in | 300.9 | Steel, Structural, ASTM A709, Gr.50-T2 | | 2 | |
| 4 | G4004-103-Wa | 1 | W10x54 | 228 1/8 in | 1018.4 | Steel, Structural, ASTM A709, Gr.50-F2 | | 2 | |
| 5 | G4004-103-Wb | 1 | W10x54 | 227 3/4 in | 1017.9 | Steel, Structural, ASTM A709, Gr.50-F2 | | 2 | |
| 6 | G4004-104 | 1 | | | 1409.1 | | | 2 | |

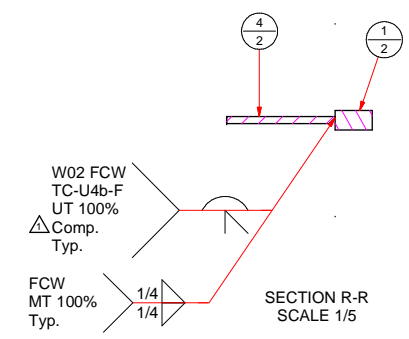
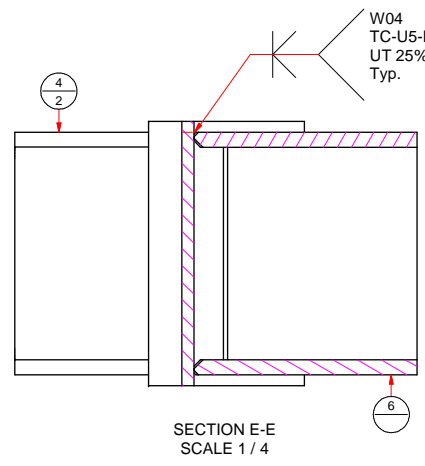
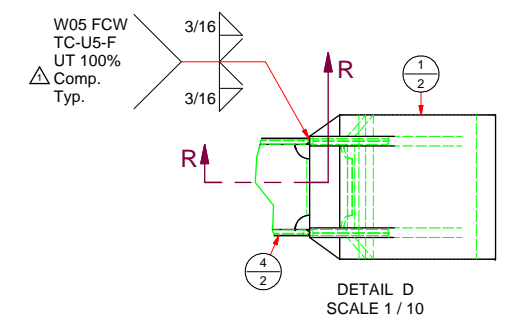
Quantity Note:
 1. Quantities Shown in BOM are Required to Build (1) Lock 27 Culvert Valve Side Strut Weldment
 2. Quantities Shown at Each Part Detail are Required to Build (1) Lock 27 Culvert Valve Side Strut Weldment
 3. 14 - Total Required



G4004-103
Lock 27 Culvert Valve
Side Strut Weldment
 Scale: 1 / 25
 2 - Required Per Culvert Valve
 14 - Total Required



SHOP NOTE: TO TERMINATE WELD AT THIS LOCATION DRILL Ø1" THRU WHEN SET UP TO BORE TRUNNION



| | | | |
|-----|----------|-----|---|
| 1 | 04/24/09 | JDP | Made Corrections Per CGE Visit on 4/15/09 and RFI-009 |
| 0 | 03/20/09 | JDP | RELEASED TO SHOP |
| A | 02/19/09 | RJW | Approval |
| Rev | Date | By | Explanation |

G & G STEEL, Inc.

15825 Hwy 241 - Russellville, AL 35661 - Phone (256) 332-6652 Fax: (256) 332-0143
 www.GGSteel.com

Lock 27 Culvert Valve Side Strut Weldment

Scale: Contract No. Drawing Number
 Drawn by: R.Wesson Approved by: G4004-103-Sht1
 Date: 12/15/2008 Weight: 4203.94 lbmass Sheet 1 of 2
 This print is the property of G&G Steel, Inc. and must be returned upon demand. This drawing may not be copied or used for any other purpose without the written consent of G&G Steel, Inc.