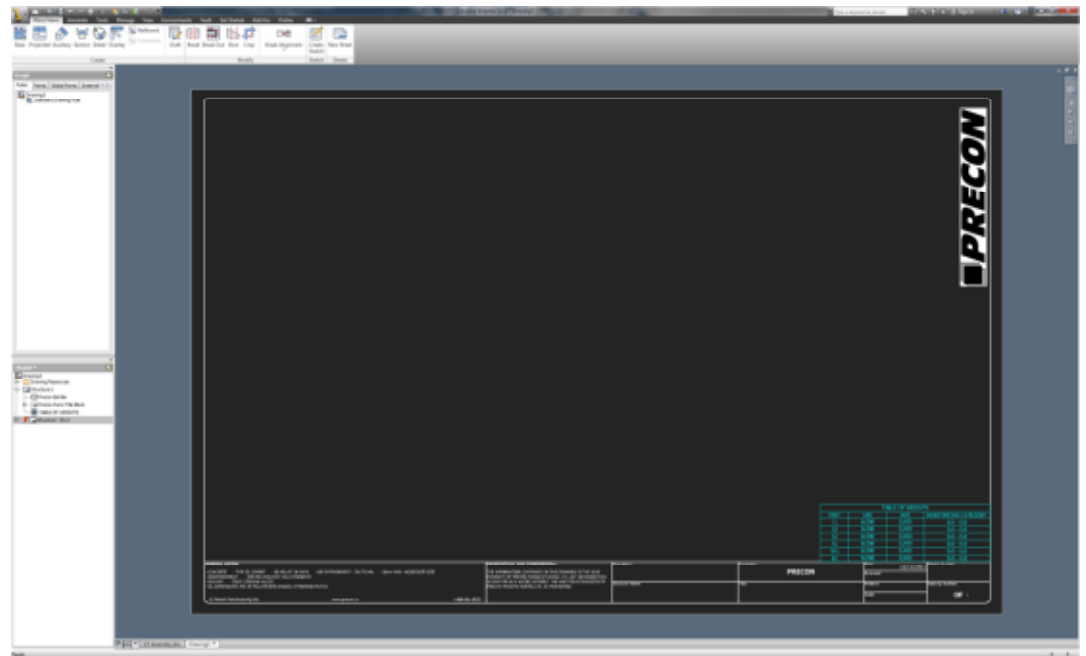
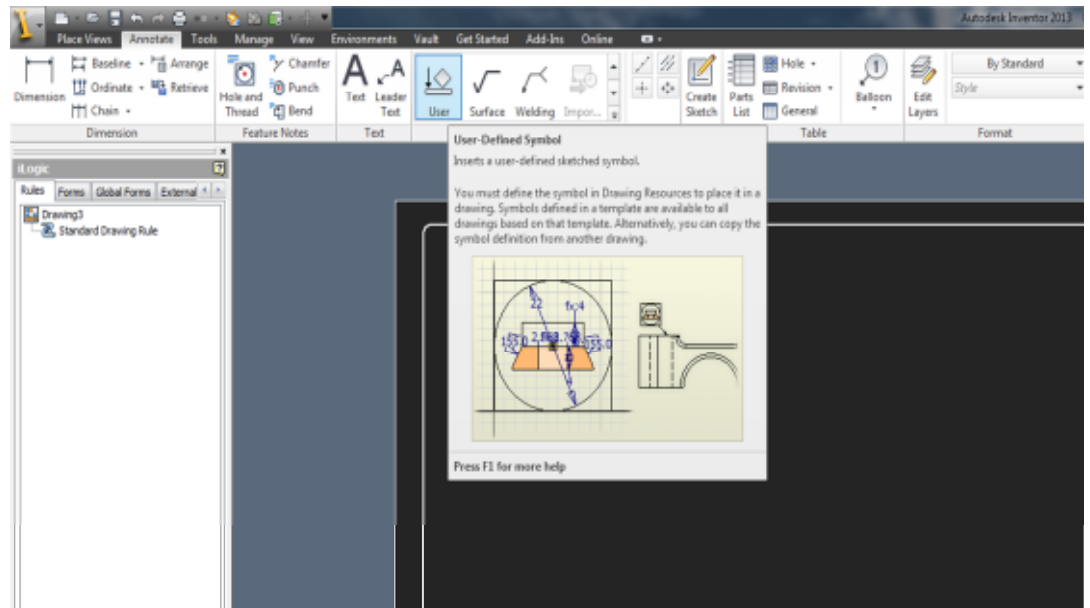


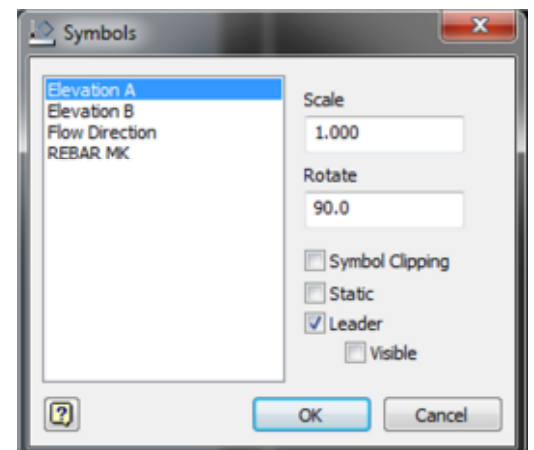
I have a new drawing.



I select User-Defined Symbol to insert a symbol I have created.

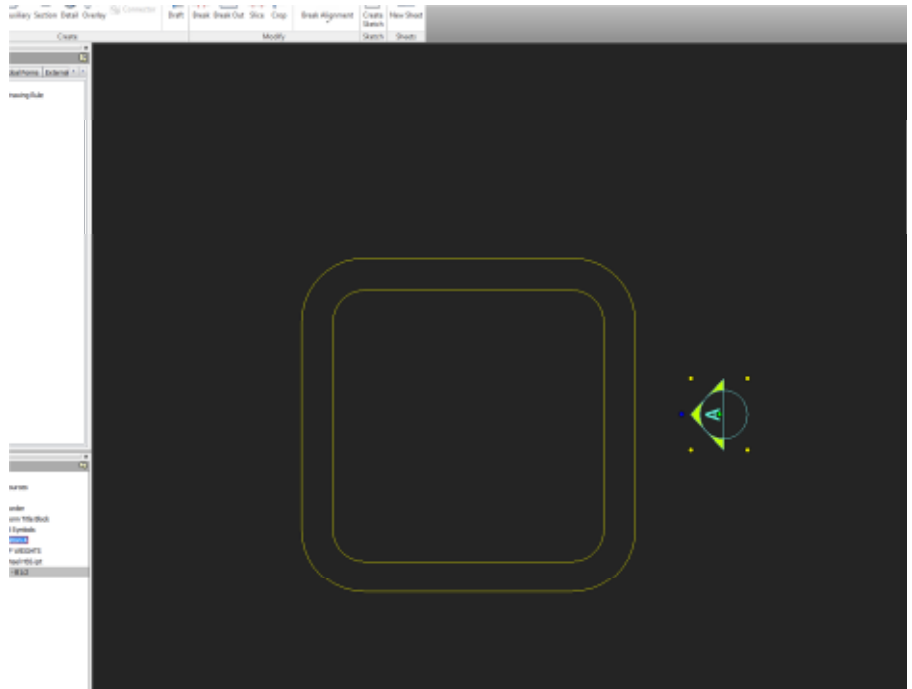


Just for illustration I selected one I have already created, "Elevation A".



I am looking for a way to constrain the inserted symbol to geometry from the view. In this case, let's say I want the center of the symbol to always be 25mm from the outer right edge of the square.

To further that, I want to know how to show the 25mm as a dimension.



Maybe if I explain the situation....

My company is a precast concrete manufacturer. We are still in the process of migrating our library completely over to Inventor. We currently have our entire product line working in Inventor, but the reinforcing/production drawings are still in 2D. Instead of bogging down our computers with rebar and other structural members that are not even visible, we have been creating sketches on the drawings to show the reinforcing. This is quite repetitive as you can imagine. So I came up with the idea to just create symbols or blocks and insert them as needed. But this idea crashed and burned once I realized I couldn't place them in specific locations or dimension to them. I hope someone can tell me what I am doing wrong or even suggest something else?

Thanks again.