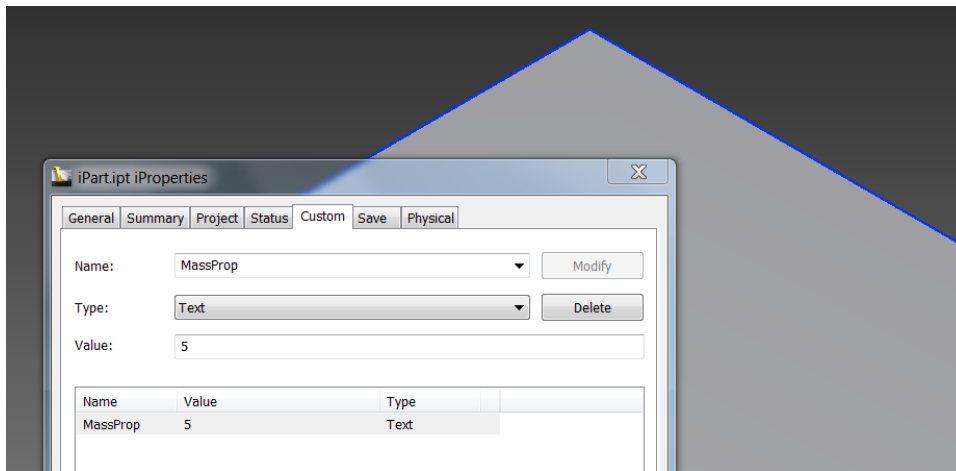
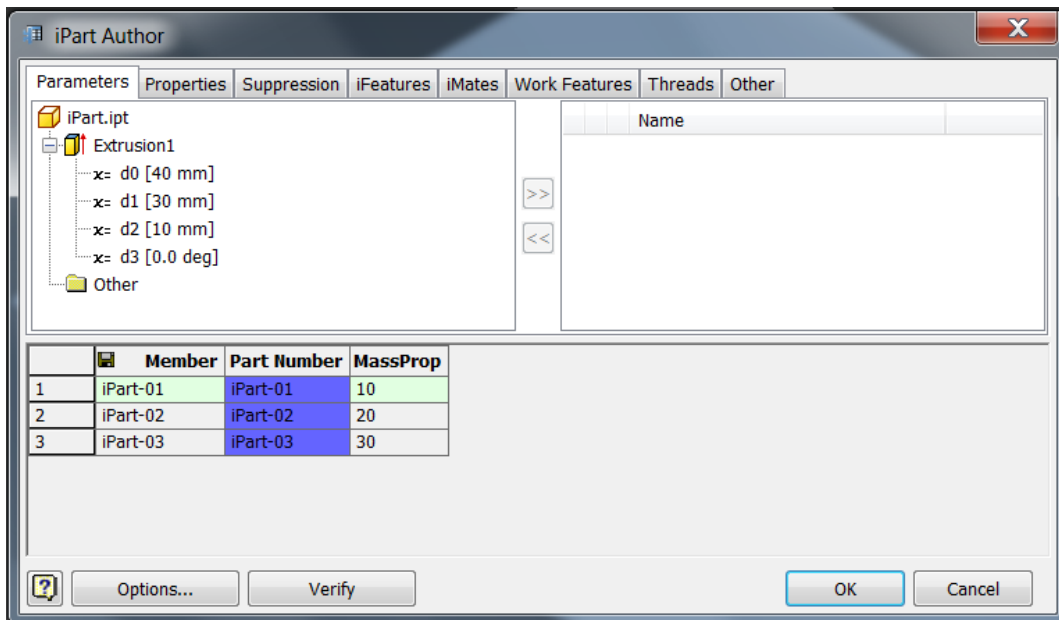


## Solution #1 – Different Mass for the same shape of iPart Member in Assembly

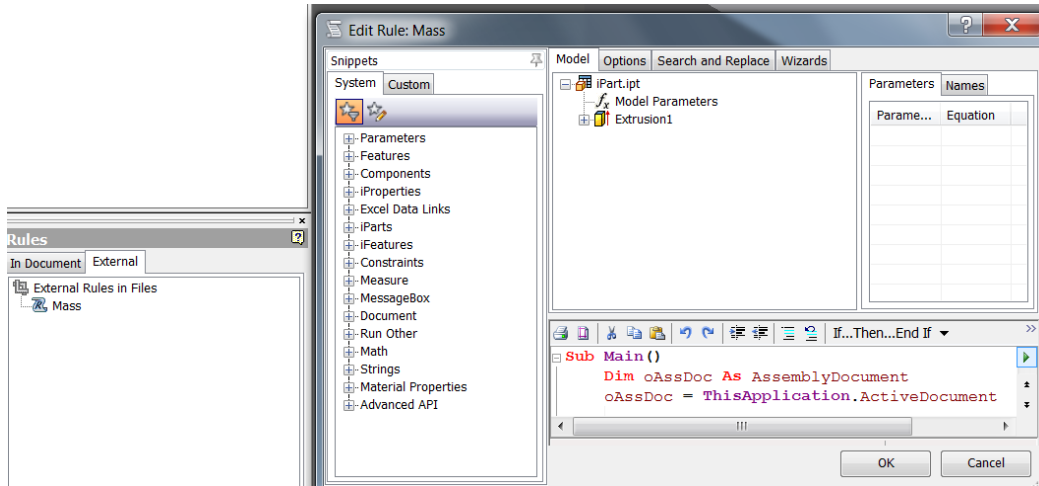
1. Create one part with Custom iProperty like “**MassProp = 5**” for mass



2. Create customize iPart with the created part in step 1 plus “**MassProp**” added in iPart table



3. New one Assembly, and place the iPart member as component. **Please make sure the part number for each member unique in Assembly**, which keeps it work fine in BOM.
4. Create one iLogic external rule using the “Mass.txt”.



- When there is any update in iPart member, please run the rule. And this will keep the mass consistent with settings in member, and you can check the updates in BOM.

Item	Part Number	Thumbnail	BOM Structure	Unit QTY	QTY	Mass	Stock Number	Description
2	iPart-02		Normal	Each	1	10.000 kg		
3	iPart-03		Normal	Each	1	15.000 kg		
4	iPart-01		Normal	Each	1	5.000 kg		

- When the value of MassProp in member is changed, the value for mass in part list will be updated after running external rule.

#### VBA Code:

```

Sub Main ()
    Dim oAssDoc As AssemblyDocument
    oAssDoc = ThisApplication.ActiveDocument

    Dim oCompDef As AssemblyComponentDefinition
    oCompDef = oAssDoc.ComponentDefinition

    Dim oOcc As ComponentOccurrence
  
```

```

For Each oOcc In oCompDef.Occurrences
    Call MassUpdate(oOcc)
Next
End Sub

Function MassUpdate(oOcc As ComponentOccurrence)
    If oOcc.IsiPartMember = True Then
        Dim Mass As Double
        Dim oMassProp As PropertySet
        Dim oPartDoc As PartDocument

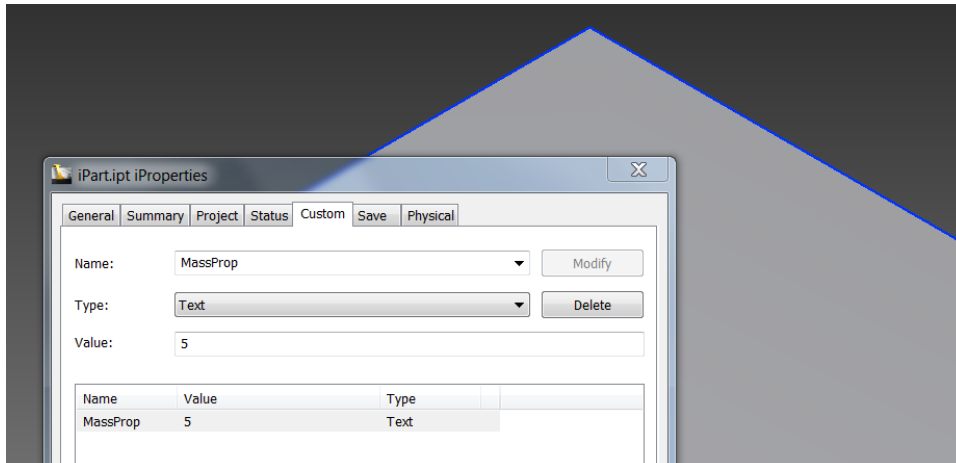
        oPartDoc = oOcc.Definition.Document
        oMassProp = oPartDoc.PropertySets("{D5CDD505-2E9C-101B-9397-08002B2CF9AE}")
        oOcc.MassProperties.Mass =
CDbl(oMassProp.Item("MassProp").Value)
    End If

    If oOcc.SubOccurrences.Count > 0 Then
        For Each oOcc In oOcc.SubOccurrences
            Call MassUpdate(oOcc)
        Next
    End If
End Function

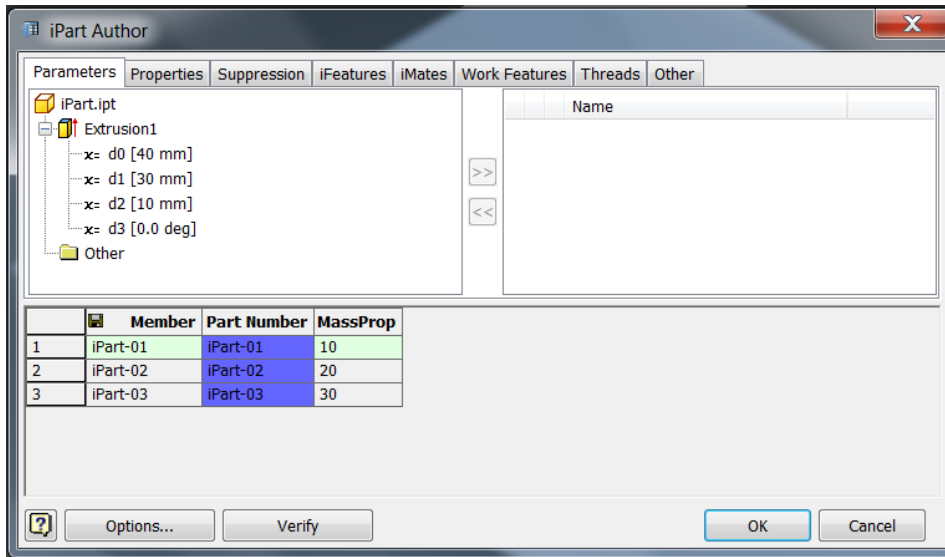
```

## Solution #2

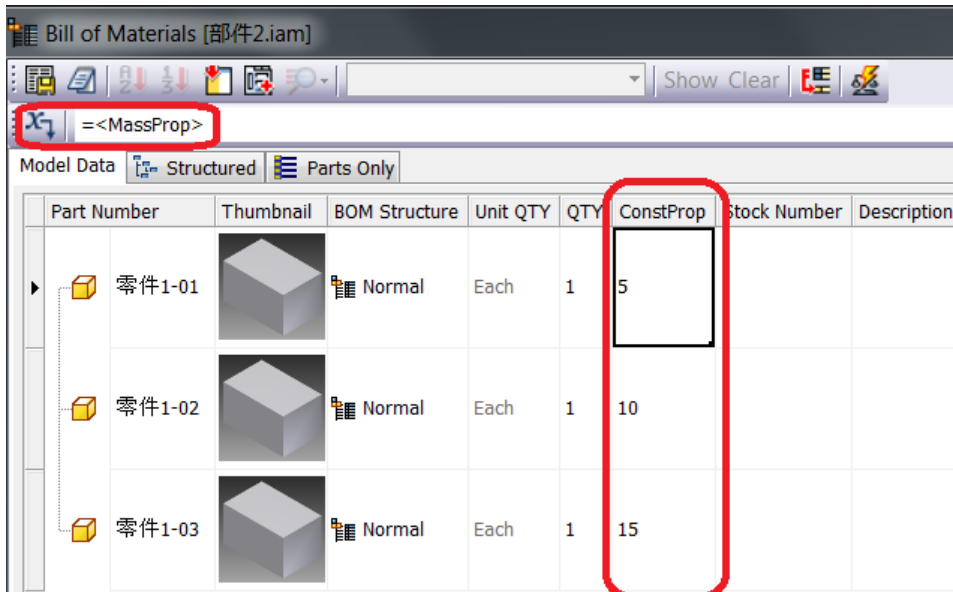
1. Create one part with Custom iProperty like “MassProp = 5” for mass



2. Create customize iPart with the created part in step 1 plus “MassProp” added in iPart table



3. New one Assembly, and place the iPart member as component. **Please make sure the part number for each member unique in Assembly**, which keeps it work fine in BOM.
4. Add one custom iProperty named "ConstProp" in BOM and apply "ConstProp"=<MassProp> to each part



5. Create part list for drawing and add "ConstProp" property in part list. When the "MassProp" in member is changed, the value for "ConstProp" in part list will be updated.