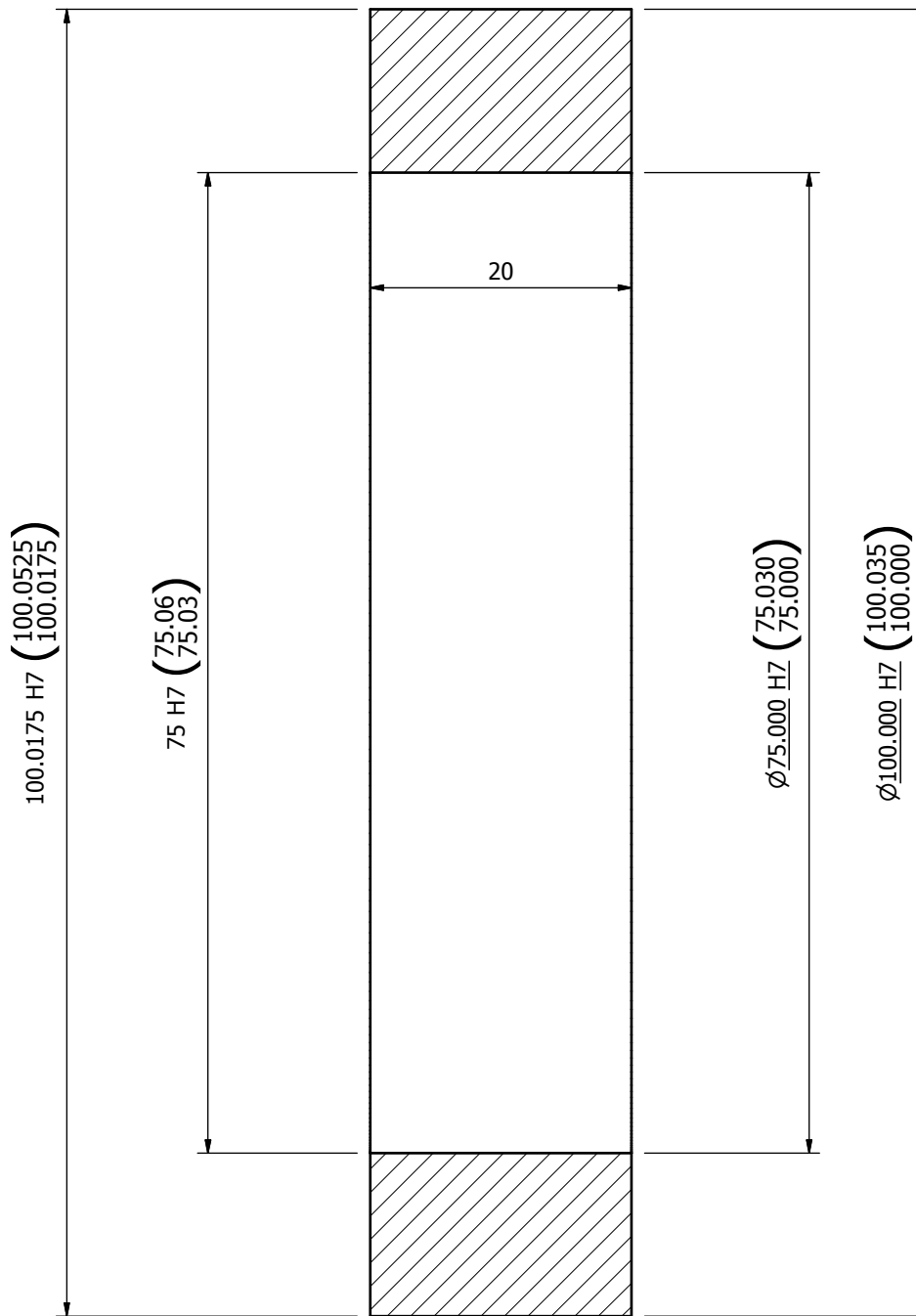


THESE DIMENSIONS HAVE BEEN ADDED TO THE DRAWING MANUALLY WITH THE APPROPRIATE FIT SELECTED. HOWEVER, AS THE DIMENSION HAS BEEN SET TO MEDIAN(ON THE MODEL SKETCH), THE DRAWING DIMENSION AND TOLERANCE IS TAKEN FROM THIS MID VALUE.



THESE DIMENSIONS HAVE BEEN CREATED USING THE 'RETRIEVE DIMENSION' OPTION. SO THEY ARE DRIVEN BY THE NOMINAL DIMENSION ON THE MODEL AND DISPLAY THE TOLERANCE IN ACCORDANCE WITH THE SELECTED FIT. THE DIMENSION PROERTIES ARE SET TO 'MEDIAN'.

D-D ( 2.5:1 )

|       |            |
|-------|------------|
| Rev   | 01         |
| Date  | 02/03/2012 |
| Drawn | SK         |
| Ch'kd |            |
| App   |            |

|   |  |  |               |  |                        |
|---|--|--|---------------|--|------------------------|
|   |  |  |               |  |                        |
|   |  |  |               | Title<br><b>TOLERANCE TEST DRAWING</b> |                        |
| Abbreviations and symbols to BS 308<br>General quality in accordance<br>with DESIGN MANUAL specifications |  | Material Specification<br>STEEL TO DMS6002 | Reference No. | Scale<br>A2                            | Drawing No.<br>GB28491 |
|   |  | First Angle<br>Projection                  | First Used On | Revision<br><b>1</b>                   |                        |