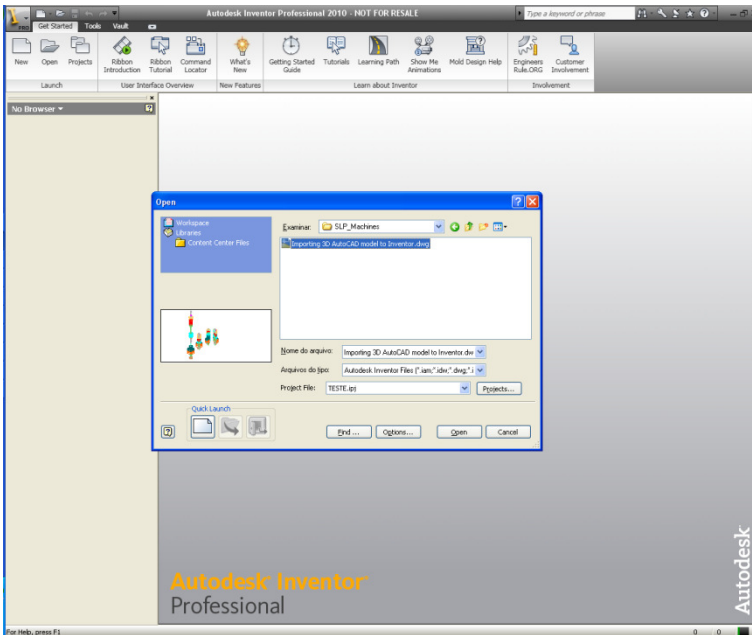
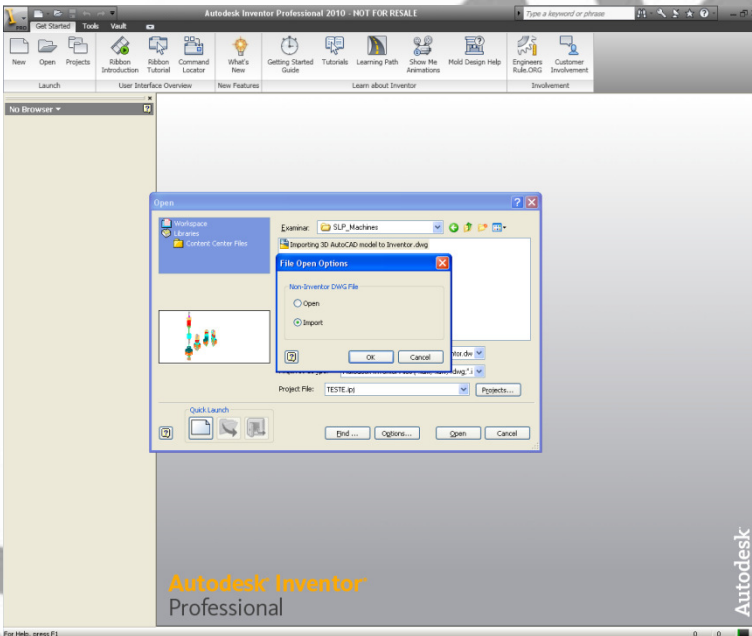


Importing 3D models from AutoCAD to Inventor

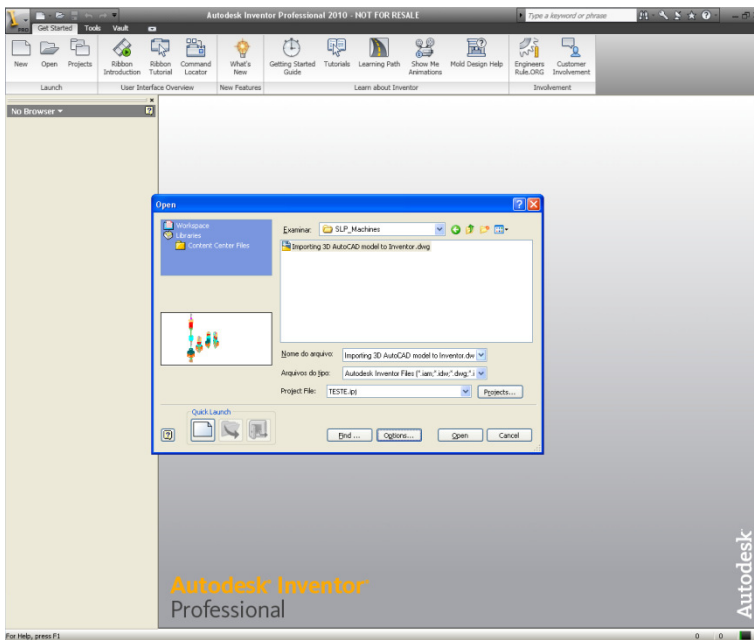
On “Autodesk Inventor” in the *Open* dialog box select the DWG file and click *Options*



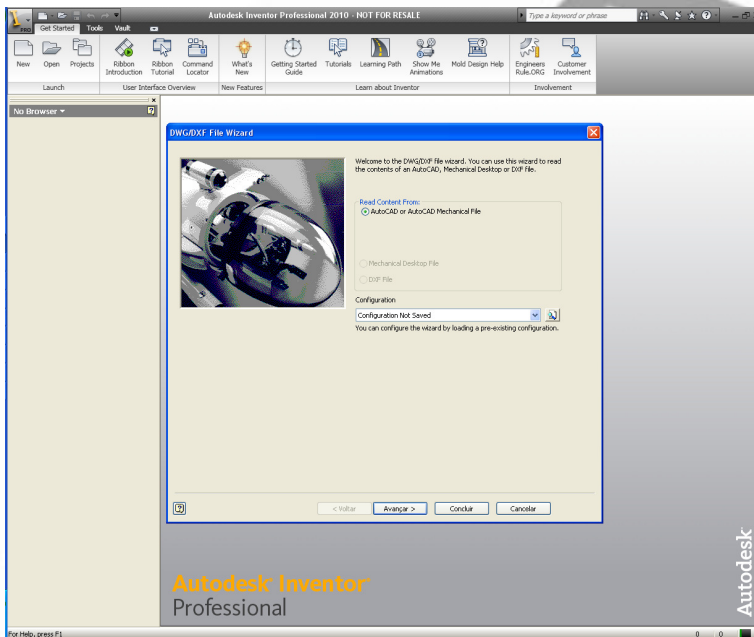
In the “File Open Options” select *Import*. Click *OK*



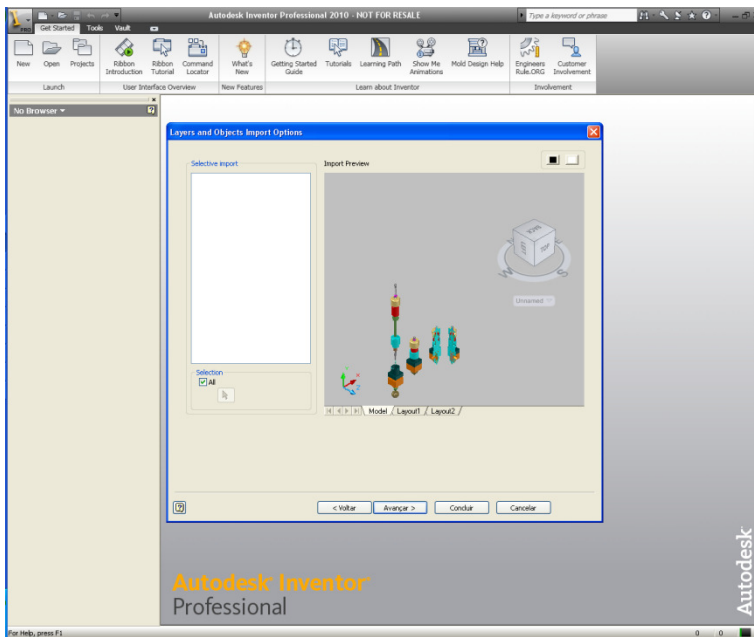
In the "Open" dialog box click **Open**



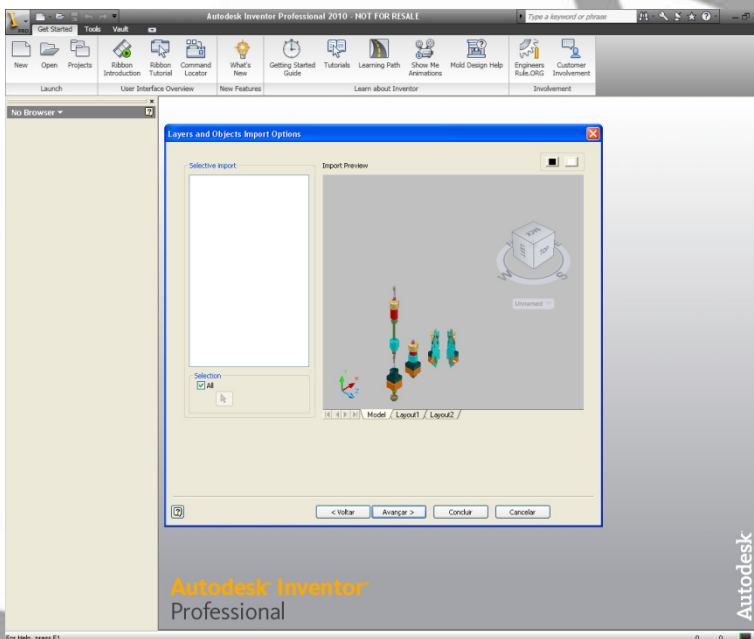
In the "DWG/DWF File Wizard" select **AutoCAD or AutoCAD Mechanical File** click **Next**



In the “Layers and Objects Import Options” select **All**. Click **Next**



In “Import Destination Folder” select **3D models** in the *3D solid options* and select **New part** → **Wires to 3D sketch** in the *Destination for 2D data* area. (You should specify the unit). Click **Done**



All components will be imported to Inventor as parts. Now, just save the Assembly file and the part files as well.

