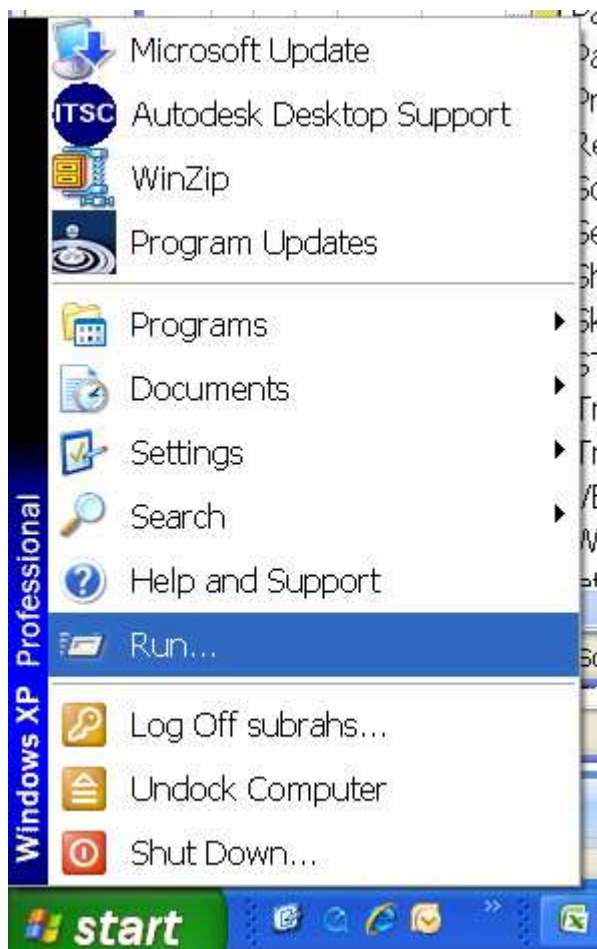


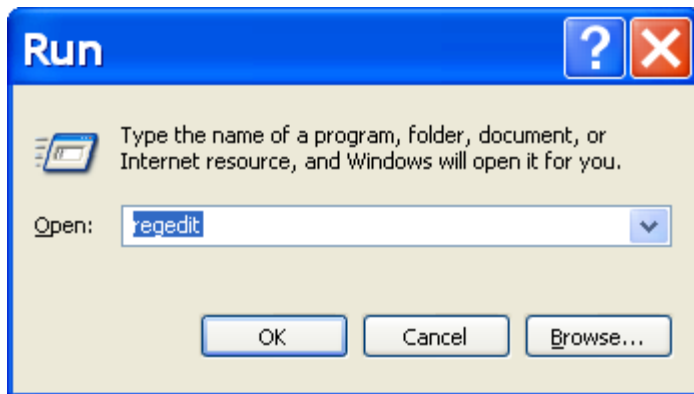
Problem: Cannot create or edit thread features or tapped holes.

Inventor version: Available only on R2008 and later.

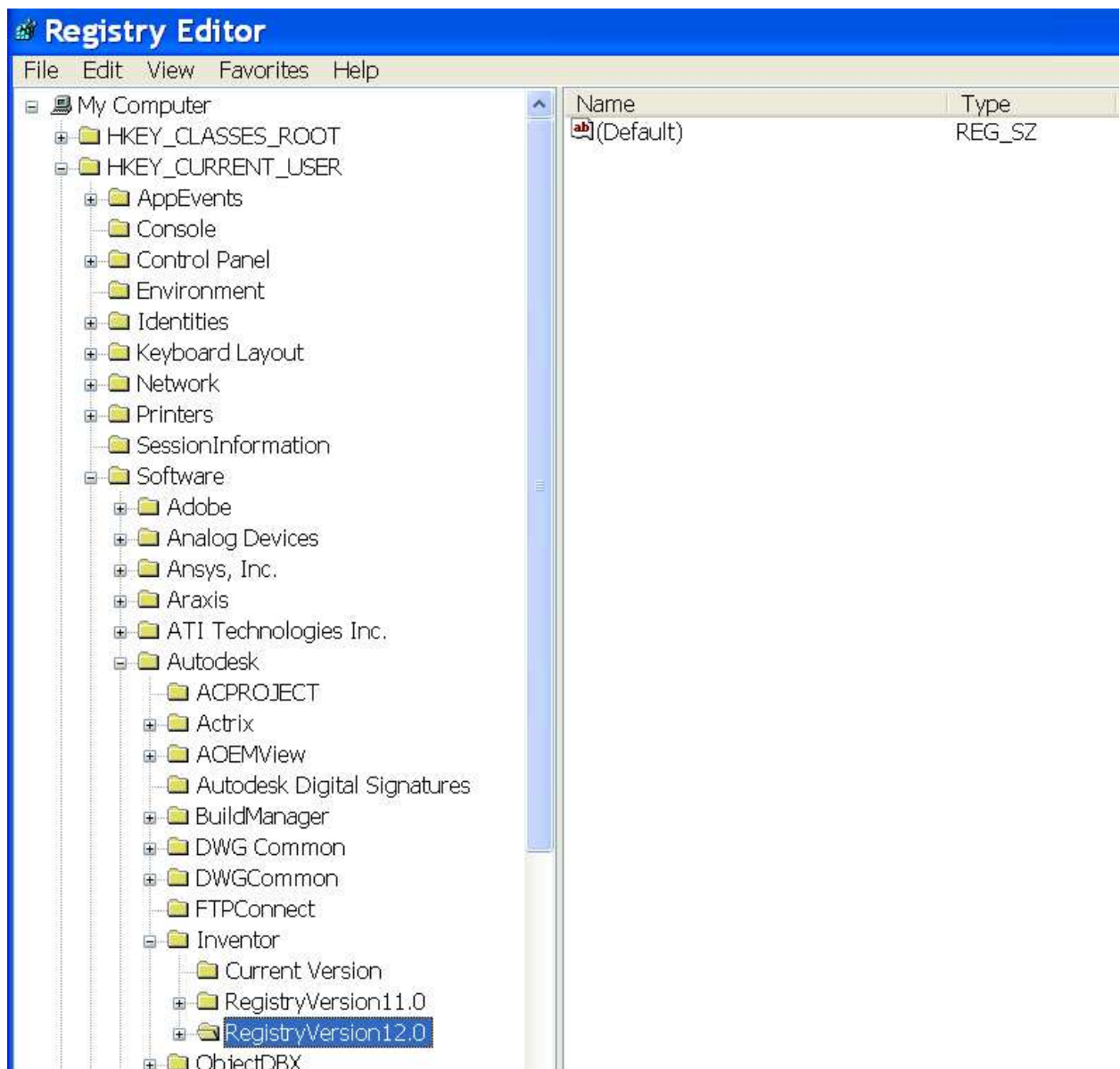
Solution: The following steps will help you change the registry setting so that threads and tapped holes will use Excel to read the thread spreadsheet instead of Microsoft's ADO (ActiveX Data Objects are a language-neutral object model that exposes data raised by an underlying OLE DB Provider) .



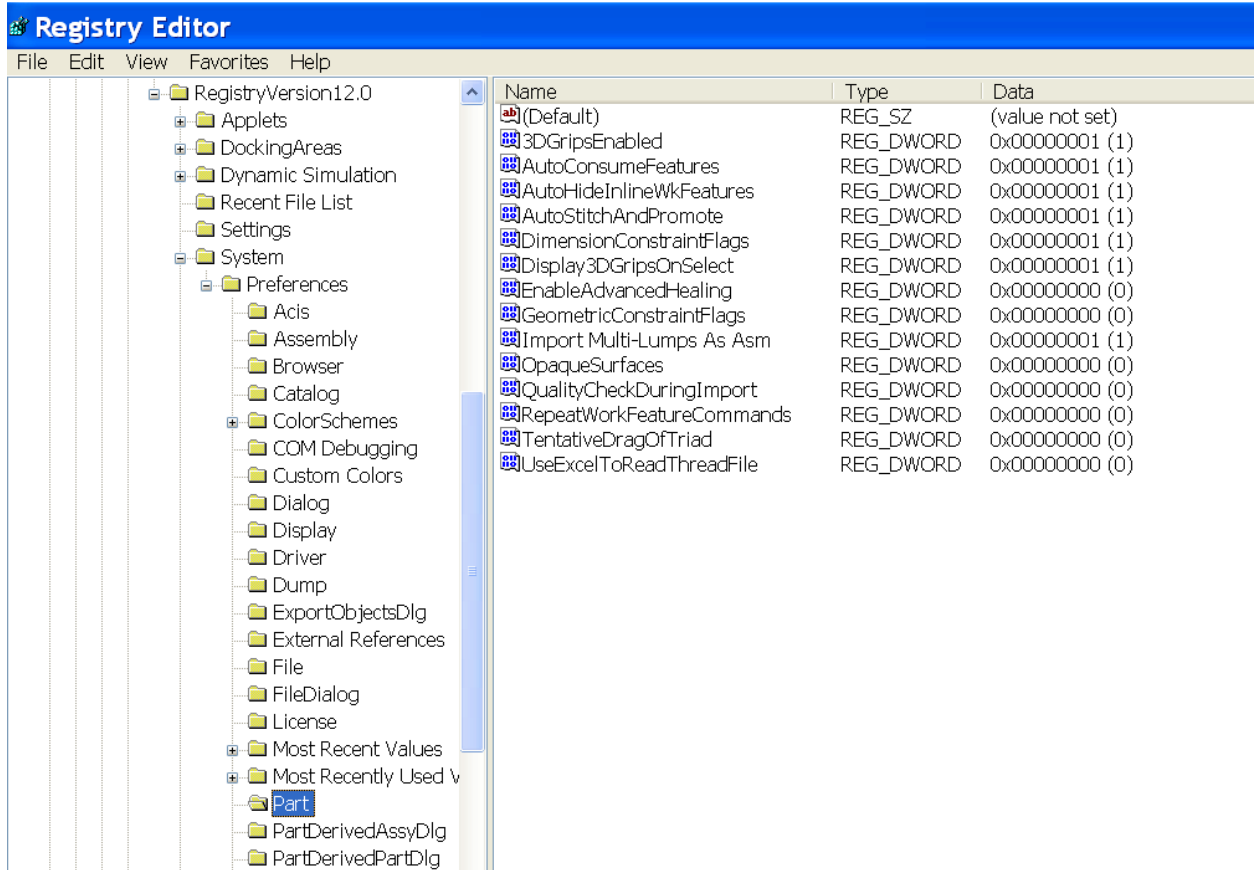
1. Start, Run

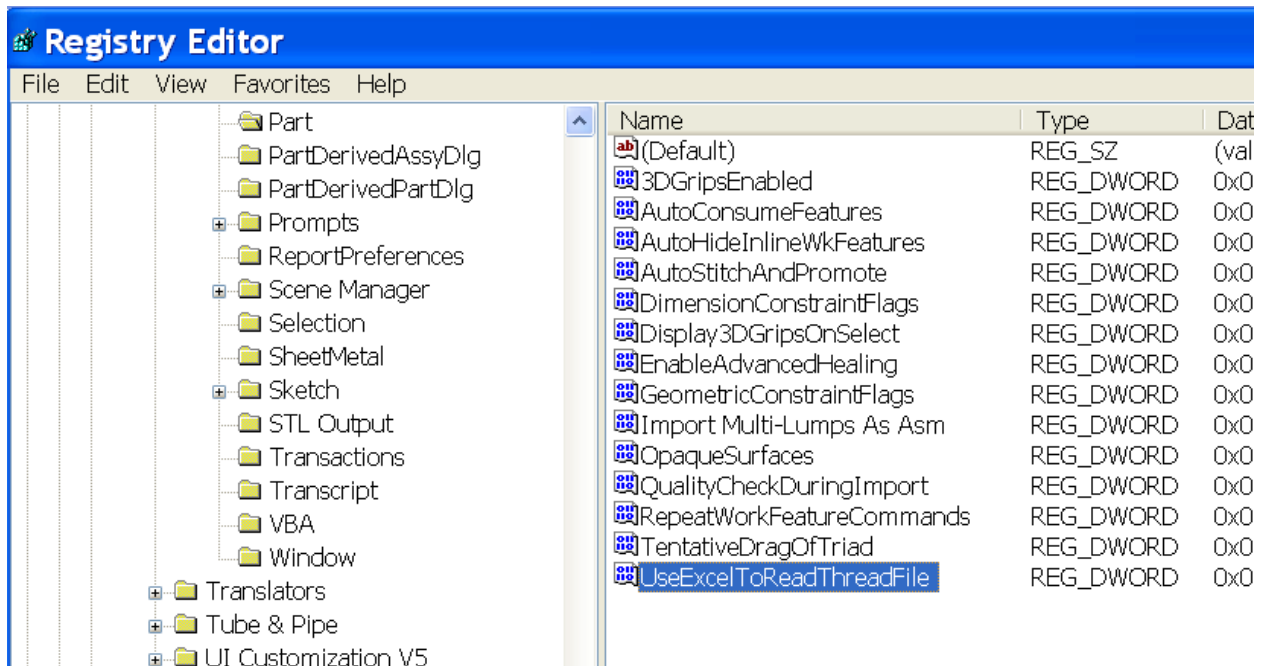


2. Type regedit in the Run dialog box

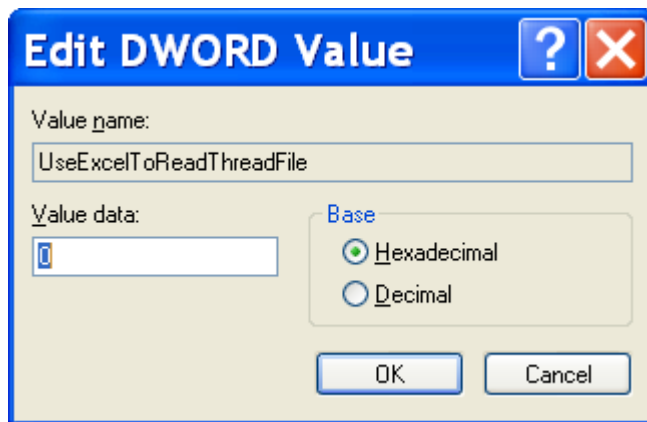


3. Go to
HKEY_CURRENT_USER\Software\Autodesk\Inventor\RegistryVersion12.0\System\Part





4. Under RegistryVersion12.0, Part, Select *UseExcelToReadthreadFile* and double-click



5. Change 0 to 1 in the Edit DWORD Value dialog box, OK
6. Close Registry editor and relaunch Inventor.