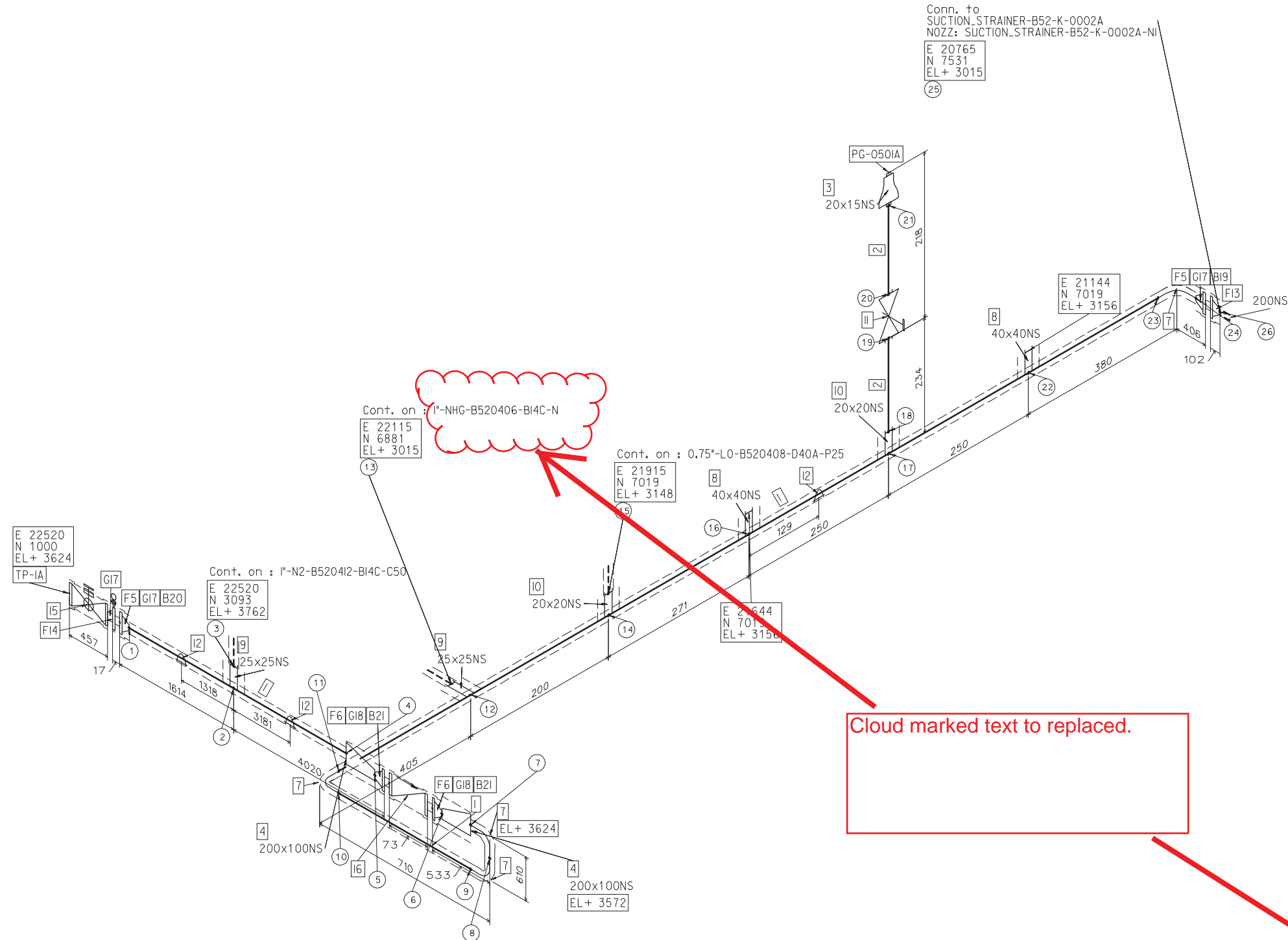


8 7 6 5 4 3 2 1



Bill of Materials				
Pos	Quantity	Size1	Size2	Description
Shop Materials				
PIPES				
1	6550	200		PIPE SIZE, 200NB, SCH 40, ASTM A333 GR.6, BE, SEAMLESS, B 36.10M
2	163	20		PIPE SIZE, 20NB, SCH 80, ASTM A333 GR.6, PE, SEAMLESS, B 36.10M
FITTINGS				
3	1	20	15	SWAGE CONCENTRIC, 20NB, SCH 80 X 15NB, SCH 80, ASTM A420 GR.WPL6, PLAIN, NPT(M), MSS SP-95
4	2	200	100	ECCENTRIC REDUCER, 200NB, SCH 40 X 100NB, SCH 80, ASTM A420 GR.WPL6, BUTT WELD, B 16.9
5	2	200		FLANGE SIZE, 200NB, SCH 40, WNRF, 150#, ASTM A350 GR.LF2 CL.1, B 16.5, 125 AARH
6	2	100		FLANGE SIZE, 100NB, SCH 40, WNRF, 150#, ASTM A350 GR.LF2 CL.1, B 16.5, 125 AARH
7	4	200		90 DEG LR ELBOW, 200NB, SCH 40, ASTM A420 GR.WPL6, BUTT WELD, B 16.9
8	2	40	40	HALF COUPLING, 40NB, SCH 80, 3000#, ASTM A350 GR.LF2 CL.1, SOCKET WELD, B 16.11
9	2	25	25	HALF COUPLING, 25NB, SCH 80, 3000#, ASTM A350 GR.LF2 CL.1, SOCKET WELD, B 16.11
10	2	20	20	HALF COUPLING, 20NB, SCH 80, 3000#, ASTM A350 GR.LF2 CL.1, SOCKET WELD, B 16.11
VALVES				
11	1	20		GATE VALVE, 800LB, ASTM A350 GR.LF2 CL.1
Supports				
12	3	200		REFRI.UBI.200.060
Field Materials				
FITTINGS				
13	1	200		FLANGE SIZE, 200NB, SCH 40, WNRF, 150#, ASTM A350 GR.LF2 CL.1, B 16.5, 125 AARH
14	1	200		FLANGE SIZE, 200NB, SPECTACLE BLANK, 150LB, RFRF, 150#, ASTM A516N GR.70, B 16.48, 125 AARHARH
VALVES				
15	1	200		BALL VALVE, 150LBS, ASTM A352 GR.LCB
16	1	100		DUAL PLATE FLANGED CHECK VALVE, 150LB, RF, ASTM A352 GR.LCB
Gaskets				
17	3	200		GASKET, 150LB, 4.5 MM THK SPIRAL WOUND SS 316 GRAFOIL WITH SS 316 INNER & CS OUTER RING
18	2	100		GASKET, 150LB, 4.5 MM THK SPIRAL WOUND SS 316 GRAFOIL WITH SS 316 INNER & CS OUTER RING
Bolts				
19	8	3/4"	110	STUD DIA 3/4", STUD LENGTH 110MM, STUD: ASTM A 320 GR. L7, NUT : ASTM A 194 GR.4/7, (FULLY THRD.)
20	8	19	135	STUD DIA 3/4", STUD LENGTH 110MM, STUD: ASTM A 320 GR. L7, NUT : ASTM A 194 GR.4, (FULLY THRD.)
21	16	5/8"	95	STUD DIA 5/8", STUD LENGTH 95MM, STUD: ASTM A 320 GR. L7, NUT : ASTM A 194 GR.4, (FULLY THRD.)

Cloud marked text to replaced.

- NOTES :**
- 1) ALL DIMENSIONS ARE IN mm, UNLESS OTHERWISE SPECIFIED.
 - 2) FOR LINES 1.5" & SMALLER, DIMENSIONS & ROUTING ARE APPROX. SUPPORTING SHALL BE STUDIED & PERFORMED BY SUB CONTRACTOR PRIOR FABRICATION.
 - 3) PIPE CUT LENGTHS FOR SMALL BORE LINES SHALL BE CONFIRMED AT SITE.
 - 4) SPOOL PIECE ADJOINING CONTROL VALVES, SAFETY VALVES, MOTOR OPERATED VALVES, FITTINGS OF EXTRAORDINARY HIGHER SIZE PIPES & O-LETS SHALL BE SUITABLY ADJUSTED AT SITE BASED ON ACTUAL DIMENSIONS.
 - 5) THE LENGTH OF ALL PIPES SHOWN IN THE SUMMARY LIST ARE WITHOUT SURPLUS FOR CUTTING.
 - 6) LINE LIST SHALL BE REFERRED FOR OPERATING PRESSURE, OPERATING TEMPERATURE, DESIGN PRESSURE, DESIGN TEMPERATURE, INSULATION TYPE, INSULATION THICKNESS, TEST PRESSURE AND TEST MEDIUM, RADIOGRAPHY, LP.
 - 7) CORROSION PAD OF MATERIAL EQUIVALENT TO LINE PIPE & THICKNESS SAME AS PER OF LINE PIPE OR 12MM. WHICHEVER IS LESS FOR >=2" LINES SHALL BE PROVIDED IN BARE RESTING LINES.

MATERIAL	SCALE	DRG NO	FIRST USE MODEL
---	---	PRR/R5328/24	ACR PROJ
QUANTITY : -	(C)	8'-NHG-B520411-B14C-C60	REV. SHEET SH SIZE D 1 / 1 A3
APPRD RCS	TITLE ISOMETRIC FOR BOG COMPRESSOR PACKAGE		
CHD PSW	FINISHED WEIGHT		
BRB DRN BRB	-		
15-Jun-19 0	ISSUED FOR INFORMATION	BRB DRN BRB	
SYM DATE REV.	BRIEF RECORD	SIGN ALL DIMENSIONS ARE IN mm.	