



Revisions	Number	Description	Date
	1	Issue For Bid	01/14/14

Designed	MK
Drawn	BMW
Checked	MK
Approved	MK

Date: January 14, 2014

Submittal: Issue For Bid

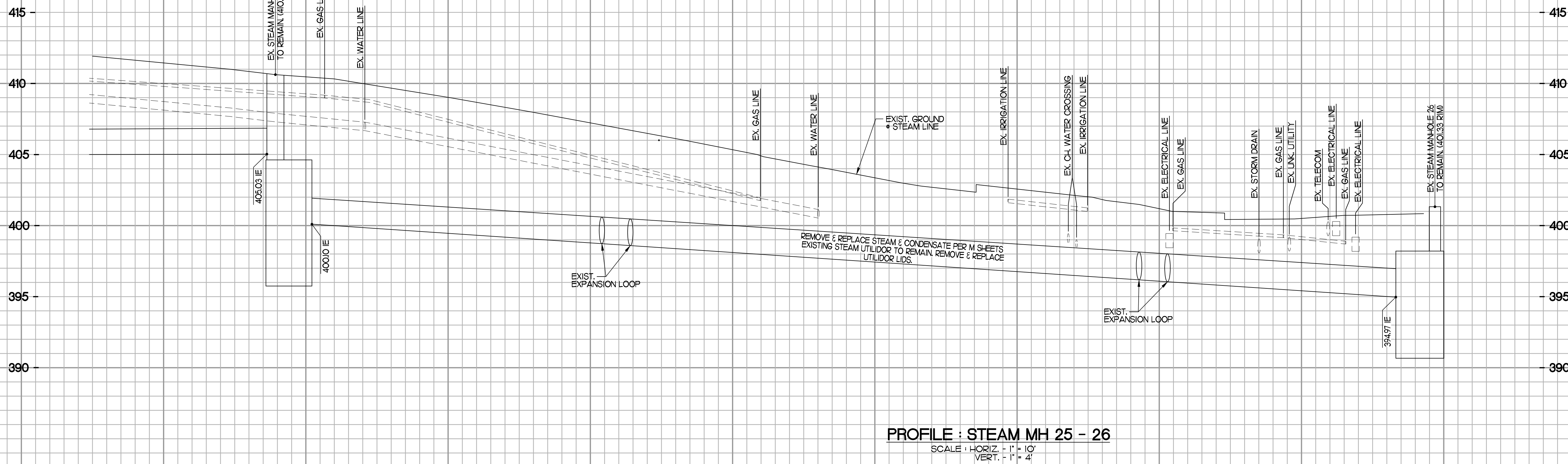
Scale: 1" = 10'

Sheet Title

**Utility Plan
SMH 25-26**

Sheet Number

C306

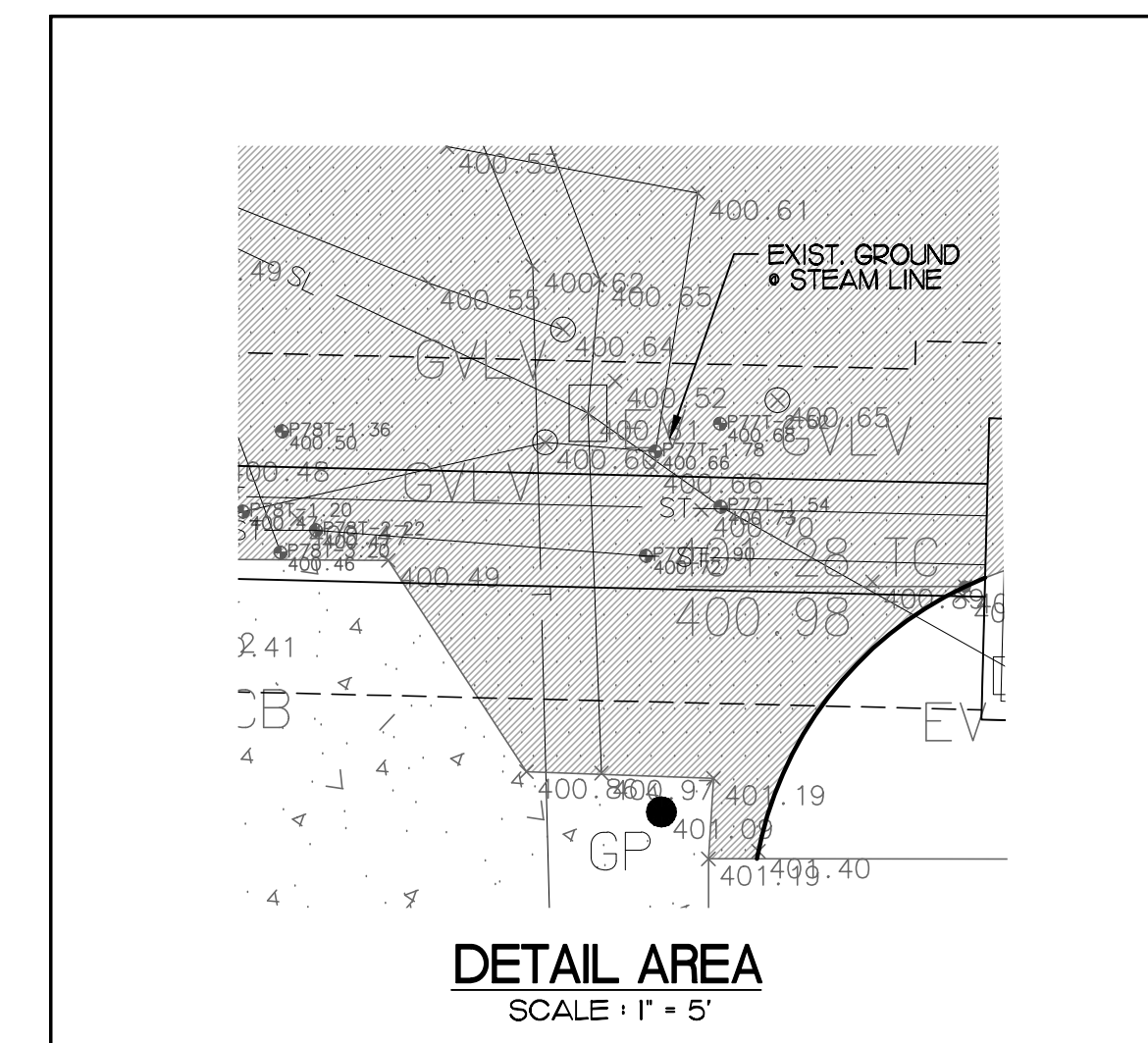
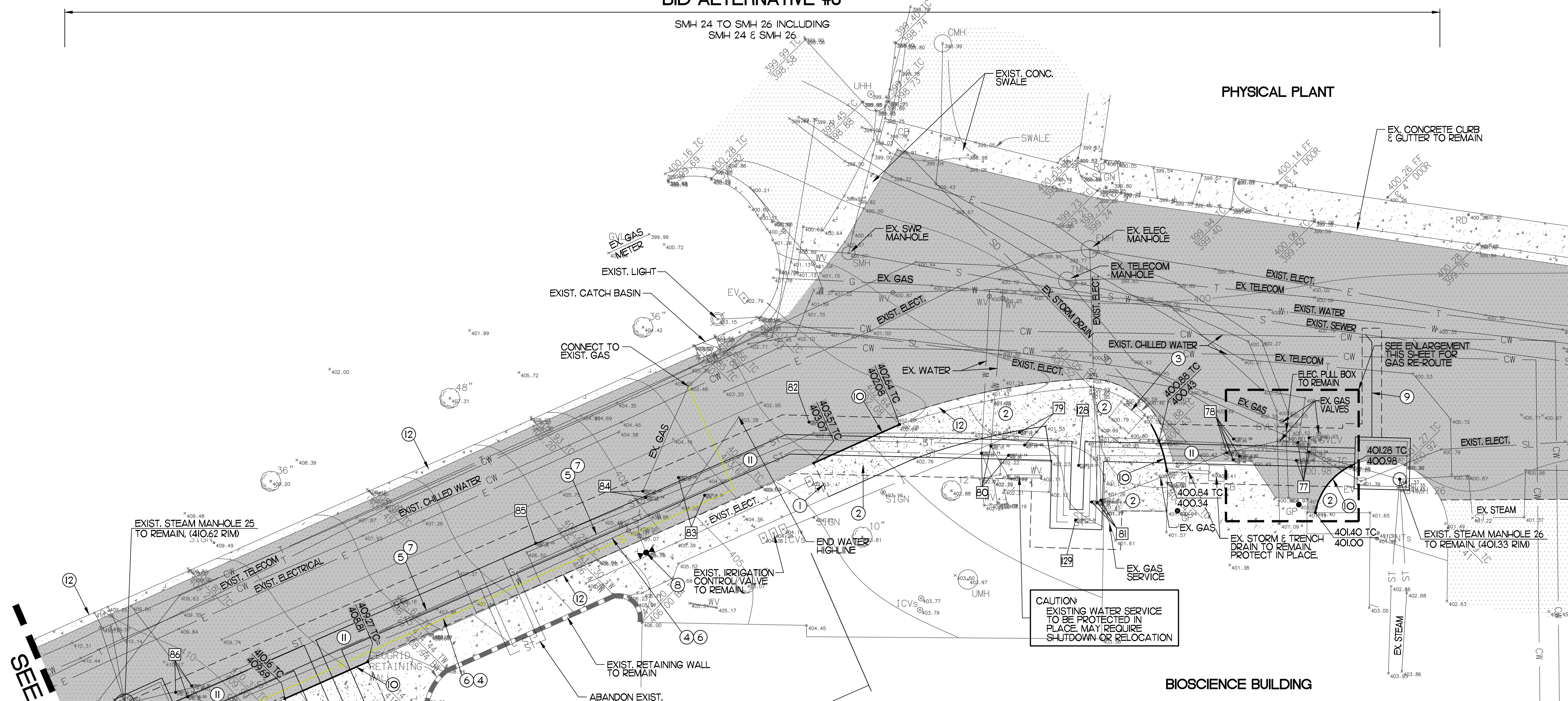


POTHOLE INFORMATION			
	UTILITY	TOP	BOTTOM
77	UNK	-2.52'	X
	STEAM	-2.90'	X
	GAS	-1.78'	X
	ELECTRIC	-1.54'	X
78	STEAM	-2.22'	X
	TELECOM	-3.30'	X
	UNK	-1.36'	X
	GAS	-1.20'	X
79	STEAM	-2.98'	X
	IRR	-0.78'	X
80	WATER	-3.10'	X
	STEAM	-3.14'	X
	WATER	-2.74'	X
81	STEAM	-2.98'	X
	ELECTRIC	-1.60'	-2.60'
	GAS	-1.16'	X
82	UNK	-3.30'	X
83	UNK	-3.00'	X
	STEAM	-4.30'	X
84	STEAM	-4.74'	X
	GAS	-3.00'	X
85	STEAM	-6.10'	X
86	WATER	-3.30'	X
	SD	-3.74'	X
	STEAM	-6.00'	X
87	GAS	-1.10'	X
	STEAM VENT	-1.30'	X
	WATER	-2.30'	X
88	STEAM	-2.50'	X
89	STEAM	-3.34'	X

POTHOLES DATED WEEK OF XXXX - XXXX 2013, PERFORMED BY UNDERGROUND SOLUTIONS, INC.

BID ALTERNATIVE #3

SMH 24 TO SMH 26 INCLUDING SMH 24 & SMH 26



CONSTRUCTION NOTES:

- 1 SAWCUT LINE - NEAREST JOINT.
- 2 REMOVE CONCRETE SIDEWALK, REPLACE / MATCH EXIST. FLUSH W/ CONCRETE PER DETAILS 5/CIOI.
- 3 REMOVE & REPLACE PED RAMP PER DETAIL 13/CIOI.
- 4 EXIST. 6" WATER TO BE HIGH-LINED DURING STEAM LINE CONSTRUCTION & REPLACED UPON COMPLETION. ALL CONNECTIONS SHALL BE CONNECTED TO NEW 8" MAIN.
- 5 EXIST. 2" GAS TO BE HIGH-LINED DURING STEAM LINE CONSTRUCTION & REPLACED UPON COMPLETION. ALL CONNECTIONS SHALL BE CONNECTED TO NEW 2" MAIN.
- 6 PROVIDE 8" PVC C900 WATERLINE, TOP OF WATER TO BE MIN. 3' BELOW FINISH GRADE. CONTRACTOR TO CONFIRM POINTS OF CONNECTION. PROVIDE NEW 8" GATE VALVES.
- 7 INSTALL 2" POLY GAS LINE, CONNECT TO EXISTING NORTH & SOUTH ENDS. UNDERGROUND NATURAL GAS PIPE SHALL BE SCHEDULE 40 POLYETHYLENE PE2406 (YELLOW). FITTINGS SHALL BE SOCKET FUSION WELDED POLYETHYLENE COMPLYING WITH ASTM D2513 COMPLETE WITH WARNING TAPE & 14 GAUGE TRANSFER WIRE. CONTRACTOR TO CONFIRM POINTS OF CONNECTION.
- 8 EXIST. FIRE HYDRANT TO REMAIN.
- 9 PROVIDE 1 1/2" GALVANIZED STEEL PIPE DRAIN FROM EXIST. SMH SUMP DRAIN TO EXIST. SEWER.
- 10 REMOVE & REPLACE CONCRETE CURB.
- 11 CONTRACTOR TO LOCATE, CONFIRM AND EXPOSE EXISTING UTILITOR AND REPLACE STEAM & CONDENSATE LINES PER M.O.I. REPLACE UTILITOR LID PER S601, BACKFILL AND REPLACE EXISTING SURFACE IMPROVEMENTS BACK TO EXISTING CONDITION.
- 12 EXISTING CURB TO REMAIN.

CAUTION:
ALL ELECTRICAL & COMMUNICATIONS LINES SHALL BE PROTECTED BY CONTRACTOR AT ALL TIMES.

NOTE TO CONTRACTOR
HIGH LINE UTILITIES DURING CONSTRUCTION & RETURN UTILITIES TO EXISTING LOCATION ABOVE UTILITOR. CONTRACTOR SHALL SUBMIT SHOP DRAWINGS & SUBMITTAL FOR REVIEW & APPROVAL BY CAMPUS FIRE MARSHALL.

SURVEY CONTROL POINTS:
PT. 1616
N 18536821917 E. 6308555.2098, ELEV. = 412.80
MAG NAIL & WASHER IN CONCRETE

PT. 4029
N 18533141424 E. 6308574.9289, ELEV. = 409.29
MAG NAIL & WASHER IN AC BERM
FOR ADDITIONAL CONTROL CONTACT SNIPES-DYE ASSOCIATES.

SEE SHEET C305

CAUTION:
ALL ELECTRICAL & COMMUNICATIONS LINES SHALL BE PROTECTED BY CONTRACTOR AT ALL TIMES.

HIGH-LINE GAS & WATER DURING CONSTRUCTION
CAMPUS FIRE MARSHALL APPROVAL REQUIRED

