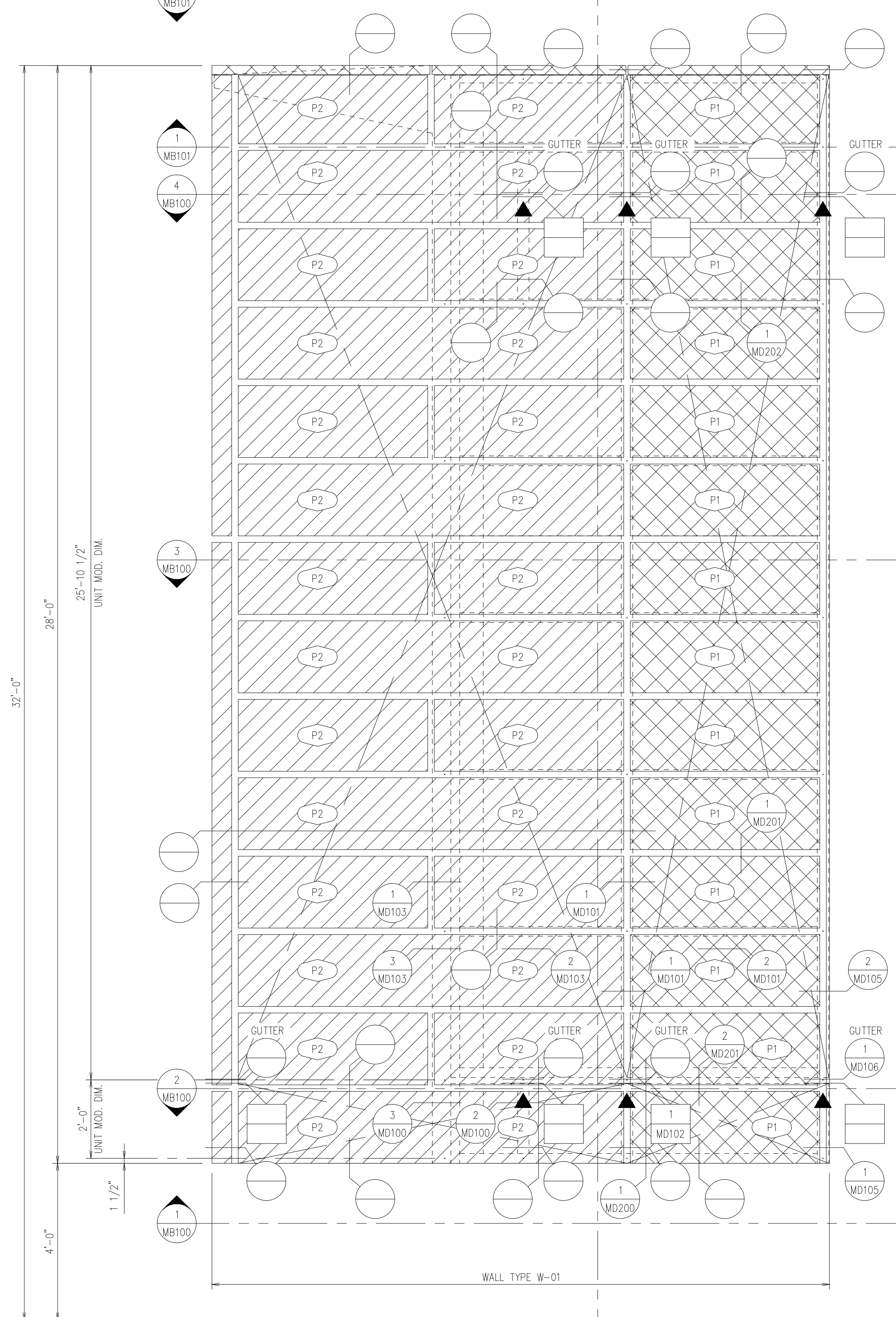
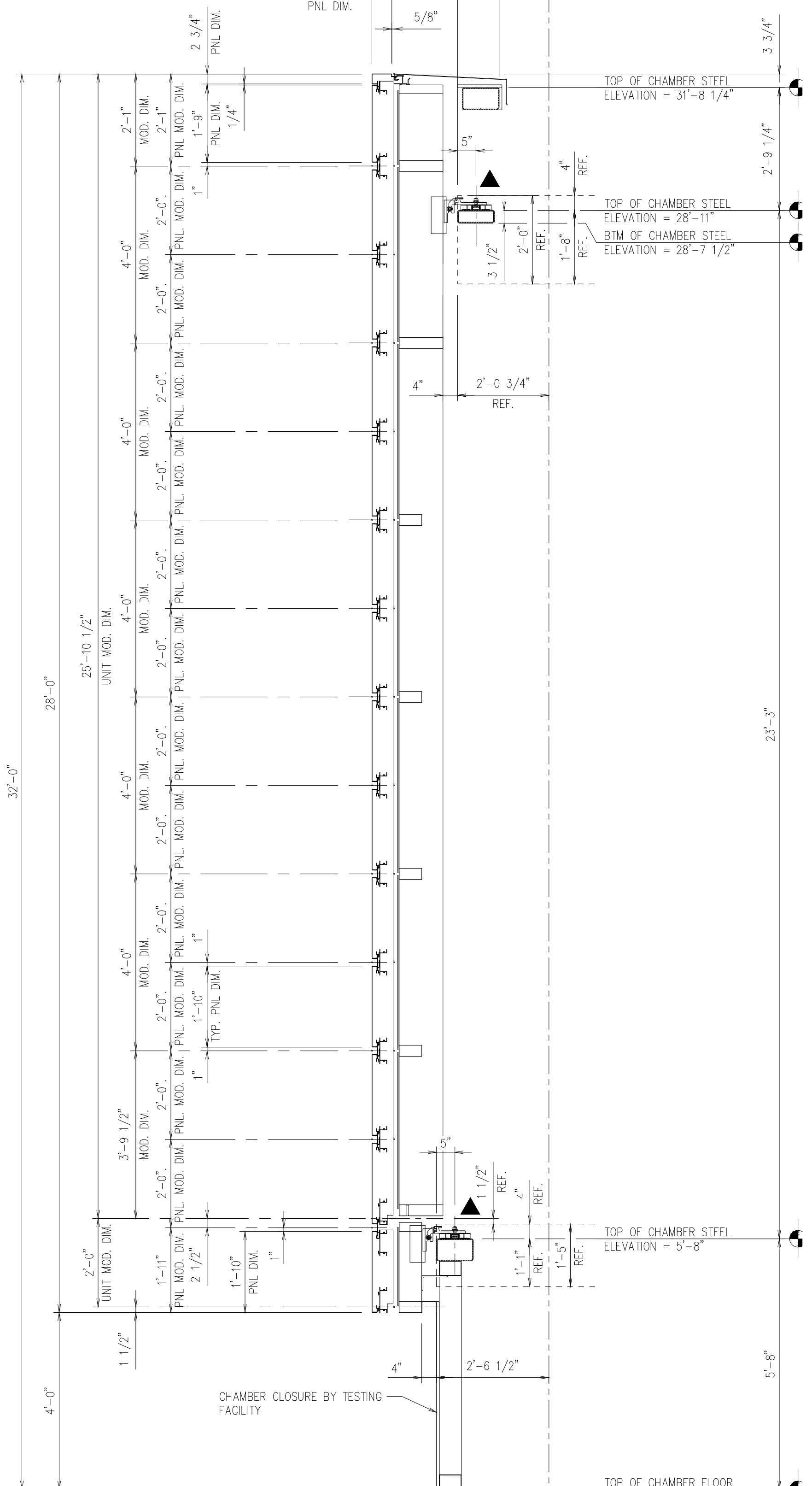


1 PMU G-07 ELEVATION
Scale: 1/2" = 1'-0"

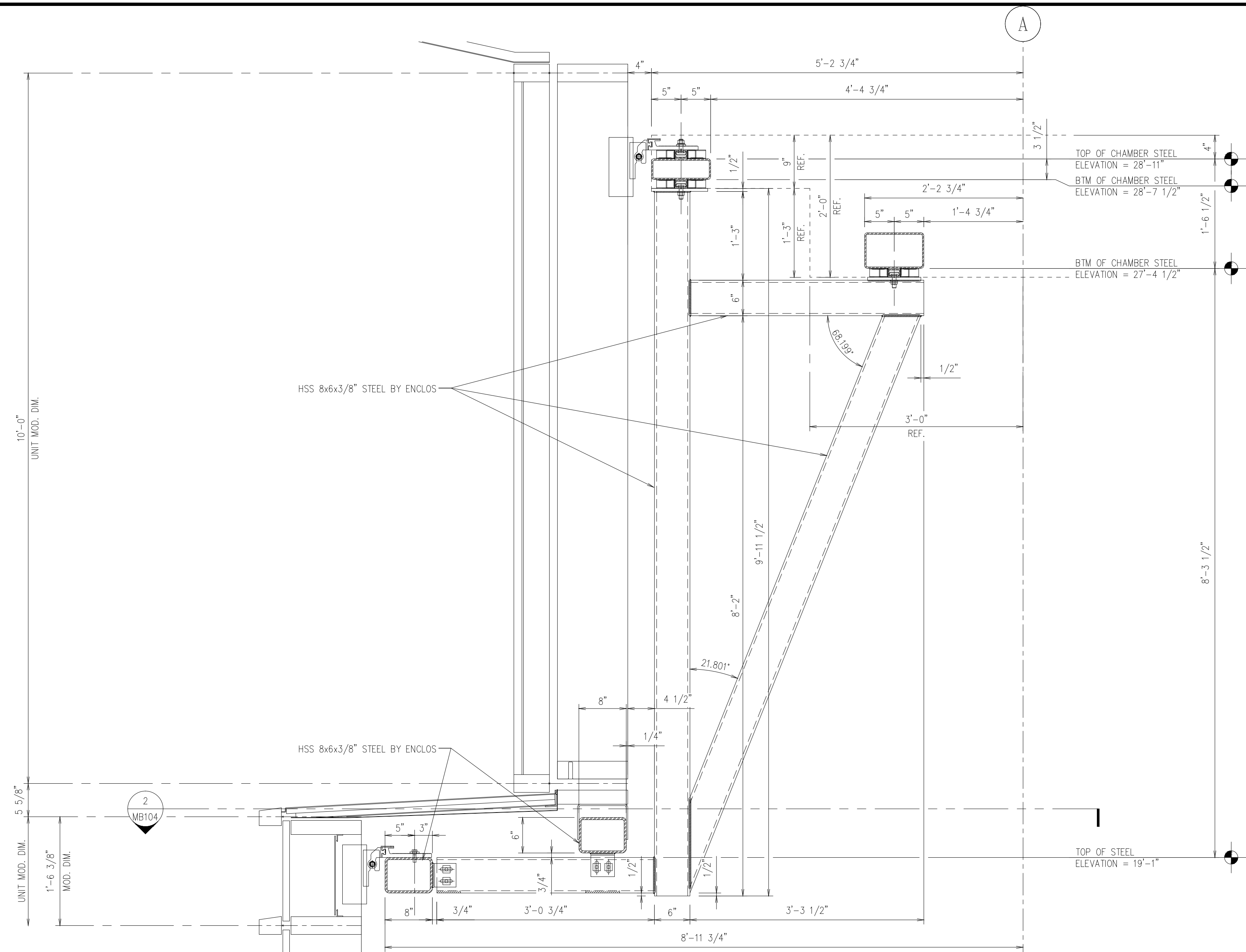
2 PMU W-01 ELEVATION
Scale: 1/2" = 1'-0"



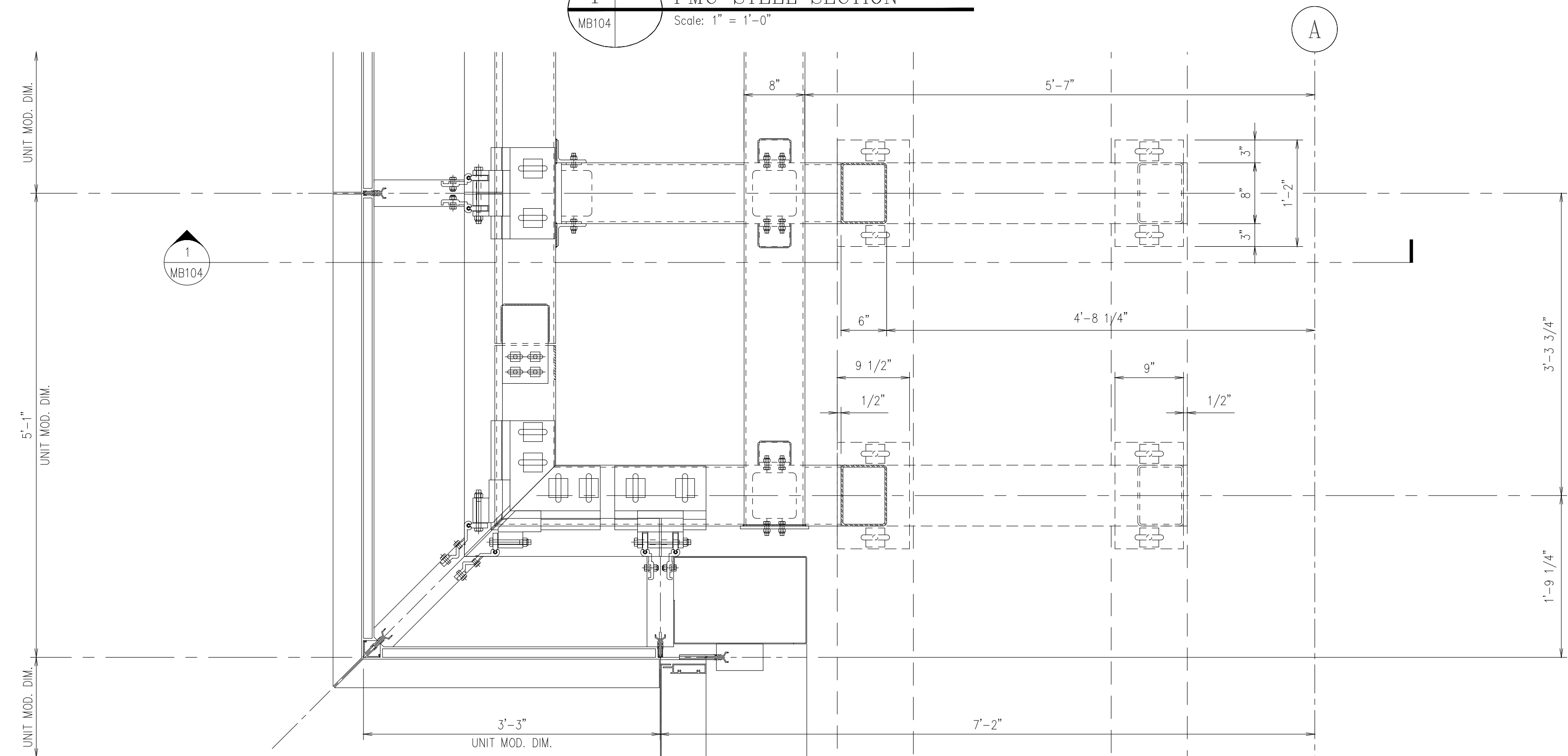
3 PMU EAST ELEVATION
Scale: 1/2" = 1'-0"



4 PMU SECTION
Scale: 1/2" = 1'-0"



1 PMU STEEL SECTION
MB104 Scale: 1" = 1'-0"



2 PMU STEEL PLAN
MB104 Scale: 1" = 1'-0"