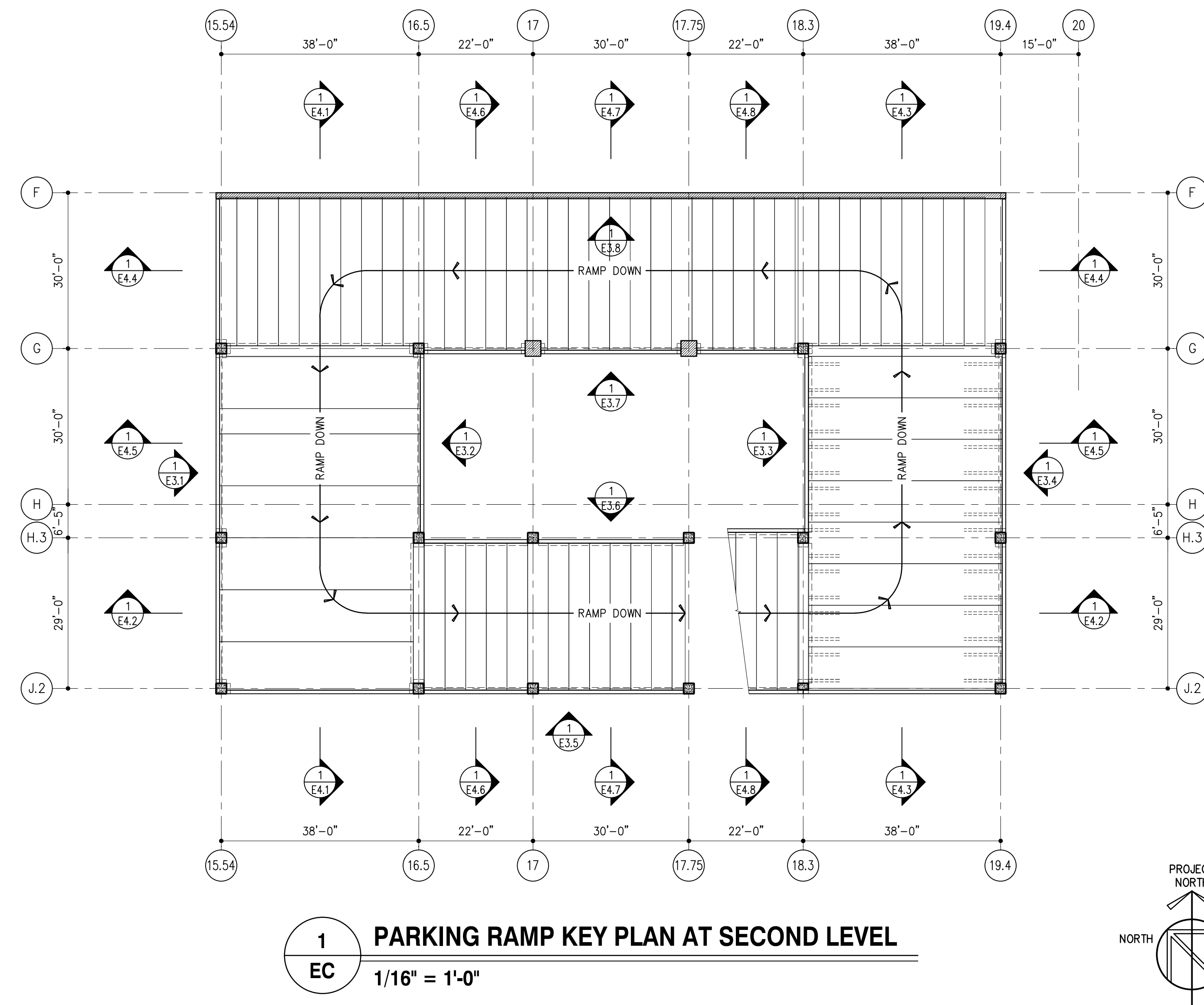


International Market Place Parking Ramp

Honolulu, Hawaii



1 PARKING RAMP KEY PLAN AT SECOND LEVEL
EC
1/16" = 1'-0"

SHEET INDEX

SHEET	DESCRIPTION	STATUS	DATE	SHEET	DESCRIPTION	STATUS	DATE	SHEET	DESCRIPTION	STATUS	DATE
EC	COVER SHEET, SHEET INDEX, GENERAL NOTES	APPROVAL	07/29/14	E4.8	RAMP SECTIONS	APPROVAL	07/29/14				
E2.1	FOUNDATION PLAN - DOWEL PLACEMENT	APPROVAL	07/29/14	E5.1	ARCHITECTURAL DETAILS	APPROVAL	07/29/14				
E2.2	SECOND LEVEL FRAMING PLAN	APPROVAL	07/29/14	E5.2	ARCHITECTURAL DETAILS	APPROVAL	07/29/14				
E2.3	THIRD LEVEL FRAMING PLAN	APPROVAL	07/29/14	E5.3	ARCHITECTURAL DETAILS	APPROVAL	07/29/14				
E2.4	FOURTH LEVEL FRAMING PLAN	APPROVAL	07/29/14	E5.4	ARCHITECTURAL DETAILS	APPROVAL	07/29/14				
E2.5	FIFTH LEVEL FRAMING PLAN	APPROVAL	07/29/14	E5.5	ARCHITECTURAL DETAILS	APPROVAL	07/29/14				
E2.6	SIXTH LEVEL FRAMING PLAN	APPROVAL	07/29/14	E5.6	ARCHITECTURAL DETAILS	APPROVAL	07/29/14				
E3.1	WEST ELEVATION ALONG GRID 15.54	APPROVAL	07/29/14	E5.7	ARCHITECTURAL DETAILS	APPROVAL	07/29/14				
E3.2	EAST ELEVATION ALONG GRID 16.5	APPROVAL	07/29/14	E5.8	ARCHITECTURAL DETAILS	APPROVAL	07/29/14				
E3.3	WEST ELEVATION ALONG GRID 18.3	APPROVAL	07/29/14	E5.9	ARCHITECTURAL DETAILS	APPROVAL	07/29/14	S.1	SPECIAL PRODUCTION HARDWARE	APPROVAL	07/29/14
E3.4	EAST ELEVATION ALONG GRID 19.4	APPROVAL	07/29/14	E5.10	ARCHITECTURAL DETAILS	APPROVAL	07/29/14	S.2	SPECIAL PRODUCTION HARDWARE	APPROVAL	07/29/14
E3.5	SOUTH ELEVATION ALONG GRID J.2	APPROVAL	07/29/14	E5.11	ARCHITECTURAL DETAILS	APPROVAL	07/29/14	S.3	SPECIAL PRODUCTION HARDWARE	APPROVAL	07/29/14
E3.6	NORTH ELEVATION ALONG GRID H.3	APPROVAL	07/29/14	E5.12	ARCHITECTURAL DETAILS	APPROVAL	07/29/14	S.4	SPECIAL PRODUCTION HARDWARE	APPROVAL	07/29/14
E3.7	SOUTH ELEVATION ALONG GRID G	APPROVAL	07/29/14	E5.13	ARCHITECTURAL DETAILS	APPROVAL	07/29/14	S.5	SPECIAL PRODUCTION HARDWARE	APPROVAL	07/29/14
E3.8	SOUTH ELEVATION ALONG GRID F	APPROVAL	07/29/14	E5.14	ARCHITECTURAL DETAILS	APPROVAL	07/29/14	S.6	SPECIAL PRODUCTION HARDWARE	APPROVAL	07/29/14
E4.1	RAMP SECTIONS	APPROVAL	07/29/14	E5.15	ARCHITECTURAL DETAILS	APPROVAL	07/29/14	S.7	SPECIAL PRODUCTION HARDWARE	APPROVAL	07/29/14
E4.2	RAMP SECTIONS	APPROVAL	07/29/14	E6.1	CONNECTION DETAILS	APPROVAL	07/29/14	SC.1	SPECIAL CONTRACTOR HARDWARE	APPROVAL	07/29/14
E4.3	RAMP SECTIONS	APPROVAL	07/29/14	E6.2	CONNECTION DETAILS	APPROVAL	07/29/14	SC.2	SPECIAL CONTRACTOR HARDWARE	APPROVAL	07/29/14
E4.4	RAMP SECTIONS	APPROVAL	07/29/14	E6.3	CONNECTION DETAILS	APPROVAL	07/29/14	SE.1	SPECIAL ERECTION HARDWARE	APPROVAL	07/29/14
E4.5	RAMP SECTIONS	APPROVAL	07/29/14	E6.4	CONNECTION DETAILS	APPROVAL	07/29/14	SE.2	SPECIAL ERECTION HARDWARE	APPROVAL	07/29/14
E4.6	RAMP SECTIONS	APPROVAL	07/29/14	E6.5	CONNECTION DETAILS	APPROVAL	07/29/14	SE.3	SPECIAL ERECTION HARDWARE	APPROVAL	07/29/14
E4.7	RAMP SECTIONS	APPROVAL	07/29/14	E6.6	CONNECTION DETAILS	APPROVAL	07/29/14	SE.4	SPECIAL ERECTION HARDWARE	APPROVAL	07/29/14

GENERAL NOTES

CONCRETE:

A. SEE PRECAST CALCULATIONS FOR CONCRETE DESIGN STRENGTHS.

REINFORCING:

- A. WELDABLE REBAR SIZES #4 THRU #8 SHALL CONFORM TO ASTM A706 GRADE 60 U.N.O.
- B. NON WELDED REBAR SIZES #3 THRU #18 SHALL CONFORM TO ASTM A615 GRADE 60 U.N.O.
- C. PRESTRESSING STRAND SHALL CONFORM TO ASTM 416 SEVEN-WIRE (270 KSI).

OPENINGS:

PRECAST MANUFACTURER SHALL PROVIDE ONLY THOSE OPENINGS SHOWN ON THEIR SHOP DRAWINGS. PRECAST MEMBERS SHALL NOT BE CUT OR MODIFIED WITHOUT PRIOR APPROVAL OF PRECASTER. ALL SITE OPENINGS TO BE CORE DRILLED OR SAW CUT UNLESS APPROVED OTHERWISE BY PRECASTER. DRILLED HOLES FOR ATTACHMENT HARDWARE, CONDUIT RUNS ETC. (e.g. LIGHTING HARDWARE) TO BE APPROVED BY PRECASTER.

TOLERANCES:

PRECAST AND PRESTRESSED PRODUCTS WILL BE FABRICATED TO TOLERANCES SPECIFIED IN P.C.I. MNL-116 "MANUAL FOR QUALITY CONTROL FOR PLANTS AND PRODUCTION OF STRUCTURAL PRECAST CONCRETE PRODUCTS. AND ANY APPLICABLE SPECIFICATIONS.

CAMBER:

PRIOR TO CASTING TOPPING, DIFFERENTIAL CAMBER IS LIMITED TO 3/8" MAX. BETWEEN ADJACENT PRECAST MEMBERS. UNLESS OTHERWISE NOTED, TOPPING THICKNESS SHALL NOT EXCEED THE CALLED OUT TOPPING THICKNESS BY MORE THAN 3/8". CONTRACTOR AND OR PRECASTER NEED TO TAKE NECESSARY STEPS TO MAINTAIN REQUIREMENTS INCLUDING, BUT NOT LIMITED TO, ADJUSTING BEARING ELEVATIONS, USE OF SHORINGS, MODIFYING PRECAST DIMENSIONS ETC. IN ADDITION, PROPER SLOPE OF THE ROOF SHALL BE MAINTAINED FOR DRAINAGE AS INDICATED IN THE ARCHITECTURAL DRAWINGS.

INSERTS AND HARDWARE:

A. ALL MISCELLANEOUS STEEL INSERTS, HANGERS AND ATTACHMENTS FOR ELECTRICAL, MECHANICAL AND OTHER TRADES SHALL BE FIELD INSTALLED BY TRADES CONCERNED UNLESS SHOWN ON APPROVED SHOP DRAWINGS AND INCLUDED AS A PART OF PRECAST CONTRACT. (SEE NOTES ON "OPENINGS" ABOVE).

SITE INSTALLED HARDWARE:

- A. ALL ANCHORAGE ASSEMBLIES CAST IN BY CONTRACTOR SHALL BE WITHIN ± 1/4" MAX. OF THE CORRECT PLAN POSITION, SHALL BE PLUMB AND TRUE, AND SHALL BE PROTECTED FROM RUST AND DAMAGE.
- B. BEARING SURFACES FOR PRECAST SHALL BE A LEVEL PLANE AND AT THE CORRECT (± 1/4" MAX.) ELEVATION IN ORDER TO RECEIVE PRECAST MEMBERS.

CAULKING, SEALING & GROUTING:

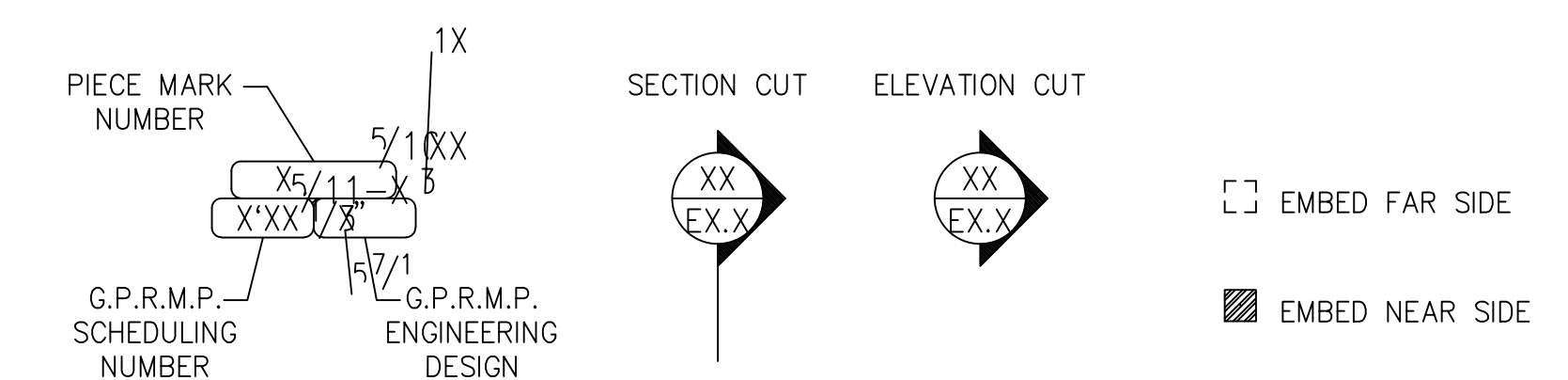
PRECAST MANUFACTURER SHALL NOT BE RESPONSIBLE FOR CAULKING, SEALING OR GROUTING OF ANY PRODUCTS.

APPROVAL OF DRAWINGS:

DRAWINGS REVIEWED BY EITHER THE ARCHITECT OR ENGINEER AND NOT STAMPED REJECTED OR REVISE AND RESUBMIT TRANSMITTED BY THE GENERAL CONTRACTOR, WILL CONSTITUTE THE RELEASE FOR PRODUCTION OF THE ITEMS COVERED BY THOSE DRAWINGS.

GPRM PRESTRESS PROFESSIONAL ENGINEER SEAL APPLIES ONLY TO GPRM PRESTRESS PRODUCTS & CONNECTIONS DESIGNED TO MEET THE STRUCTURAL CRITERIA PROVIDED BY THE ENGINEER OF RECORD. THE ENGINEER OF RECORD MUST REVIEW AND APPROVE GPRM WORK FOR GENERAL CONFORMANCE WITH THE PROJECT DESIGN CONCEPT AND GENERAL COMPLIANCE WITH INFORMATION GIVEN IN THE CONTRACT DOCUMENTS.

LEGEND:



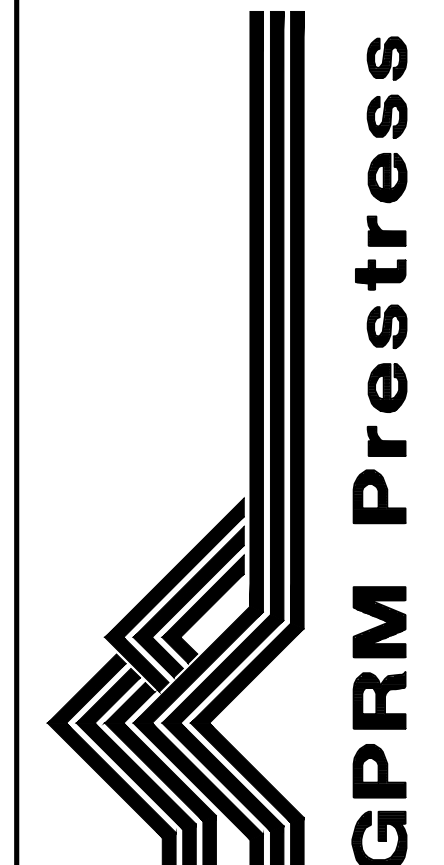
APPROVER NOTE:

THESE DRAWINGS ARE BEING SUBMITTED WITHOUT THE FOLLOWING DUE TO LACK OF INFORMATION AT TIME OF SUBMITTAL:

1. STEEL EMBEDS IN COLUMNS OR SPANDRELS FOR STEEL FRAMING BY OTHERS.
 - A. GPRM IS UNABLE TO DETERMINE EMBED SIZE NEEDED WITHOUT HAVING STEEL CONNECTION ANGLE LENGTHS FOR BOLTED CONNECTIONS FROM STEEL SUPPLIER AT EACH MEMBER.
2. STEEL EMBEDS IN SPANDRELS AND OTHER PRECAST PRODUCTS FOR BRACING TOPS OF CMU WALLS.
 - A. DETAILS ON S4.21 DO NOT ADDRESS PRECAST PRODUCTS SPECIFICALLY. G.C. AND E.O.R. TO COORDINATE CONNECTION REQUIREMENTS AND SUPPLY FURTHER INFORMATION.
2. STEEL EMBEDS IN SPANDRELS AT LINE 15.54 AND AT LINE 19.4 FOR STEEL DECK WELDING.
 - A. DETAILS ON S5.4 CALL FOR THESE EMBEDS TO BE CENTERED IN TOP OF PRECAST, TO BE CONT. AND TO HAVE HOLES DRILLED FOR CMU DOWELS. TO AVOID DRILLING HOLES AND THE POSSIBILITY OF THE STEEL DECK BEING WELDED AND HIDING FORM SAVERS, GPRM PROPOSES THE STEEL DECK EMBED(S) BE POSITIONED AT THE SIDE OF PRECAST WHERE THE DECKING OCCURS AND THAT THE DECK AND DECK EMBED EXTEND OVER TOP OF PRECAST NO MORE THAN 3". SEE 60/E5.10.

SUBMITTED FOR APPROVAL
GPRM PRESTRESS
JULY 29, 2014

INTERNATIONAL MARKET PLACE
 HONOLULU, HAWAII
 ARCHITECTS
 INTERNATIONAL MARKET PLACE
 HONOLULU, HAWAII
 ARCHITECTS



--	--	--	--	--	--	--	--	--	--	--	--

International Market Place
Parking Ramp
 Honolulu, Hawaii

SHEET INDEX
 EC
 1/18/2014

R13033