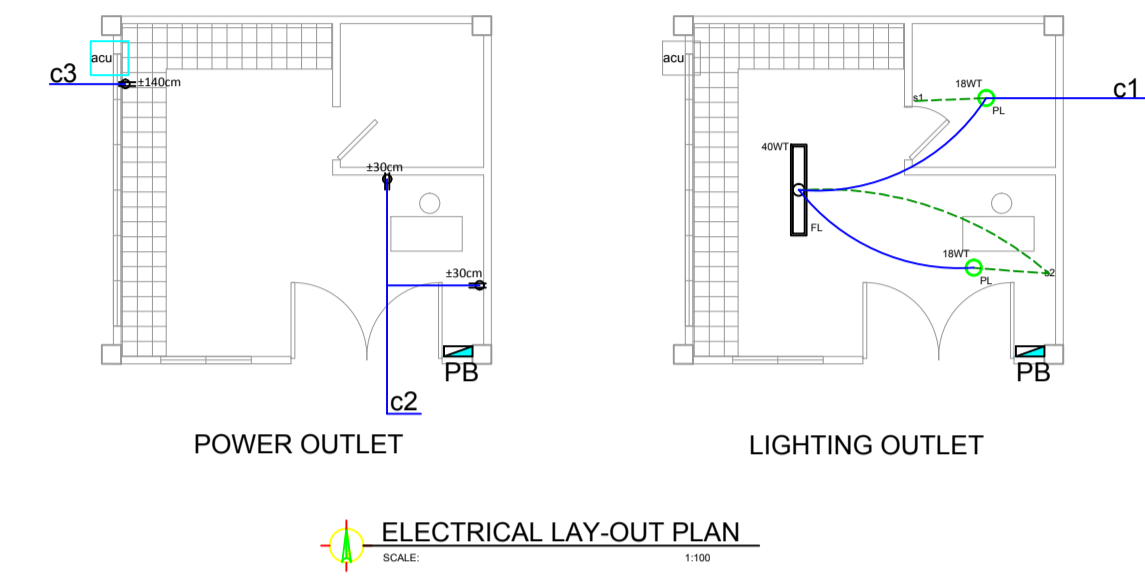
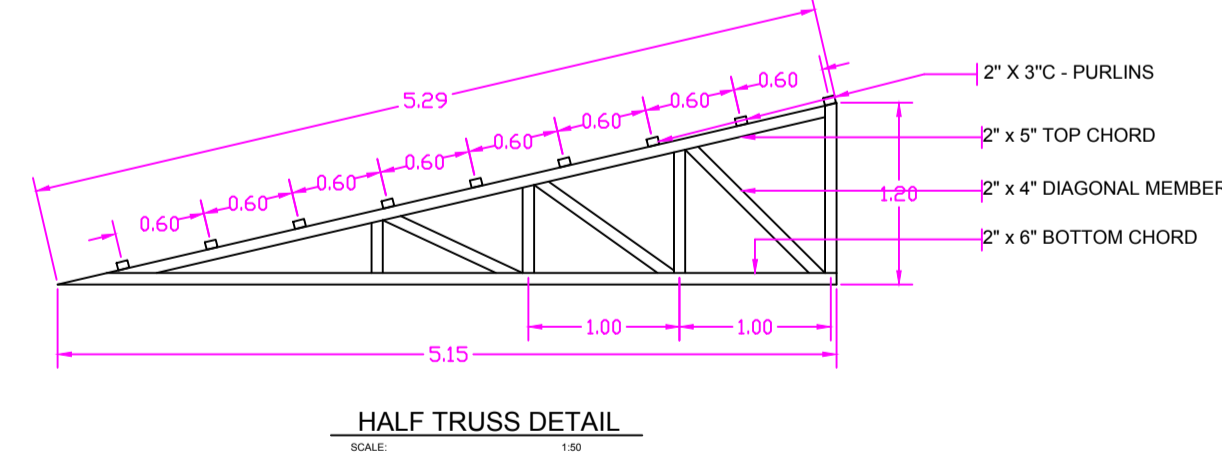
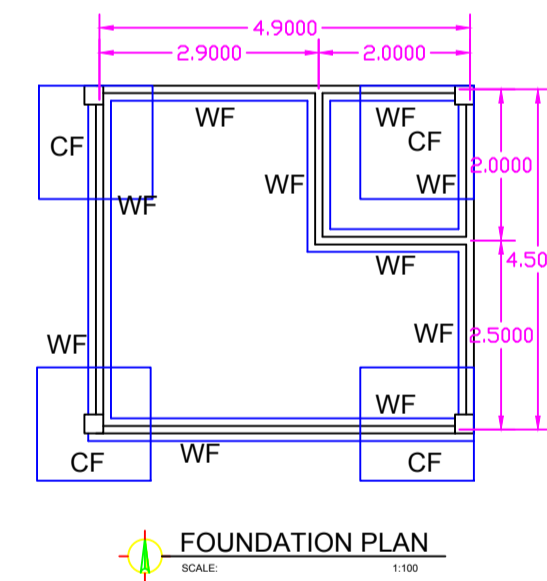
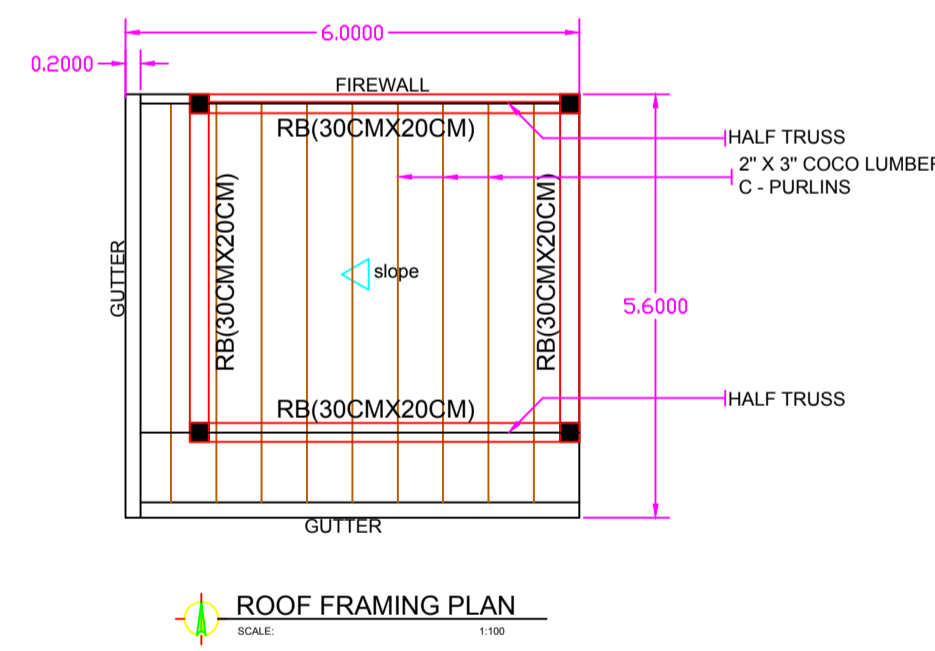
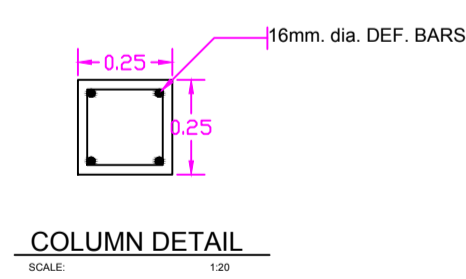
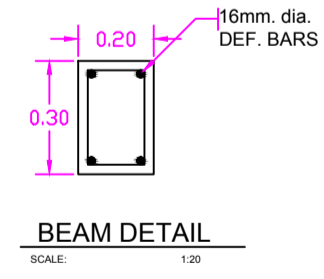
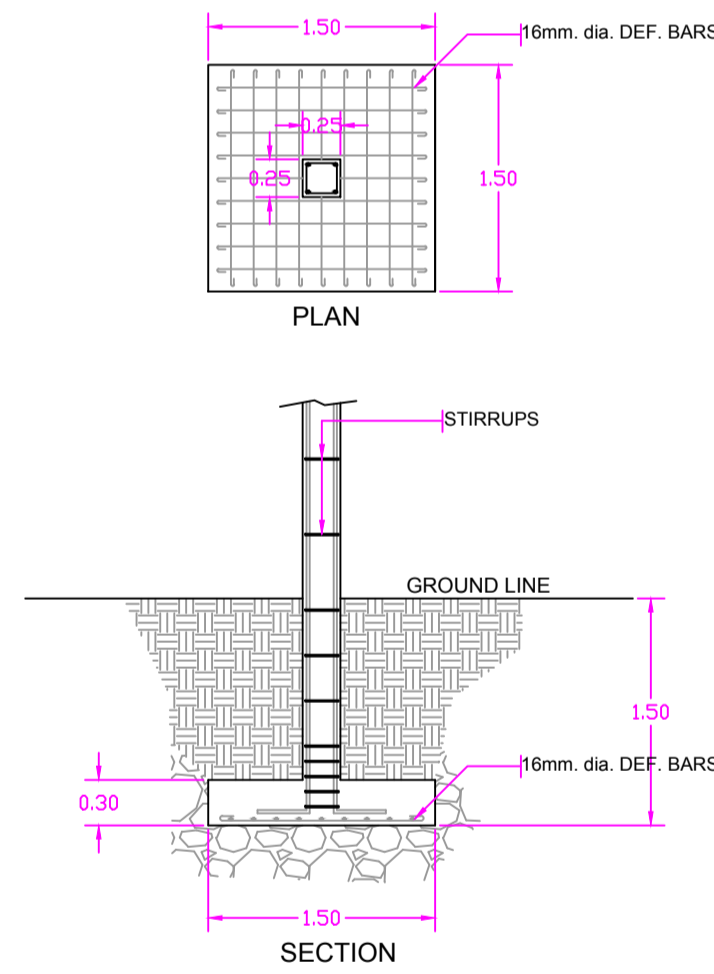
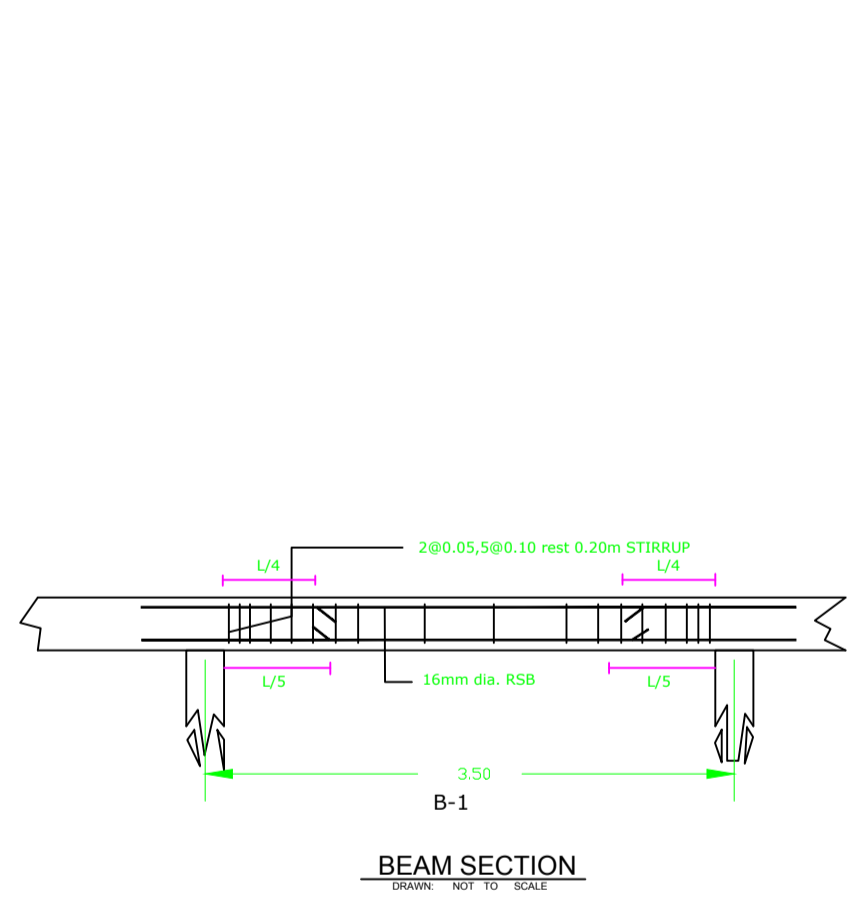


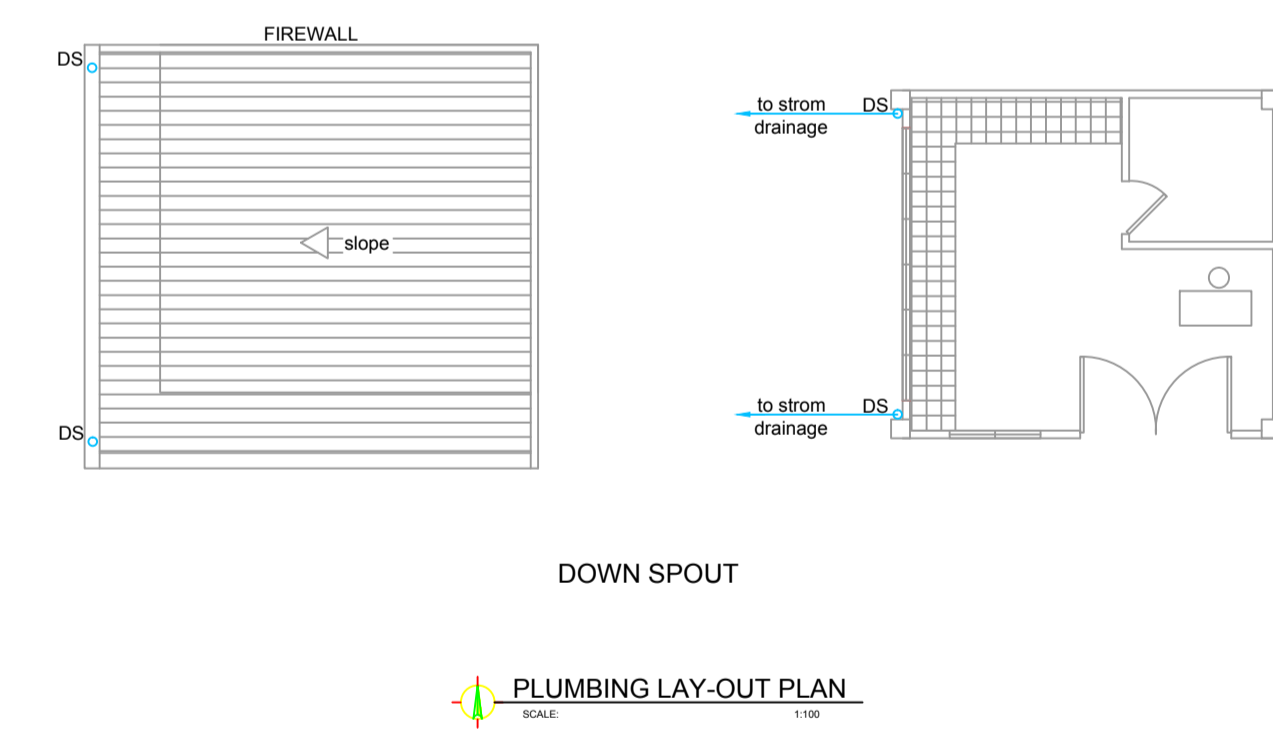
# ARCHITECTURAL



# ELECTRICAL



# STRUCTURAL



# PLUMBING

<p><b>CONTRACTOR</b></p> <p><b>CAVDEAL</b> Cavite Ideal International Construction and Development Corporation 230 EDISA Ex. Bldg. San Rafael Pinar City Tel No. 655-82254-5433 / 655-82254-5433 E-Mail: caviteideal.com</p> <p><b>CATEGORY "A" - GENERAL BUILDING &amp; ENGINEERING</b></p>	<p><b>SUBMITTED BY:</b></p> <p><b>EDGAR D. TUPELL</b> PROJECT MANAGER</p>	<p><b>PROJECT &amp; LOCATION:</b></p> <p>Road Upgrading (Gravel to Paved) Based on GRS/TB for Upgrading to PRS (HDM-4 Proj. Analysis) (Intermittent Sections), Gingoog-Claveria-Villanueva Road Mat-I - Lanise Section, Misamis Oriental II</p>	<p><b>SHEET CONTENT:</b></p>	<p>REPUBLIC OF THE PHILIPPINES DEPARTMENT OF PUBLIC WORKS AND HIGHWAYS OFFICE OF REGIONAL DIRECTOR Region - X Engineers' Hill, Bulua, Cagayan de Oro City</p>	<p><b>SUBMITTED BY:</b></p> <p><b>SABENIANO D. CALIAO JR.</b> PROJECT ENGINEER</p> <p><b>LILIBETH N. APARECIO</b> PROJECT SUPERVISOR/PROJECT</p>	<p><b>CHECKED BY:</b></p> <p><b>ARTHUR M. CUPAY</b> CHIEF PLANNING AND DESIGN DIVISION</p>	<p><b>SUBMITTED:</b></p> <p><b>EVELYN T. BARROSO, PhD</b> REGIONAL DIRECTOR REGION - X</p>	<p><b>REVIEWED AS PRESENTED:</b></p> <p><b>DANILO L. BALISI</b> CHIEF, HIGHWAY DIVISION BUREAU OF DESIGN</p>	<p><b>RECOMMENDING APPROVAL:</b></p> <p><b>GILBERTO S. REYES</b> DIRECTOR BUREAU OF DESIGN</p>	<p><b>APPROVED:</b></p> <p><b>RAUL C. ASIS</b> UNDERSECRETARY</p>	<p><b>SEAT NO.:</b></p>	<p><b>SHEET NO.:</b></p> <p><b>AS-STAKED</b></p>
--	---	---	------------------------------	---	--	--	--	--	--	---	-------------------------	--