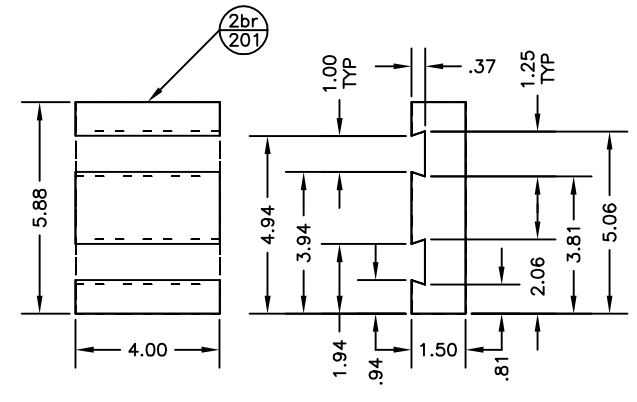
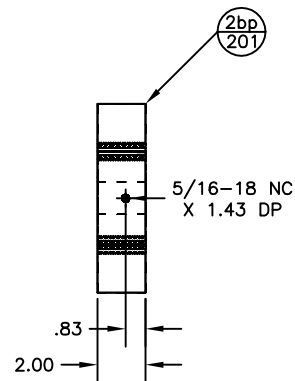
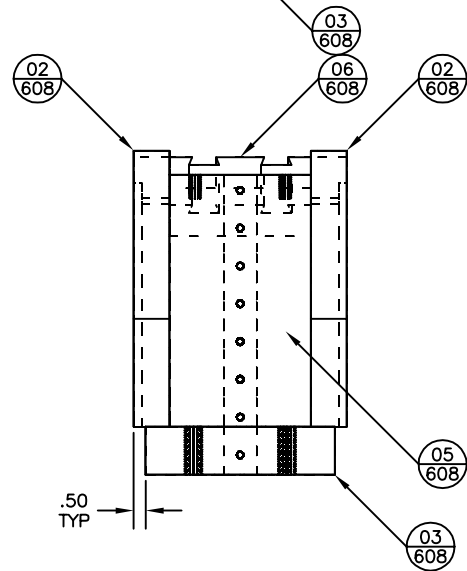


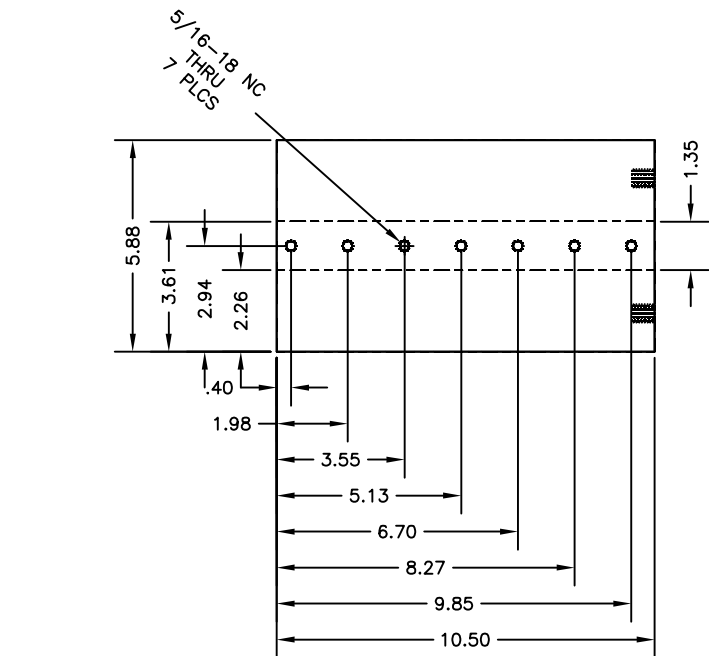
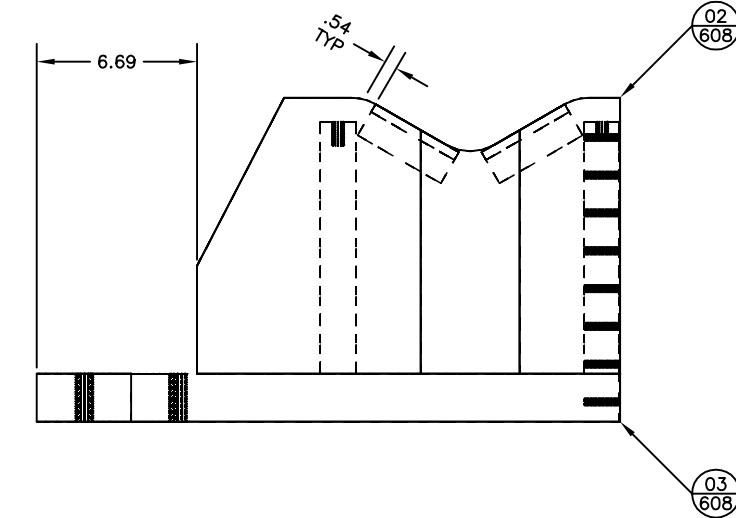
03 ITEM DETAIL
608 QTY: 02



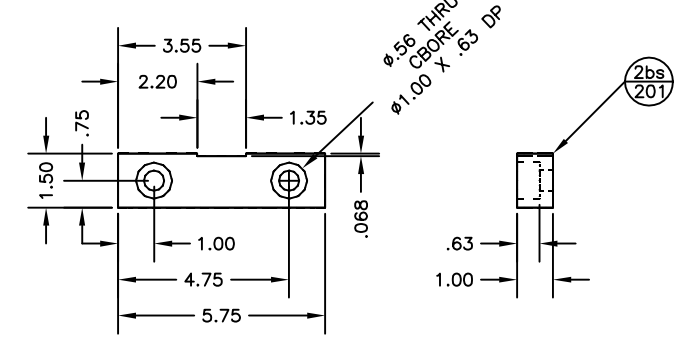
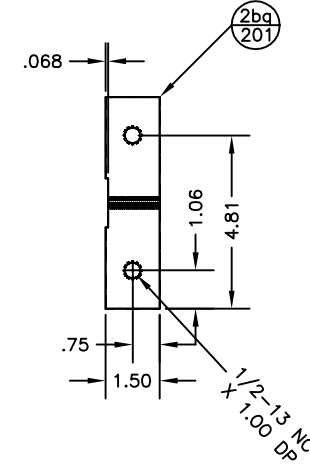
06 ITEM DETAIL
608 QTY: 04



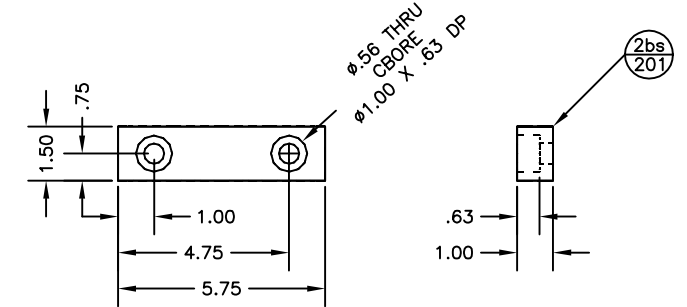
01 ITEM WELDMENT
608 QTY: 02



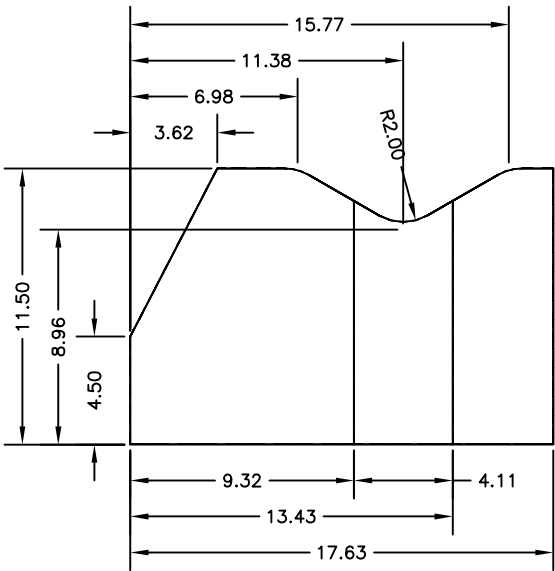
04 ITEM DETAIL
608 QTY: 02



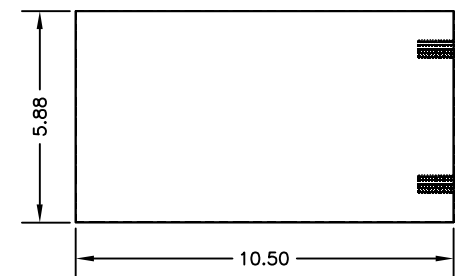
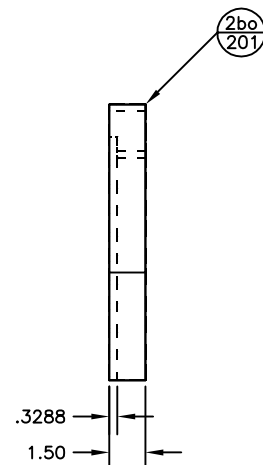
07 ITEM DETAIL
608 QTY: 02



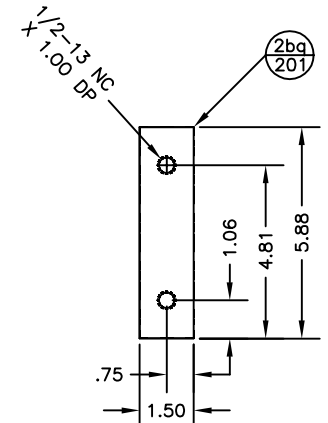
08 ITEM DETAIL
608 QTY: 02



02 ITEM DETAIL
608 QTY: 04



05 ITEM DETAIL
608 QTY: 02



INSPECTED BY:	DATE:	PENNINGTON/FABCO 7512 E. HWY 37, TUTTLE, OK 73089 (405) 392-4545
TOLERANCES STANDARD UNLESS OTHERWISE SPECIFIED		
STANDARD TOLERANCES	1) ALL MACHINED SURFACE FINISH TO BE	BAKER-HUGHES PULLING UNIT CLAMP CARRIAGE JAW DETAILS
X/XX +/- 1/16"	2) ALL PARTS SHALL BE FREE OF ALL SURFACE	
.XX +/- .03"	DEFECTS, CHIPS, CUTTING FLUIDS & GREASE.	
.XXX +/- .005"	3) BREAK ALL SHARP EDGES AND CORNERS.	
ANGLES +/- 1°	4) ALL PARTS TO BE INSPECTED FOR	DWG NO: BHM-13663
MACHINE FINISH 125/	ACCURACY BEFORE SHIPPING.	DATE: 08/28/14
PENNINGTON/FABCO		DRN: J SHIELD
THIS DOCUMENT (TOGETHER WITH THE INFORMATION THEREON) IS THE PROPERTY OF PENNINGTON/FABCO, IS CONFIDENTIAL, AND IS UNPUBLISHED WORK, WITH ALL RIGHTS RESERVED TO PENNINGTON/FABCO. THIS DOCUMENT IS SUBJECT TO RETURN ON DEMAND, MAY NOT BE COPIED OR REPRODUCED IN WHOLE OR IN PART WITHOUT EXPRESSED CONSENT OF PENNINGTON/FABCO, NOR MAY IT BE USED DIRECTLY OR INDIRECTLY IN ANY WAY DETRIMENTAL TO PENNINGTON/FABCO'S INTEREST.		CHK:
		SHT 608 REV: 00