

E-1434/1443

CRUDE/OVERHEAD EXCHANGER

DESIGN SHELL: 500 PSIG AT 350°F

DESIGN TUBE: 350 PSIG AT 350°F

DUTY: 43.29 MMBTU/HR

NEW

E-1435

CRUDE/DIESEL PRODUCT EXCHANGER

DESIGN SHELL: 350°F PSIG AT 500°F

DESIGN TUBE: 500 PSIG AT 350°F

DUTY: 10.36 MMBTU/HR

NEW

E-1436/1447

CRUDE/TOP PUMP AROUND EXCHANGER

DESIGN SHELL: 350 PSIG AT 350°F

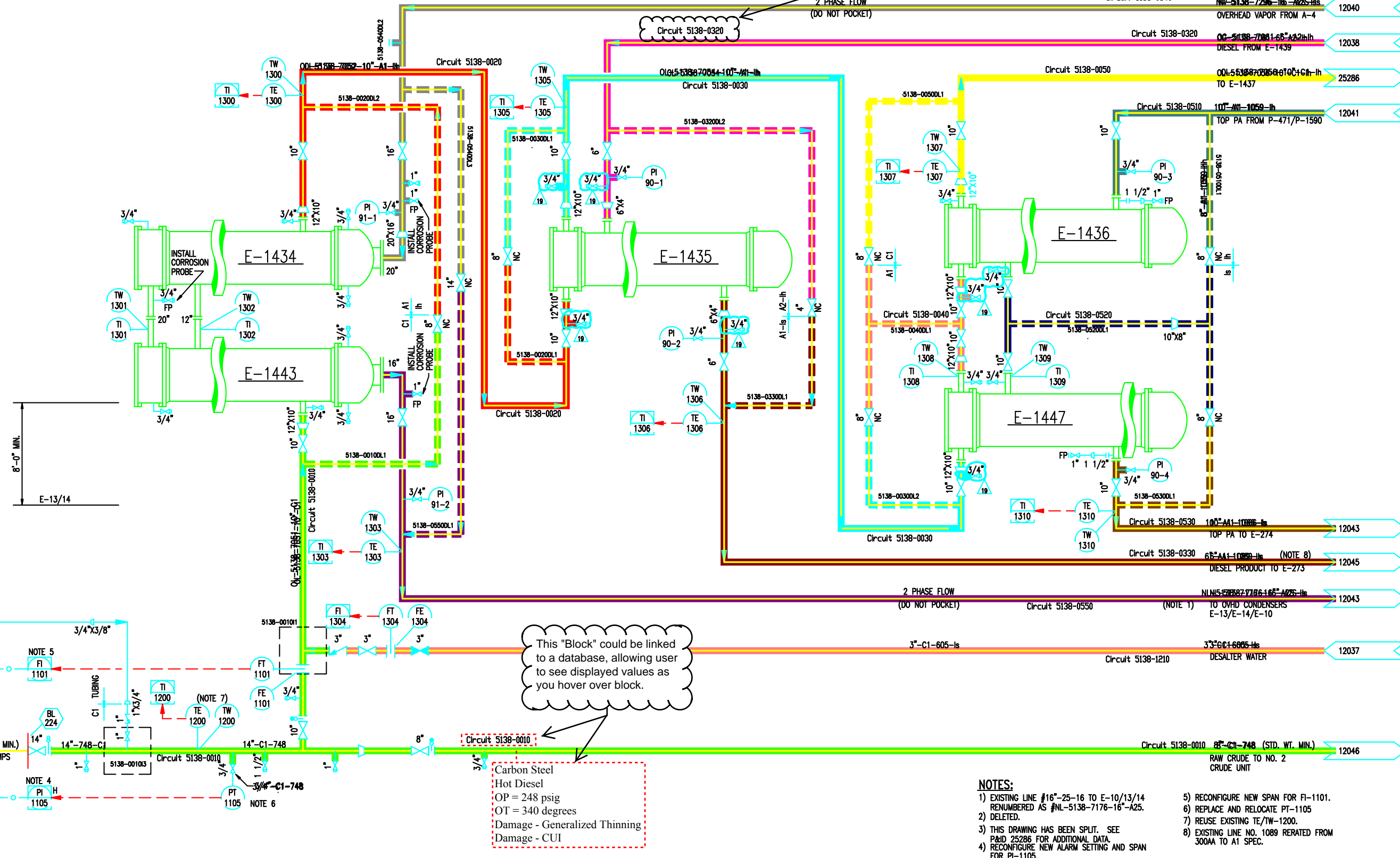
DESIGN TUBE: 500 PSIG AT 350°F

DUTY: 14.80 MMBTU/HR

NEW

This "Block" could be linked to a database, allowing user to see displayed values as you hover over block.

2 PHASE FLOW
(DO NOT POCKET)



This "Block" could be linked to a database, allowing user to see displayed values as you hover over block.

Carbon Steel
Hot Diesel
OP = 248 psig
OT = 340 degrees
Damage - Generalized Thinning
Damage - CUI

NOTES:

- EXISTING LINE #16"-25-16 to E-10/13/14 RENUMBERED AS #NL-5138-7176-16"-A25.
- DELETED.
- THIS DRAWING HAS BEEN SPLIT. SEE P&ID 25286 FOR ADDITIONAL DATA.
- RECONFIGURE NEW ALARM SETTING AND SPAN FOR PI-1105.
- RECONFIGURE NEW SPAN FOR FI-1101.
- REPLACE AND RELOCATE PT-1105
- REUSE EXISTING TE/TW-1200.
- EXISTING LINE NO. 1089 REERATED FROM 300AA TO A1 SPEC.