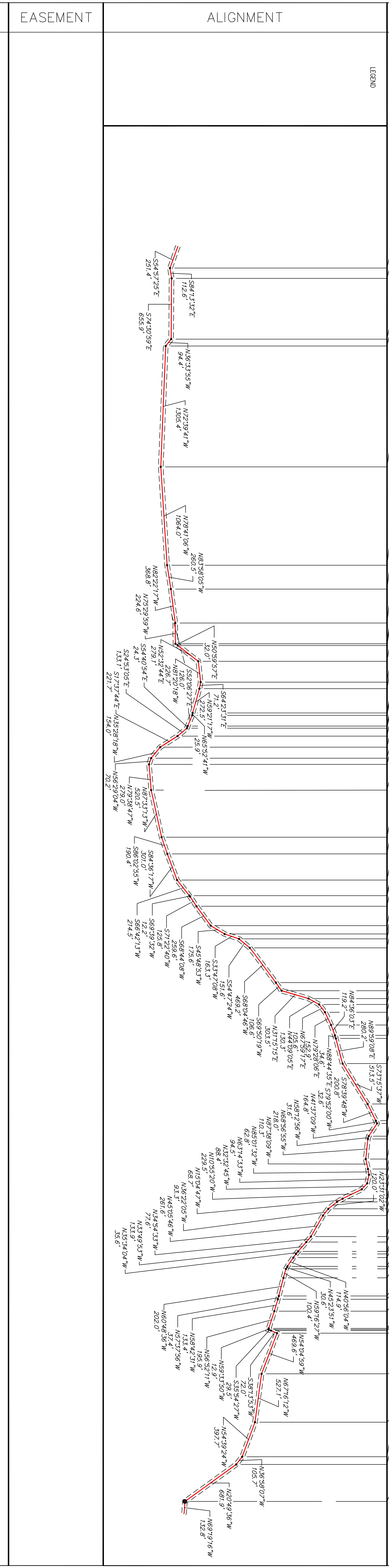
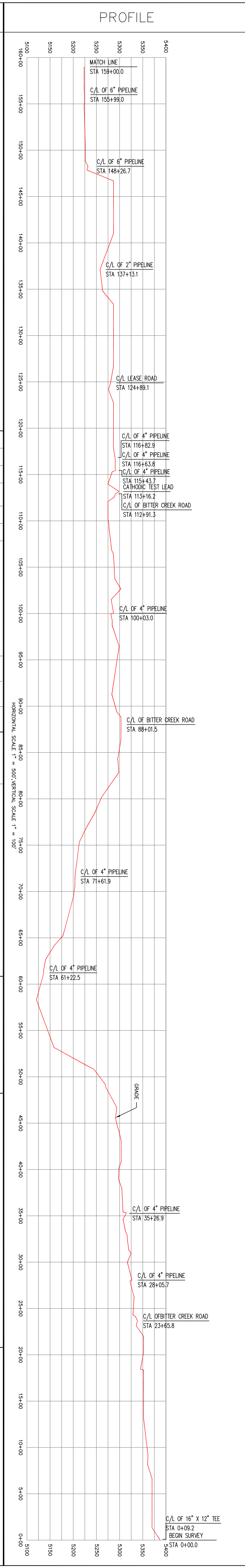


SUMMARY		PROFILE		EASEMENT		ALIGNMENT		STATIONING		OWNERSHIP									
NO.	DESCRIPTION (IN HORIZONTAL DISTANCE)	DATE	BY	NO.	DATE	NO.	DATE	NO.	DATE	NO.	DATE								
<p>REVISIONS</p> <table border="1"> <thead> <tr> <th>NO.</th> <th>DATE</th> <th>BY</th> <th>DESCRIPTION</th> </tr> </thead> <tbody> <tr> <td>1</td> <td>7/31/2008</td> <td>CBB</td> <td>ISSUED FOR RECORD DRAWING</td> </tr> </tbody> </table>												NO.	DATE	BY	DESCRIPTION	1	7/31/2008	CBB	ISSUED FOR RECORD DRAWING
NO.	DATE	BY	DESCRIPTION																
1	7/31/2008	CBB	ISSUED FOR RECORD DRAWING																
<p>REFERENCE DRAWINGS</p> <table border="1"> <thead> <tr> <th>NO.</th> <th>DATE</th> <th>BY</th> <th>DESCRIPTION</th> </tr> </thead> <tbody> <tr> <td>1</td> <td>09-08-16</td> <td>CS</td> <td>BITTER CREEK COMPRESSOR TO SOUTH COMPRESSOR</td> </tr> </tbody> </table>												NO.	DATE	BY	DESCRIPTION	1	09-08-16	CS	BITTER CREEK COMPRESSOR TO SOUTH COMPRESSOR
NO.	DATE	BY	DESCRIPTION																
1	09-08-16	CS	BITTER CREEK COMPRESSOR TO SOUTH COMPRESSOR																
<p>APPROVED FOR CONSTRUCTION</p> <table border="1"> <thead> <tr> <th>NO.</th> <th>DATE</th> <th>BY</th> <th>DESCRIPTION</th> </tr> </thead> <tbody> <tr> <td></td> <td></td> <td></td> <td></td> </tr> </tbody> </table>												NO.	DATE	BY	DESCRIPTION				
NO.	DATE	BY	DESCRIPTION																
<p>PREPARED BY:</p> <table border="1"> <thead> <tr> <th>NO.</th> <th>DATE</th> <th>BY</th> <th>DESCRIPTION</th> </tr> </thead> <tbody> <tr> <td></td> <td></td> <td></td> <td></td> </tr> </tbody> </table>												NO.	DATE	BY	DESCRIPTION				
NO.	DATE	BY	DESCRIPTION																
<p>SCALE</p> <table border="1"> <thead> <tr> <th>NO.</th> <th>DATE</th> <th>BY</th> <th>DESCRIPTION</th> </tr> </thead> <tbody> <tr> <td></td> <td></td> <td></td> <td></td> </tr> </tbody> </table>												NO.	DATE	BY	DESCRIPTION				
NO.	DATE	BY	DESCRIPTION																



STATIONING	DESCRIPTION	STATIONING
STA. 159+00.0	MATCH LINE	16339
STA. 158+29.3	WELD W/XRAY	824
STA. 156+48.6	POINT OF INTERSECTION	2916°08' RT
STA. 155+99.0	C/L OF 6" PIPELINE	480
STA. 155+36.0	POINT OF INTERSECTION	08°42'33" LT
STA. 154+75.6	WELD W/XRAY	823
STA. 150+36.7	WELD W/XRAY	822
STA. 148+80.1	POINT OF INTERSECTION	37°57'05" LT
STA. 148+26.7	C/L OF 6" PIPELINE	473
STA. 147+85.7	POINT OF INTERSECTION	36°05'47" RT
STA. 146+69.0	WELD W/XRAY	821
STA. 140+99.3	WELD W/XRAY	820
STA. 137+13.1	C/L OF 2" PIPELINE	466
STA. 134+80.3	POINT OF INTERSECTION	06°01'24" RT
STA. 133+38.1	WELD W/XRAY	828
STA. 130+36.7	WELD W/XRAY	829
STA. 126+71.0	WELD W/XRAY	830
STA. 124+89.1	C/L LEASE ROAD	458
STA. 124+16.3	POINT OF INTERSECTION	05°16'59" RT
STA. 122+75.6	WELD W/XRAY	831
STA. 121+55.8	POINT OF INTERSECTION	01°35'48" LT
STA. 119+03.7	WELD W/XRAY	832
STA. 117+87.0	POINT OF INTERSECTION	06°52'18" LT
STA. 117+06.4	C/L OF 12" RISER	449
STA. 116+82.9	C/L OF 4" PIPELINE	449
STA. 116+63.8	C/L OF 4" PIPELINE	446
STA. 116+04.8	C/L OF LEASE ROAD	443
STA. 115+62.4	POINT OF INTERSECTION	53°30'04" RT
STA. 115+43.7	C/L OF 4" PIPELINE	439
STA. 115+30.4	POINT OF INTERSECTION	01°32'47" LT
STA. 113+97.5	WELD W/XRAY	1626
STA. 113+16.2	CATHODIC TEST LEAD	1625
STA. 112+91.3	C/L OF BITTER CREEK ROAD	434
STA. 112+51.3	POINT OF INTERSECTION	46°06'58" LT
STA. 112+08.8	WELD W/XRAY	580
STA. 110+24.6	POINT OF INTERSECTION	16°56'47" LT
STA. 109+53.4	POINT OF INTERSECTION	05°02'15" LT
STA. 109+25.5	WELD W/XRAY	579
STA. 106+80.9	POINT OF INTERSECTION	06°31'24" RT
STA. 106+55.0	POINT OF INTERSECTION	13°46'14" LT
STA. 105+29.0	POINT OF INTERSECTION	02°34'27" RT
STA. 105+04.7	POINT OF INTERSECTION	29°47'48" LT
STA. 103+71.6	POINT OF INTERSECTION	07°15'22" LT
STA. 102+65.2	WELD W/XRAY	578
STA. 101+49.9	POINT OF INTERSECTION	17°50'34" RT
STA. 100+03.0	C/L OF 4" PIPELINE	16336
STA. 99+95.9	POINT OF INTERSECTION	21°00'46" RT
STA. 99+25.7	POINT OF INTERSECTION	23°09'43" RT
STA. 96+46.7	POINT OF INTERSECTION	07°54'27" RT
STA. 91+26.2	POINT OF INTERSECTION	06°23'52" RT
STA. 89+35.8	POINT OF INTERSECTION	01°26'38" RT
STA. 88+85.0	WELD W/XRAY	577
STA. 88+01.5	C/L OF BITTER CREEK ROAD	405
STA. 86+34.8	POINT OF INTERSECTION	17°54'04" RT
STA. 84+20.3	POINT OF INTERSECTION	02°57'19" LT
STA. 84+08.1	POINT OF INTERSECTION	01°43'08" LT
STA. 82+82.3	POINT OF INTERSECTION	02°38'33" RT
STA. 80+22.7	POINT OF INTERSECTION	22°55'14" RT
STA. 78+47.1	POINT OF INTERSECTION	12°01'46" RT
STA. 76+83.8	POINT OF INTERSECTION	21°00'17" LT
STA. 75+32.2	POINT OF INTERSECTION	12°34'26" LT
STA. 71+61.9	C/L OF 4" PIPELINE	387
STA. 70+63.0	POINT OF INTERSECTION	385
STA. 69+56.4	POINT OF INTERSECTION	01°34'55" LT
STA. 66+52.9	POINT OF INTERSECTION	38°35'04" RT
STA. 65+22.6	POINT OF INTERSECTION	12°53'50" LT
STA. 64+17.0	POINT OF INTERSECTION	23°50'12" LT
STA. 62+64.1	POINT OF INTERSECTION	11°28'49" LT
STA. 61+44.9	POINT OF INTERSECTION	05°07'58" LT
STA. 61+22.5	C/L OF 4" PIPELINE	374
STA. 61+10.3	POINT OF INTERSECTION	01°14'33" LT
STA. 59+93.5	C/L OF SAND WASH	CALC
STA. 58+30.1	POINT OF INTERSECTION	16°43'32" RT
STA. 53+16.6	POINT OF INTERSECTION	05°24'11" LT
STA. 51+51.8	POINT OF INTERSECTION	01°12'12" LT
STA. 50+83.2	POINT OF INTERSECTION	58°30'51" LT
STA. 49+18.4	POINT OF INTERSECTION	16°35'47" RT
STA. 48+86.8	POINT OF INTERSECTION	10°43'59" RT
STA. 46+68.8	POINT OF INTERSECTION	18°41'15" RT
STA. 45+58.5	POINT OF INTERSECTION	02°36'37" LT
STA. 44+95.7	POINT OF INTERSECTION	21°46'59" LT
STA. 44+01.2	POINT OF INTERSECTION	30°41'48" LT
STA. 43+12.8	POINT OF INTERSECTION	21°37'25" LT
STA. 40+83.3	POINT OF INTERSECTION	04°09'27" RT
STA. 40+14.6	POINT OF INTERSECTION	08°26'15" RT
STA. 38+94.6	POINT OF INTERSECTION	12°51'03" RT
STA. 38+01.3	POINT OF INTERSECTION	08°43'41" RT
STA. 35+39.7	POINT OF INTERSECTION	10°11'13" LT
STA. 35+26.9	C/L OF 4" PIPELINE	343
STA. 34+62.1	POINT OF INTERSECTION	01°04'40" LT
STA. 33+28.2	POINT OF INTERSECTION	01°44'11" RT
STA. 32+92.6	POINT OF INTERSECTION	03°13'13" RT
STA. 32+43.8	POINT OF INTERSECTION	02°08'47" RT
STA. 31+28.9	POINT OF INTERSECTION	04°27'47" RT
STA. 30+98.3	POINT OF INTERSECTION	13°52'36" RT
STA. 29+97.9	POINT OF INTERSECTION	01°32'08" RT
STA. 28+05.7	C/L OF 4" PIPELINE	332
STA. 27+95.9	POINT OF INTERSECTION	03°10'39" LT
STA. 27+58.5	POINT OF INTERSECTION	01°04'35" RT
STA. 26+25.1	POINT OF INTERSECTION	01°50'20" LT
STA. 24+29.2	POINT OF INTERSECTION	02°41'39" RT
STA. 24+16.3	POINT OF INTERSECTION	84°31'43" RT
STA. 23+86.8	POINT OF INTERSECTION	02°19'26" LT
STA. 23+65.8	C/L OF BITTER CREEK ROAD	325
STA. 23+14.8	POINT OF INTERSECTION	87°41'08" LT
STA. 22+00.3	WELD W/XRAY	319
STA. 20+23.4	WELD W/XRAY	318
STA. 18+45.2	POINT OF INTERSECTION	13°11'13" RT
STA. 18+35.4	WELD W/XRAY	316
STA. 16+64.6	WELD W/XRAY	315
STA. 14+07.3	WELD W/XRAY	314
STA. 13+18.1	POINT OF INTERSECTION	12°36'48" LT
STA. 9+20.4	POINT OF INTERSECTION	17°41'17" LT
STA. 8+14.7	POINT OF INTERSECTION	16°08'30" LT
STA. 8+14.7	WELD W/XRAY	308
STA. 6+63.8	WELD W/XRAY	307
STA. 3+48.9	WELD W/XRAY	306
STA. 1+32.8	POINT OF INTERSECTION	10°00' RT
STA. 0+09.2	C/L OF 16" X 12" TEE	1601
STA. 0+00.0	BEGIN SURVEY @ 12" VALVE	1602