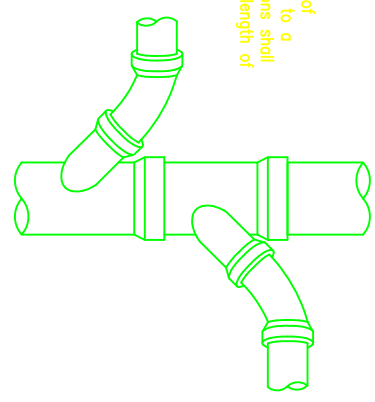
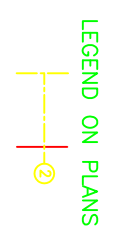


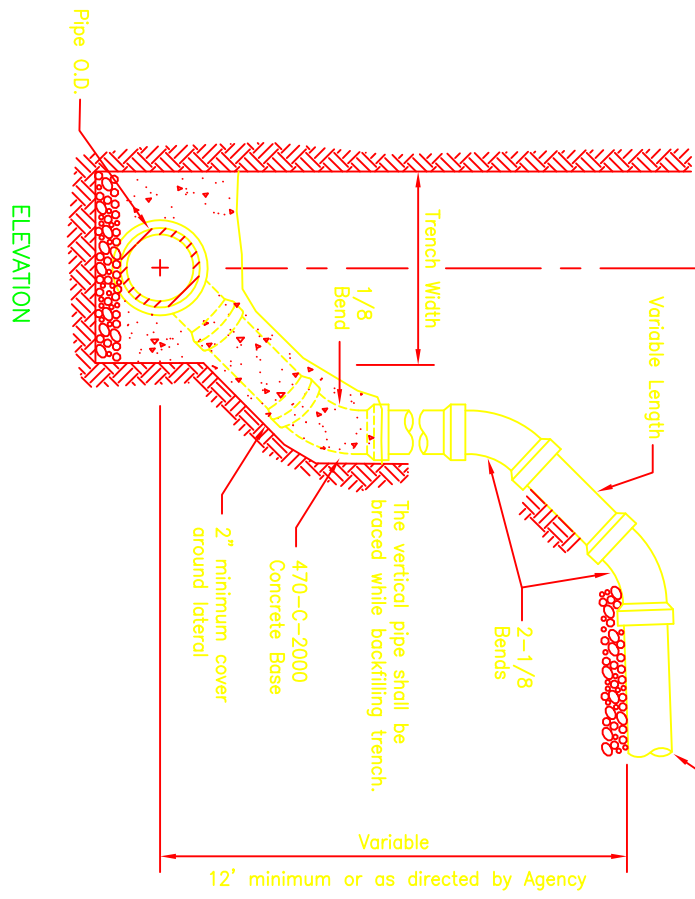
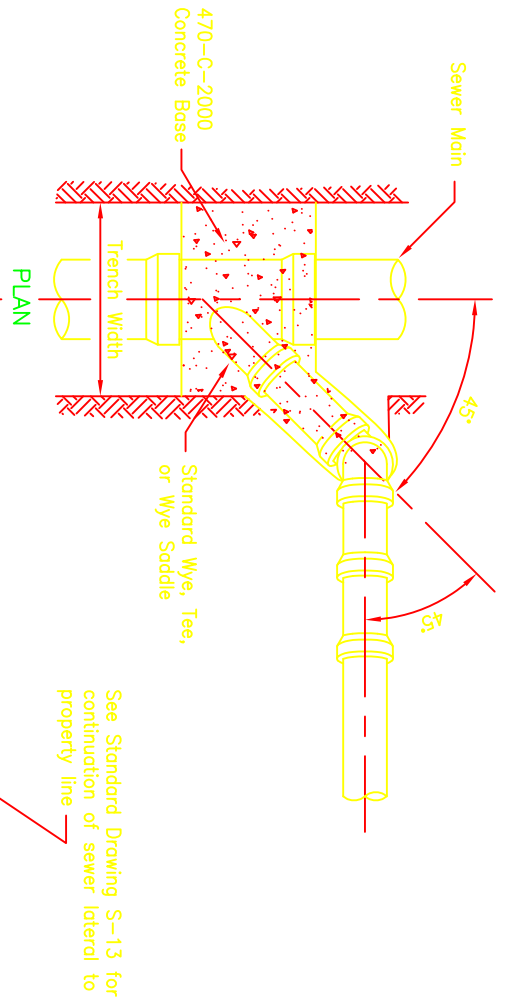
Detail showing the manner of connecting opposite laterals to a sewer main. Two connections shall not be made in the same length of pipe.



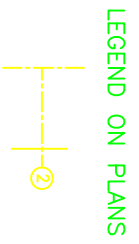
- NOTES**
1. In no case shall a lateral connect to the sewer main directly on top of the pipe.
 2. Sewer laterals shall have a minimum slope of 2%.
 3. All joints on sewer lateral pipe shall be compression type or approved solvent weld.
 4. Lateral shall extend to property line unless otherwise shown on plans.



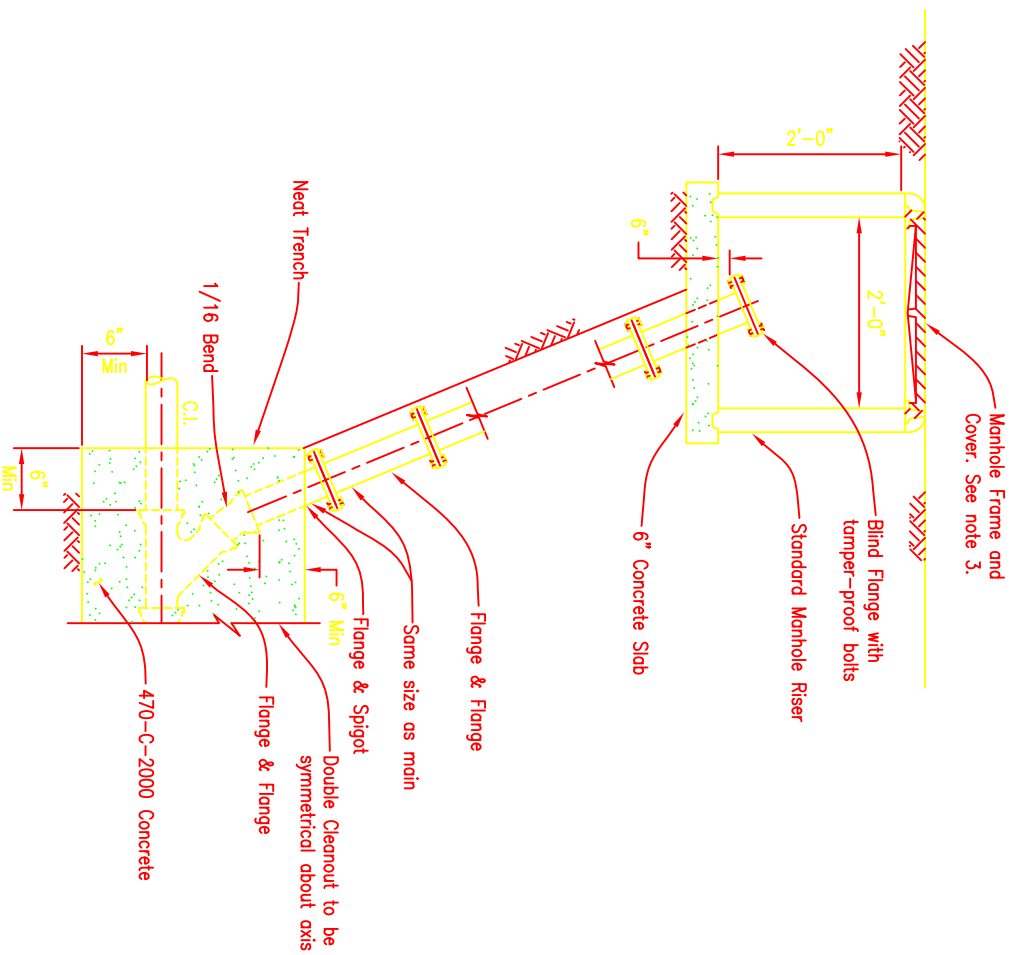
HOUSE CONNECTION
(SEWER LATERAL)



NOTE
 All joints on sewer lateral pipe shall be compression type or approved solvent weld.



DEEP CUT HOUSE CONNECTION
 (SEWER LATERAL)



NOTES

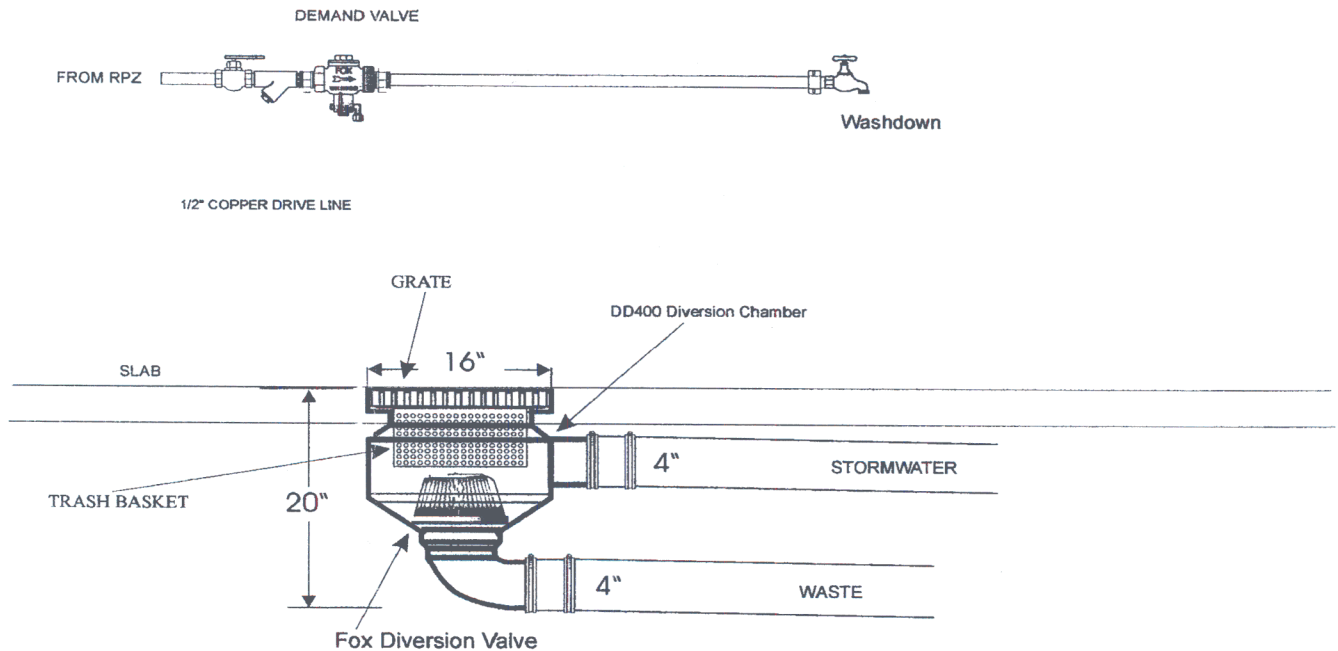
1. Similar polyvinyl chloride components may be used in accordance with A.S.T.M. Standard Specification D-3033.
2. Concrete slab shall be 560-C-3250 concrete.
3. Use heavy duty manhole frame and cover, Standard Drawing M-1, in areas subject to vehicular traffic; use light duty manhole frame and cover, Standard Drawing M-2, in all other locations.

LEGEND ON PLANS





DEMAND DRIVEN WASHDOWN SYSTEM MODEL :DD400



Once your Wash down equipment that is connected downstream of the FOX Demand Valve is activated, the Diversion Valve will open containing your waste. When Wash down finishes, the Diversion Valve will close protecting your waste treatment system from the infiltration of clean rainwater .

The Fox Demand Driven Diversion Valve System is designed to allow all your Wash down water to go to treatment while allowing rainwater to go to storm water, meeting the local authorities requirements.

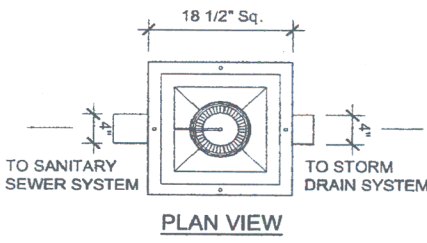
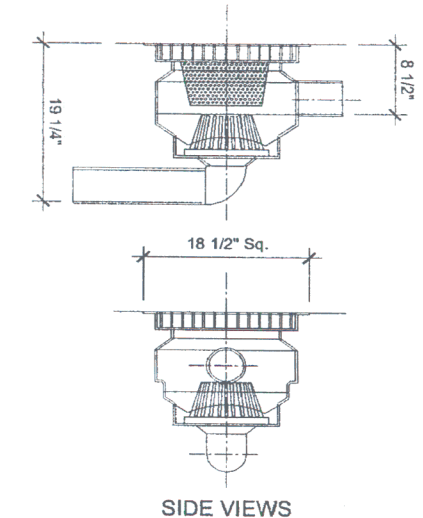
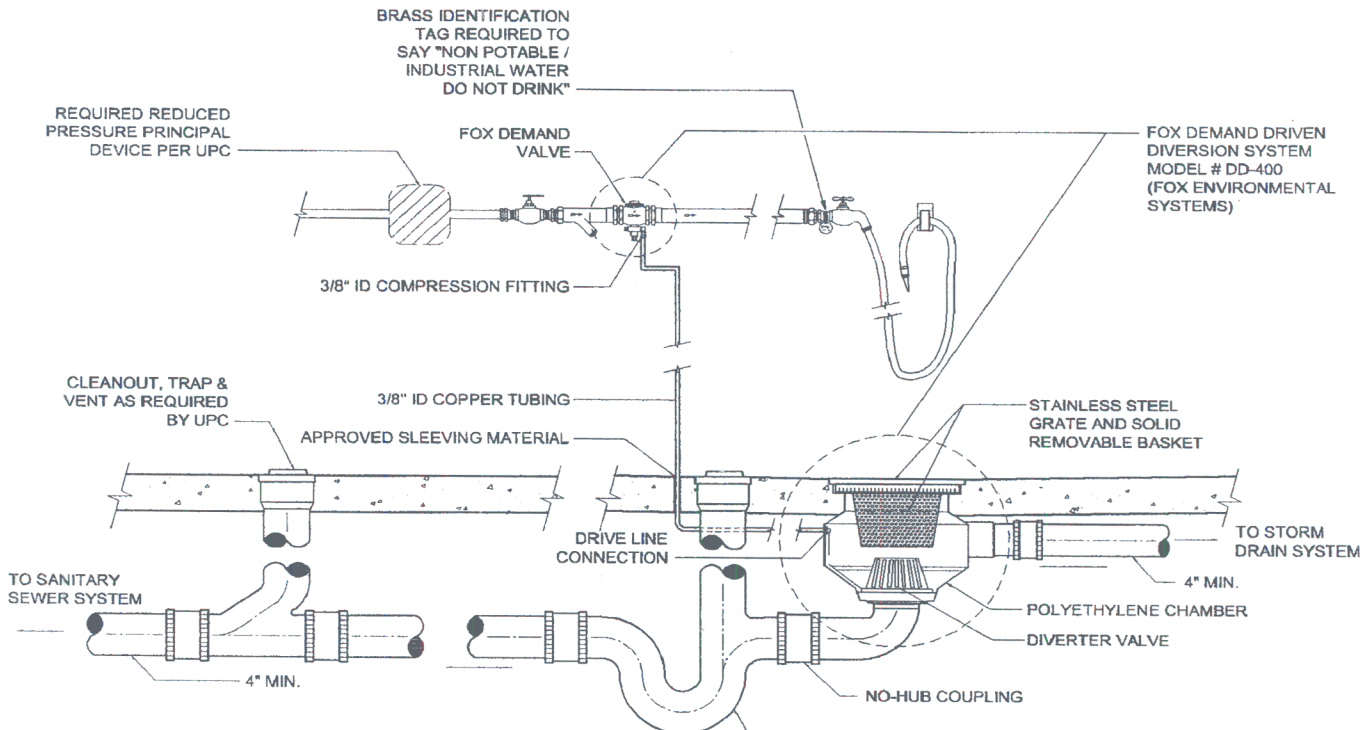
The Fox Diversion System will divert the Trade waste generated by washdown off open areas as long as the washdown equipment used is located downstream of the Fox demand Valve.

Good housekeeping practices of your Wash down slab area and the diversion pit will ensure correct operation of your valve system.

All drains and silt traps must be kept clean of debris and silt to protect the diversion valve and your waste treatment process system.

Generally the best advice here is to use common sense and to try and limit the amount of solids and silt from entering the system. Drainage systems are designed for liquids only.


**The 400Series Diversion system is suitable for Non Silt applications only.
If used in heavy Silt Areas the manufacturers Warranty may be Void.
To ensure correct usage contact a Fox Environmental Systems Representative.**



GENERAL NOTES:

1. GENERAL NOTES FROM CITY OF LOS ANGELES RESEARCH REPORT RR-5532.
2. THE FOX ENVIRONMENTAL SYSTEMS DEMAND DIVERSION SYSTEM SHALL BE INSTALLED IN COMPLIANCE WITH THE CITY OF LOS ANGELES STANDARDS AND REQUIREMENTS.
3. THE MAXIMUM INLET PRESSURE TO THE DEMAND VALVE IS 200 PSI. THE MINIMUM INLET PRESSURE TO THE DEMAND VALVE SHALL BE SUCH THAT NOT LESS THAN 4 PSI SHALL BE DELIVERED TO THE DIVERTER VALVE.
4. THE MAXIMUM FLOW RATE OF THE HOSE BIBB AND ALL OTHER SOURCES DRAINING INTO THE BASIN SHALL BE NOT GREATER THAN 210 GPM FOR THE MODEL DD-400.
5. THE DIVERTER VALVE SHALL BE MARKED "EDS", "DEMAND DIVERSION SYSTEM", "MADE IN AUSTRALIA". THE DEMAND VALVE SHALL BE MARKED "FOX ENVIRONMENTAL SYSTEM", AND "F.E.S."
6. INSTALL DRIVE LINE W/ 90 BEND TO ENABLE DISCONNECTION AT DEMAND VALVE.

REVISIONS		TRASH AREA DRAIN DETAIL - # DD-400
Δ		
JOB NUMBER		PROJECT
DRAWN BY J. Taylor		TRASH AREA DRAIN DETAIL - MODEL # DD-600
CHECKED BY		DRAWING NO. P-TD-01
DATE 24-JUN-2004		SCHOOL
INDEX NO. 1 OF 1		



LOS ANGELES UNIFIED SCHOOL DISTRICT
BOARD OF EDUCATION

MAINTENANCE AND OPERATIONS
TECHNICAL SERVICES UNIT

355 SOUTH GRAND AVENUE, 4TH FLOOR
LOS ANGELES, CALIFORNIA 90071

Specifications for Demand Driven Washdown System

Furnish One (1) Fox Model DD 400 Demand Driven Washdown System consisting of the following items to be supplied by installing contractor:

1. Fox Model DD 400 Diversion Valve
2. Fox Model DD 400 Demand Valve
3. Fox Model DD 400 HDPE Diversion Pit
4. Fox Model DD 400 Silt Trap
5. Neenah # R 1878-AG5 Heavy Duty Frame and Grate
6. Watts Back Flow Preventer with Line Strainer
7. Fernco Couplings
8. O & M Manual

- A. Fox Patented Demand Valve shall be Brass or Gun Metal and shall be able to sense downstream water usage and send water thru the drive line to hydraulically open the pit installed diversion valve. The Demand Valve shall require only normal domestic water pressure to operate. Electric Valves will not be acceptable. The activation flow shall be no greater than one (1) liter per minute. This valve shall be in-line serviceable and in-line adjustable.
- B. Fox Patented Diversion Valve shall be Brass or Gun Metal with stainless steel and Nitrile inner workings. The Diversion Valve shall require only normal domestic water pressure to operate the upper cavity. The upper cavity shall require no more than 250 ml of water to inflate the upper cavity and open the diversion valve. The diversion valve shall have a self-flushing sealing edge to avoid obstruction when closing. When water usage ceases, the diversion valve shall automatically discharge the water used to inflate the diversion valve diaphragm.
- C. A Back Flow Preventer with line strainer must be installed upstream of the demand valve. The Back Flow Preventer will be supplied by Wastewater Diversion Systems, Inc. .
- D. Operation – The Fox Demand Driven Washdown System shall require nothing more than opening the water tap or operating washdown equipment to activate the diversion system. The Diversion Valve shall remain open as long as the water is being used sending all wash water to the proper treatment facilities. When water usage ceases, the Diversion Valve shall close, sealing the treatment or waste entrance preventing rain water from entering

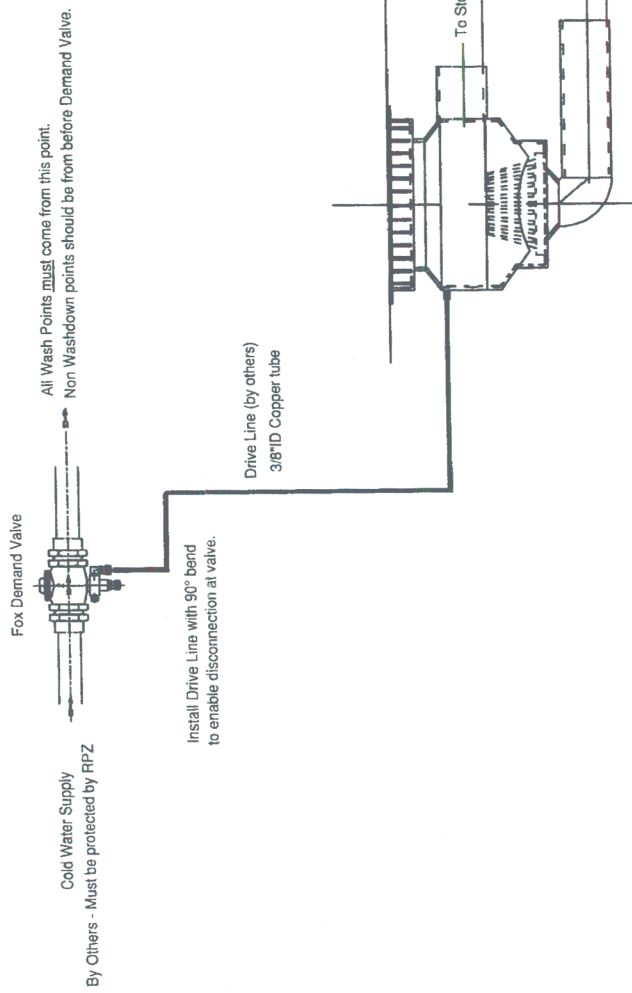
Specifications for Demand Driven Washdown System

Page 2.

the treatment facility. Manual, Electric or Valves requiring operator will not be acceptable.

- E. Only systems that have been inspected, tested and approved by the City of LA Building and Safety Mechanical Testing Laboratory for use in the City of Los Angeles will be accepted for use on this project.

The Demand Driven Washdown shall be as manufactured by Fox Environmental Systems and distributed by Wastewater Diversion Systems, Inc. of Mechanicsville, VA 23111. Phone: 804-730-1280; Fax: 804-730-3489 E-Mail: FoxWWDSUSA@aol.com .

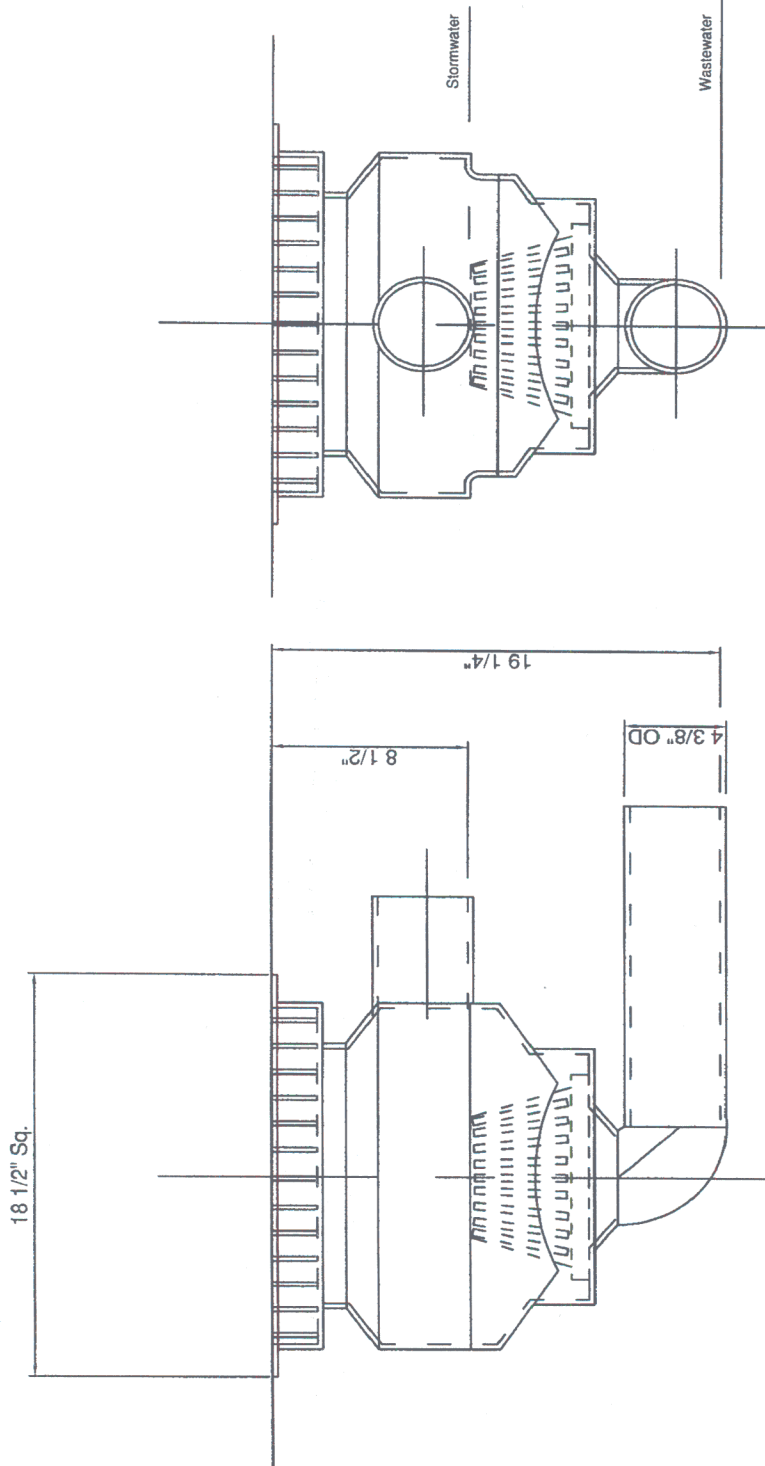


The Drawing and design is the Property of Environmental Systems Pty Ltd. It must not be used for any other purpose than that for which it was issued. The drawing must be used in accordance with the drawing issued for the permission of the Fox Environmental Systems Pty Ltd.

Drawn	M.J.S.
Date	09-09-03
Scale	NTS
Drawing No	DD400-02

Fox Environmental Systems Pty. Ltd.
 4 Lyne Street, Chelmsford
 Queensland 4560, Australia
 Phone (07) 5482 5720
 Fax (07) 5482 5730
 e-mail info@esecore.com.au

Details of the Fox DD400 Diversion System



Fox Environmental Systems Pty. Ltd. 4 Lyndhurst Road Glenvale NSW 1511 Phone (02) 5482 5722 Fax (02) 5482 5723 e mail info@foxenviro.com.au	This Drawing and design is the Property of Fox Environmental Systems Pty Ltd. It must not be used for any other purpose than that for which it was issued. The drawing must not be shown or lent to any other person without the written consent of the Fox Environmental Systems Pty Ltd.	
	Drawn Date Scale Drawing No	M.J.S. 09 - 09 - 03 NTS DD400-01
Details of the Fox DD400 Diversion System		