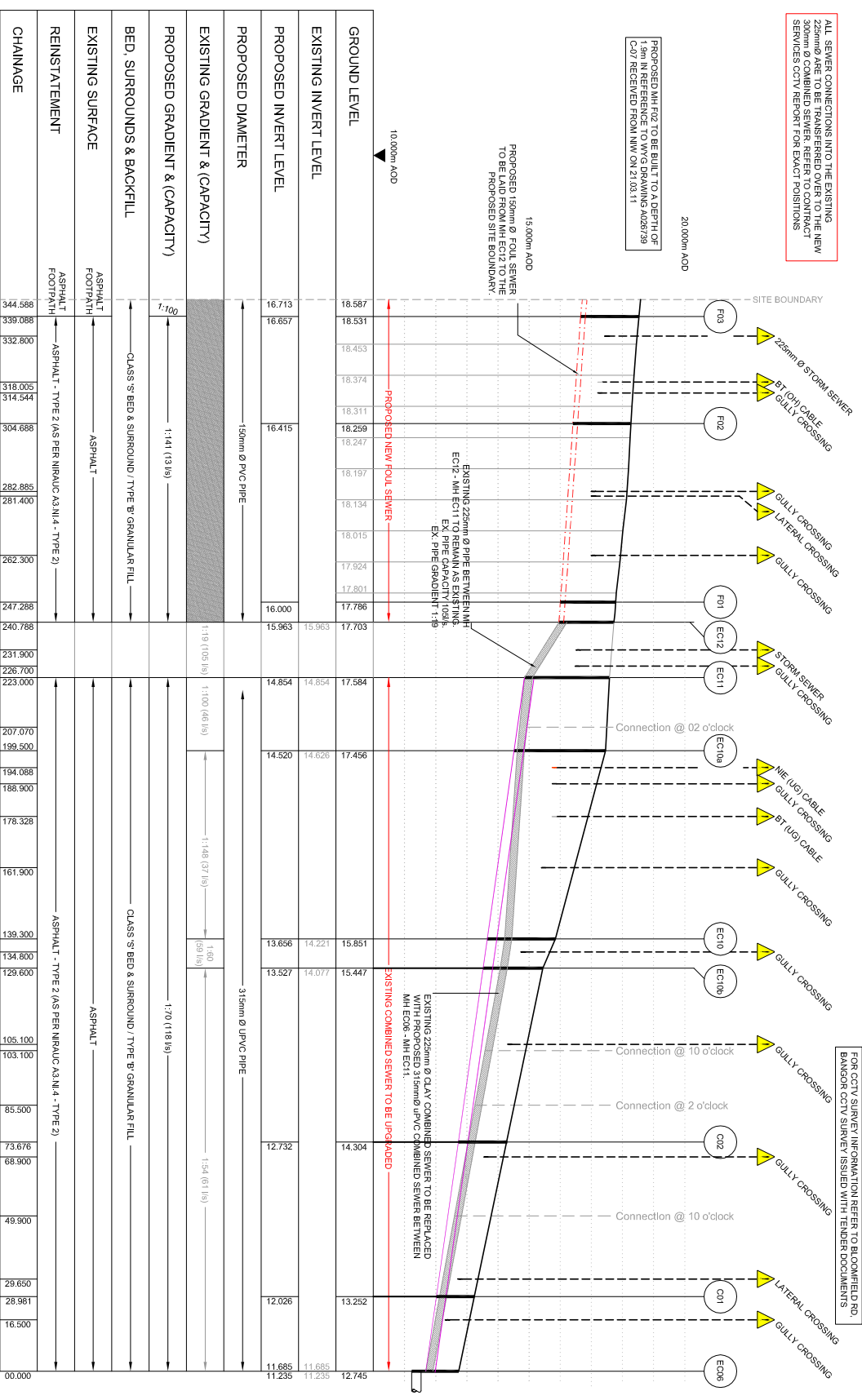


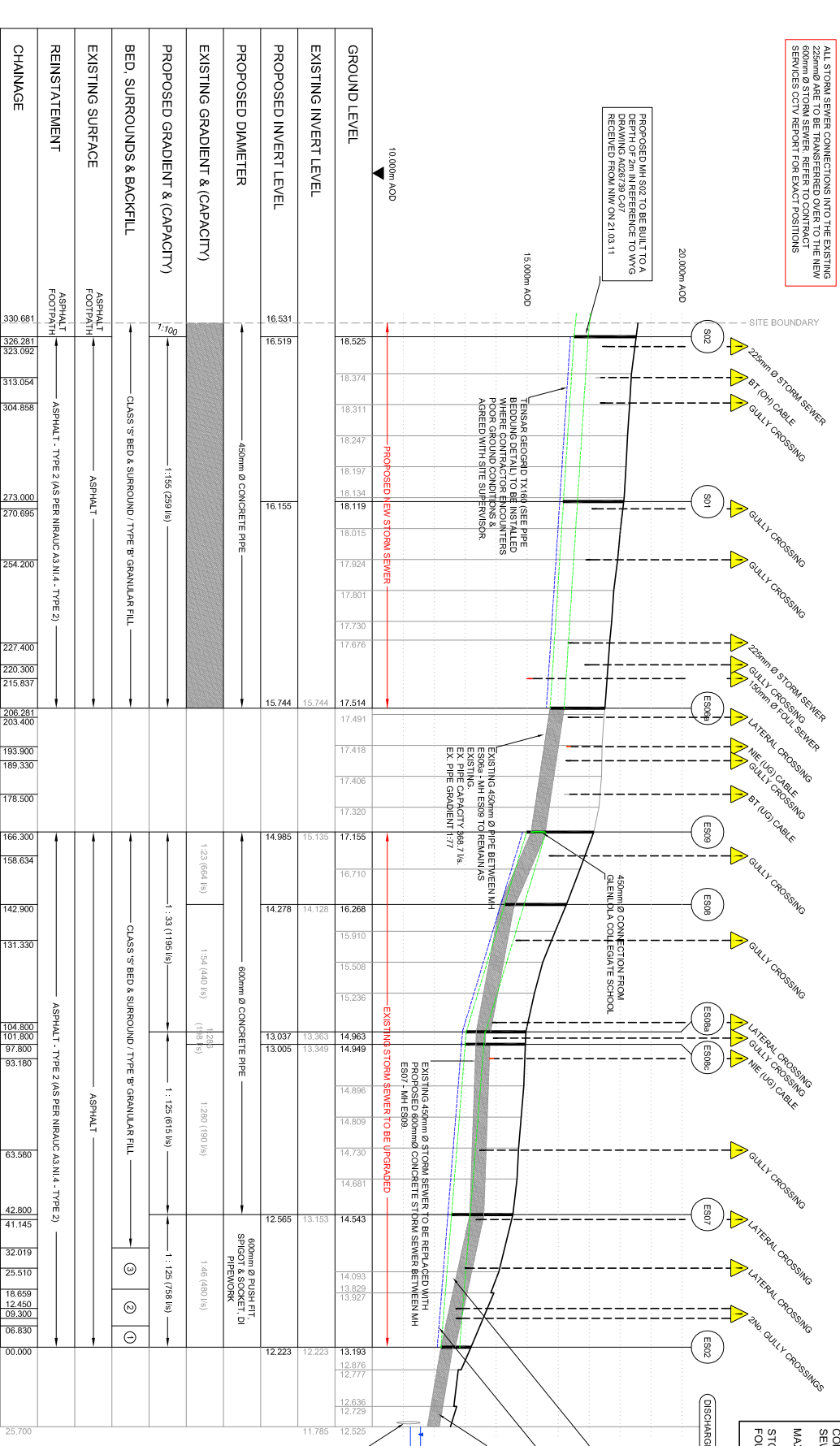
ALL SEWER CONNECTIONS INTO THE EXISTING 225mm Ø STORM SEWER REFER TO CONTRACT SERVICES ONLY REPORT FOR EXACT POSITIONS

PROPOSED MH E20 TO BE BUILT TO A DEPTH OF 1.5m IN REFERENCE TO WVG DRAWING A0267/29 (C-2) RECEIVED FROM NIM ON 21.03.11



FOR CCTV SURVEY INFORMATION REFER TO BLOOMFIELD RD, BANGOR CCTV SURVEY ISSUED WITH TENDER DOCUMENTS

ALL STORM SEWER CONNECTIONS INTO THE EXISTING 225mm Ø STORM SEWER REFER TO CONTRACT SERVICES ONLY REPORT FOR EXACT POSITIONS



MANHOLE CONSTRUCTION DETAIL

WHERE POSSIBLE MANHOLES WITH GREATER DEPTHS SHOULD BE FITTED WITH GUARD BARS, SAFETY CHAINS OR OTHER SAFETY DEVICES. ANY MANHOLES GREATER THAN 3.5m DEEP TO TOP OF BRICKING TO HAVE A LADDER INSTALLED INSTEAD OF STEPIRONS.

MAXIMUM PEAK DESIGN FLOW FROM BANGOR SWIMMING POOL:  
STORM SEWER = 224 L/S;  
FOUL SEWER = 193 L/S  
CONFIRM BY NIM, EMAIL DATED 11/04/11.  
SEWER REQUISITION ATTACHED.  
MAXIMUM CAPACITY OF NEW SEWERS:  
STORM SEWER EXT. = 659 L/S @ GRAD 1:155;  
FOUL SEWER EXT. = 13 L/S @ GRAD 1:141

**ROCKER PIPE LENGTH REQUIREMENTS.**

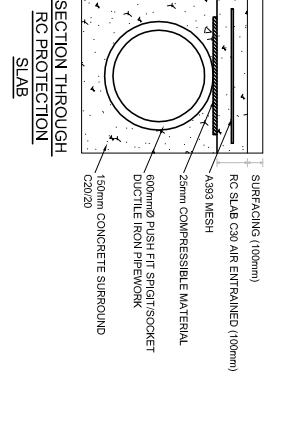
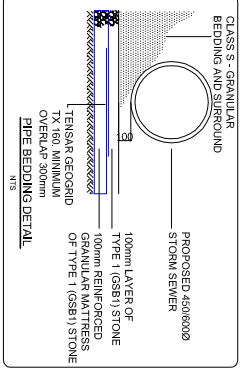
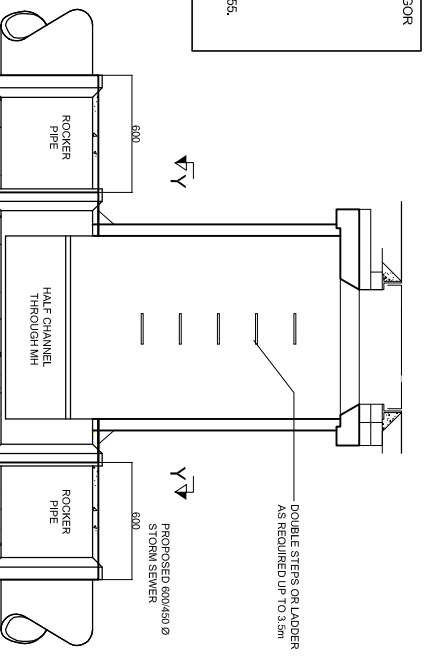
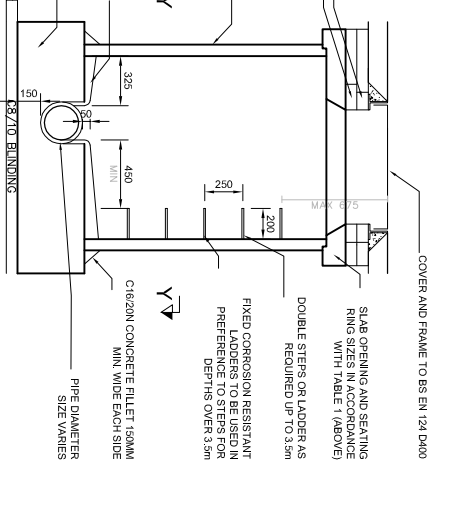
THE LENGTH OF THE NEXT PIPE (ROCKER PIPE) AWAY FROM THE STRUCTURE SHALL BE AS SHOWN IN THE TABLE BELOW:

NOMINAL DIAMETER (mm)	EFFECTIVE LENGTH (m)
150 - 600	0.6
675 - 750	1.0
825 AND OVER	1.25

**TABLE 1 (MANHOLE SIZES AND OPENINGS) BS EN 752-3:1997**

DIAM. OF PIPE IN MANHOLE	DIAM. OF MANHOLE (mm)	MIN. CLEAR OPENING SIZE
Up to 300mm	1200mm ring	675 x 675
375mm to 700mm	1500mm ring	675 x 675
750mm to 900mm	1800mm ring	675 x 675

PLEASE NOTE: WHERE SPECIFIED BY THE DESIGNER A LARGER RING SHOULD BE USED WHEN MULTIPLE PIPEWORK IS ENTERING A MANHOLE OR WHEN THE PIPELINE HAS A WITHIN THE MANHOLE. IN SUCH CASES AN INSUFFICIENT SPACE BETWEEN THE DEPTH OF A MANHOLE IS LESS THAN 1.5m FROM COVER LEVEL TO THE SOFFIT OF THE PIPE A 1200mm X 675mm OPENING SHOULD BE ALLOWED FOR.



- ① REINFORCED CONCRETE SLAB @ 0 - 600mm COVER;
- ② CONCRETE SURROUND & BACKFILL (600 - 900mm COVER)
- ③ CONCRETE SURROUND (900 - 1200mm COVER)

STORM SEWER LONG SECTION, BLOOMFIELD ROAD, BANGOR

HORIZONTAL SCALE: 1:500 VERTICAL SCALE: 1:100