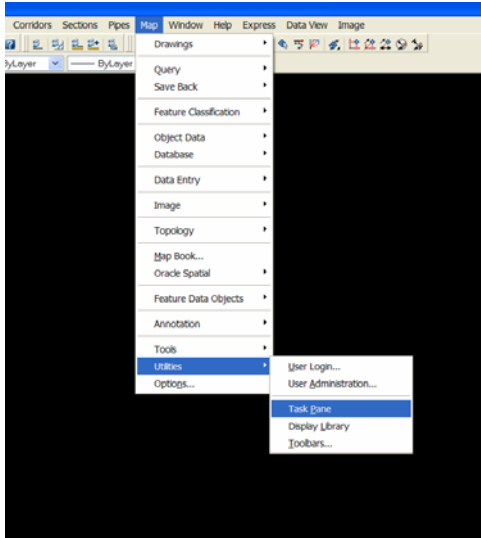


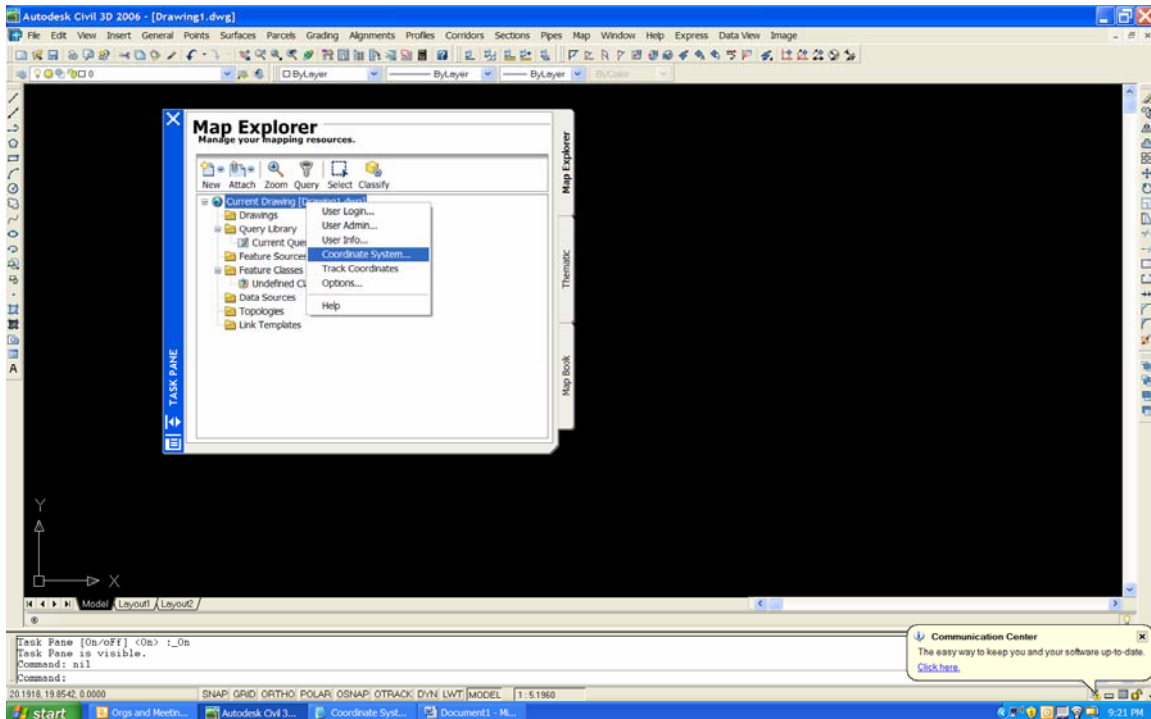
BASE MAP BASICS

SETTING COORDINATE SYSTEM

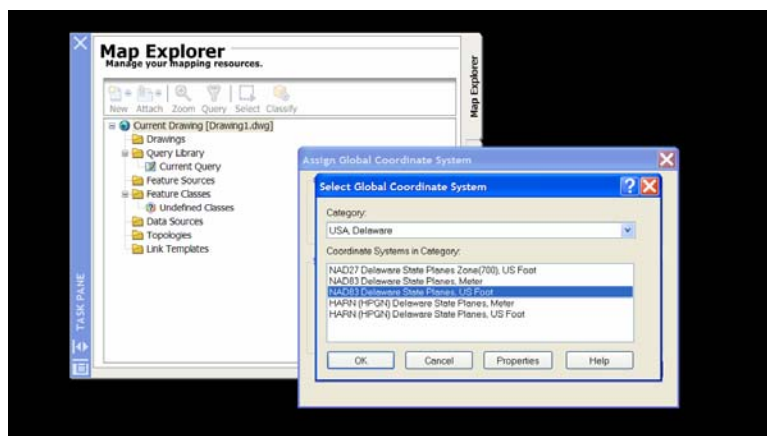
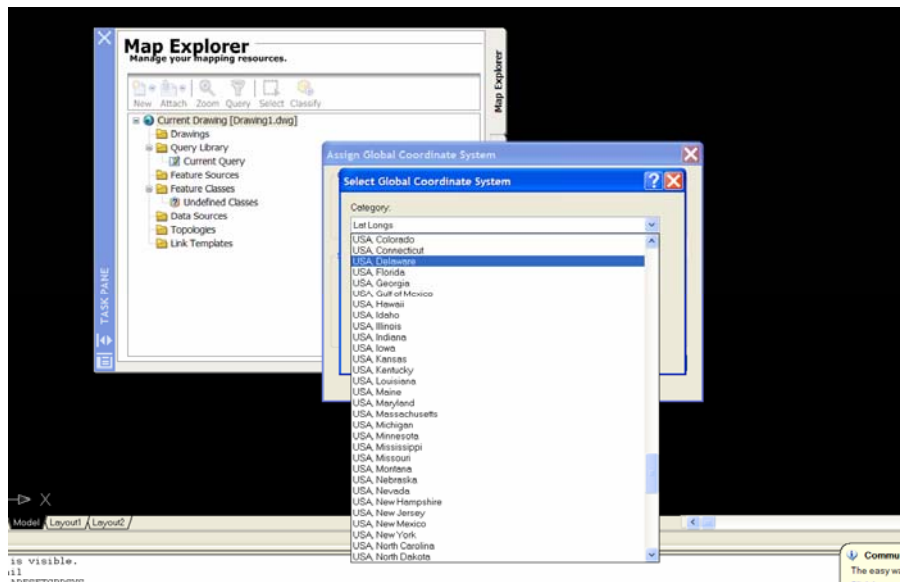
Bring in Task Pane



Right Click on "Current Drawing", Choose Coordinate System

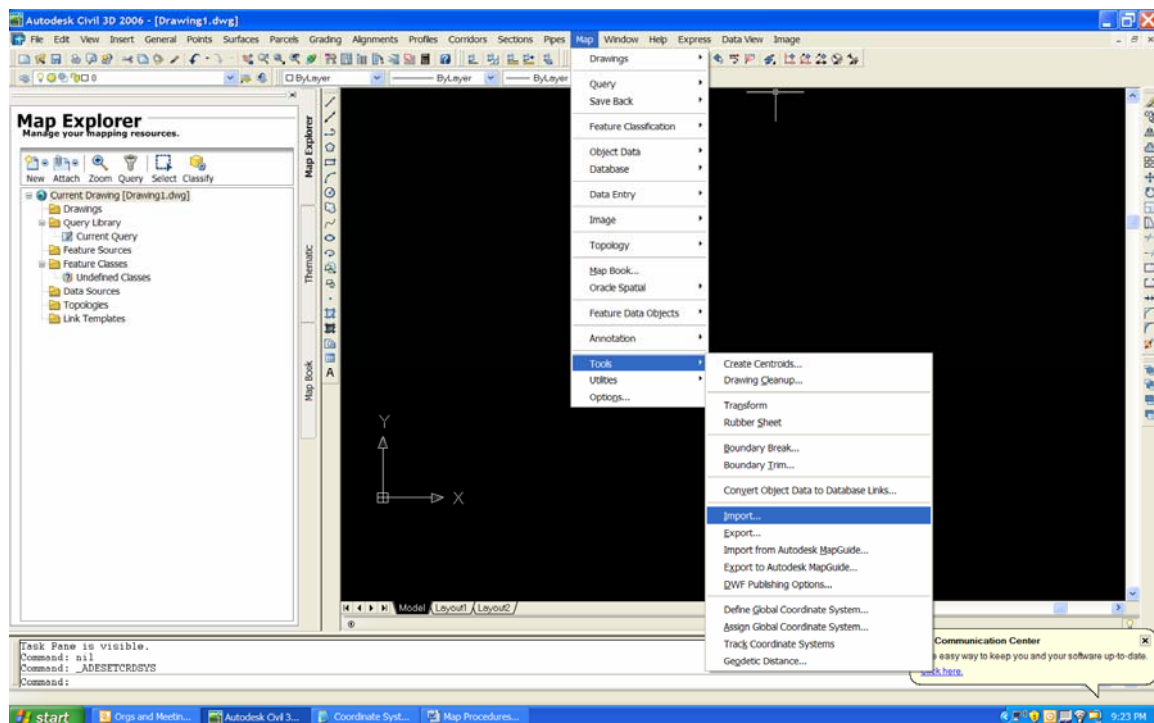


Choose the coordinate system that you would like to use for this drawing.

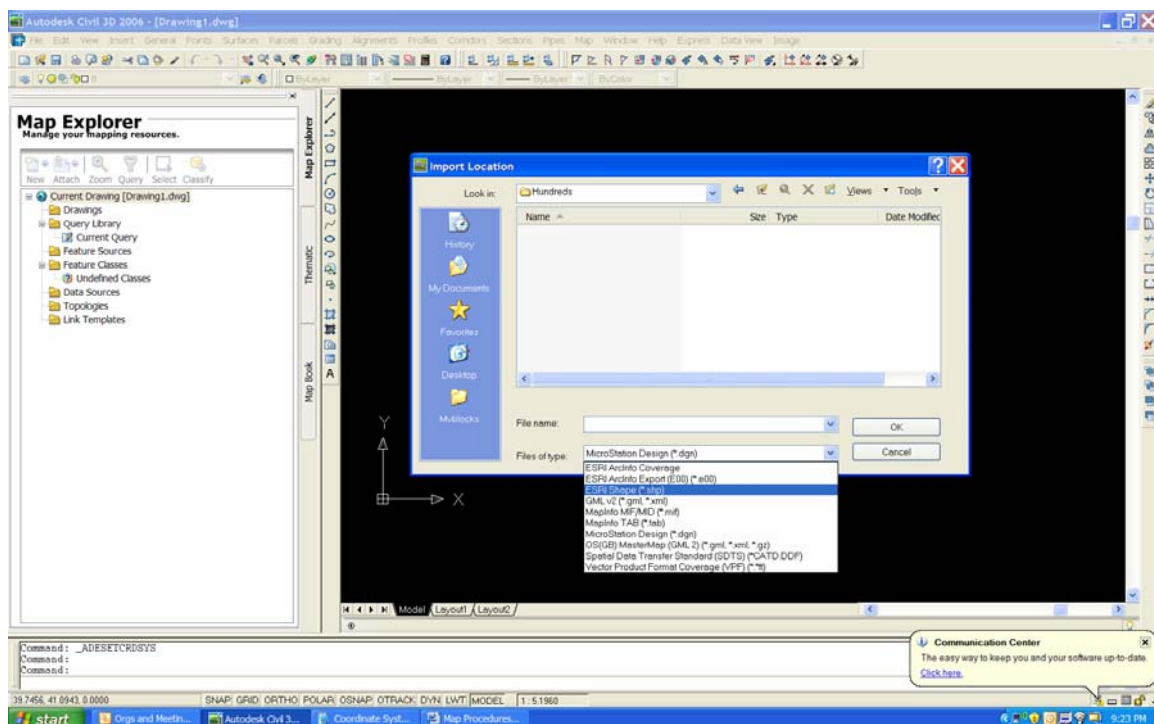


IMPORT GIS DATA

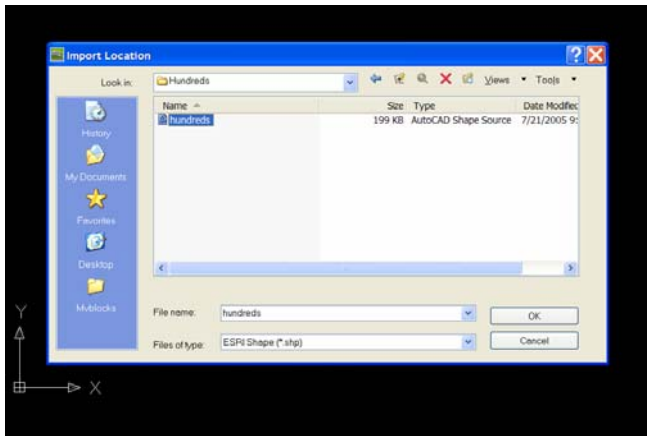
Under the Map Menu, Choose Tools>Import



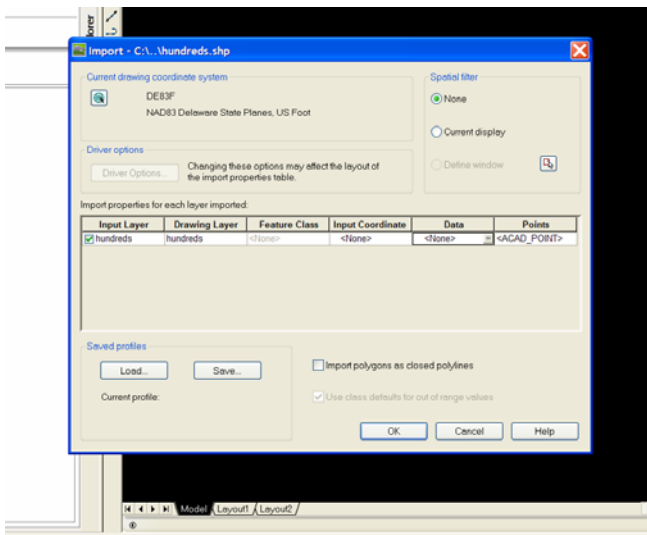
There are many types of data you can import, most commonly ESRI shape or ArcInfo Coverage



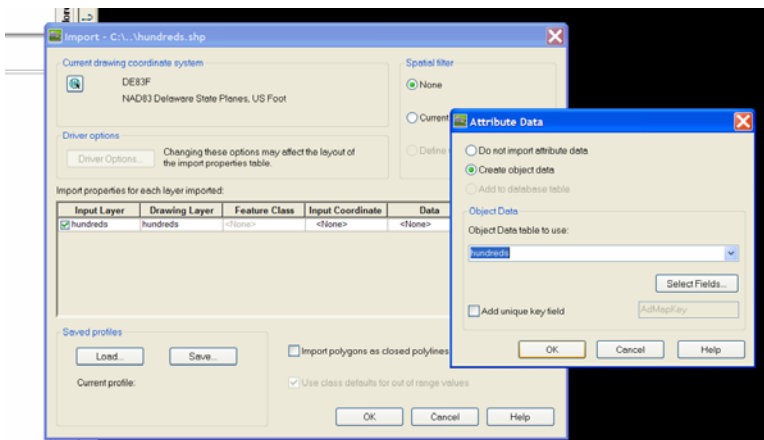
Navigate to your Files



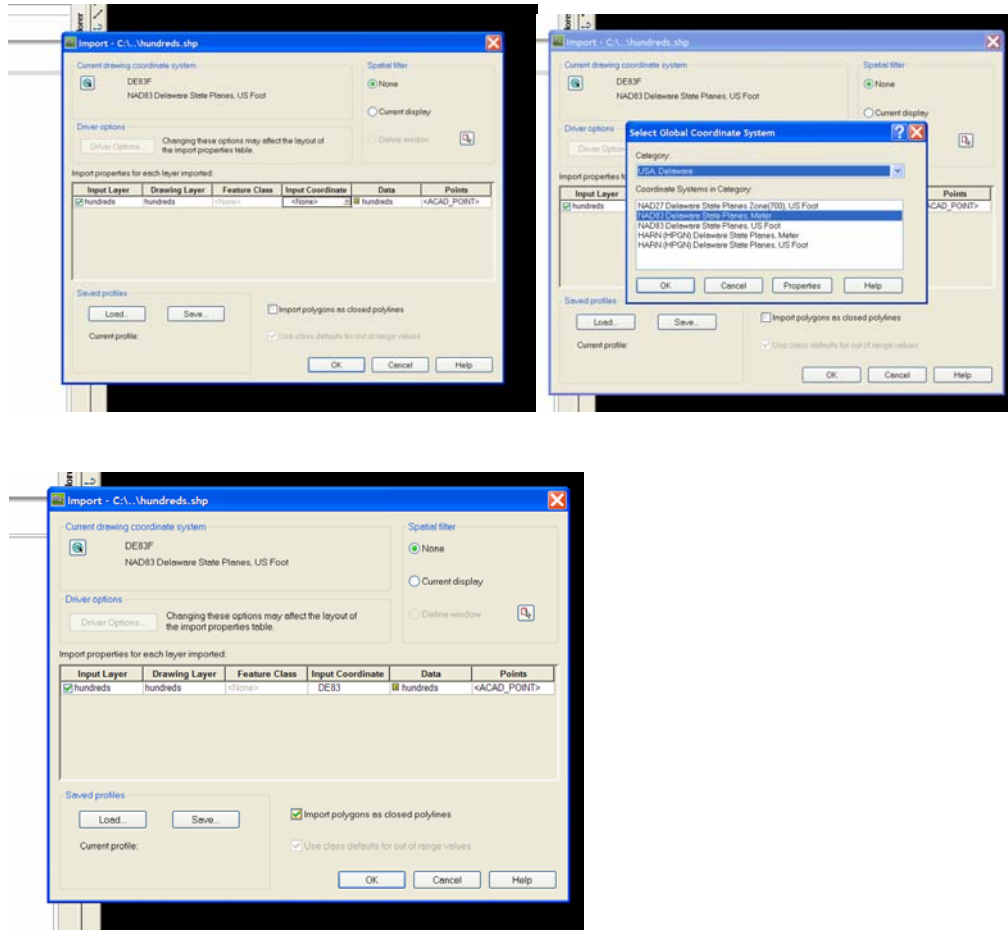
This interface allows you customize what you are importing.



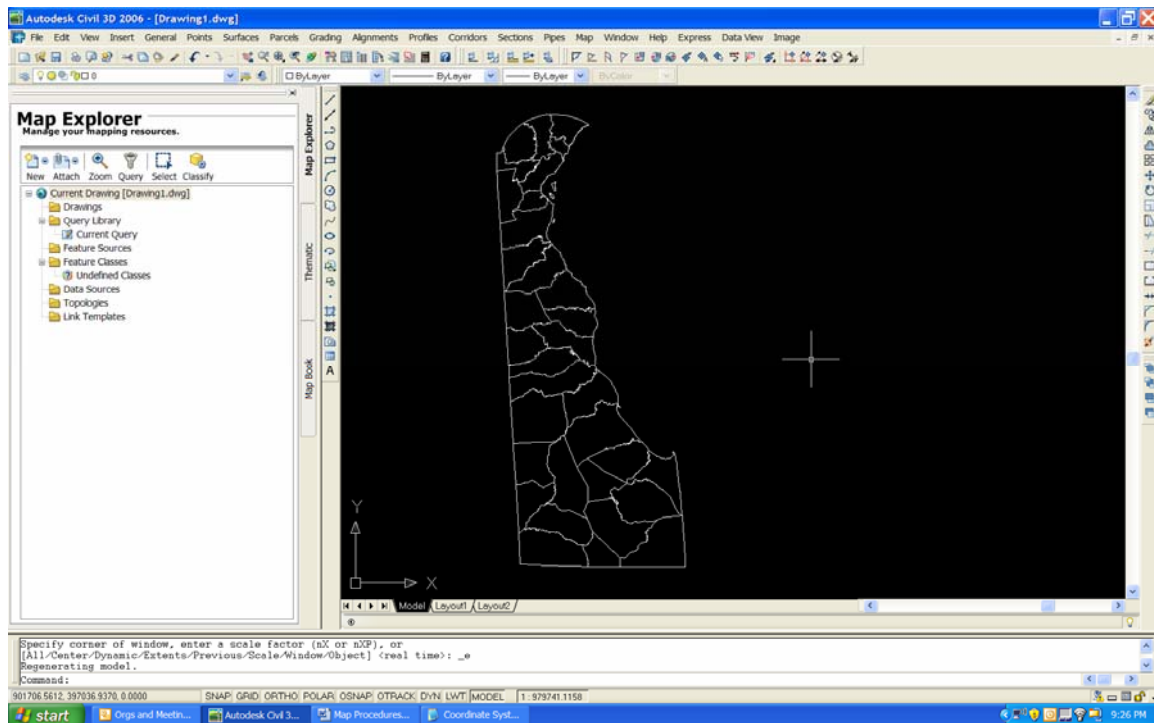
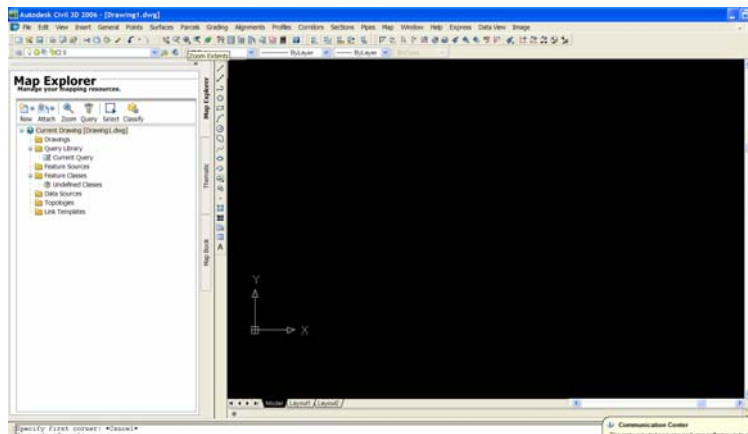
Object Data: The information that is attached to each entity can be imported along with the file.



Coordinate System Transformation: If the file you are importing has a different coordinate system than your current drawing, choose it here for transformation upon import.



Once you have imported the file, you may have to zoom extents to see the entities.



Since we brought the data in along with the geometry, you can use AutoCAD properties to view the data table.

