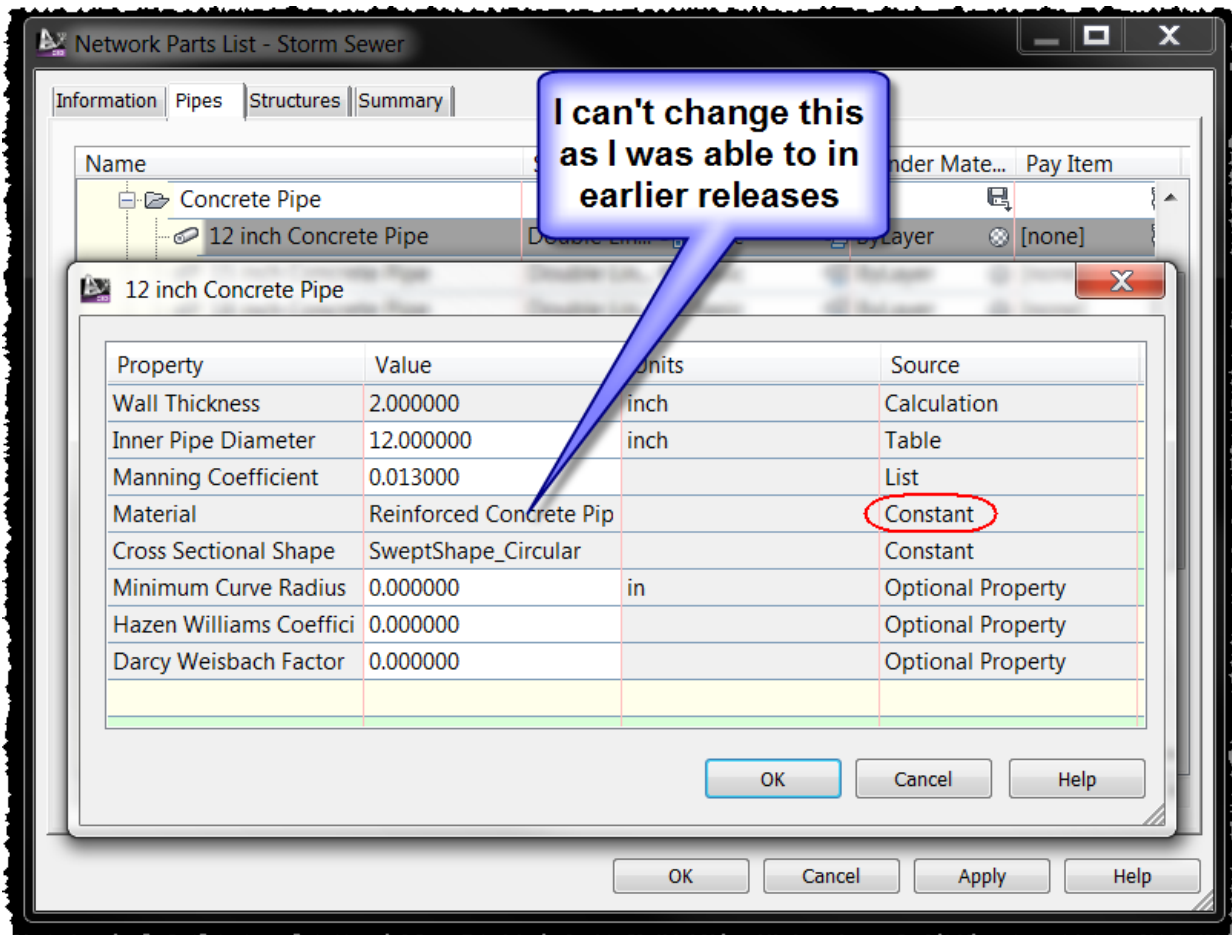
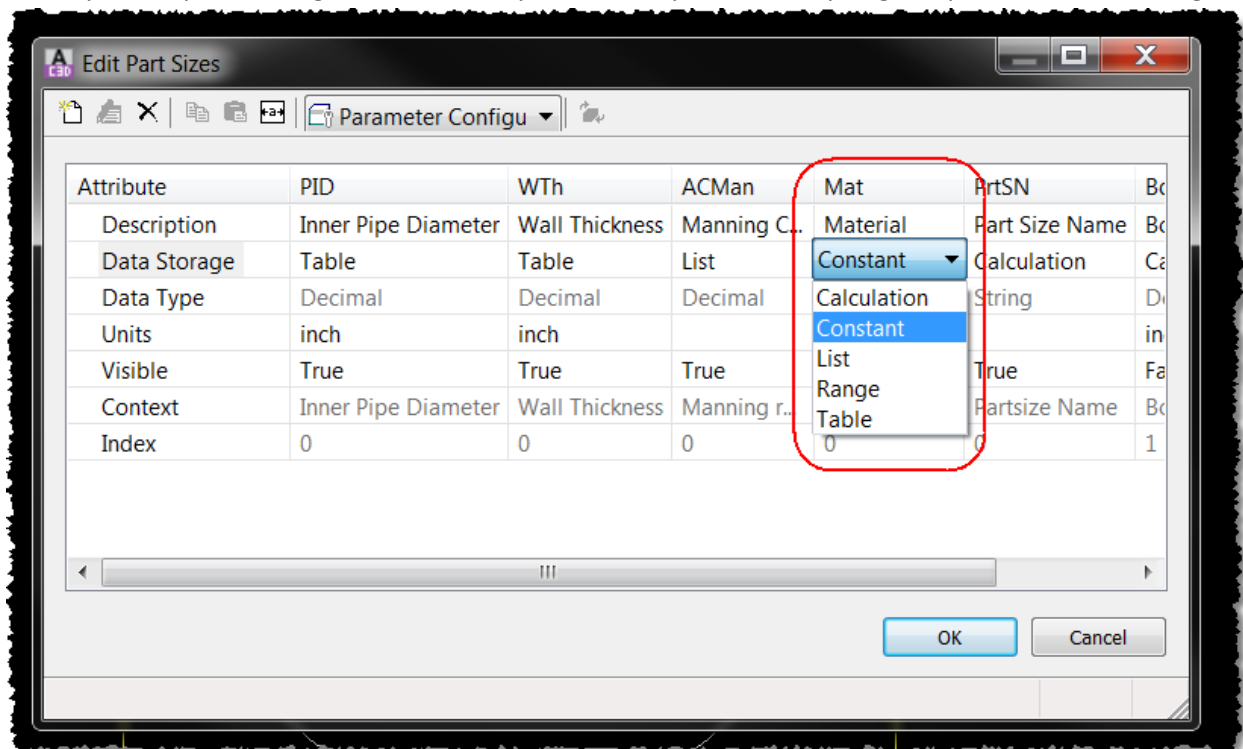


In previous versions I was able to manually edit the material:



In the part builder I see that the material column is set to constant. I've tried changing this to something else but have not had any luck. AND DO NOT CHANGE THIS TO TABLE. . .it crashed my software and I had to pull the part catalog off of another system and replace it on my to get my software to work again:



Whatever it is that's locking it in the part builder is also locking it in the pipe properties (I suppose):

