

Please Quote:

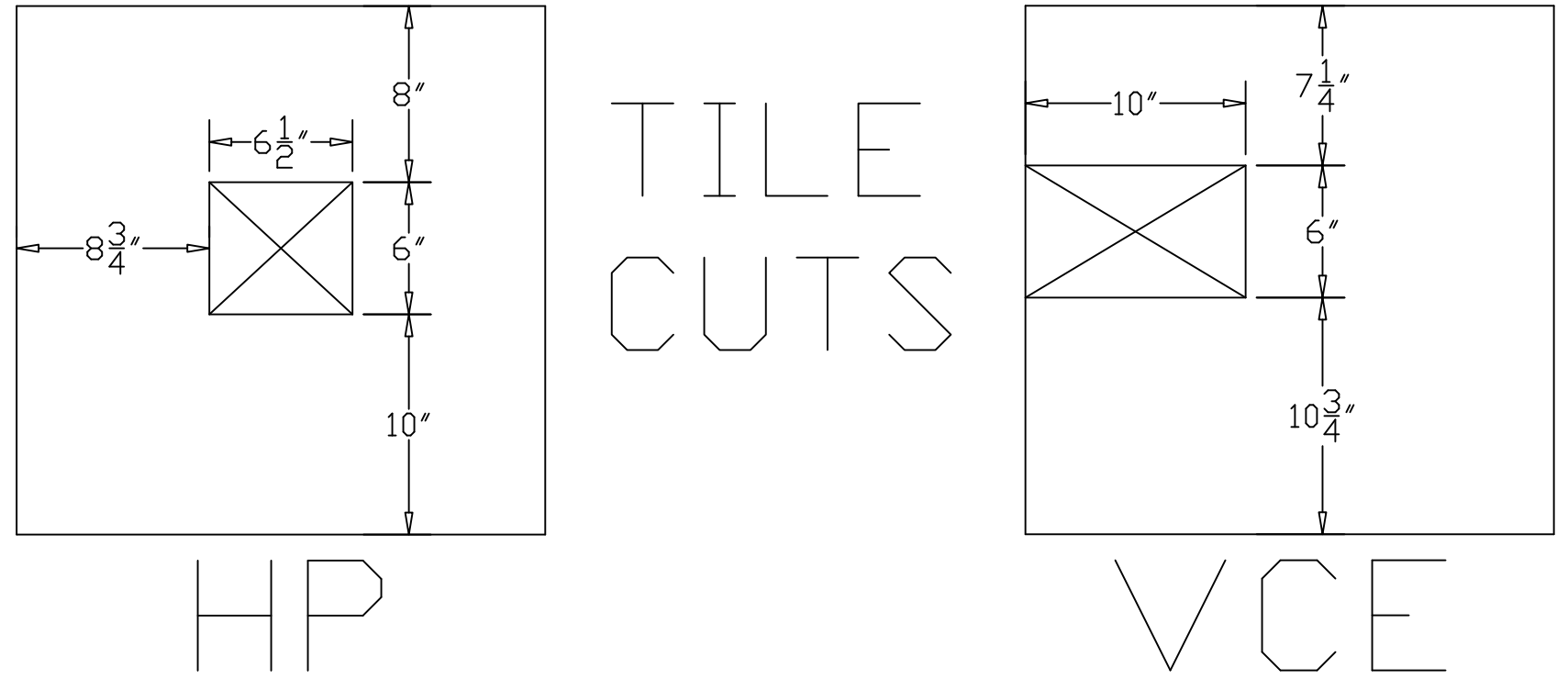
Provide flexible conduits from diverse PDU sources to new Racks S1.25 and S1.26 per the drawing and table.

Questions?  
John Dennis

Equip. No.	DESCRIPTION	MFR.	CONNECTOR TYPE	Volts	Phase	UPS	PDU	1st Pos	2nd Pos	3rd Pos
S1.25	HP Pizza Box Server Rack, Line Cord A	HP	L6-30R	208	1	1				
	HP Pizza Box Server Rack, Line Cord B		L6-30R	208	1	2				
S1.26	Panduit Rack, Line Cord A	VCE	460C9W	208	3	1				
	Panduit Rack, Line Cord B		460C9W	208	3	2				

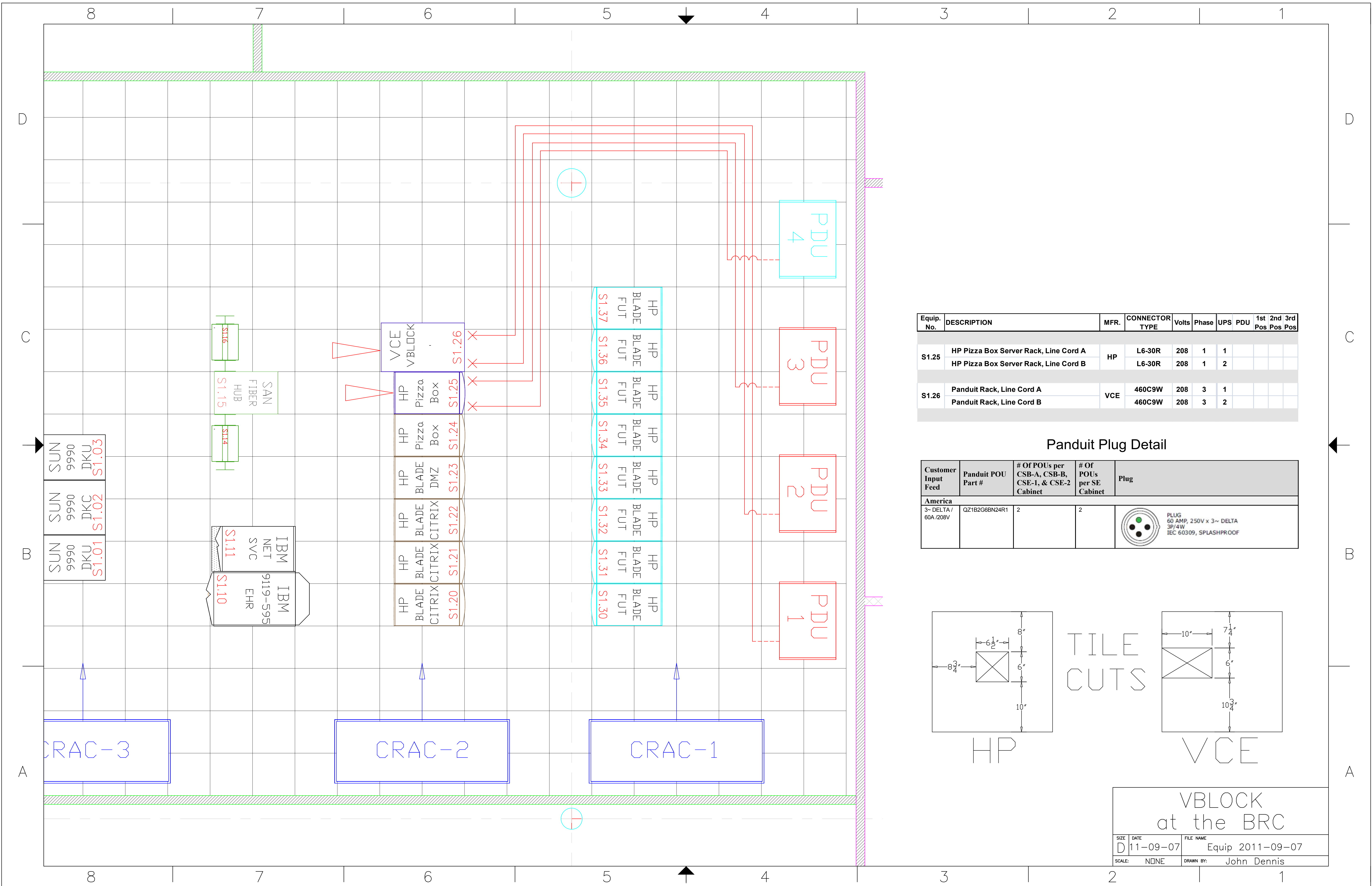
Panduit Plug Detail

Customer Input Feed	Panduit POU Part #	# Of POU's per CSB-A, CSB-B, CSE-1, & CSE-2 Cabinet	# Of POU's per SE Cabinet	Plug
America 3~ DELTA / 60A/208V	QZ1B2G6BN24R1	2	2	



VBLOCK at the BRC

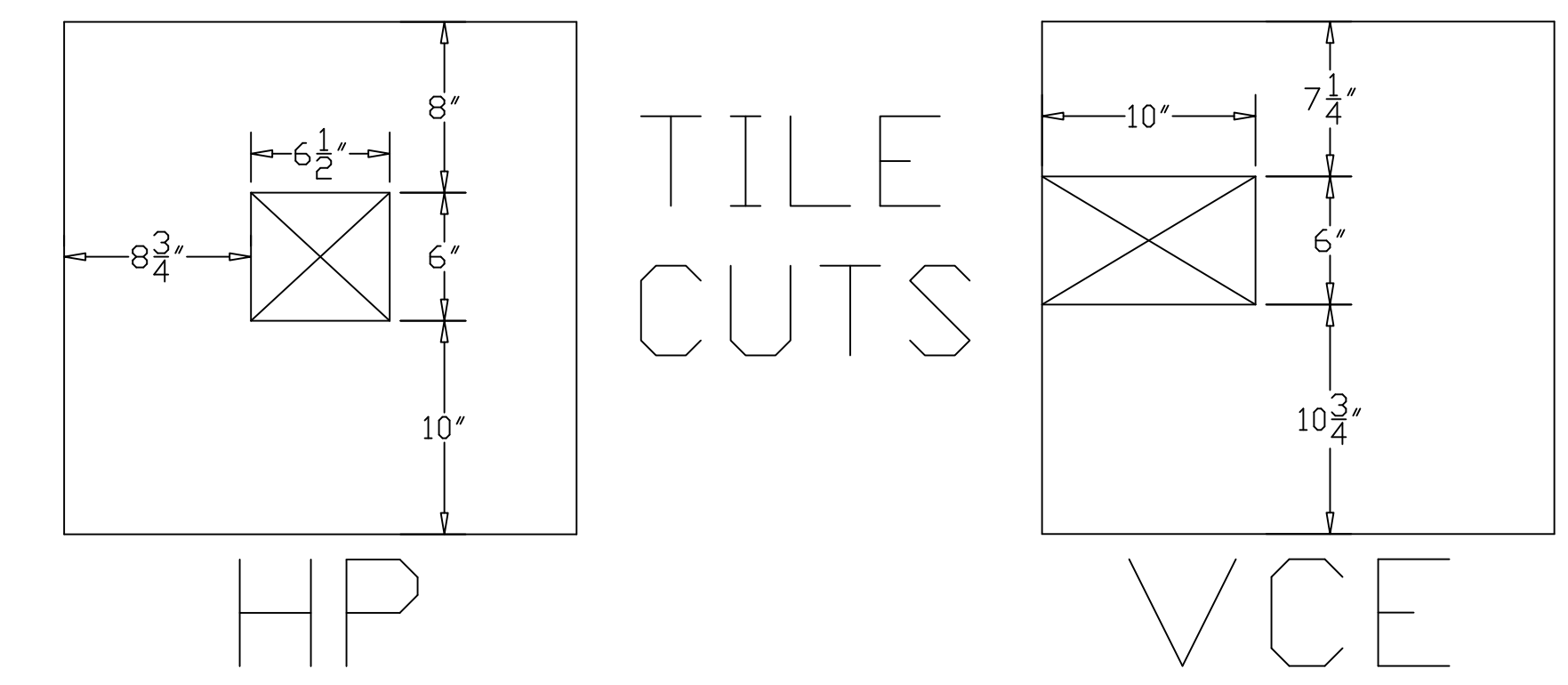
SIZE	DATE	FILE NAME
D	11-09-07	Equip 2011-09-07
SCALE: NONE	DRAWN BY: John Dennis	



Equip. No.	DESCRIPTION	MFR.	CONNECTOR TYPE	Volts	Phase	UPS	PDU	1st Pos	2nd Pos	3rd Pos
S1.25	HP Pizza Box Server Rack, Line Cord A	HP	L6-30R	208	1	1				
	HP Pizza Box Server Rack, Line Cord B		L6-30R	208	1	2				
S1.26	Panduit Rack, Line Cord A	VCE	460C9W	208	3	1				
	Panduit Rack, Line Cord B		460C9W	208	3	2				

**Panduit Plug Detail**

Customer Input Feed	Panduit POU Part #	# Of POU's per CSB-A, CSB-B, CSE-1, & CSE-2 Cabinet	# Of POU's per SE Cabinet	Plug
America				
3- DELTA / 60A/208V	QZ1B2G6BN24R1	2	2	



**VBLOCK at the BRC**

SIZE	DATE	FILE NAME
D	11-09-07	Equip 2011-09-07
SCALE:	NONE	DRAWN BY: John Dennis