

What's New

Autodesk® Buzzsaw® 2011

April 2010

Introducing Buzzsaw Sync

Autodesk Buzzsaw 2011 now includes the Buzzsaw Sync feature. This new functionality simplifies how users exchange models and files with Autodesk Buzzsaw. With Buzzsaw Sync, users can synchronize from a local system to the Buzzsaw cloud, upload models and files without interrupting their workflows, and leverage Buzzsaw permissions to securely synchronize, exchange and access information.

Buzzsaw Sync: Automatically synchronize files from the desktop to the Buzzsaw cloud without interrupting users' workflow .

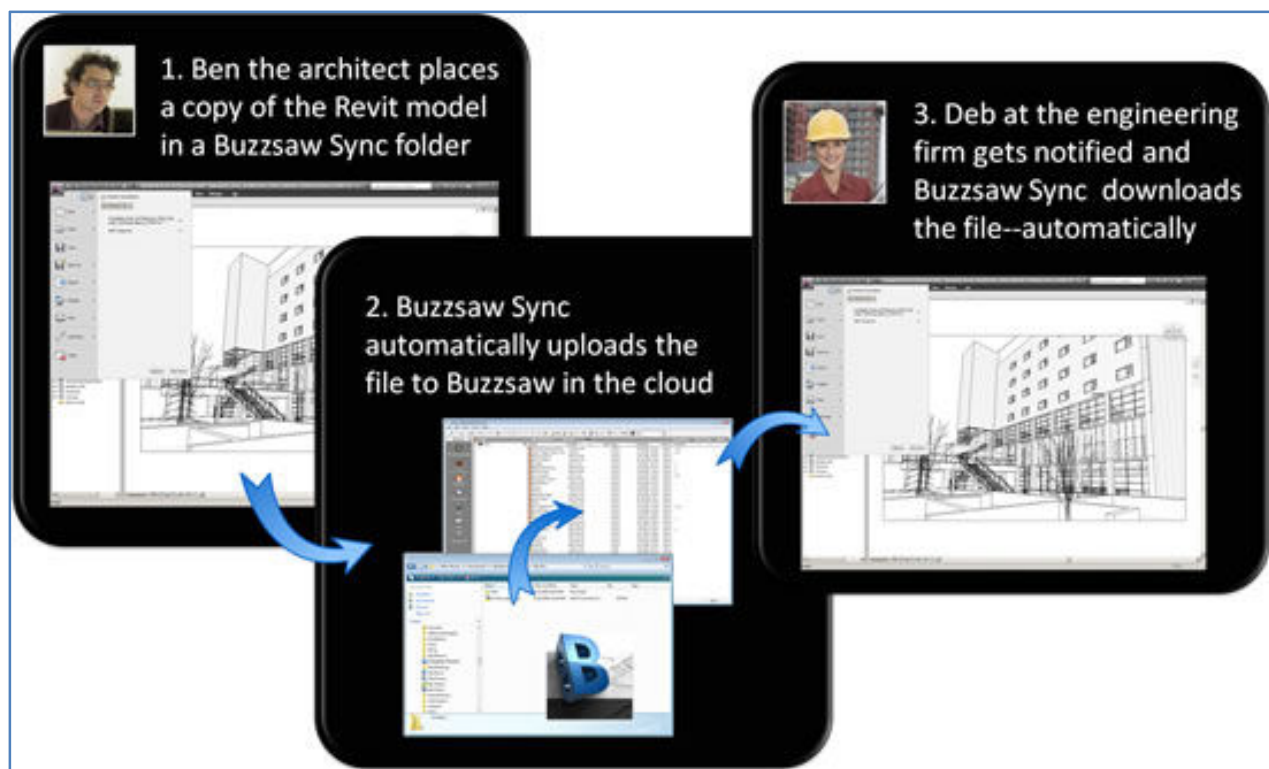


Figure 1: Buzzsaw Sync Design Workflow

After setting up a Sync folder in three easy steps, any Revit®, AutoCAD Civil 3D®, or AutoCAD® user can simply place a copy of the design in the Buzzsaw Sync folder and it will automatically upload to Buzzsaw in the background.

Any other user who sets up a Sync to the same Buzzsaw folder, the new file will automatically download in the background.

Buzzsaw Sync: Easily centralize multi-discipline models for importing into Autodesk Navisworks

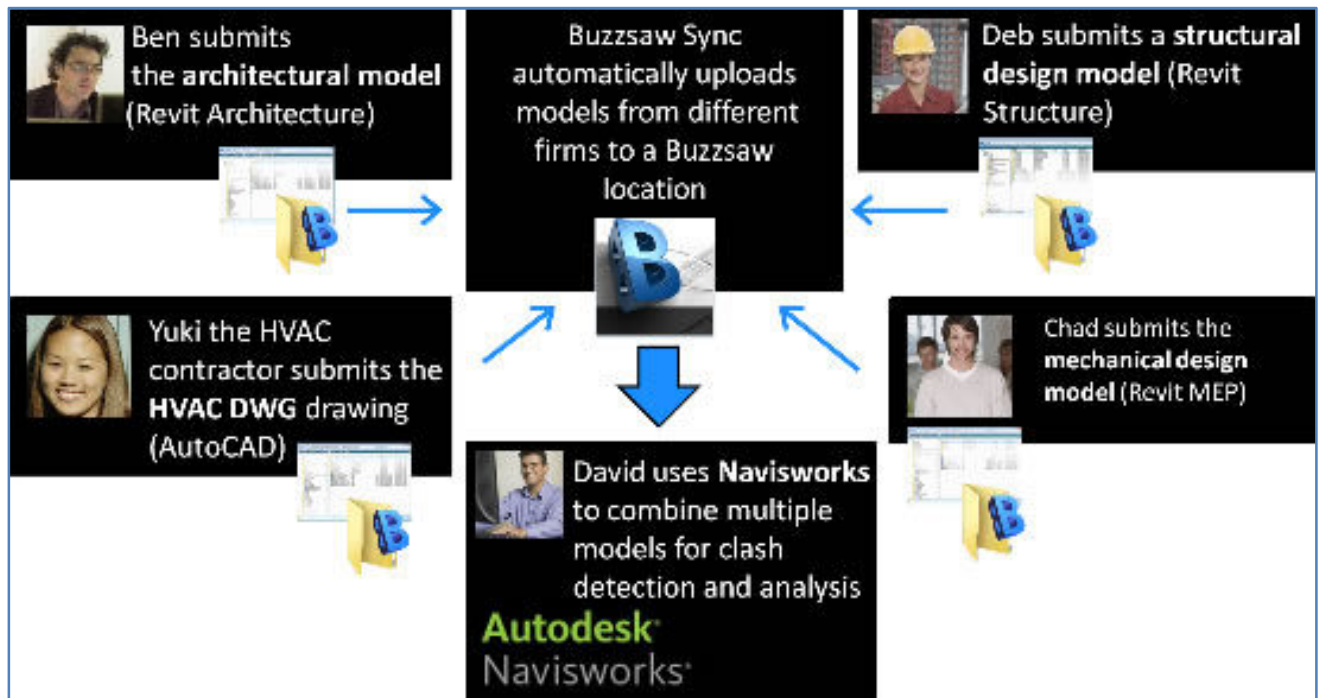


Figure 2: Buzzsaw Sync Navisworks Coordination Workflow

Buzzsaw Sync makes sharing models and files seamless and transparent in BIM workflows that require multiple stakeholders from different companies to collaborate on design processes.

Distributed teams with separate models for each discipline need to combine and coordinate these models for workflows like clash detection, simulation and analysis, and design reviews. With Buzzsaw Sync, these users can Sync their models to a central location in Buzzsaw. When it is time to bring the models into Autodesk Navisworks for analysis and review, the most current models are all in one place.

Buzzsaw Sync: Leverage Buzzsaw permissions to securely synchronize, share and access information

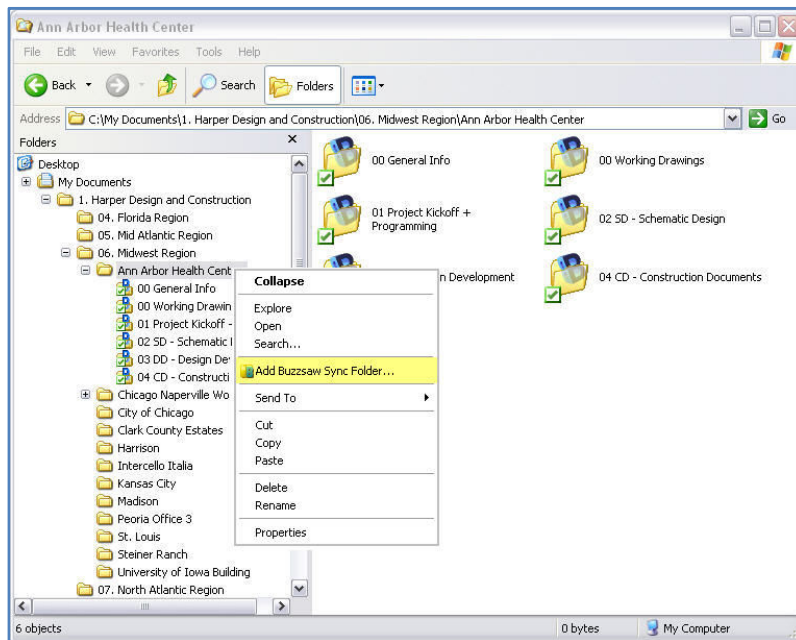


Figure 3: Setting Up a Buzzsaw Sync Folder

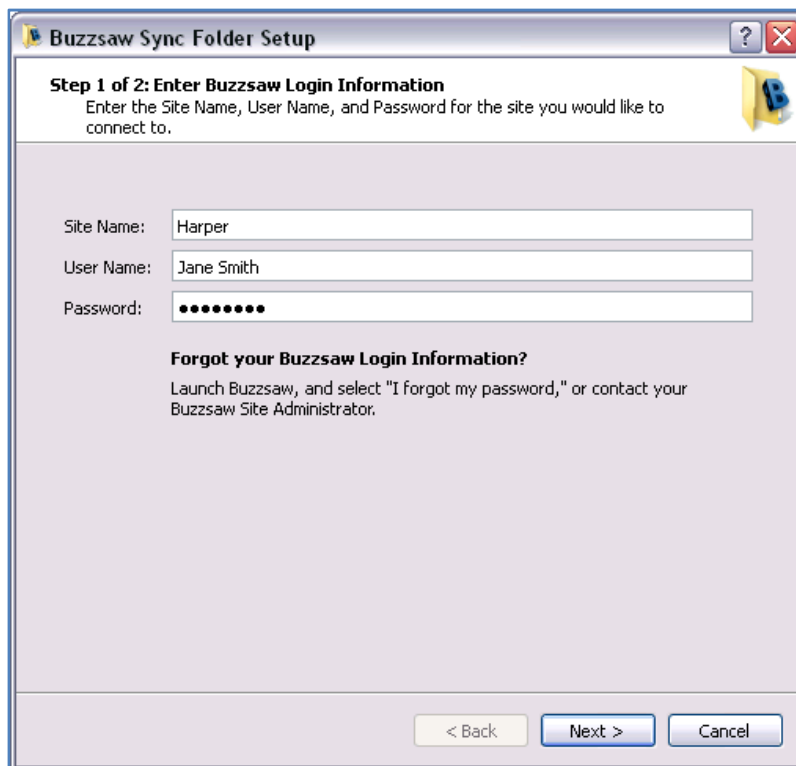


Figure 4: Setting Up a Buzzsaw Sync Folder: Entering Username and Password

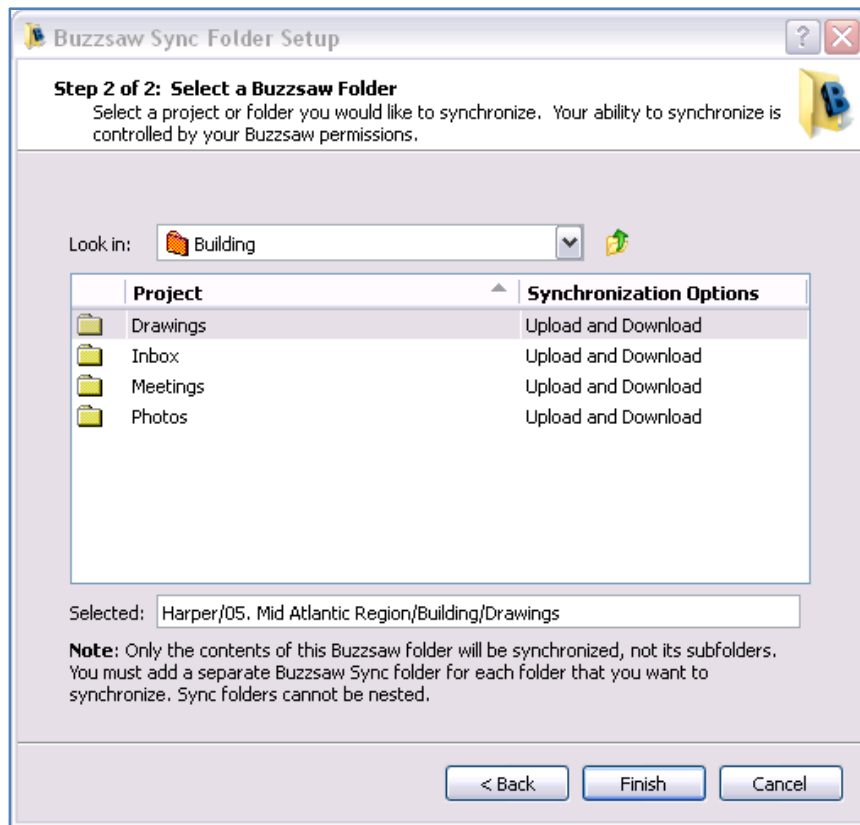


Figure 5: Selecting a Folder on Buzzsaw for Synchronization

Buzzsaw Sync leverages all the permissions and access controls in Buzzsaw. Each Sync is subject to all the security restrictions that the user would be subject to when uploading and downloading (users with “Edit” or “Administrator” permissions on a Buzzsaw folder may set up a Sync folder locally. Any time a file is updated, either in the local Sync folder or in the Buzzsaw cloud, Buzzsaw Sync ensures that both files are “in Sync” with the most recent version.

With Buzzsaw Sync, project teams no longer have to log into Buzzsaw separately to ensure they have the most recent version of every file.

Also Available in Buzzsaw 2011:

The new member setup pages and the default “Site Information Page” and “Project Information Page” have been updated with the new Buzzsaw 2011 images and Autodesk brand.

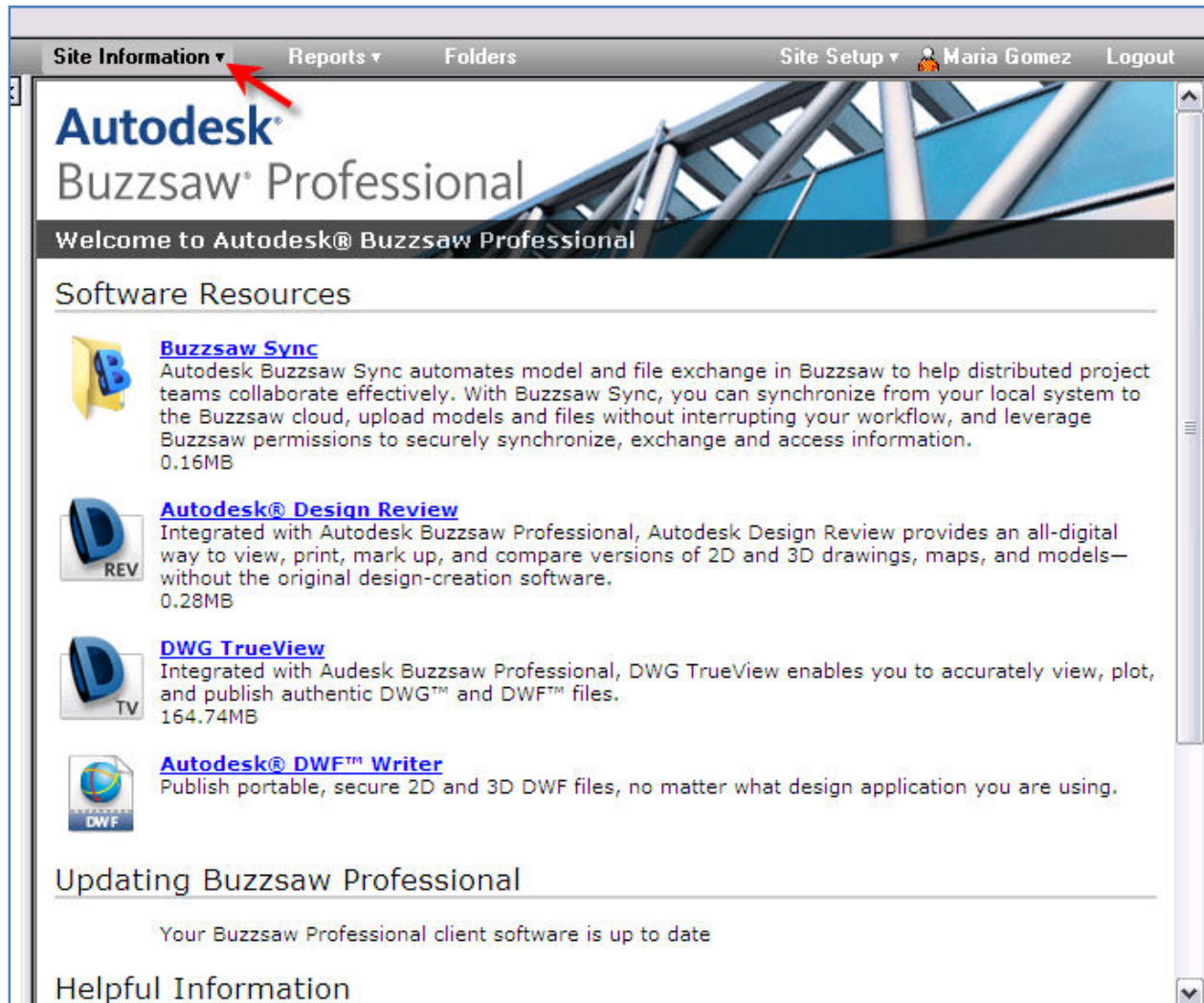


Figure 6: Updated Site Information Page